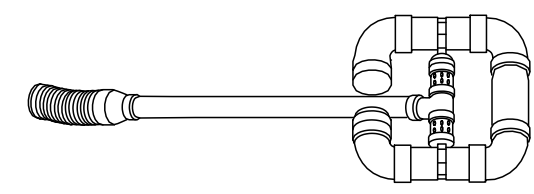


Sk

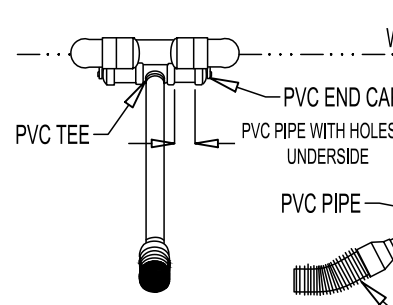
GSNCC 2016 Edition

NOTE:
SKIMMER CONFIGURATION SHOWN IS
TYPICAL. THE DESIGNER/ENGINEER MAY
SUBMIT AN ALTERNATE SKIMMER DETAIL
FOR REVIEW.

SKIMMER PERSPECTIVE



SKIMMER FRONTAL SECTION VIEW



SKIMMER SIDE SECTION VIEW

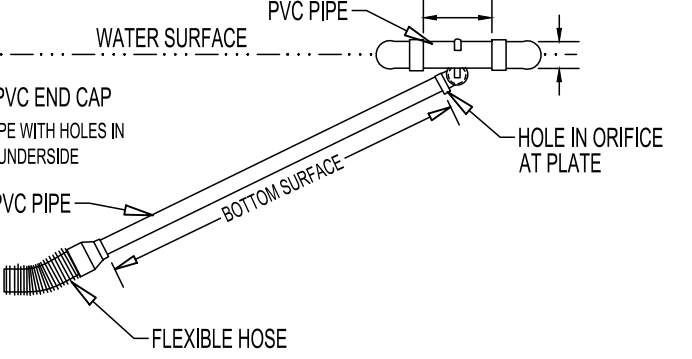
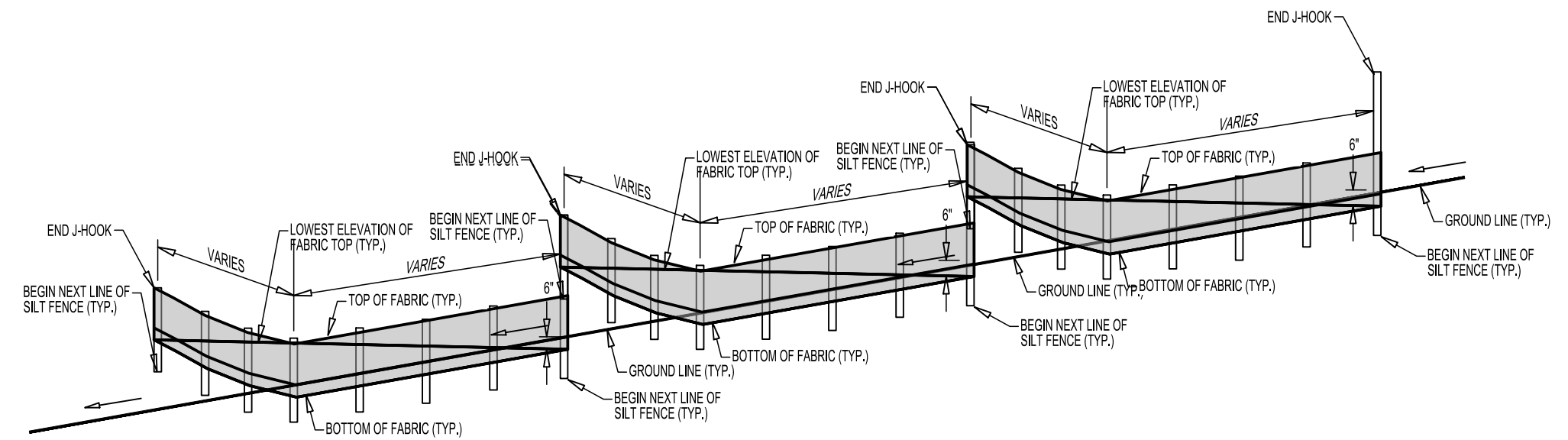


Figure 6-31.4

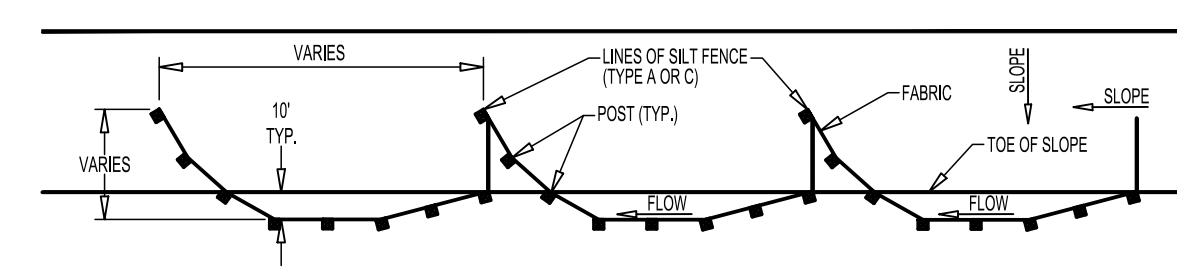
TO BE SHOWN ON THE EROSION, SEDIMENTATION AND POLLUTION CONTROL PLAN
WHEN A FLOATING SURFACE SKIMMER IS USED, SHOW THE FOLLOWING
INFORMATION ALONG WITH EACH SEDIMENT POND, TRAP OR BASIN BEING USED ON
SITE

- 1. POND TRAP OR BASIN SIZE, LENGTH* (TOP AND BOTTOM), WIDTH* (TOP AND BOTTOM) AND DEPTH = **BASIN SIZE- 35, 632.98 CF**
- 2. TIME TO DRAIN (HRS)= **72 HOURS**
- 3. SKIMMER DIMENSIONS (ORIFICE AND HEAD SIZE)** **SKIMMER SIZE - 4"**
ORIFICE PERCENTAGE - 55%
- 4. MANUFACTURER'S NAME **FAIRCLOTH SKIMMER**

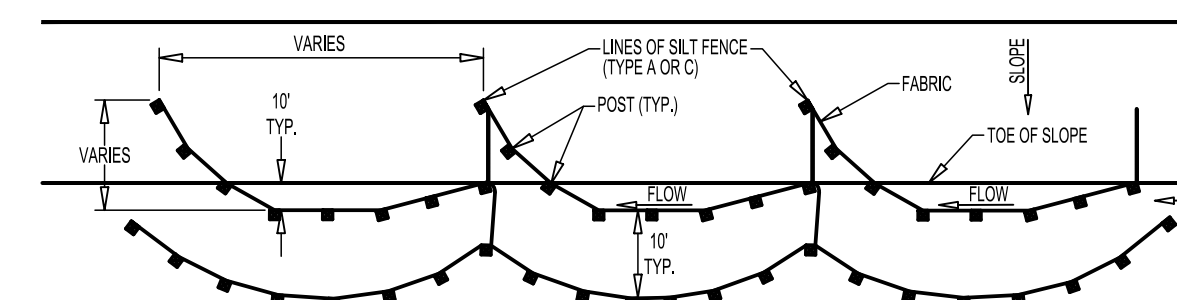
*FEET,**INCHES



SECTION



SINGLE ROW SILT FENCE - PLAN



DOUBLE ROW SILT FENCE - PLAN

J-HOOK DETAIL
N.T.S.

TYPICAL J HOOK SPACING		
SLOPE PERCENT	TYPE OF SILT FENCE	MIN. SPACING (FT)
1%-2%	TYPE A	100'+
2%-3%	TYPE A	50'+
3%-4%	TYPE C	50'+
4%-5%	TYPE C	25'+

NOTE:
1. IF THE GRADE IS BETWEEN 0 AND 1 PERCENT, THE SILT FENCE SHALL BE PLACED ACROSS THE DITCH.
2. TEMPORARY SILT FENCE SHALL NOT BE PLACED WITHIN STATE WATERS.

FI-Co

GSNCC 2016 Edition

PURPOSE
To trap suspended sediment, heavy metals and hydrocarbons (TSS) in runoff water from construction sites for water clarification.

CONDITIONS
This standard applies to graded or cleared areas where seedlings may not have a suitable growing season to produce an erosion resistant cover. Full cover shall be established within a 60-day period.

Water clarification and the removal of turbidity will usually require the addition of flocculants, polymers, polyacrylamides (PAM), chitosan and other chemicals that cause soil particles to bind together, become heavy and settle to the bottom of a sediment trap, sediment basin or become entrapped in other BMPs. This practice is not intended for application to surface waters of the state. It is intended for application within construction storm water ditches and storm drainages that feed into pre-constructed ponds or basins or other BMPs.

Fabric and Local Laws
FACo applications shall comply with all federal, local laws, rules or regulations governing FACo. The operator is responsible for securing applicable required permits, if needed. This standard does not contain the text of the federal or local laws governing Flocculants Coagulants.

Planting Considerations
Some settings of flocculant soil particles requires very slow moving (100) water. chemical additives should never be introduced into an outlet BMP where water leaves the property or enters state waters. In all cases where chemical additives are used to reduce turbidity, it is essential to include a sediment basin or sediment trap before using a pump and treat treatment system.

CRITERIA
Application rates shall conform to manufacturer's guidelines for application. Only anionic forms of FACo shall be used. Following are examples of FACo applications within construction storm water ditches or drainages that feed into sediment basins or other BMPs:

- FACo Bags or Sacs that are installed directly in a ditch, pipe or culvert.
- FACo treated ditch crosses (i.e. flow racks, weirs, or concrete logs) installed or used in conjunction with FACo.
- Granulated FACo treated rock check checks.
- Ditch checks with attached FACo Bags or Sacs.
- Addition of granular FACo directly into a ditch.
- Erosion control blankets and turf reinforcement mats that have been inoculated with a FACo.
- Pump and Treat systems that use mechanical mixing with a chemical treatment of a FACo.

Operation and Maintenance
Application rates shall conform to manufacturer's guidelines for application. Maintenance shall consist of muzzing FACo via one of means above when turbidity levels are no longer met or the FACo is used up. Blocks, bricks, socks/bags and bags shall be maintained when sediment accumulates on the products.

FLOCCULANTS COAGULANTS - (FI-Co)

NOTE: CONTRACTOR SHALL PROVIDE
PHYSICAL BARRIER SUCH AS PLASTIC
SHEETING OR TEMPORARY ROOFS ON
ALL BUILDING MATERIALS, BUILDING
PRODUCTS, CONSTRUCTION WASTES,
LANDSCAPE MATERIALS, FERTILIZERS,
PESTICIDES, HERBICIDES,
DETERGENTS, SANITARY WASTE AND
OTHER SUCH MATERIALS IN ORDER TO
MINIMIZE EXPOSURE TO
PRECIPITATION AND STORMWATER.



georgia civil
CIVIL ENGINEERING
LANDSCAPE ARCHITECTURE
LAND SURVEYING

311 N. Main St. Ste. 101, Unit C
P.O. Box 896 | Madison, GA 30650
P: 706.342.1104

www.georgiacivil.com

Professional Seal



Project Information

COVINGTON FIRE STATION #23
9155 HIGHWAY 36
COVINGTON, GA 30014
ZONING: CM - CORRIDOR MIXED USE

DRAWING DATE:	5/15/2026
DRAWN BY:	DLD
CHECKED BY:	JPB

REVISIONS	
DATE:	DESCRIPTION:
5/15/2026	ADD. COMMENTS

© Copyright 2026 georgia civil, inc.
This document and its reproduction are the property of Georgia Civil, Inc. and may not be reproduced, published, or used in whole or in part without the written consent of Georgia Civil, Inc.

EROSION,
SEDIMENTATION &
POLLUTION CONTROL
DETAILS

Sheet Number

C-6.7