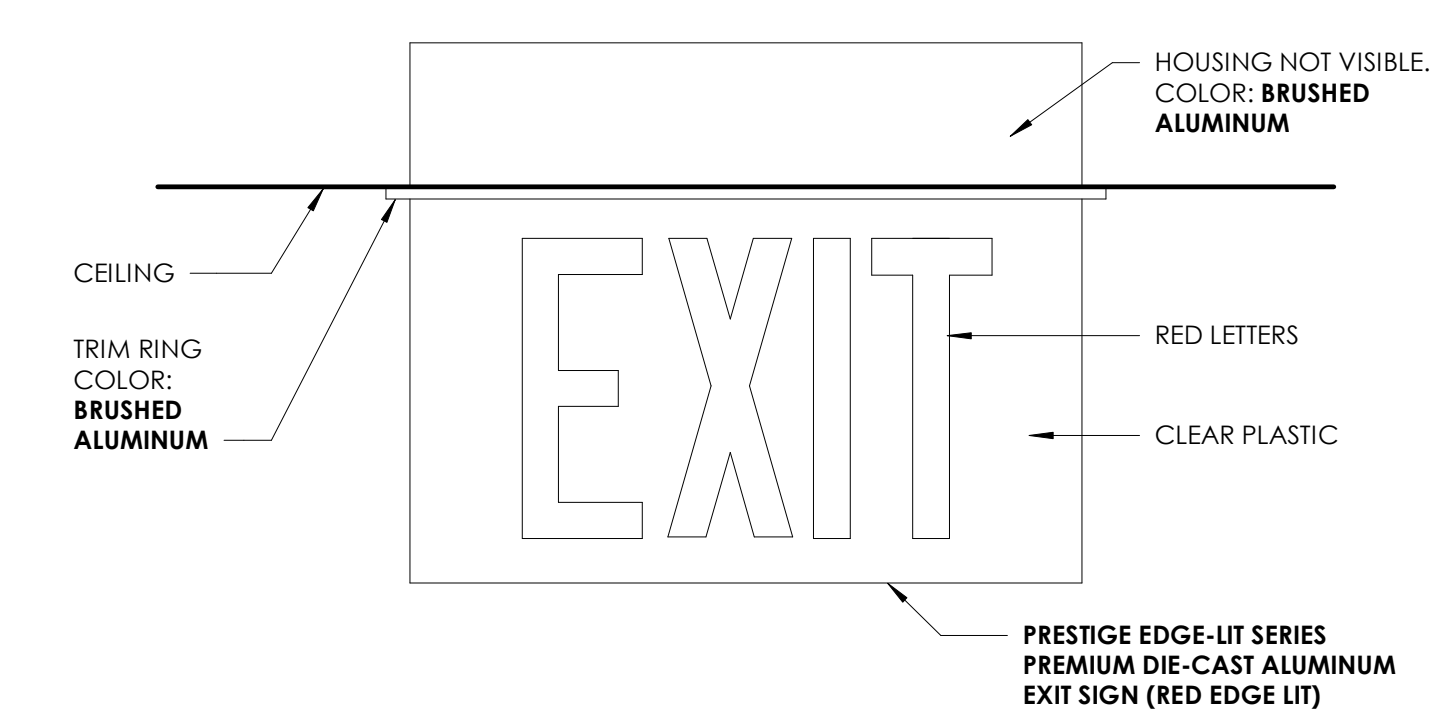
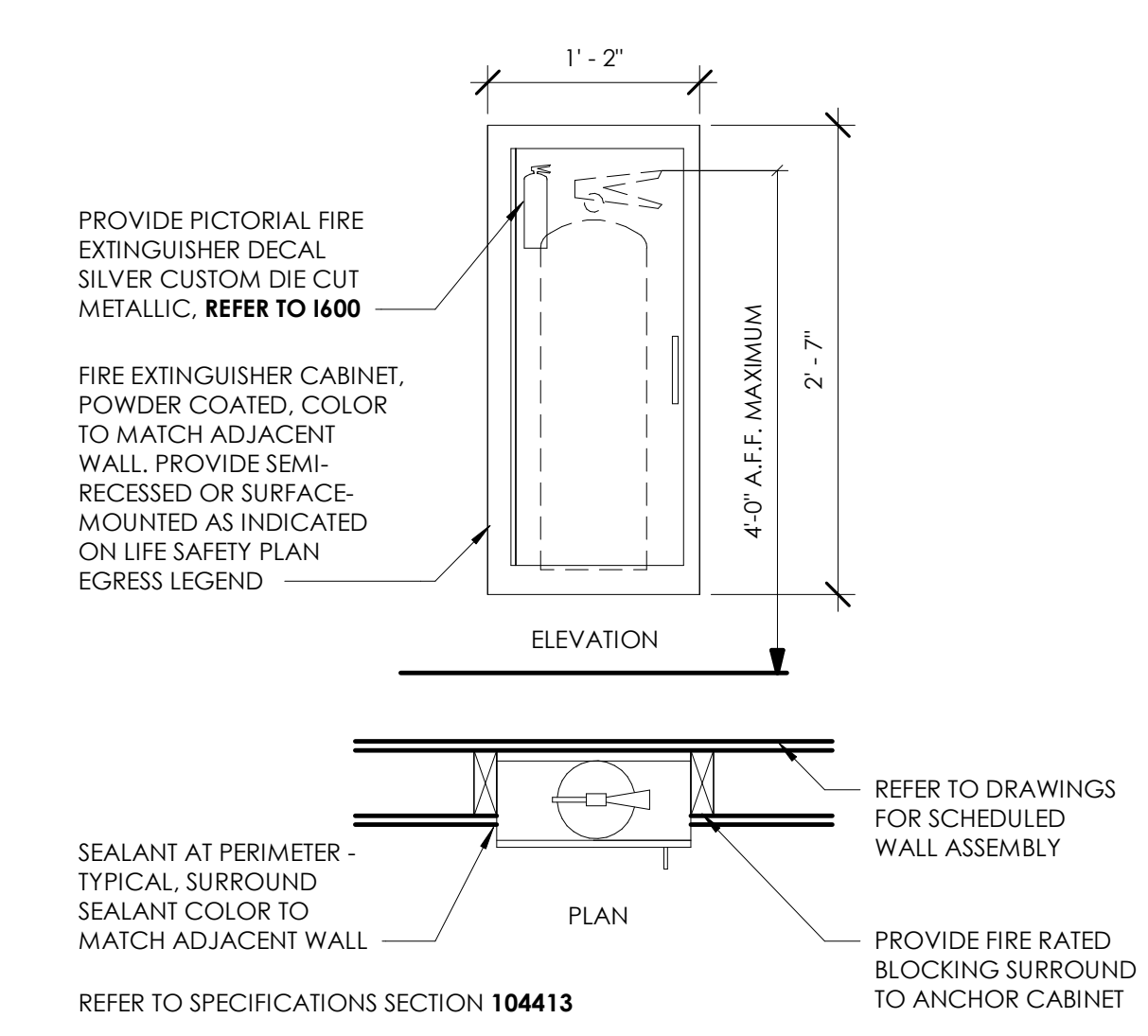


LIFE SAFETY PLAN / EGRESS LEGEND

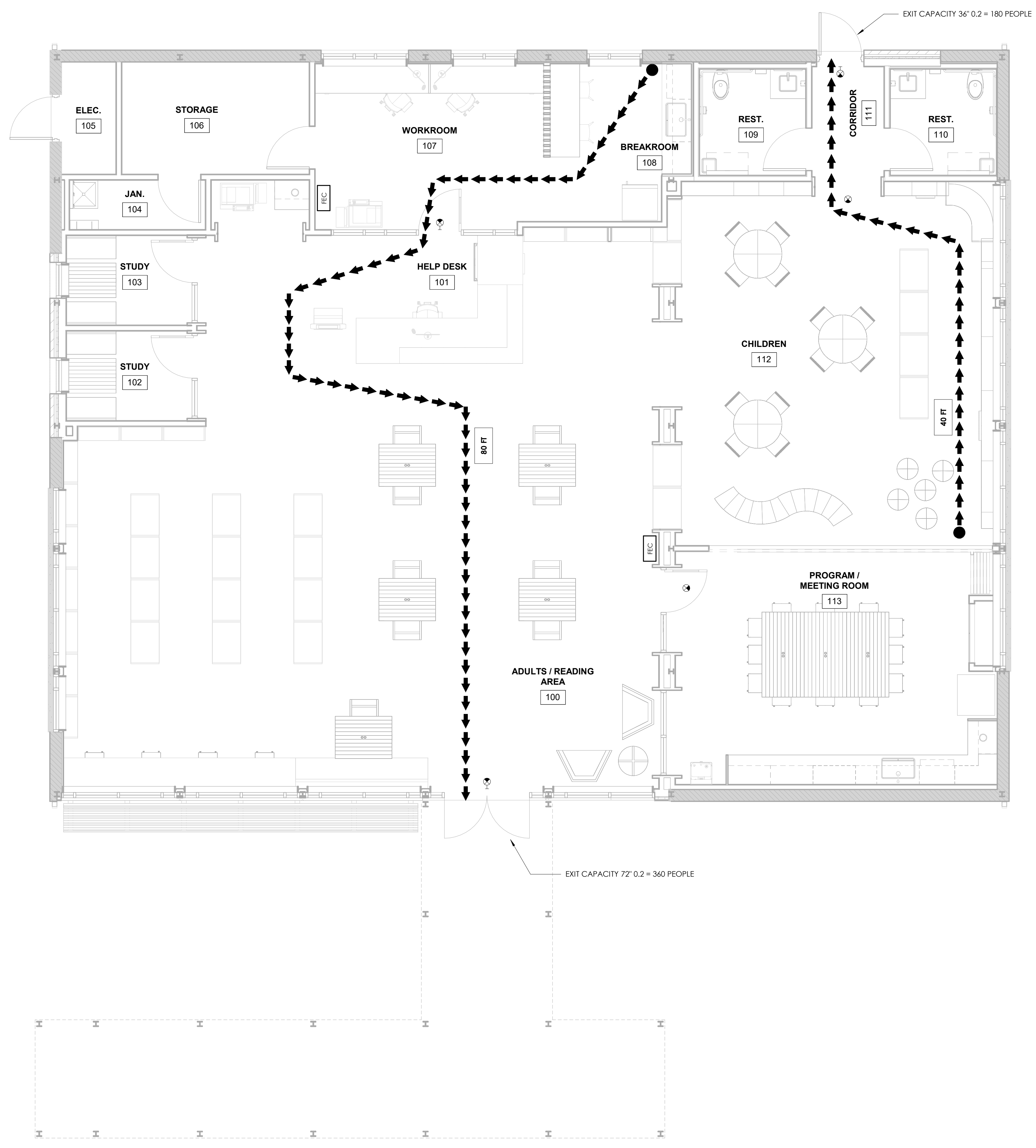
- ➔➔➔ TRAVEL DISTANCE: MAXIMUM 200'-0" PER NFPA 7.6.1 AND 12.2.6.2
- # DISTANCE
- POINT OF CHOICE
- #" EGRESS DOOR OPENING WIDTH IN INCHES
- FEC SEMI-RECESSED FIRE EXTINGUISHER CABINET REFER TO SPECIFICATIONS FOR EXTINGUISHERS
- ⊙ FOR ALL EXIT DEVICES REFER TO ELECTRICAL DRAWINGS FOR LOCATION, QUANTITIES AND SPECIFICATIONS.
- PRESTIGE EDGE-LIT SERIES PREMIUM DIE-CAST ALUMINUM EXIT SIGN (RED EDGE LIT)



2 EXIT SIGN MOUNTING DETAIL
G200 3" = 1'-0"



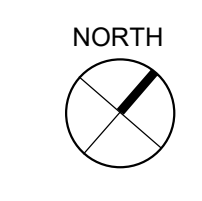
3 SEMI-RECESSED FIRE EXTINGUISHER - FEC
G200 1" = 1'-0"



LIFE SAFETY PLAN GENERAL NOTES

- CODE REFERENCES AND SECTIONS HAVE BEEN LISTED FOR CONVENIENCE. TO THE BEST OF THE ARCHITECT'S KNOWLEDGE, THE CODE REFERENCES AND SECTIONS LISTED ARE CURRENT. HOWEVER, THE CONTRACTOR AND HIS SUB CONTRACTORS ARE RESPONSIBLE FOR ADHERING TO THE LATEST APPROVED CODE PER THE APPLICABLE GOVERNING JURISDICTION REGARDLESS OF THE LISTED CODE REFERENCES AND SECTIONS.
- ARRANGEMENT OF THE MEANS OF EGRESS PER THE APPROPRIATE OCCUPANCY CHAPTER OF THE NFPA 101 LIFE SAFETY CODE 2024 EDITION SHALL BE PROVIDED.
 - DOORS SHALL MEET THE REQUIREMENTS OF THE NFPA 101 LIFE SAFETY CODE 2024 EDITION, CHAPTER 7.2.1.
 - PANIC HARDWARE SHALL BE PROVIDED FOR ALL EXIT DOORS. SWING AND FORCE TO OPEN DOORS SHALL MEET THE REQUIREMENTS OF THE NFPA 101 LIFE SAFETY CODE 2024 EDITION CHAPTER 7.2.1.4 AND 7.2.1.7.
 - OPERABLE PARTS SHALL BE OPERABLE WITH ONE HAND AND SHALL NOT REQUIRE TIGHT GRASPING, PINCHING, OR TWISTING OF THE WRIST. THE FORCE REQUIRED TO ACTIVATE OPERABLE PARTS SHALL BE FIVE POUNDS MAXIMUM. 309.4 ADA STANDARD 2010 EDITION.
 - EXIT DOORS SHALL NOT BE SUBJECT TO THE USE OF A KEY OR REQUIRE SPECIAL KNOWLEDGE TO OPERATE PER NFPA 101 LIFE SAFETY CODE 2024 EDITION CHAPTER 7.2.1.5.3.
 - SELF CLOSING DEVICES SHALL BE PROVIDED ON DOORS IN A MEANS OF EGRESS AND SHALL MEET THE REQUIREMENTS OF THE NFPA 101 LIFE SAFETY CODE 2024 EDITION CHAPTER 7.2.1.8.
 - FLOOR FINISH ON BOTH SIDES OF A DOOR SHALL BE LEVEL FOR A DISTANCE EQUAL TO THE WIDTH OF THE WIDEST SINGLE DOOR (ON BOTH SIDES).
 - SMOKE DETECTORS ARE TO BE INSTALLED PER THE REQUIREMENTS OF THE OCCUPANCY CHAPTER OF NFPA 101 LIFE SAFETY CODE 2024 EDITION.
 - RAISED CHARACTERS SHALL COMPLY WITH 703.2 AND SHALL BE DUPLICATED IN BRAILLE COMPLYING WITH 703.3. RAISED CHARACTERS SHALL BE INSTALLED IN ACCORDANCE WITH 703.4. 703.2 ADA STANDARD 2010 EDITION.
 - (FIRE EXTINGUISHERS) SHALL BE LOCATED PER THE REQUIREMENTS OF NFPA 10, TABLE 3.2.1. (LOW HAZARD). THE SIZE SHALL BE A MINIMUM OF 2 A 10 BC (REFER TO PLANS) AND SHALL BE INSTALLED AT A MAXIMUM OF 48" ABOVE THE FINISHED FLOOR TO THE TOP OF THE HANDLE. 1 REQUIRED PER 3,000 S.F. OR 75 FEET OF TRAVEL DISTANCE.
 - CLASS INTERIOR FINISH SHALL COMPLY WITH 2020 NFPA 101:TABLE A-10.2.2
 - BARRIER-FREE ACCESSIBILITY SHALL COMPLY WITH ADA STANDARD 2010 EDITION SECTION 404.
 - CONTRACTOR TO PROVIDE EMERGENCY LIGHTING, STROBES, ALARMS, FIRE PULLS AND SMOKE DETECTORS AS REQUIRED BY CODE - REFER TO ENGINEERING DRAWINGS.
 - ALL INSULATING MATERIALS WITHIN WALL, FLOORS, ROOF AND CEILING CAVITIES SHALL HAVE A FLAME SPREAD INDEX OF LESS THAN 25 AND A SMOKE DEVELOPED INDEX OF LESS THAN 45 AS DETERMINED IN ACCORDANCE WITH ASTM 84.
 - DRINKING FOUNTAIN(S) TO BE PROVIDED TO SATISFY LATEST PLUMBING CODE.
 - MEANS OF EGRESS SHALL BE ILLUMINATED IN ACCORDANCE WITH 2024 NFPA LIFE SAFETY CODE SECTION 7.8.
 - EMERGENCY LIGHTING SHALL BE PROVIDED IN ACCORDANCE WITH 2024 NFPA LIFE SAFETY CODE SECTION 7.9.
 - MEANS OF EGRESS SHALL HAVE SIGNS IN ACCORDANCE WITH 2024 NFPA LIFE SAFETY CODE SECTION 7.10.
 - INTERIOR FINISH SHALL BE IN ACCORDANCE WITH 2024 NFPA LIFE SAFETY CODE SECTION 10.2.

1 LIFE SAFETY FLOOR PLAN
G200 1/4" = 1'-0"



NOTE:
REFER TO DRAWING I420 FOR ITEMS CONTRACTOR IS TO PROVIDE AND INSTALL.
CONTRACTOR TO COORDINATE INSTALLATION OF ITEMS NOT IN CONTRACT WITH PROVIDERS.

COPYRIGHT © 2024 CAS ARCHITECTURE, P.C. ALL RIGHTS RESERVED. THIS DOCUMENT AND ANY REPRODUCTIONS IN WHOLE OR IN PART, ARE INSTRUMENTS OF SERVICE AND ARE THE SOLE PROPERTY AND COPYRIGHT OF CAS ARCHITECTURE, P.C. AND MAY NOT BE REPRODUCED, COPIED, PUBLISHED, USED OR CONVEYED IN ANY MANNER WITHOUT WRITTEN PERMISSION FROM CAS ARCHITECTURE, P.C. THESE DOCUMENTS HAVE BEEN PREPARED SPECIFICALLY FOR THIS PROJECT. THEY ARE NOT SUITABLE FOR USE ON OTHER PROJECTS OR IN OTHER LOCATIONS.

THIS DOCUMENT WAS CREATED ELECTRONICALLY. THIS MEDIA SHOULD NOT BE CONSIDERED A CERTIFIED DOCUMENT UNLESS IT HAS BEEN PROPERLY SEALED AND ORIGINALLY SIGNED BY A REGISTERED ARCHITECT OF GA ARCHITECTURE, P.C.

THESE PLANS ARE COMPLEMENTARY. THEREFORE THE CONTRACTOR SHALL SEE THE ARCHITECTURAL, STRUCTURAL, MECHANICAL, PLUMBING, AND ELECTRICAL PLANS AND SPECIFICATIONS, WHEN REQUIRED BY ANY ONE SHALL BE BINDING AS REQUIRED BY ALL. THE INTENTION OF THE DOCUMENTS INCLUDE ALL LABOR MATERIALS, EQUIPMENT AND OTHER ITEMS NECESSARY FOR THE PROPER EXECUTION AND COMPLETION OF THE WORK. THE CONTRACTOR SHALL BE RESPONSIBLE FOR THE COORDINATION OF THE WORK OF ALL TRADES.

NO.	DATE	ISSUANCE / REVISIONS