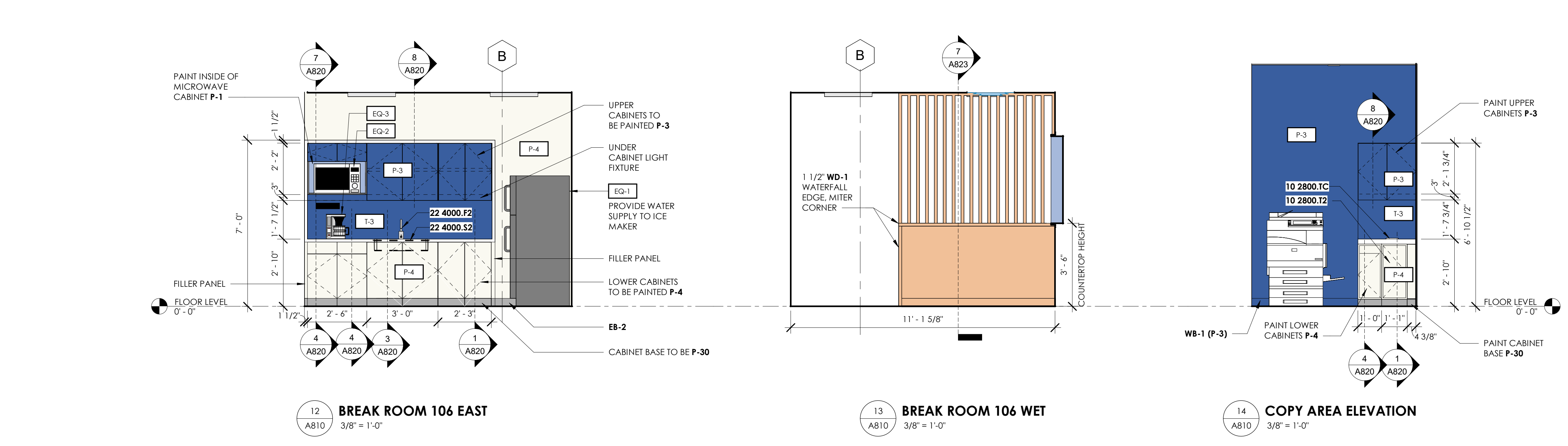
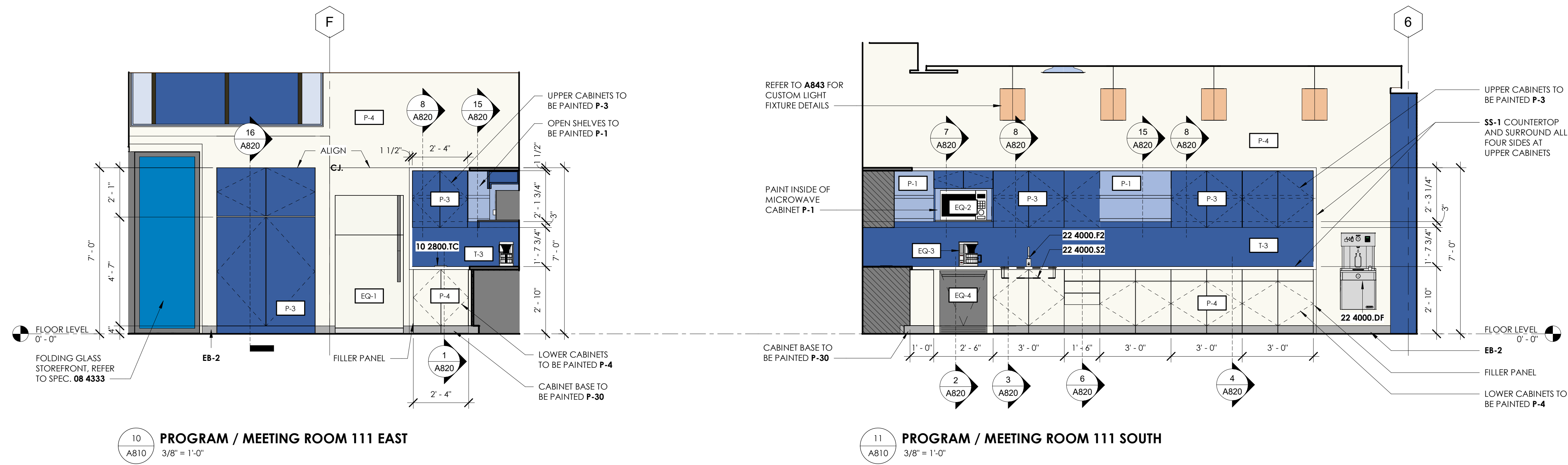
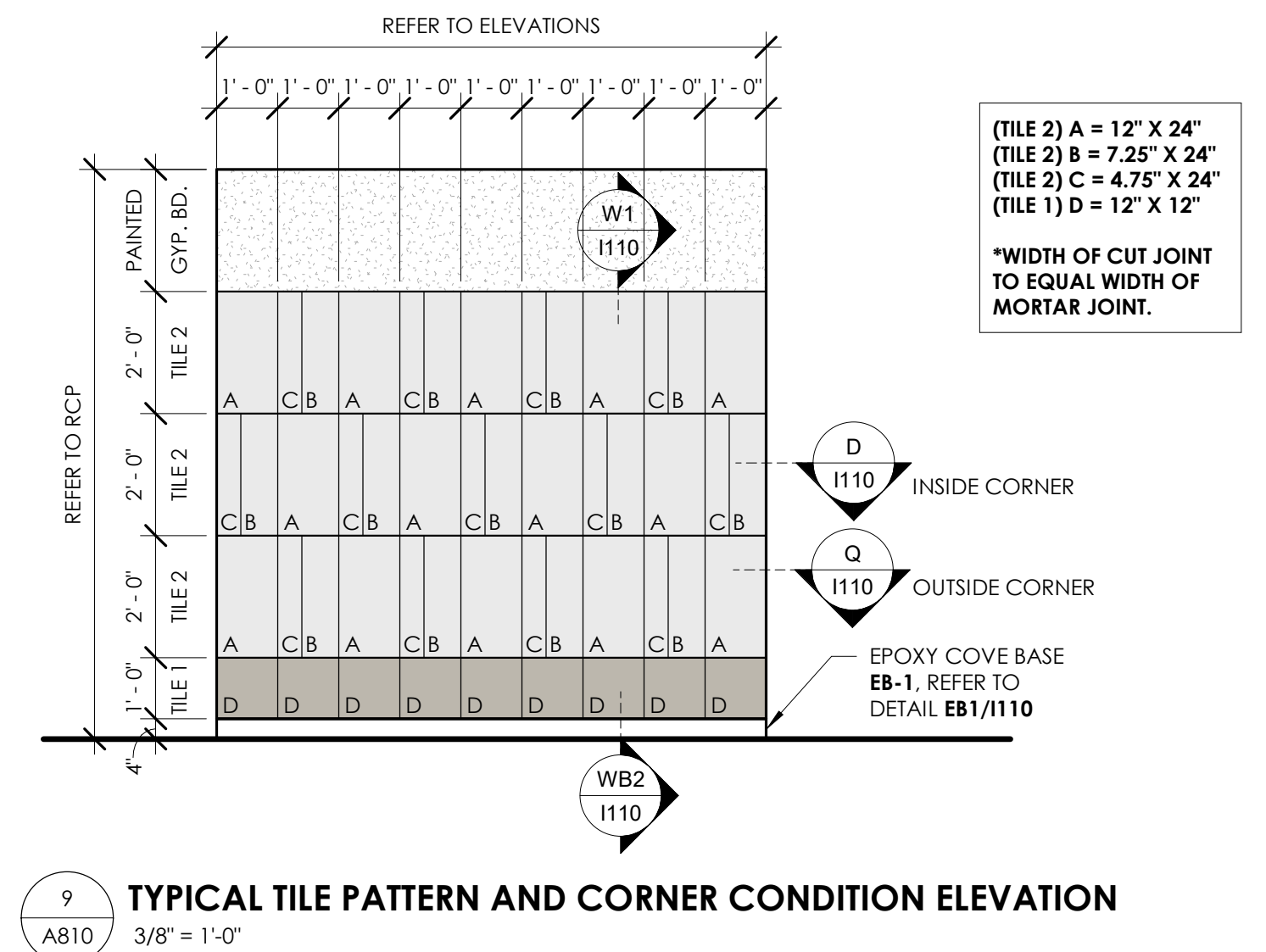
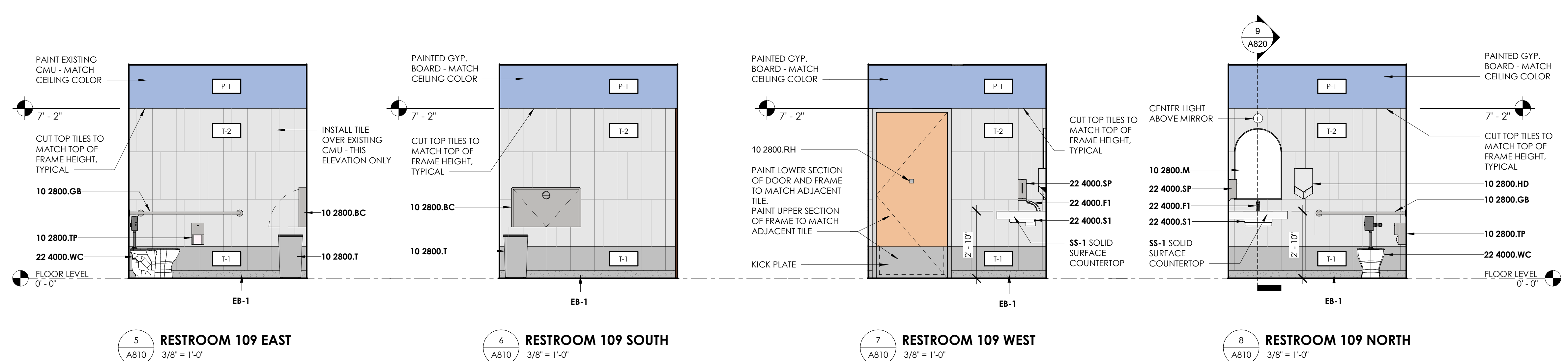
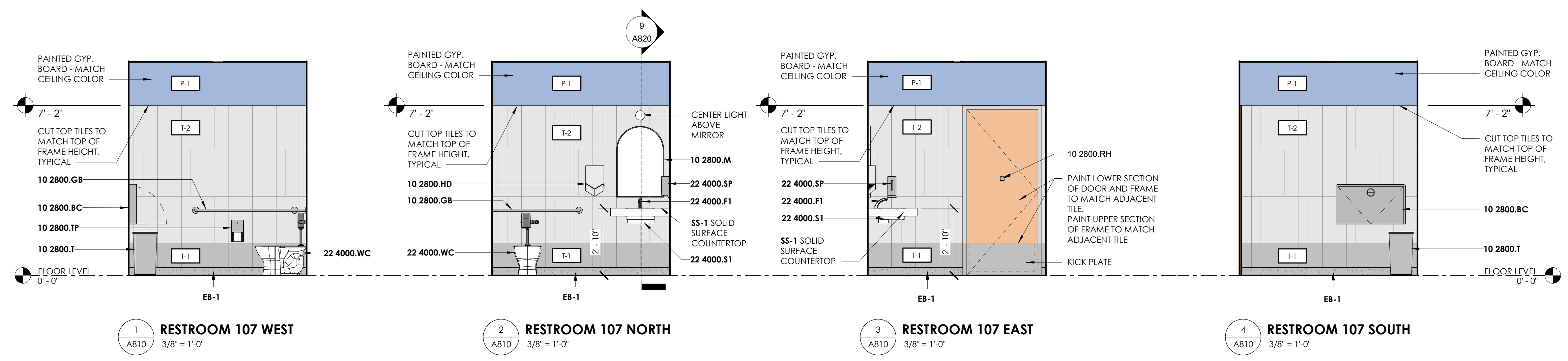


IF SEALED, DO NOT COPY

PROJECT

**COLLINS P. LEE MEMORIAL LIBRARY**  
237 HARRISBURG ROAD SW, MILLEDGEVILLE, GA 31061



- NOTES:
- DISCUSS WITH ARCHITECT WHERE TO START TILE PATTERN, PRIOR TO INSTALLATION.
  - WALL TILES MAY NEED TO BE CUT TO CREATE WALL PATTERN. USE 3/8" WIDESAW BLADE TO CREATE A 3/8" WIDE JOINT. ALL OTHER JOINTS BETWEEN TILE TO BE 3/8" CONSISTENT JOINT WIDTH EVERYWHERE.

ITEM	PRODUCT	PRODUCT DESCRIPTION
10 2800.BC	GRAB BAR	BOBRICK, KOALA, KARE KB310-SSWM, HORIZONTAL SURFACE MOUNTED BABY STATION, STAINLESS STEEL FINISH, PROVIDE BLOCKING.
10 2800.GB	GRAB BAR	BOBRICK, B-5897, 1 1/4" DIA. GRAB BAR, STAINLESS WITH PEENED GRIPPING, NO. 4 FINISH (SATIN BRUSHED).
10 2800.HD	HAND DRYER	DISON, V-BLADE HAND DRYER, AB12-M-LV
10 2800.MH	MOP HOLDER	KOHLER, K-30637, MIRROR WITH POLISHED CHROME FRAME
10 2800.RH	ROBE HOOK	BOBRICK, B-223 X 24, MOP AND BROOM HOLDER, SATIN FINISH STAINLESS STEEL FINISH
10 2800.SP	SOAP DISPENSER	BOBRICK, B-76717, SINGLE ROBE HOOK, BRIGHT-POLISHED STAINLESS STEEL FINISH
10 2800.T	TRASH CAN	BOBRICK, B-2013, AUTOMATIC WALL-MOUNTED FOAM SOAP DISPENSER, SATIN-FINISH STAINLESS STEEL
10 2800.T2	TRASH CHUTE	BOBRICK, B-2260, SATIN STAINLESS STEEL FINISH
10 2800.TP	TOILET PAPER DISPENSER	GLGCBAL INDUSTRIAL, W626-1749K, PLASTIC, BLACK.
10 2800.US	UTILITY SHELF	BOBRICK, B-5327, SATIN STAINLESS STEEL FINISH
22 4000.F1	FAUCET (RESTROOMS)	BOBRICK, B-4288, SATIN STAINLESS STEEL FINISH
22 4000.F2	FAUCET (BREAK ROOM & PROGRAM ROOM)	AMERICAN SPECIALTIES 0692-618
22 4000.JS	JANITOR SINK	REFER TO PLUMBING DRAWINGS: SLOAN, EBF-415 OPTIMA BATTERY POWER, DECK-MOUNTED LOW BODY FAUCET, CHROME FINISH.
22 4000.S1	SINK (RESTROOMS)	REFER TO PLUMBING DRAWINGS: SLOAN, EBF-750 OPTIMA BATTERY POWER, DECK-MOUNTED LOW BODY FAUCET, CHROME FINISH.
22 4000.S2	SINK (BREAKROOM & PROGRAM ROOM)	REFER TO PLUMBING DRAWINGS: SLOAN, EBF-750 OPTIMA BATTERY POWER, DECK-MOUNTED LOW BODY FAUCET, CHROME FINISH.
22 4000.WC	WATER CLOSET	REFER TO PLUMBING DRAWINGS: TOTO, CT725CUF, HIGH EFFICIENCY TOILET WITH TOP SPUD INLET, FINISH: #01 COTTON - TOILET SEAT TO BE 19" A.F.F. (TYPICAL)
22 4713.DF	DRINKING FOUNTAIN	ELKAY WRCGRNBWSK, SINGLE DRINKING FOUNTAIN WITH BOTTLE FILLER

- \*NOTE
- GENERAL CONTRACTOR TO REVIEW PLUMBING DRAWINGS IN COMPARISON TO ARCHITECT'S FIXTURE SCHEDULE. ANY DISCREPANCIES SHOULD BE ADDRESSED BY CONTRACTOR PRIOR TO PURCHASING OF FIXTURES.
  - GENERAL CONTRACTOR TO REVIEW ELECTRIC DRAWINGS IN COMPARISON TO ARCHITECT'S FIXTURE SCHEDULE. ANY DISCREPANCIES SHOULD BE ADDRESSED BY CONTRACTOR PRIOR TO PURCHASING OF FIXTURES.
  - REFER TO G130 FOR STANDARD REACH RANGES, MOUNTING HEIGHTS AND OTHER REQUIREMENTS.
  - REFER TO SHEET 110 FOR TILE SPECIFICATIONS AND CORNER DETAILS.
  - PROVIDE WHITE SNAP ON DRAIN PIPE PROTECTION UNDER SINKS.

**EQUIPMENT SCHEDULE - REFER TO DRAWING I420 FOR RESPONSIBILITIES**

TAG	SPECS	ITEMS	QTY	PRODUCT DESCRIPTION	SPACE
CONTRACTOR PROVIDED AND CONTRACTOR INSTALLED					
EQ-1	113101	REFRIGERATOR	2	FRIGIDAIRE FFH1835VS, 18 CU.FT., TOP FREEZER REFRIGERATOR WITH INTERNAL ICE MAKER, STAINLESS STEEL FINISH.	BREAKROOM / PROGRAM ROOM
EQ-2	113101	MICROWAVE	2	GE PROFILE SERIES COUNTER TOP SENSOR MICROWAVE OVEN (PE57227SLSS) - FINGERLESS STAINLESS STEEL FINISH.	BREAKROOM / PROGRAM ROOM
EQ-3	113101	COFFEE MAKER	2	KEURIG K-1500 COMMERCIAL COFFEE MAKER WITH POUR-OVER RESERVOIR	BREAKROOM / PROGRAM ROOM
EQ-4	113101	DISHWASHER	1	WHIRLPOOL WD1550SAPZ, STAINLESS STEEL	PROGRAM ROOM