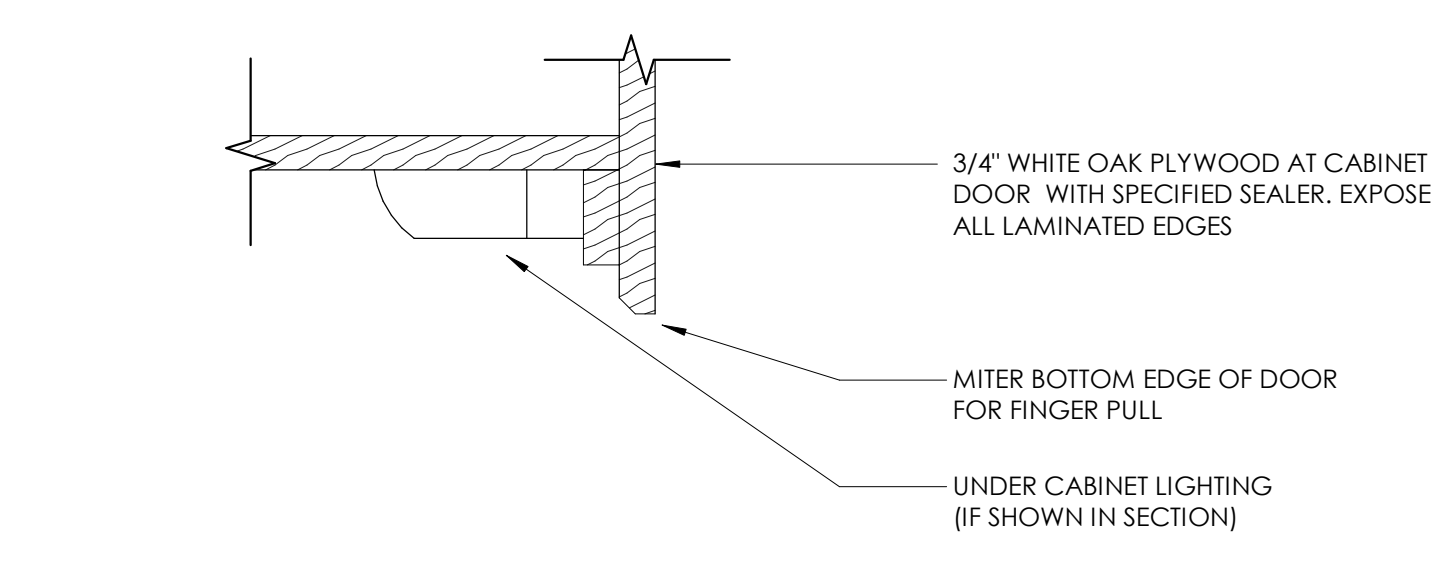
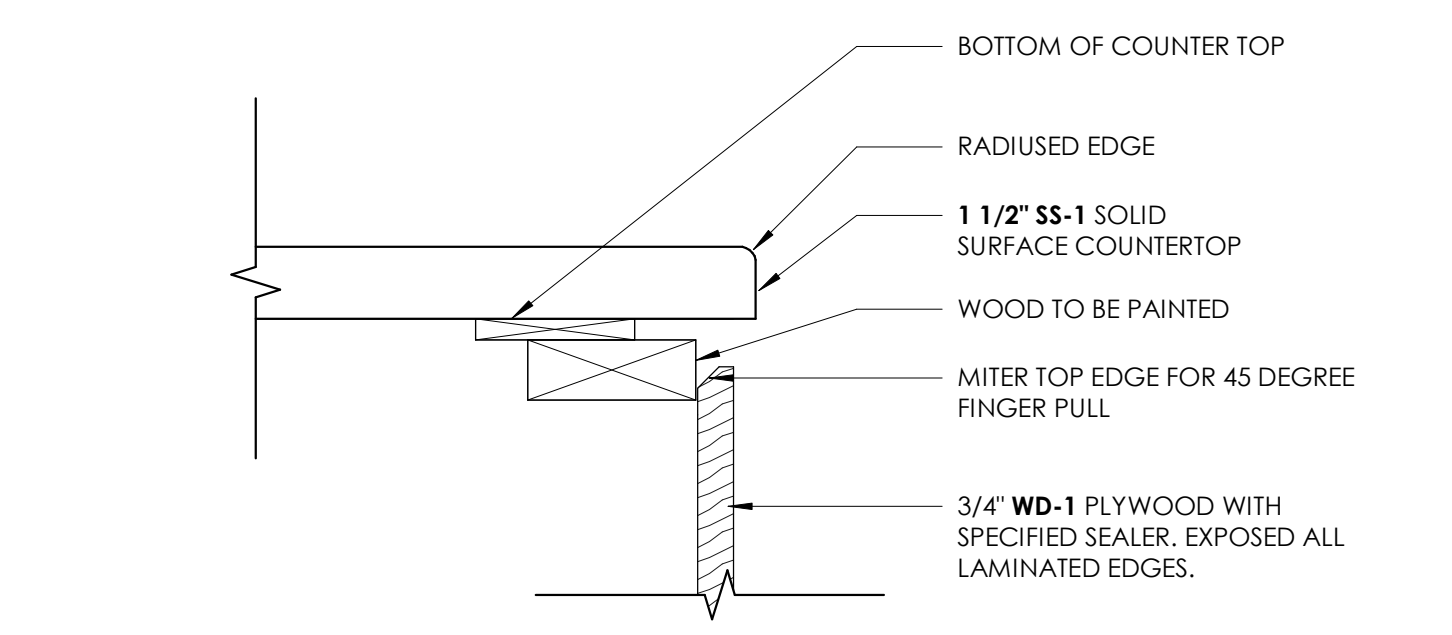


SHEET SPECIFIC NOTES

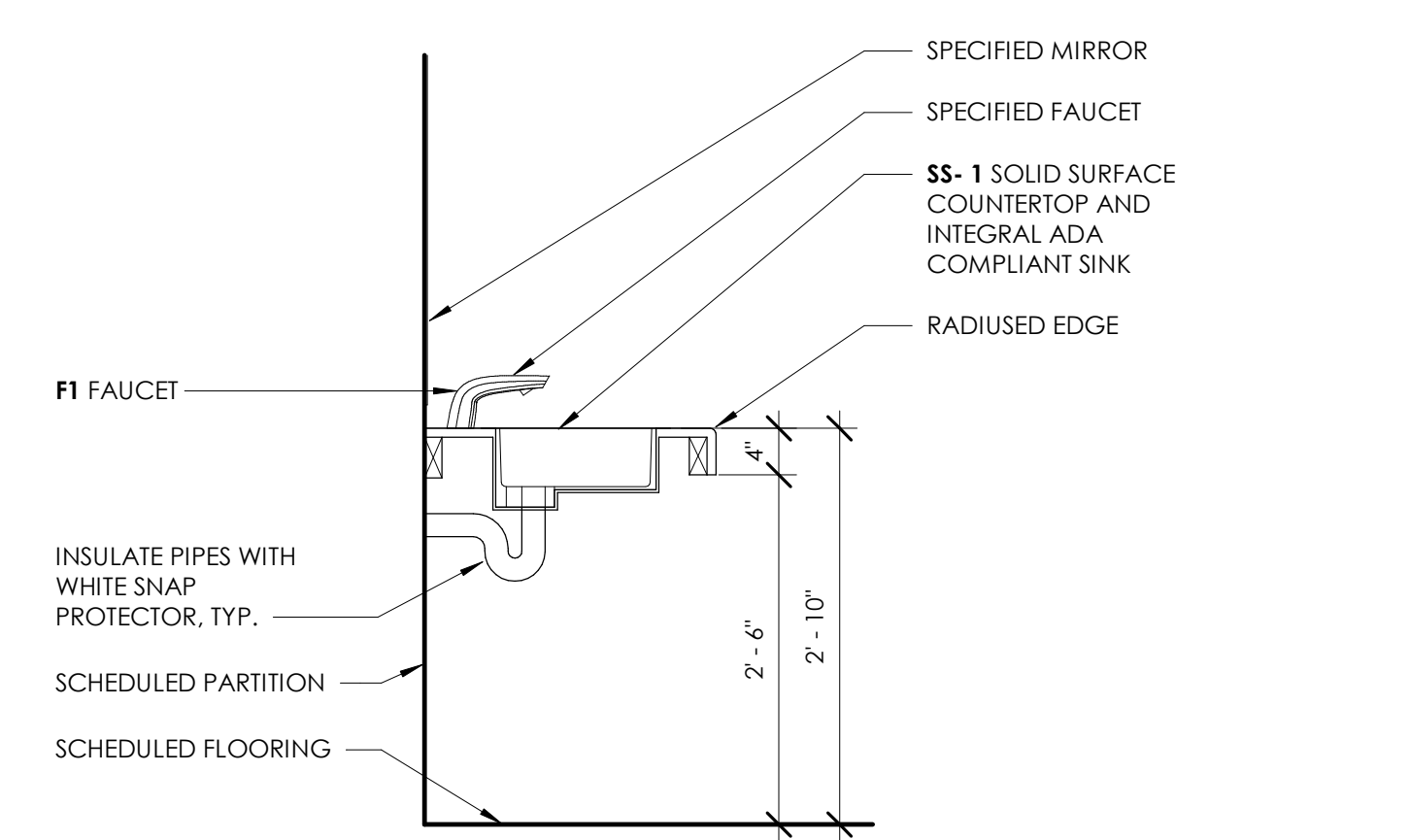
- REFER TO STANDARD FIXTURE SCHEDULE ON A230.
- MILLWORK TO BE APPROVED BY OWNER AND ARCHITECT PRIOR TO ORDERING, FABRICATION, MANUFACTURING AND/OR INSTALLATION.
 - CONTRACTOR SHALL VERIFY ALL DIMENSIONS IN THE FIELD PRIOR TO FABRICATION, MANUFACTURING AND/OR INSTALLATION OF MILLWORK.
 - FOR ALL MILLWORK CONTRACTOR TO VERIFY WIDTH AND HEIGHT OF DRAWERS AND CABINETS ARE ACCEPTABLE TO OWNER PRIOR TO ORDERING, FABRICATION, MANUFACTURING AND/OR INSTALLATION.
 - ALL MILLWORK SHALL BE PLANT ASSEMBLED, WHERE DESIGN, DELIVERY OR SITE CONDITIONS REQUIRE. MILLWORK MAY BE ASSEMBLED IN COMPONENT UNITS WITH PROVISIONS MADE FOR FIELD CONNECTION. SHOP DRAWINGS MUST INDICATE UNITIZING OF MILLWORK CONSTRUCTION SO AS TO BE SUBJECT TO REVIEW BY ARCHITECT.
 - GENERAL CONTRACTOR IS RESPONSIBLE FOR PROVISION AND INSTALLATION OF ADEQUATE WALL BLOCKING FOR ATTACHMENT OF MILLWORK UNITS.
 - GENERAL CONTRACTOR IS RESPONSIBLE FOR COORDINATION OF UTILITIES OR SERVICE REQUIRED AT MILLWORK UNITS (TELEPHONE, ELECTRICAL, WATER, COMPUTER SERVICE, ETC.).
 - ALL OUTSIDE SURFACES OF MILLWORK SHALL BE **WD-1** PLYWOOD (ALL EDGES AND SIDES OF DRAWERS, INTERIORS OF SHELVES, ETC.) UNLESS NOTED OTHERWISE. A MELAMINE FINISH IS ONLY ACCEPTABLE ON INSIDES OF DRAWERS AND CABINETS.
 - LAMINATION OF ALL MILLWORK SHALL BE COMPLETED IN THE SHOP.
 - ALL EXPOSED COUNTERTOP CORNERS TO BE RADIUSSED.
 - REFER TO PROJECT MANUAL FOR FURTHER REQUIREMENTS.
 - ALL ITEMS SHOWN ON DRAWINGS TO BE PROVIDED AND INSTALLED BY CONTRACTOR UNLESS INDICATED OTHERWISE.
 - REFER TO SHEET 1110 FOR INTERIOR FINISH INFORMATION.
 - ALL MILLWORK TO BE LOCKABLE, UNLESS NOTED OTHERWISE.
 - ALL PLYWOOD SURFACE TO RECEIVE STAIN AND SEALER AS LISTED ON FINISH LEGEND 1110.
 - ALL PLYWOOD SURFACE TO RECEIVE STAIN AND SEALER AS LISTED ON FINISH LEGEND 1110.
 - MILLWORK FINISHES:
INTERIOR SURFACES NOT EXPOSED TO VIEW WITH DOORS / DRAWERS:
ALL INTERIOR MILLWORK SURFACES WITH DOORS OR DRAWERS TO BE WHITE MELAMINE.
INTERIOR SURFACES OPEN / EXPOSED TO VIEW:
ALL OPEN/VISIBLE INTERIOR SURFACES TO BE PAINTED.
EXTERIOR SURFACES:
UNLESS NOTED OTHERWISE, ALL EXTERIOR SURFACES TO BE **WD-1** WITH SPECIFIED FINISH. TYP. REFER TO ELEVATIONS FOR EXCEPTIONS.
 - ALL CABINET DOORS AND DRAWERS TO USE SLOW-CLOSE HARDWARE.



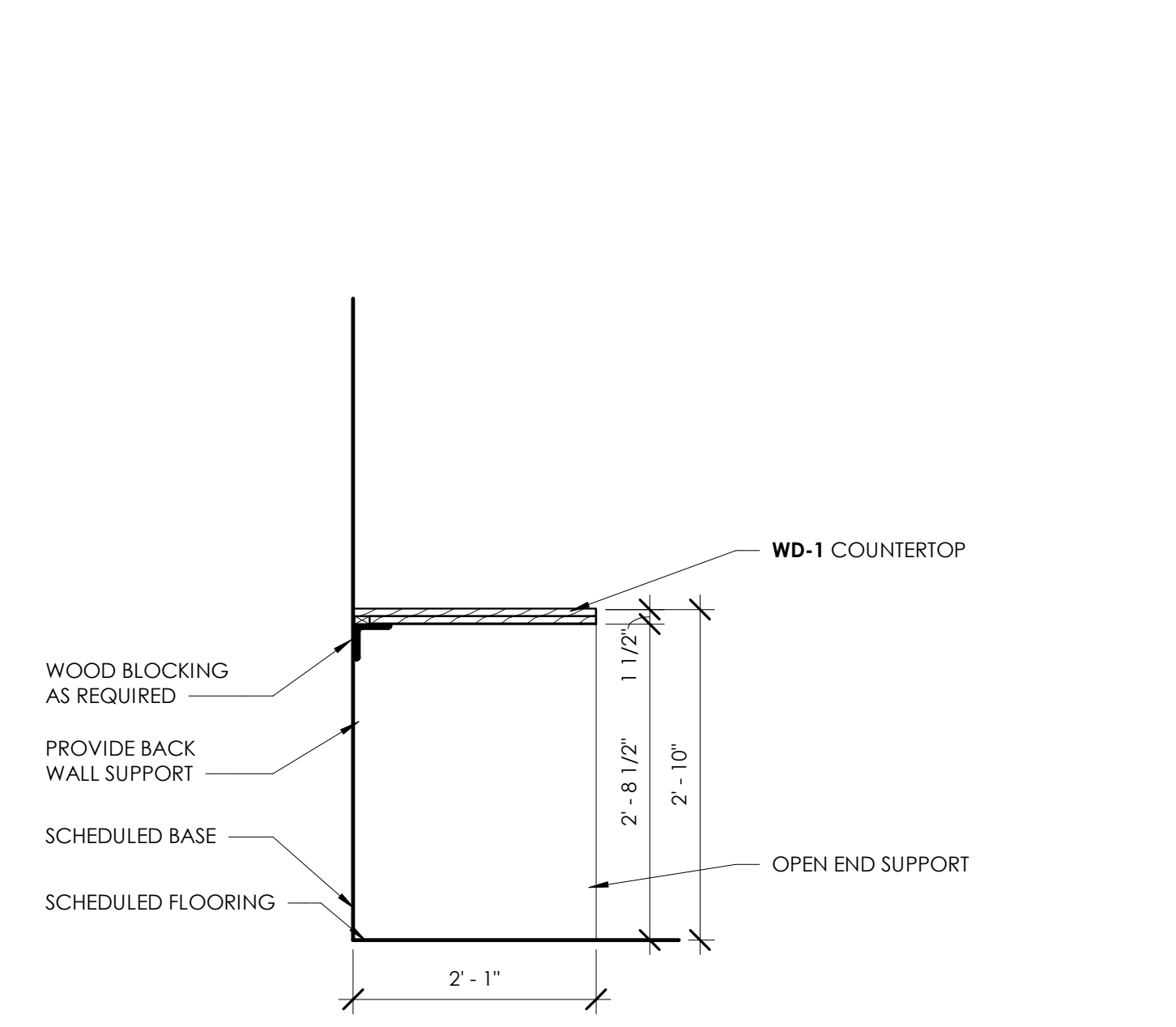
12 TYPICAL FINGER PULL DETAIL AT CABINET DOORS
3/4" = 1'-0"



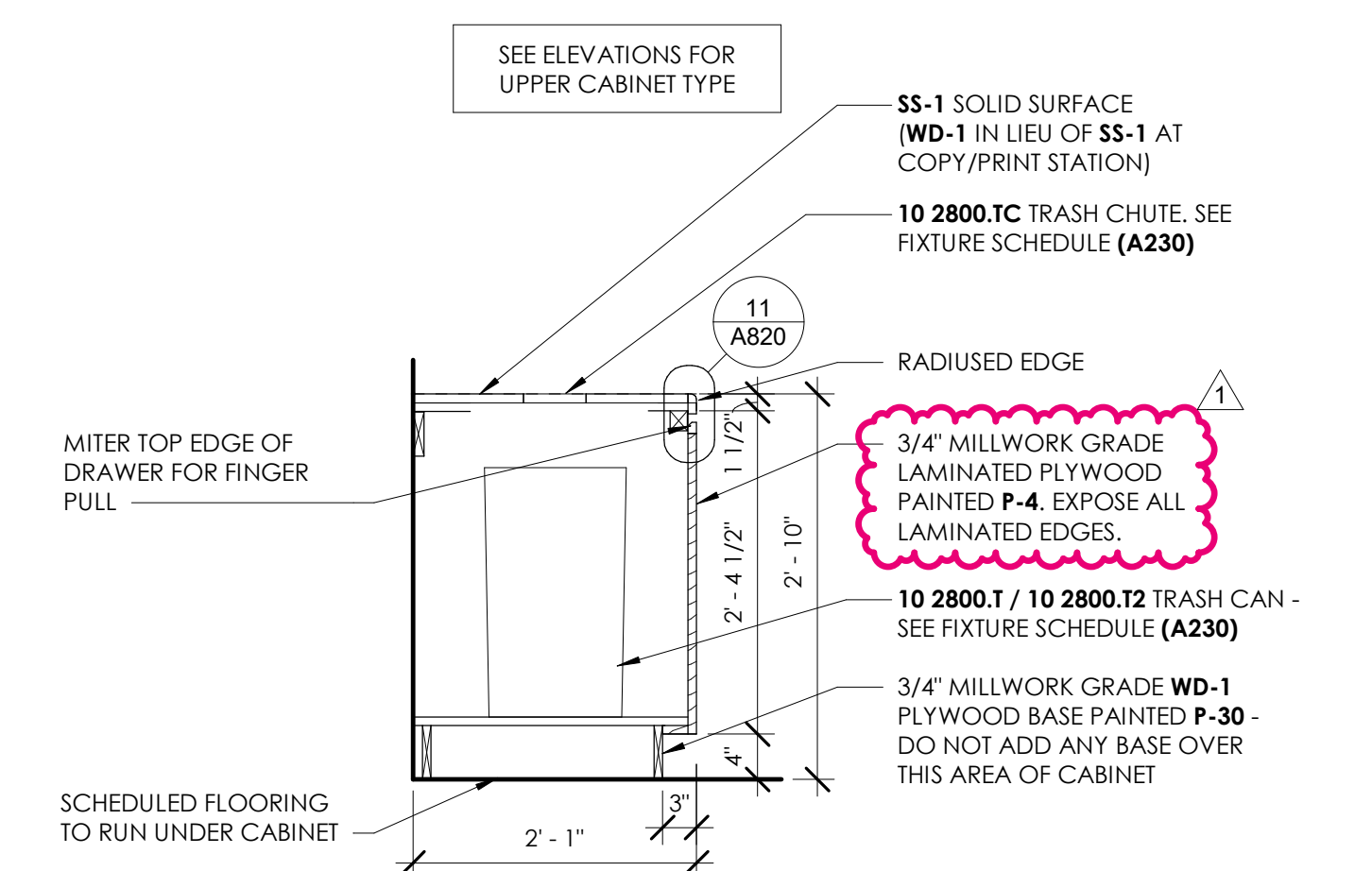
11 TYPICAL MILLWORK FINGER PULL DETAIL
3/4" = 1'-0"



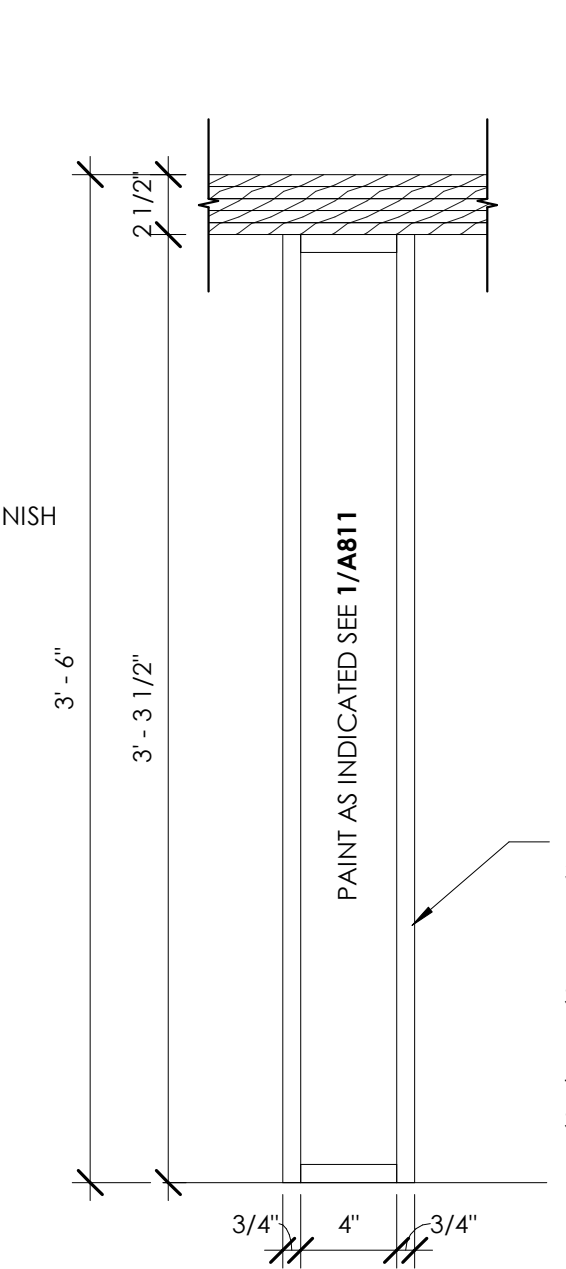
9 MILLWORK SECTION - VANITY
3/4" = 1'-0"



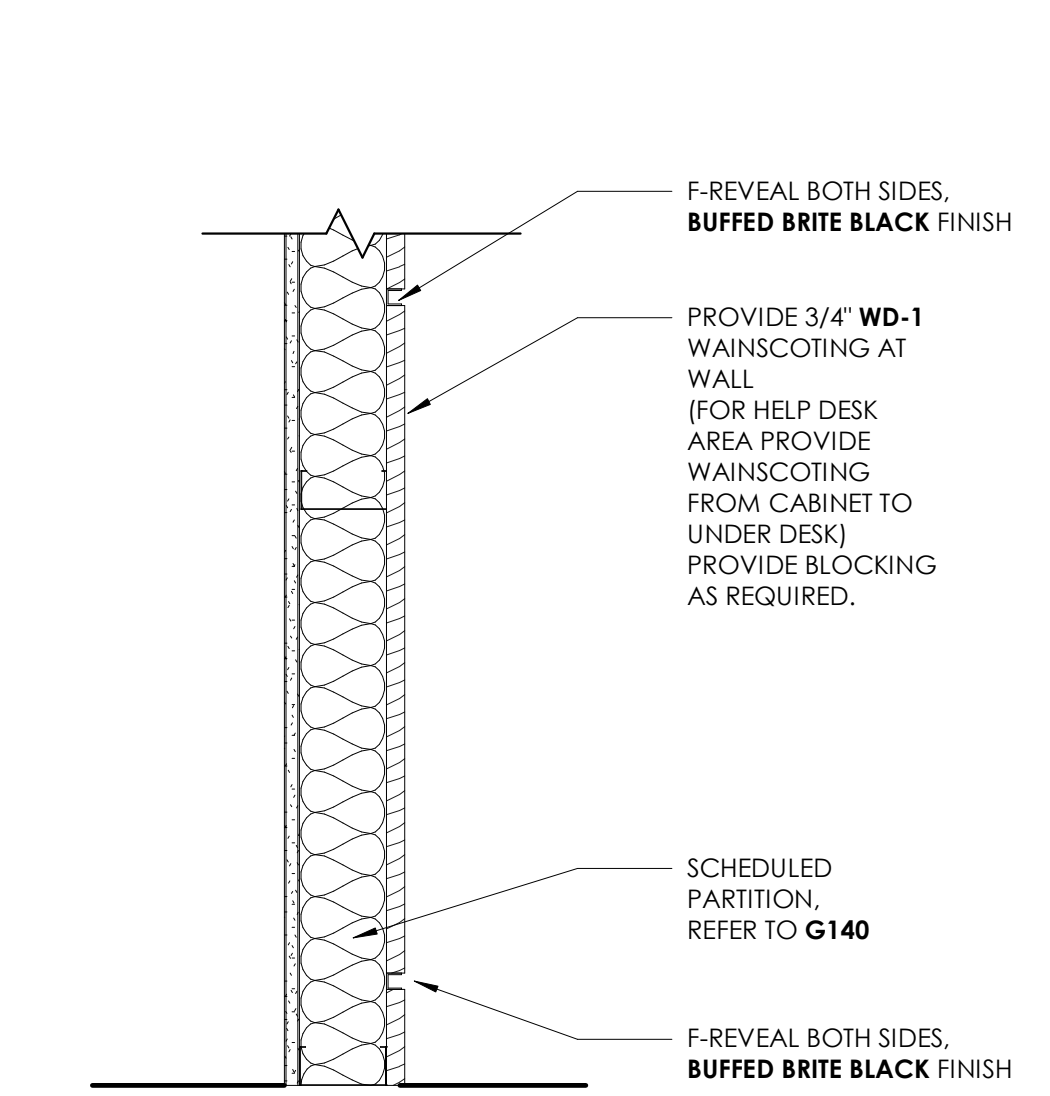
5 MILLWORK SECTION - (BC-6) BASE
3/4" = 1'-0"



1 MILLWORK SECTION - (BC-5) BASE CABINET WITH TRASH/ TRASH CHUTE
3/4" = 1'-0"



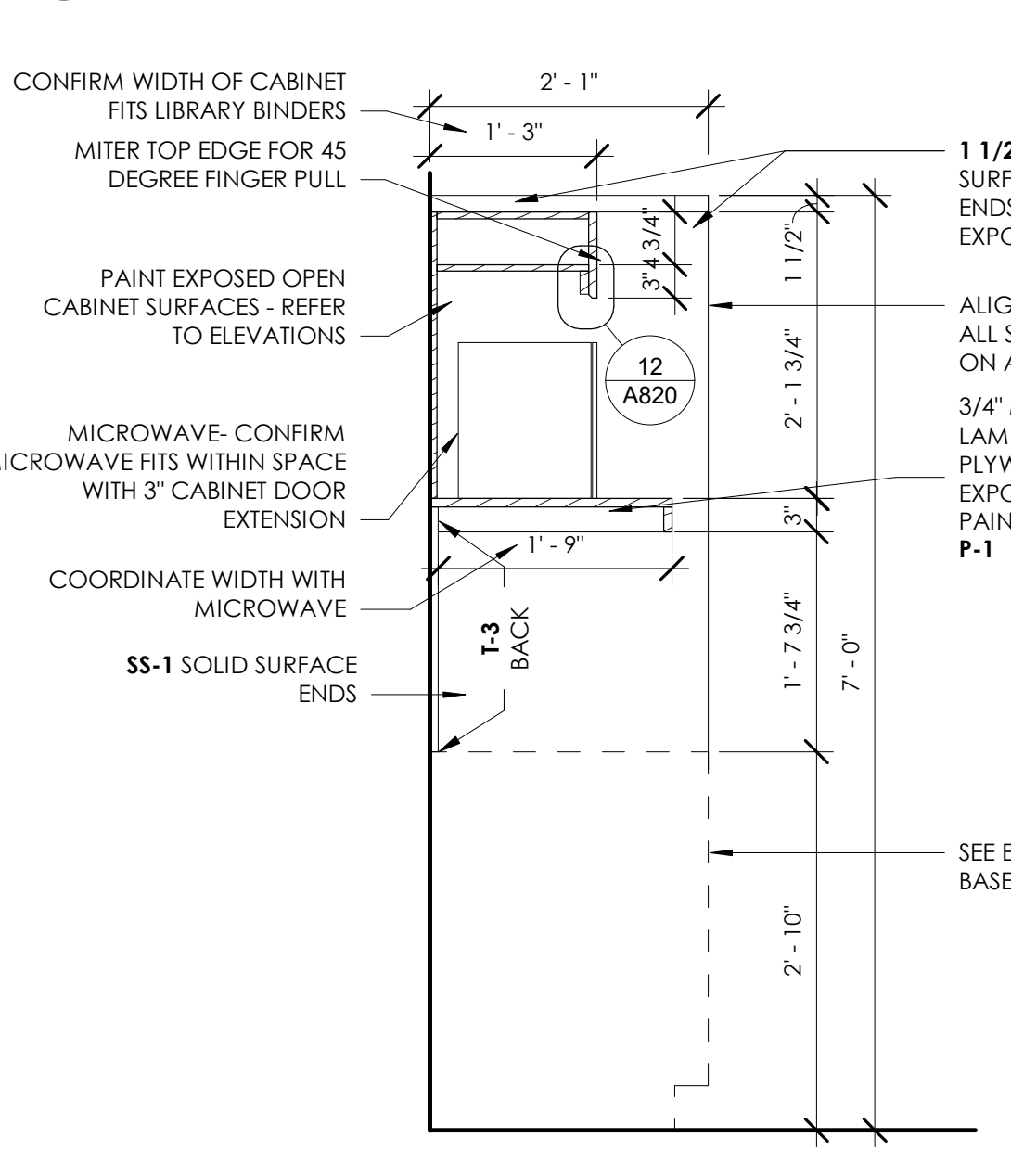
13 TYPICAL BAR TOP SUPPORT
1 1/2" = 1'-0"



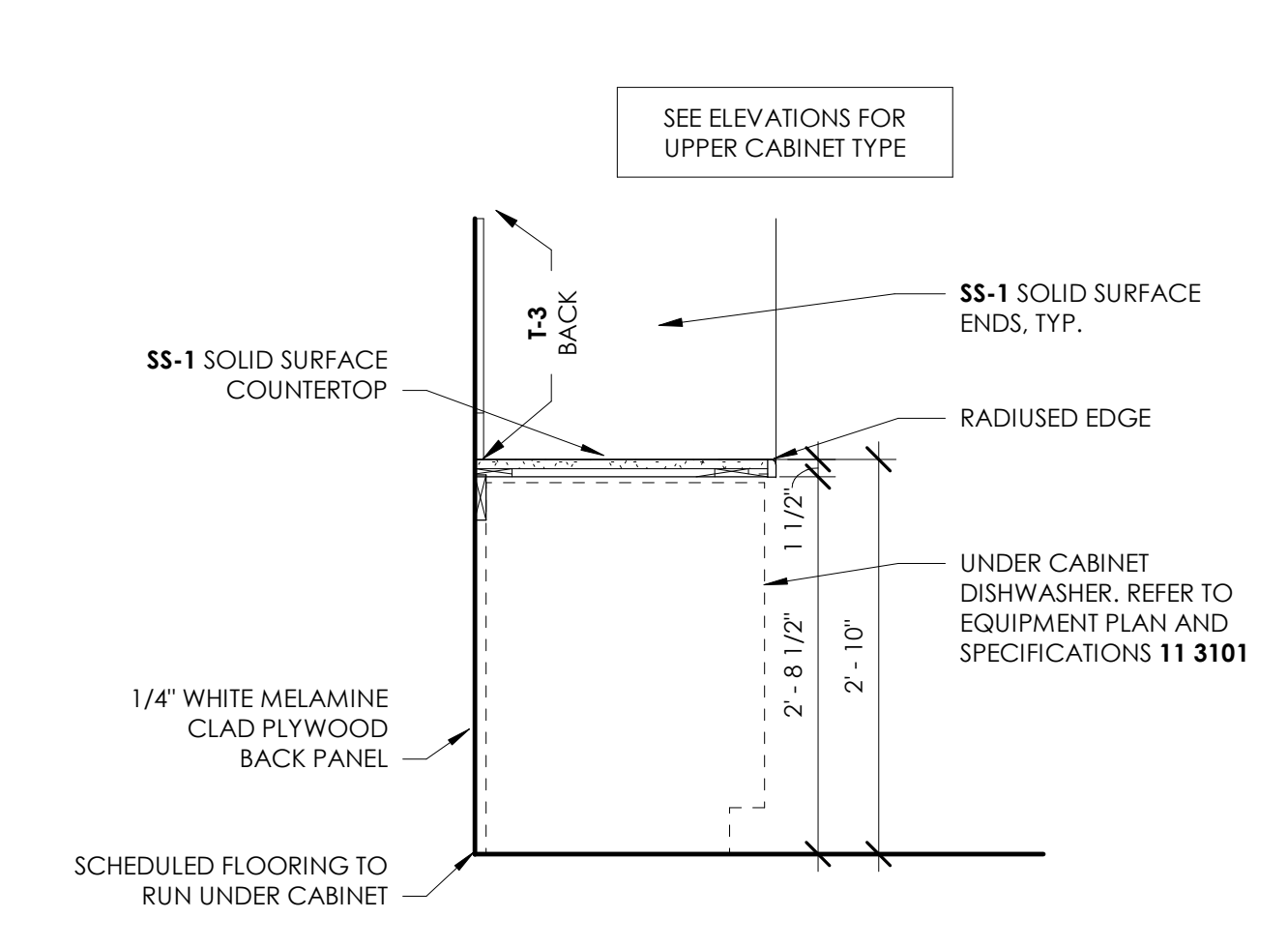
14 TYPICAL BREAKROOM 108 WOOD SCREEN WAL
1 1/2" = 1'-0"

10 MILLWORK SECTION - WAINSCOTING
1 1/2" = 1'-0"

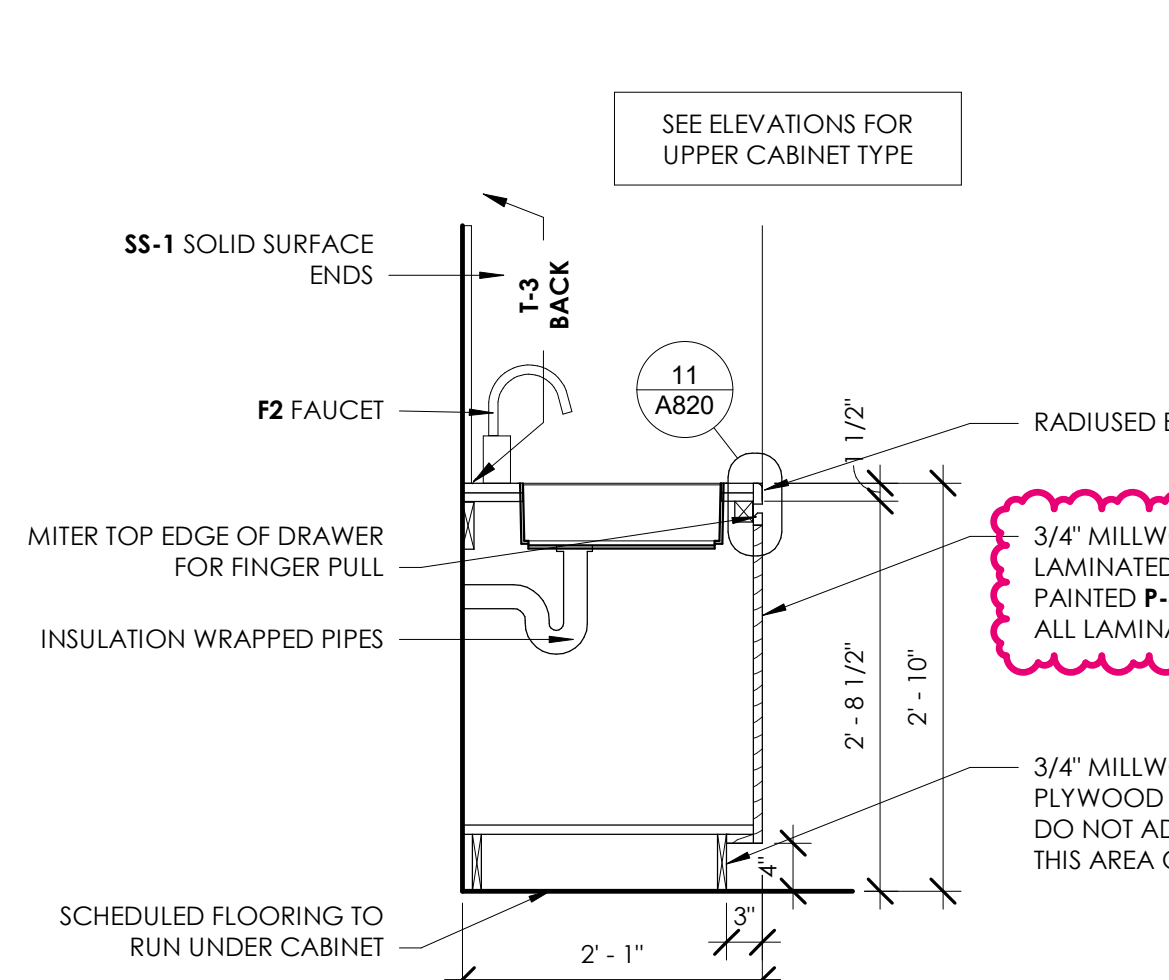
15 MILLWORK SECTION - UPPER CABINET (UC-3)
3/4" = 1'-0"



6 MILLWORK SECTION - (BC-1) BASE CABINET WITH DRAWERS
3/4" = 1'-0"



7 MILLWORK SECTION - UPPER CABINET TYPE 2 (UC-2)
3/4" = 1'-0"



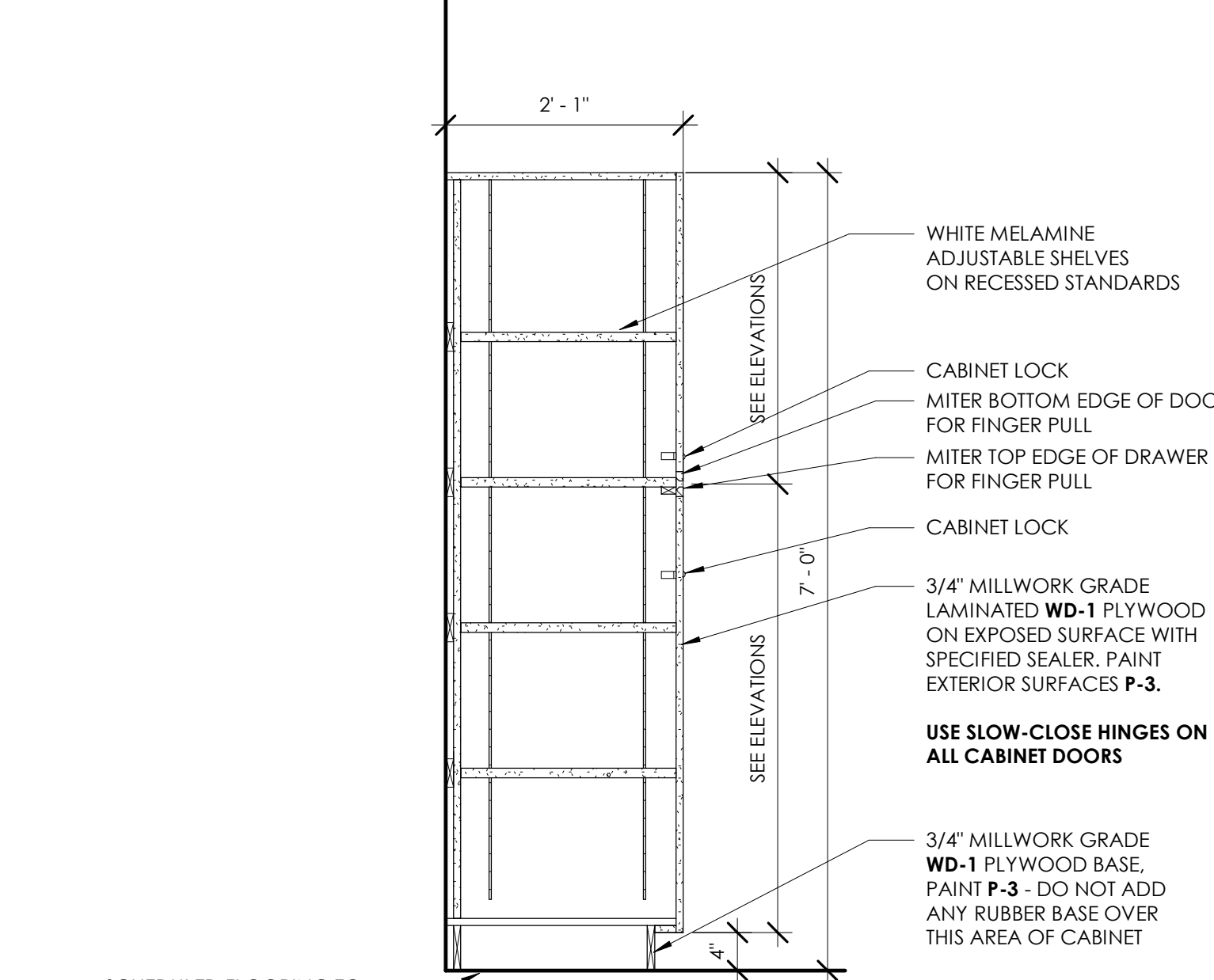
2 MILLWORK SECTION - (BC-4) BASE CABINET AT DISHWASHER
3/4" = 1'-0"

3 MILLWORK SECTION - (BC-3) BASE CABINET WITH SINK
3/4" = 1'-0"

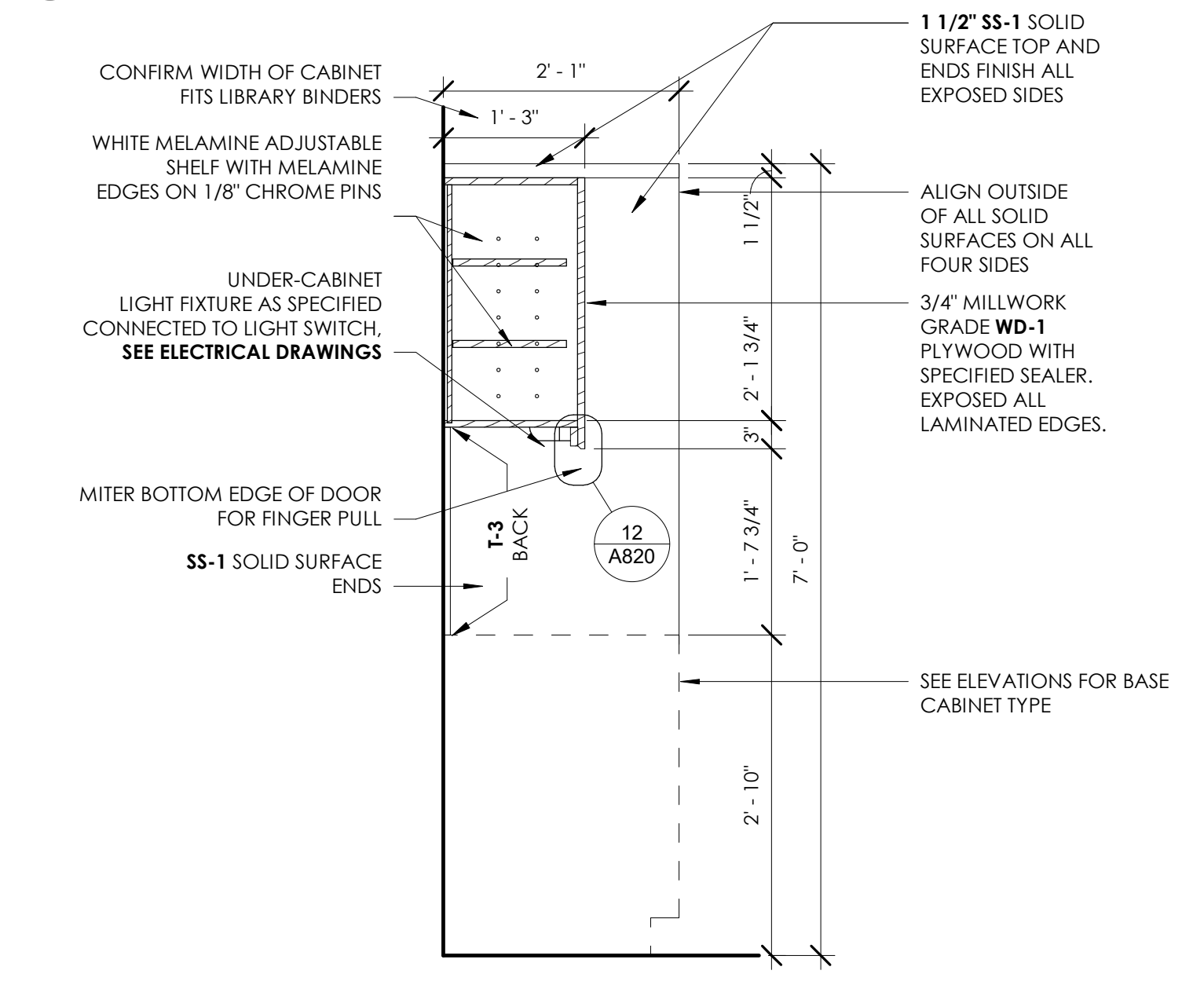
3 MILLWORK SECTION - (BC-3) BASE CABINET WITH SINK
3/4" = 1'-0"

4 MILLWORK SECTION - (BC-2) BASE CABINET WITH DRAWER AND SHELF
3/4" = 1'-0"

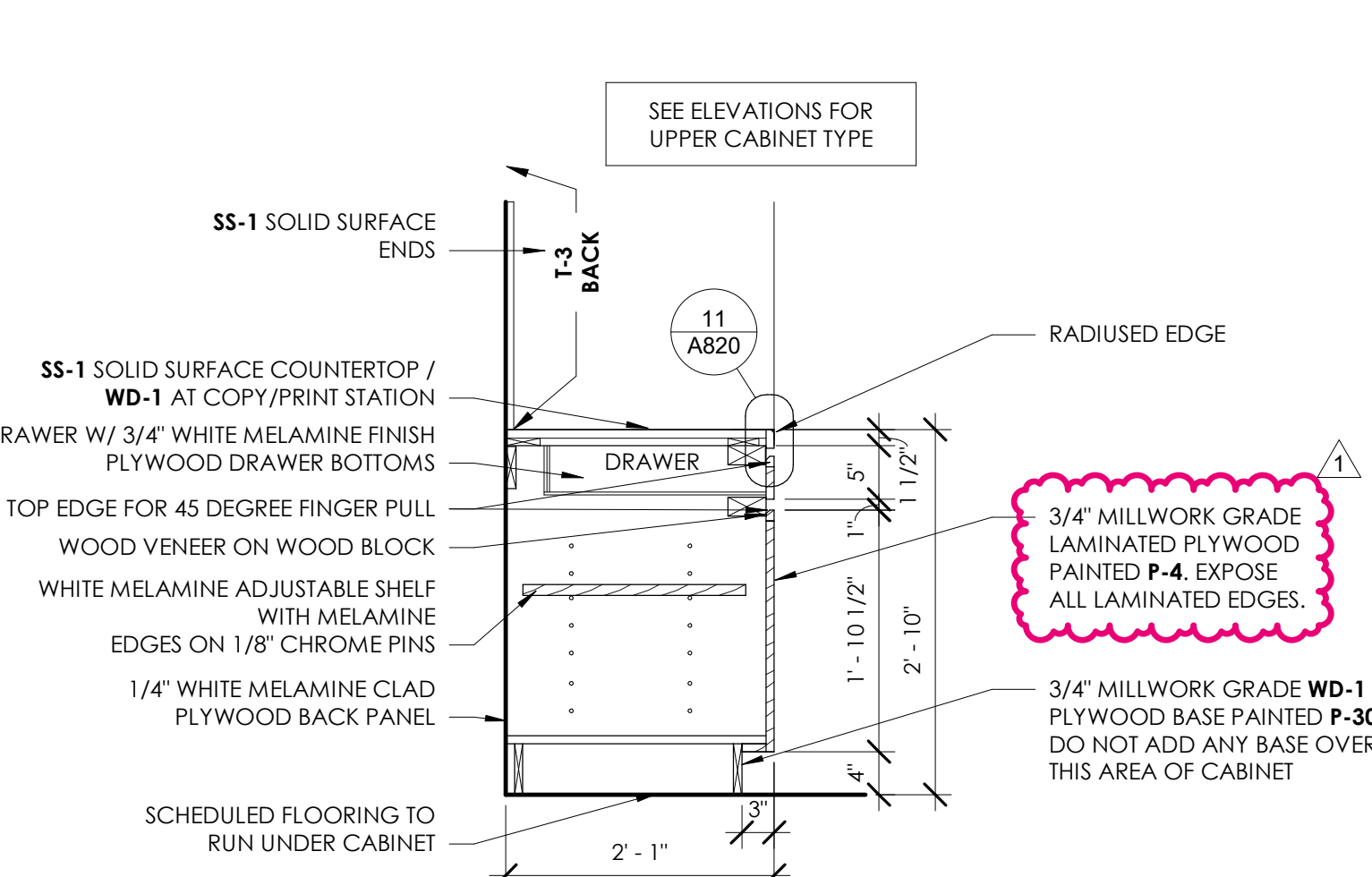
4 MILLWORK SECTION - (BC-2) BASE CABINET WITH DRAWER AND SHELF
3/4" = 1'-0"



16 MILLWORK SECTION - STORAGE CABINETS (ST-1)
3/4" = 1'-0"



8 MILLWORK SECTION - UPPER CABINET TYPE 1 (UC-1)
3/4" = 1'-0"



4 MILLWORK SECTION - (BC-2) BASE CABINET WITH DRAWER AND SHELF
3/4" = 1'-0"

4 MILLWORK SECTION - (BC-2) BASE CABINET WITH DRAWER AND SHELF
3/4" = 1'-0"