

FURNITURE MANUFACTURERS

REFER TO SPECIFICATION 125651 FOR FURNITURE MANUFACTURER.

FURNITURE GLIDES

FURNITURE GLIDE SLIDERS- GEAR PIPE (TE FLO) CHAIR MOVERS SLIDES FOR CARPET - FLOOR PROTECTOR (1\"/>

WOOD SPECIFICATION

REFER TO FINISH LEGEND 1110 FOR WOOD SPECIES AND FINISH.

SAMPLE APPROVALS

- PROVIDE ONE COMPLETE STOOL (1/A840 AND 2/A840) TO ARCHITECT FOR APPROVAL PRIOR TO MANUFACTURING REMAINING FURNITURE. THIS STOOL IS IN ADDITION TO THE SIXTEEN SHOWN IN DRAWINGS.
- PROVIDE ONE COMPLETE ADULT CHAIR (3/A840 AND 4/A840) TO ARCHITECT FOR APPROVAL PRIOR TO MANUFACTURING REMAINING FURNITURE. THIS CHAIR IS IN ADDITION TO THE NINE SHOWN IN DRAWINGS.
- PROVIDE ONE COMPLETE CHILDREN CHAIR (7/A840 AND 9/A840) TO ARCHITECT FOR APPROVAL PRIOR TO MANUFACTURING REMAINING FURNITURE. THIS CHAIR IS IN ADDITION TO THE TWELVE SHOWN IN DRAWINGS.
- PROVIDE ONE COMPLETE SPOT TABLE (1/A841 AND 2/A841) TO ARCHITECT FOR APPROVAL PRIOR TO MANUFACTURING REMAINING FURNITURE. THIS SPOT TABLE IS IN ADDITION TO THE ONE SHOWN IN DRAWINGS.
- PROVIDE ONE COMPLETE ARROW-ROCKER CHAIR (1/A842 AND 2/A842) TO ARCHITECT FOR APPROVAL PRIOR TO MANUFACTURING REMAINING FURNITURE. THIS CHAIR IS IN ADDITION TO THE TWO SHOWN IN DRAWINGS.
- PROVIDE ONE COMPLETE TEEN TAG CHAIR (3/A842 AND 4/A842) TO ARCHITECT FOR APPROVAL PRIOR TO MANUFACTURING REMAINING FURNITURE. THIS CHAIR IS IN ADDITION TO THE TWO SHOWN IN DRAWINGS.
- PROVIDE ONE COMPLETE CUSTOM LUMINAIRE (5/A843, 6/A843 AND 7/A843) TO ARCHITECT FOR APPROVAL PRIOR TO MANUFACTURING REMAINING FURNITURE. THIS CUSTOM LUMINAIRE IS IN ADDITION TO THE THIRTY SHOWN IN DRAWINGS.

ARCHITECT

Cas Architecture
183 N Perry St
Lawrenceville, GA
30046
404 806 0556
www.casarc.com

CONSULTANT

SEAL

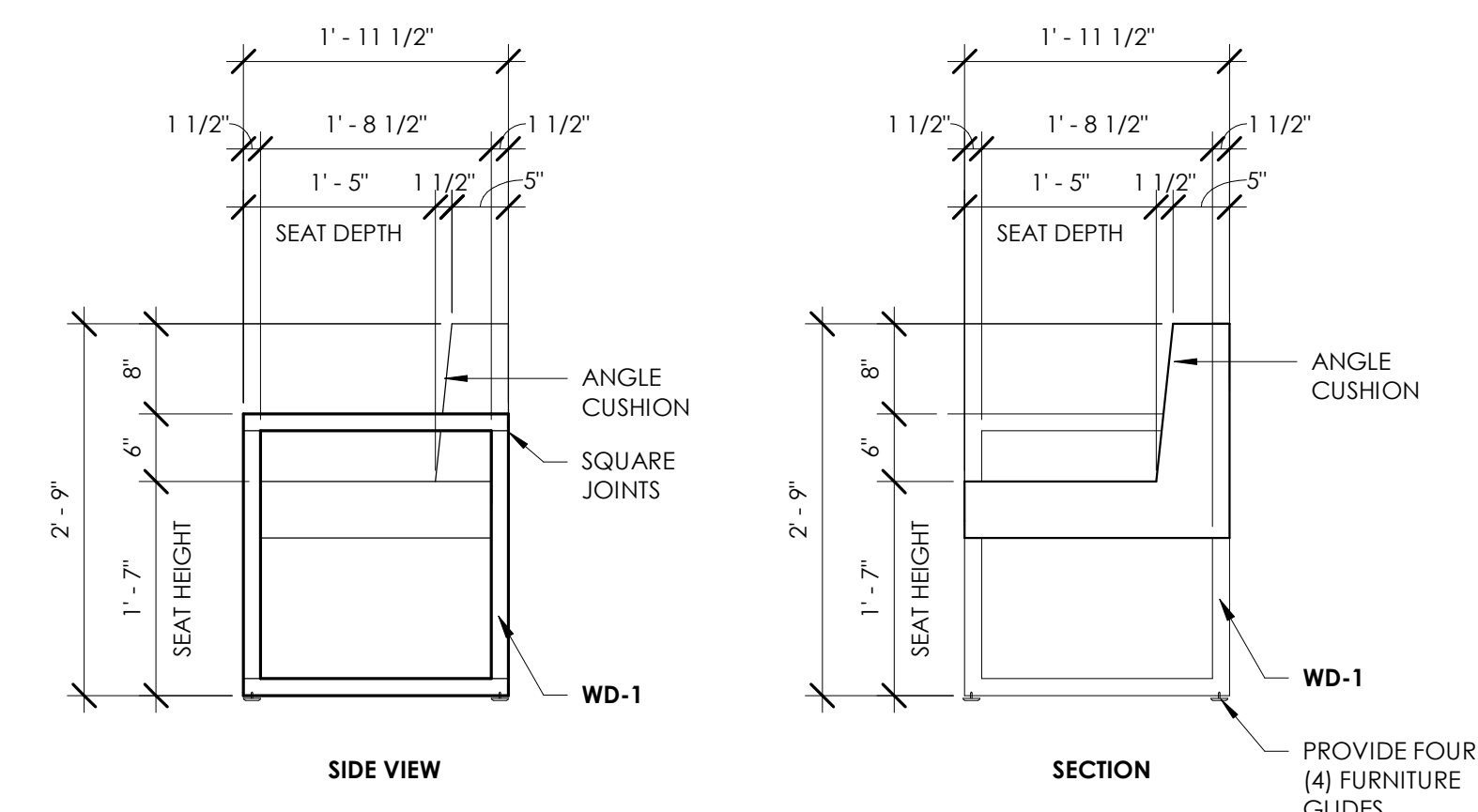
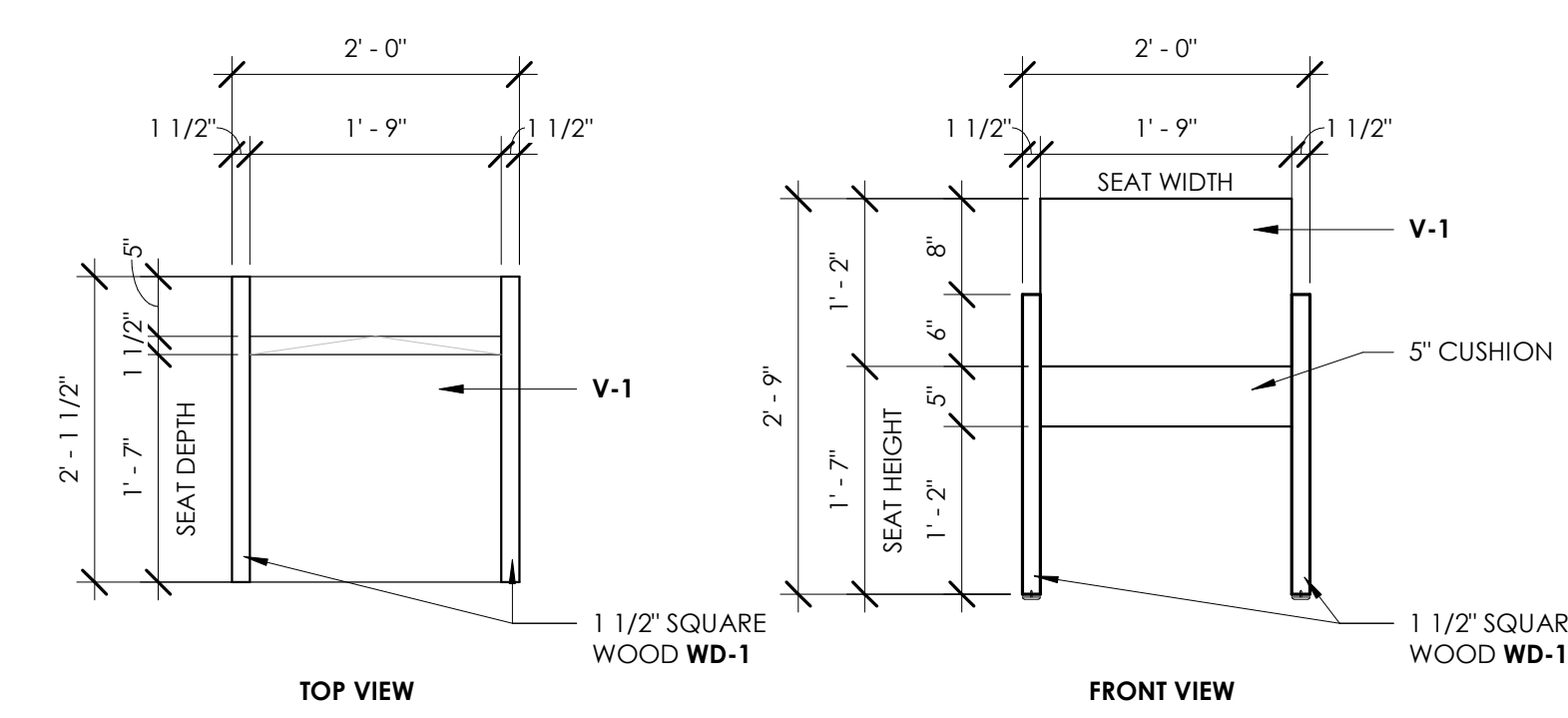
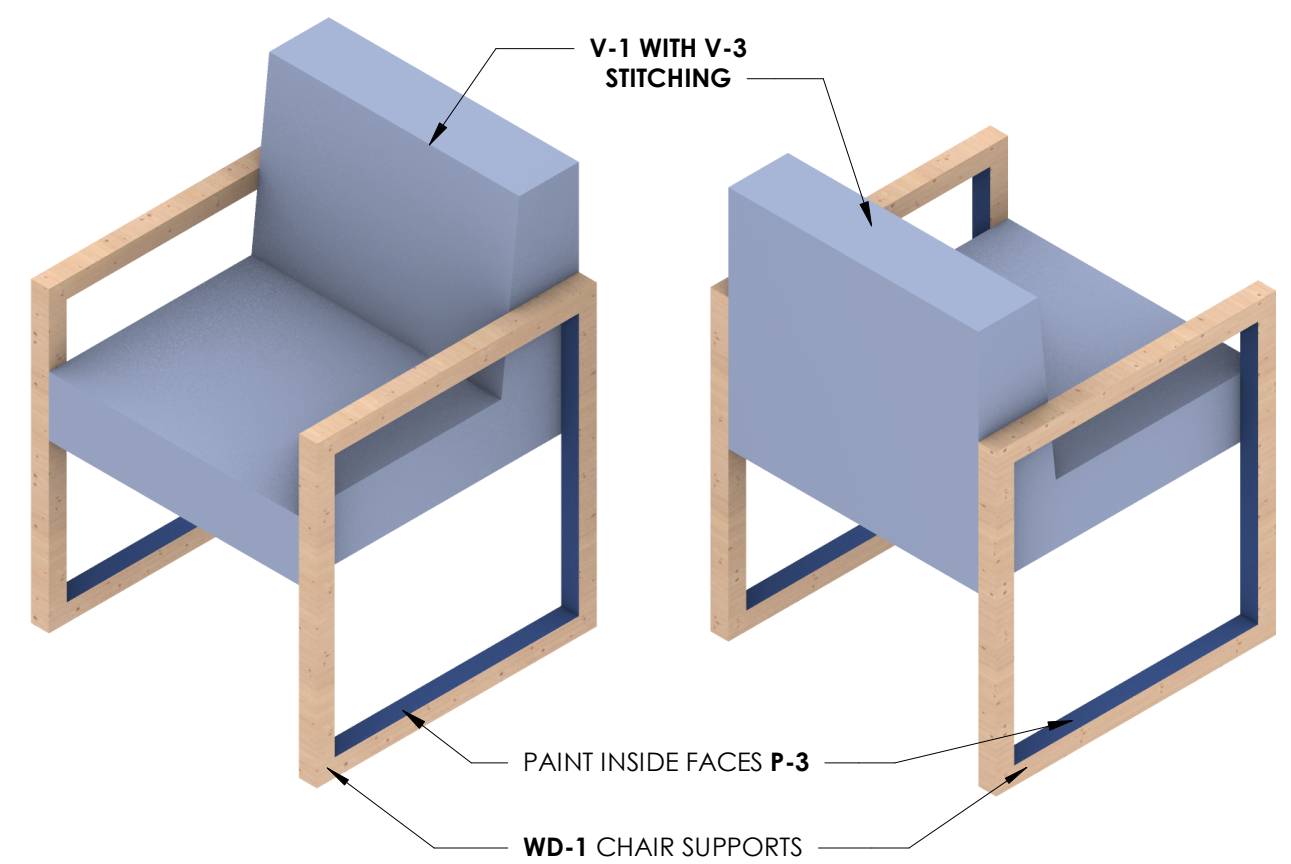
IF SEALED, DO NOT COPY

PROJECT

1 ADULT STOOL AXONOMETRIC2
A840

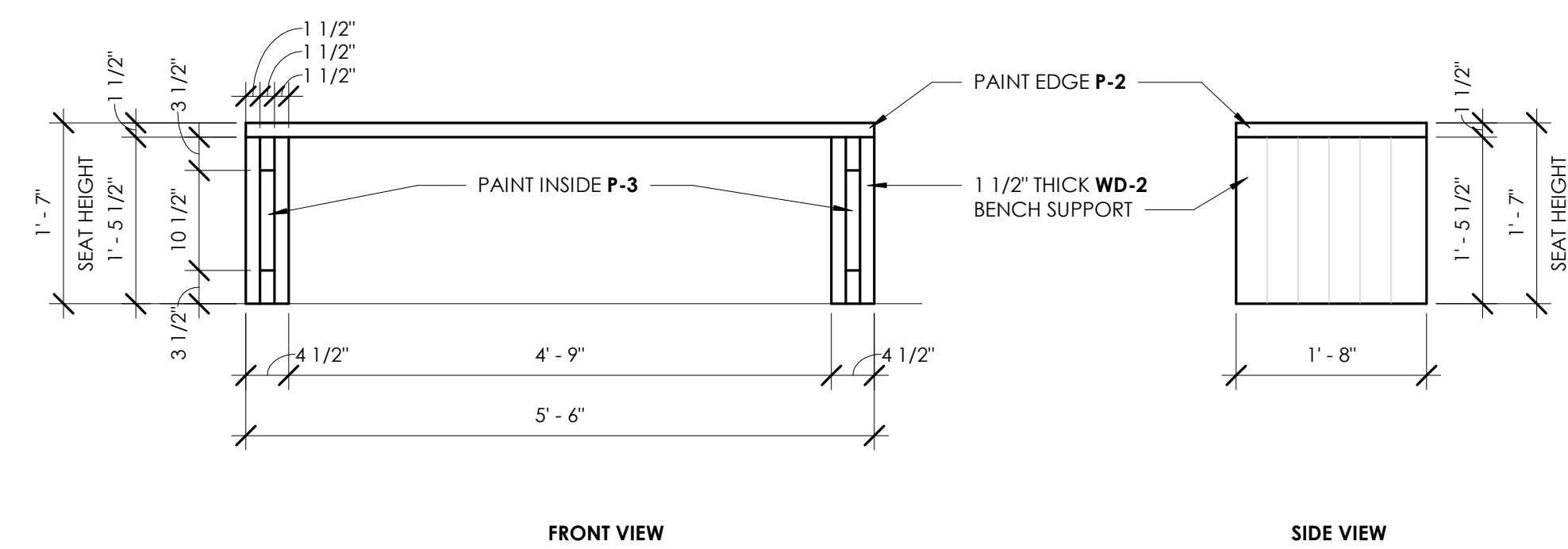
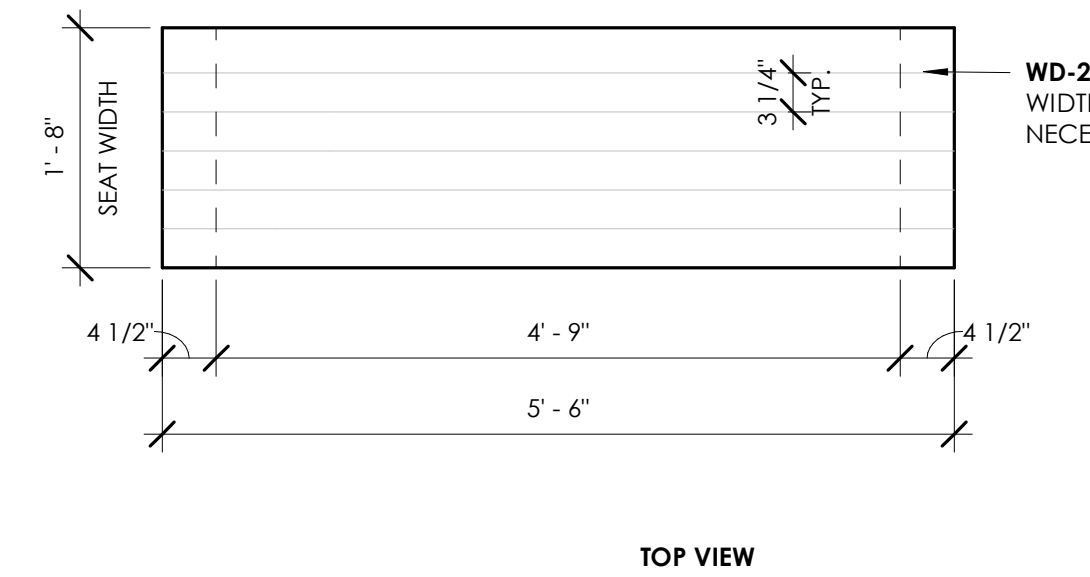
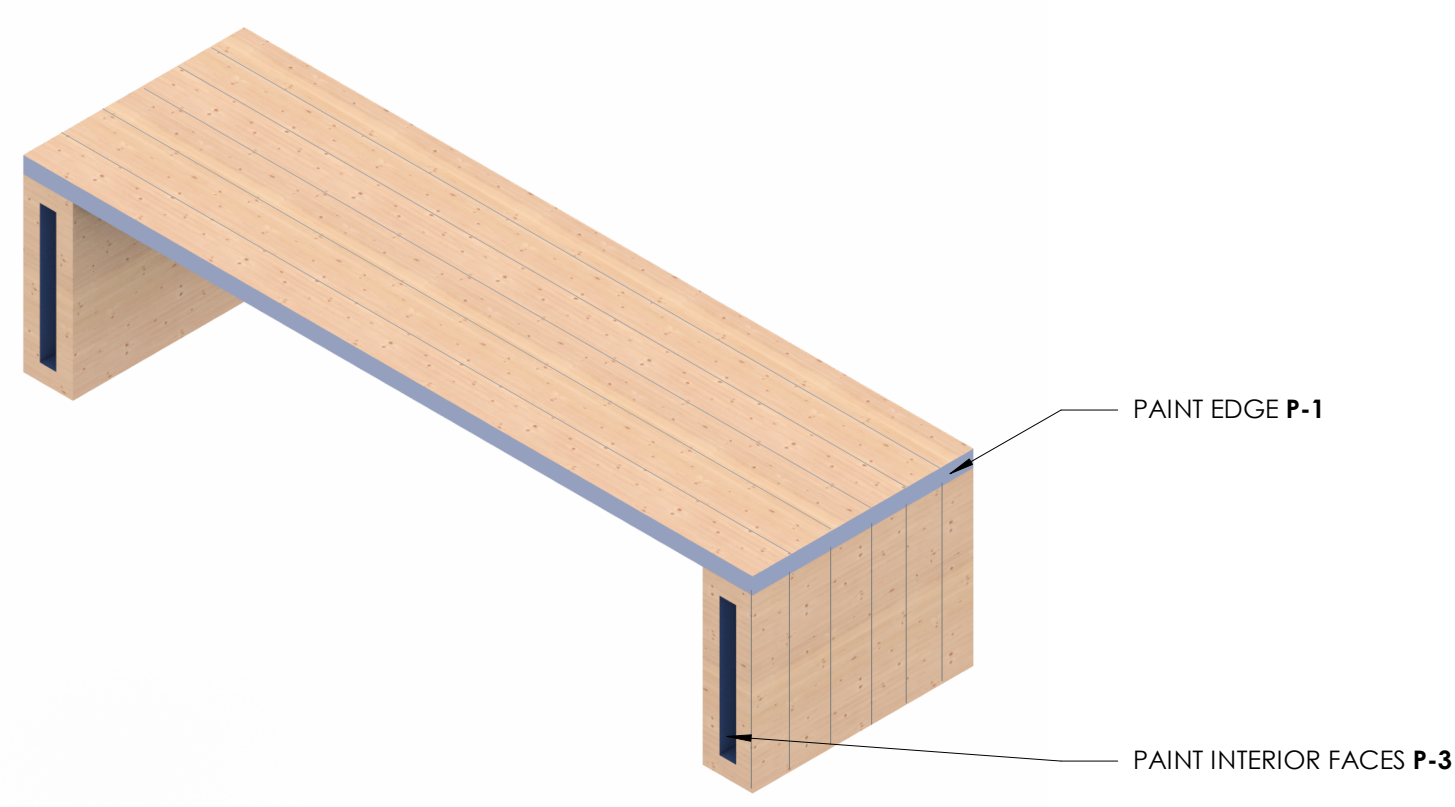
2 ADULT STOOL (CONTRACTOR TO PROVIDE QUANTITY OF SIXTEEN PLUS ONE SAMPLE)
A840 1\"/>

9 FURNITURE GLIDE
A840 12\"/>



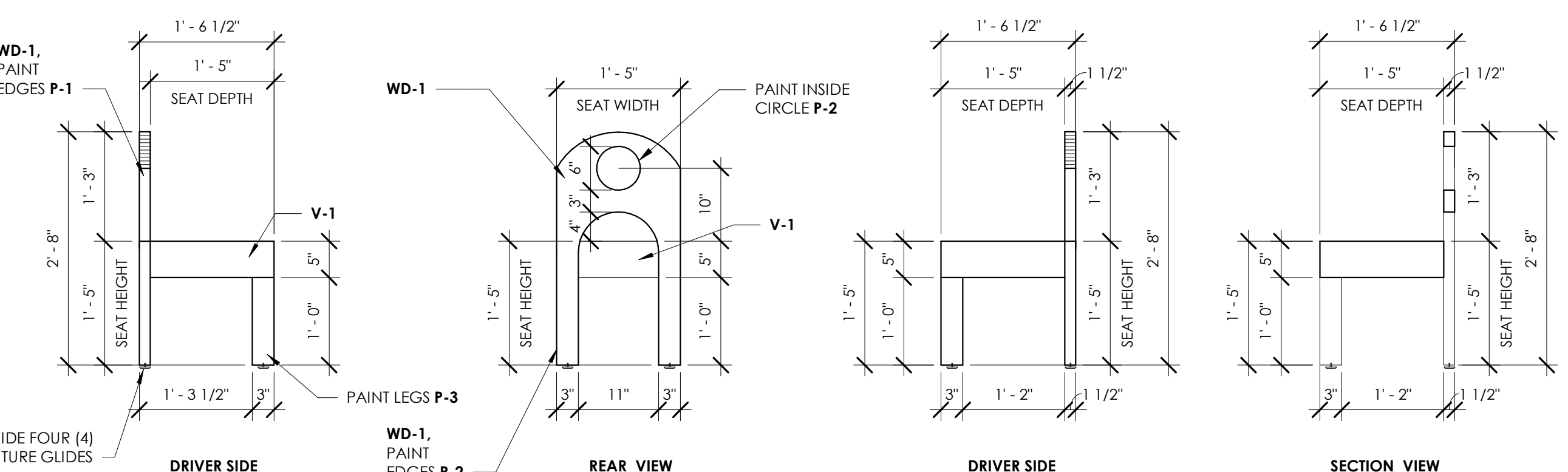
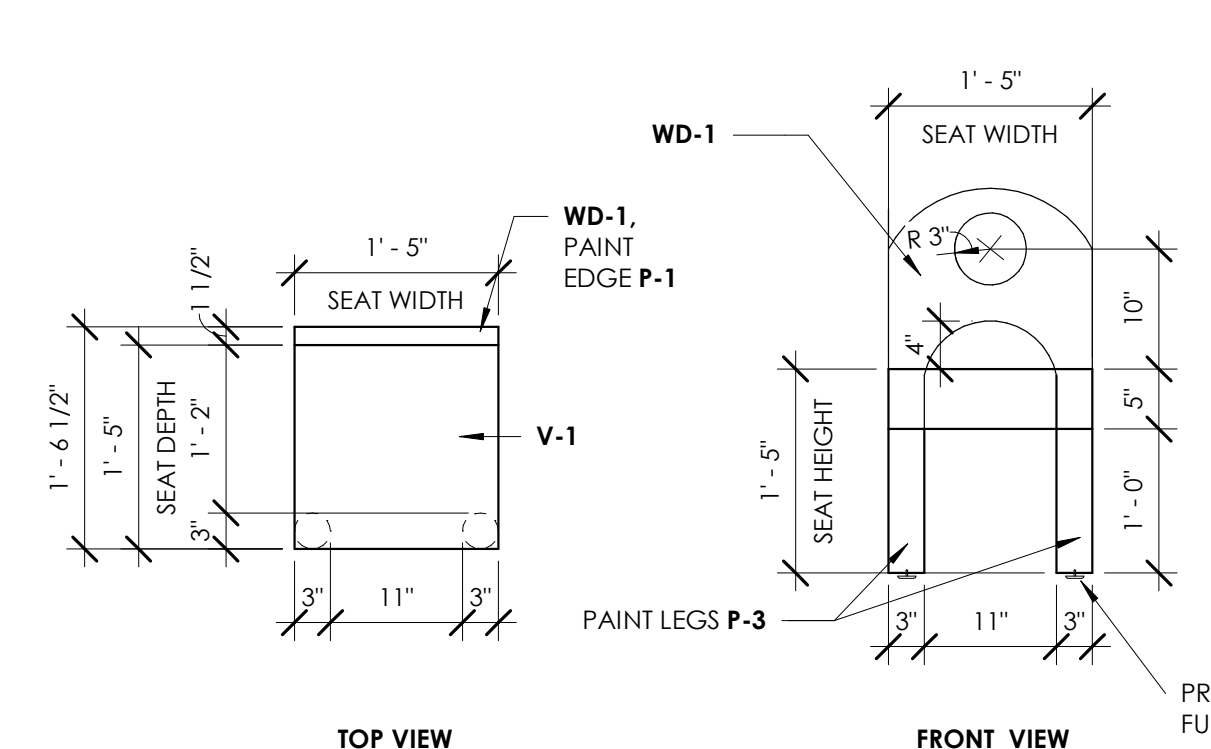
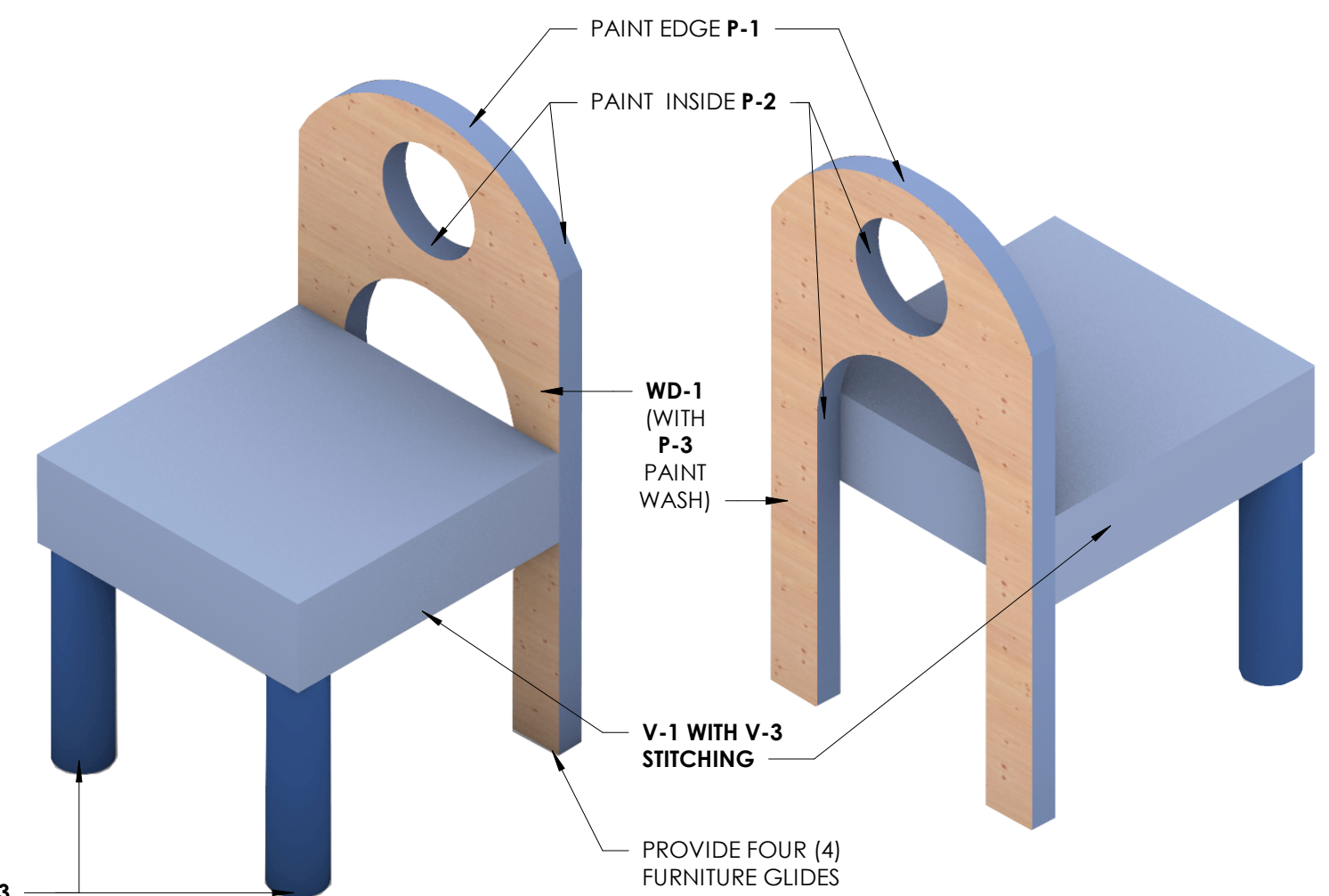
3 ADULT CHAIR AXONOMETRIC
A840

4 ADULT CHAIR (CONTRACTOR TO PROVIDE QUANTITY OF NINE PLUS ONE SAMPLE)
A840 3/4\"/>



5 ADULT BENCH AXONOMETRIC
A840 3/4\"/>

6 ADULT BENCH (CONTRACTOR TO PROVIDE QUANTITY OF ONE)
A840 3/4\"/>



7 CHILDREN'S SYMBOL CHAIR AXONOMETRIC
A840

8 CHILDREN'S SYMBOL CHAIR (CONTRACTOR TO PROVIDE QUANTITY OF TWELVE PLUS ONE SAMPLE)
A840 3/4\"/>

COLLINS P. LEE MEMORIAL LIBRARY
237 HARRISBURG ROAD SW, MILLEDGEVILLE, GA 31061

COPYRIGHT © 2024 CAS ARCHITECTURE, P.C. ALL RIGHTS RESERVED. THIS DOCUMENT AND ANY REPRODUCTIONS IN WHOLE OR IN PART, ARE INSTRUMENTS OF SERVICE AND ARE THE SOLE PROPERTY AND COPYRIGHT OF CAS ARCHITECTURE, P.C. AND MAY NOT BE REPRODUCED, COPIED, OR TRANSMITTED IN ANY MANNER WITHOUT WRITTEN PERMISSION FROM CAS ARCHITECTURE, P.C. THESE DOCUMENTS HAVE BEEN PREPARED SPECIFICALLY FOR THIS PROJECT. THEY ARE NOT SUITABLE FOR USE ON OTHER PROJECTS OR IN OTHER LOCATIONS.

THIS DOCUMENT WAS CREATED ELECTRONICALLY. THIS MEDIA SHOULD NOT BE CONSIDERED A CERTIFIED DOCUMENT UNLESS IT HAS BEEN PROPERLY SEALED AND CIRCULARLY SIGNED BY A REGISTERED ARCHITECT OF CAS ARCHITECTURE, P.C.

THESE PLANS ARE COMPLEMENTARY. THEREFORE THE CONTRACTOR SHALL SEE THE ARCHITECTURAL, STRUCTURAL, MECHANICAL, PLUMBING, AND ELECTRICAL PLANS AND SPECIFICATIONS, WHEN REQUIRED BY ANY ONE SHALL BE BINDING AS REQUIRED BY ALL. THE INTENTION OF THE DOCUMENTS IS TO INCLUDE ALL LABOR, MATERIALS, EQUIPMENT AND OTHER DEVICES NECESSARY FOR THE PROPER EXECUTION AND COMPLETION OF THE WORK. THE CONTRACTOR SHALL BE RESPONSIBLE FOR THE COORDINATION OF THE WORK OF ALL TRADES.

NO.	DATE	ISSUANCE / REVISIONS

REVISIONS TO BE MADE AND BY:

SHEET TITLE
FURNITURE / MILLWORK DETAILS

SHEET NUMBER
A840

PROJECT DATE DRAWN
25114 2026/03/20 CAS

FILE
25114_LEE MEMORIAL LIBRARY RV124