

COLLINS P. LEE MEMORIAL LIBRARY
237 HARRISBURG ROAD SW, MILLEDGEVILLE, GA 31061

COPYRIGHT © 2024 CAS ARCHITECTURE, P.C. ALL RIGHTS RESERVED. THIS DOCUMENT AND ANY REPRODUCTION, IN WHOLE OR IN PART, ARE INSTRUMENTS OF SERVICE AND ARE THE SOLE PROPERTY AND COPYRIGHT OF CAS ARCHITECTURE, P.C. AND MAY NOT BE REPRODUCED, COPIED, PUBLISHED, USED OR CONVEYED IN ANY MANNER WITHOUT WRITTEN PERMISSION FROM CAS ARCHITECTURE, P.C. THESE DOCUMENTS HAVE BEEN PREPARED SPECIFICALLY FOR THIS PROJECT. THEY ARE NOT SUITABLE FOR USE ON OTHER PROJECTS OR IN OTHER LOCATIONS.

THIS DOCUMENT WAS CREATED ELECTRONICALLY. THIS MEDIA SHOULD NOT BE CONSIDERED A CERTIFIED DOCUMENT UNLESS IT HAS BEEN PROPERLY SEALED AND ORIGINALLY SIGNED BY A REGISTERED ARCHITECT OF CAS ARCHITECTURE, P.C.

THESE PLANS ARE COMPLEMENTARY. THEREFORE THE CONTRACTOR SHALL SEE THE ARCHITECTURAL, STRUCTURAL, MECHANICAL, PLUMBING, AND ELECTRICAL PLANS AND SPECIFICATIONS. WHEN CONFLICTS OR ANY OTHER SHALL BE ENCOUNTERED BY ALL THE INTENTION OF THE CONTRACTOR SHALL BE TO FOLLOW ALL ARCHITECTURAL, MECHANICAL, PLUMBING, AND ELECTRICAL PLANS AND SPECIFICATIONS. THE CONTRACTOR SHALL BE RESPONSIBLE FOR THE COORDINATION OF THE WORK OF ALL TRADES.

NO.	DATE	ISSUANCE / REVISIONS

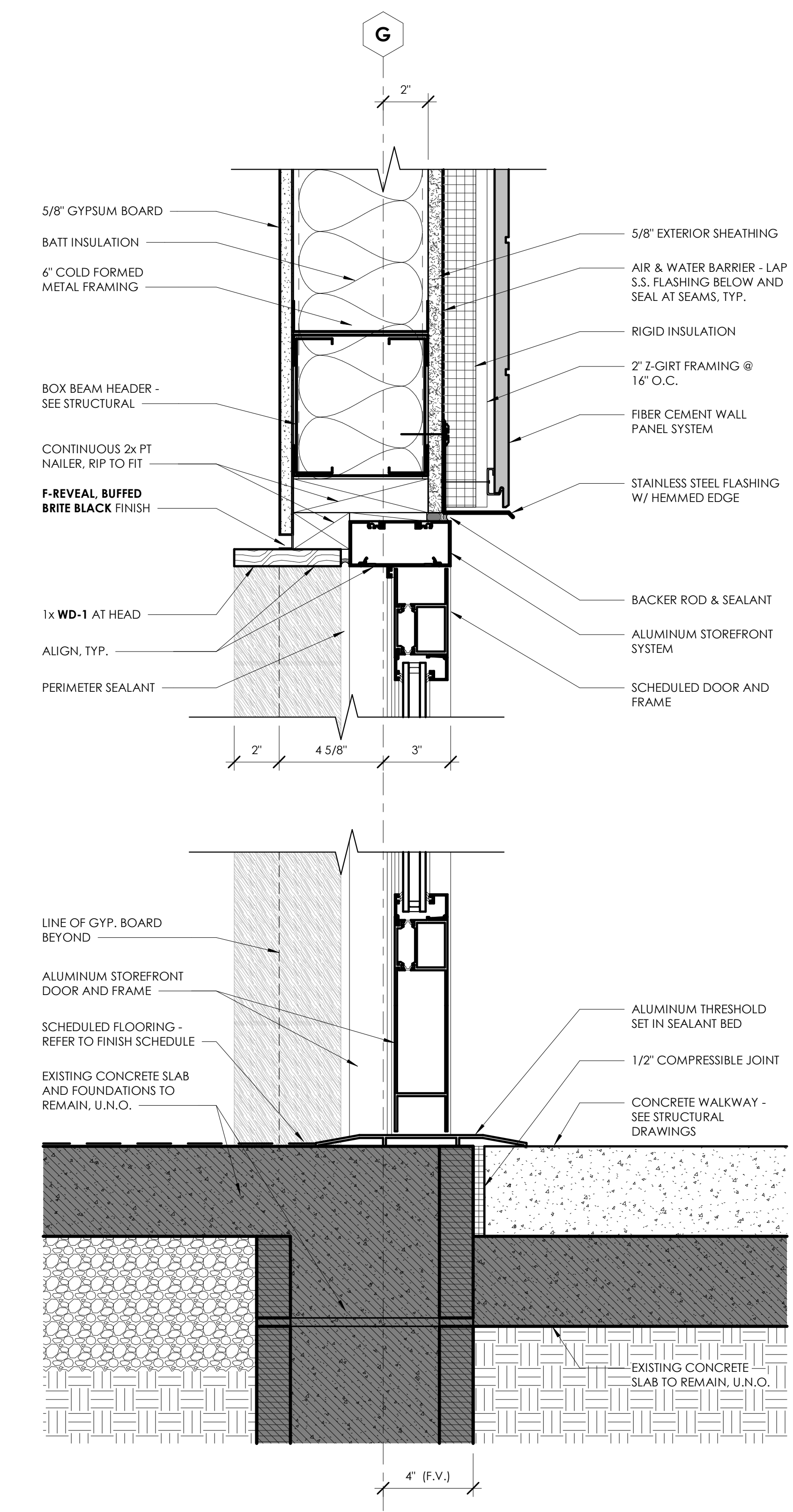
SHEET TITLE
EXTERIOR DOOR AND WINDOW
DETAILS

SHEET NUMBER

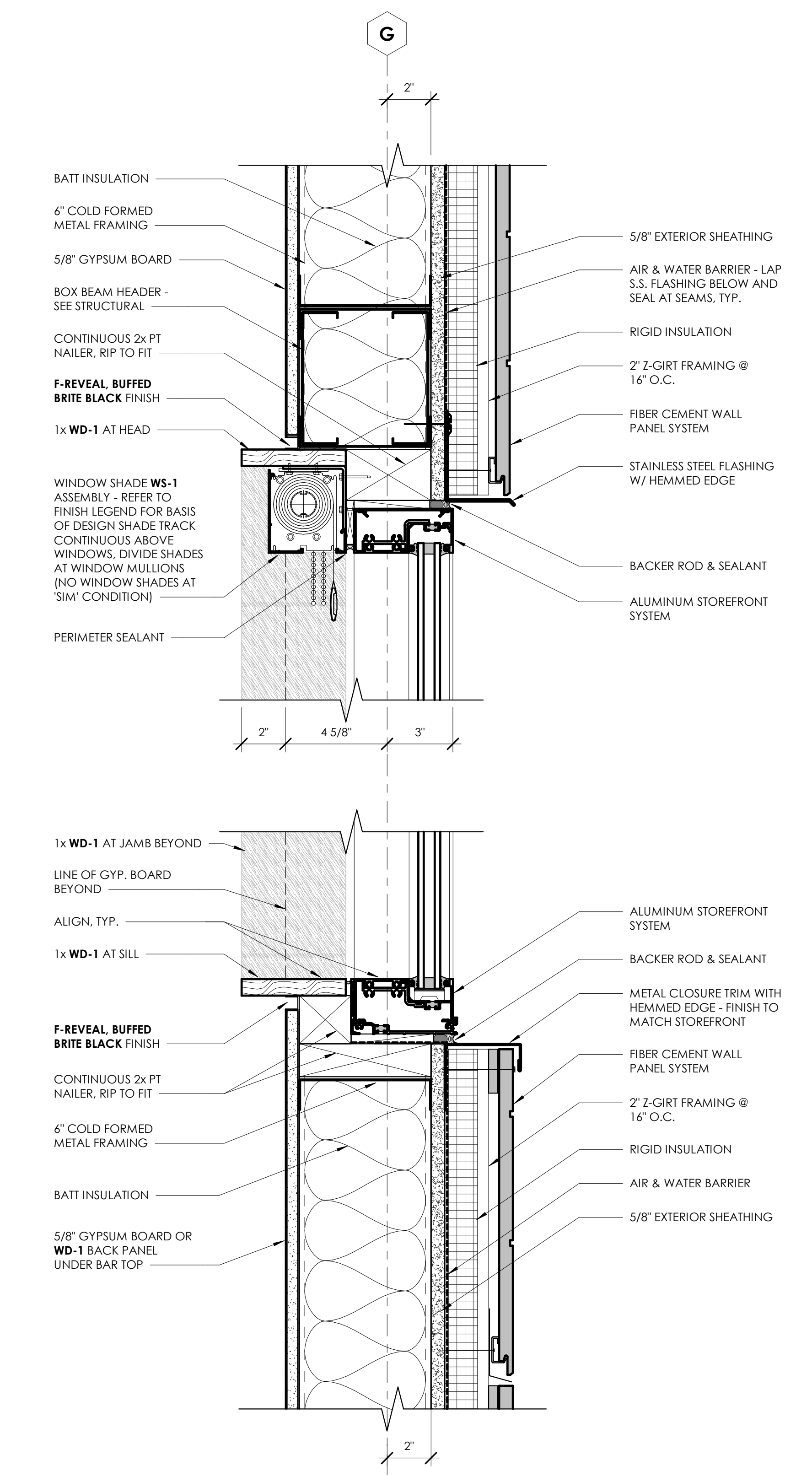
A911

PROJECT DATE DRAWN
25114 2026/03/20 CAS

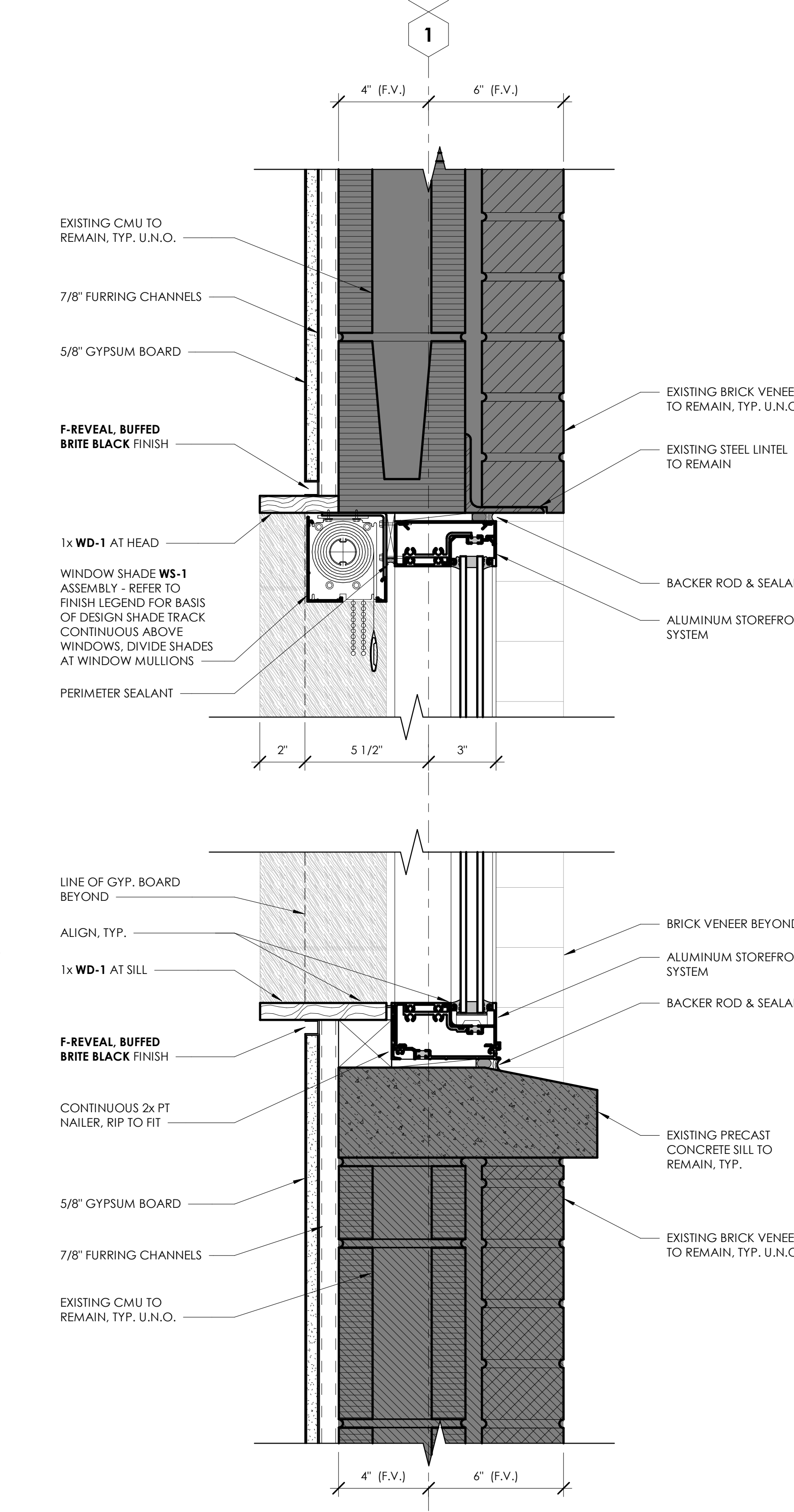
FILE 25114.LEE MEMORIAL LIBRARY.FVT24



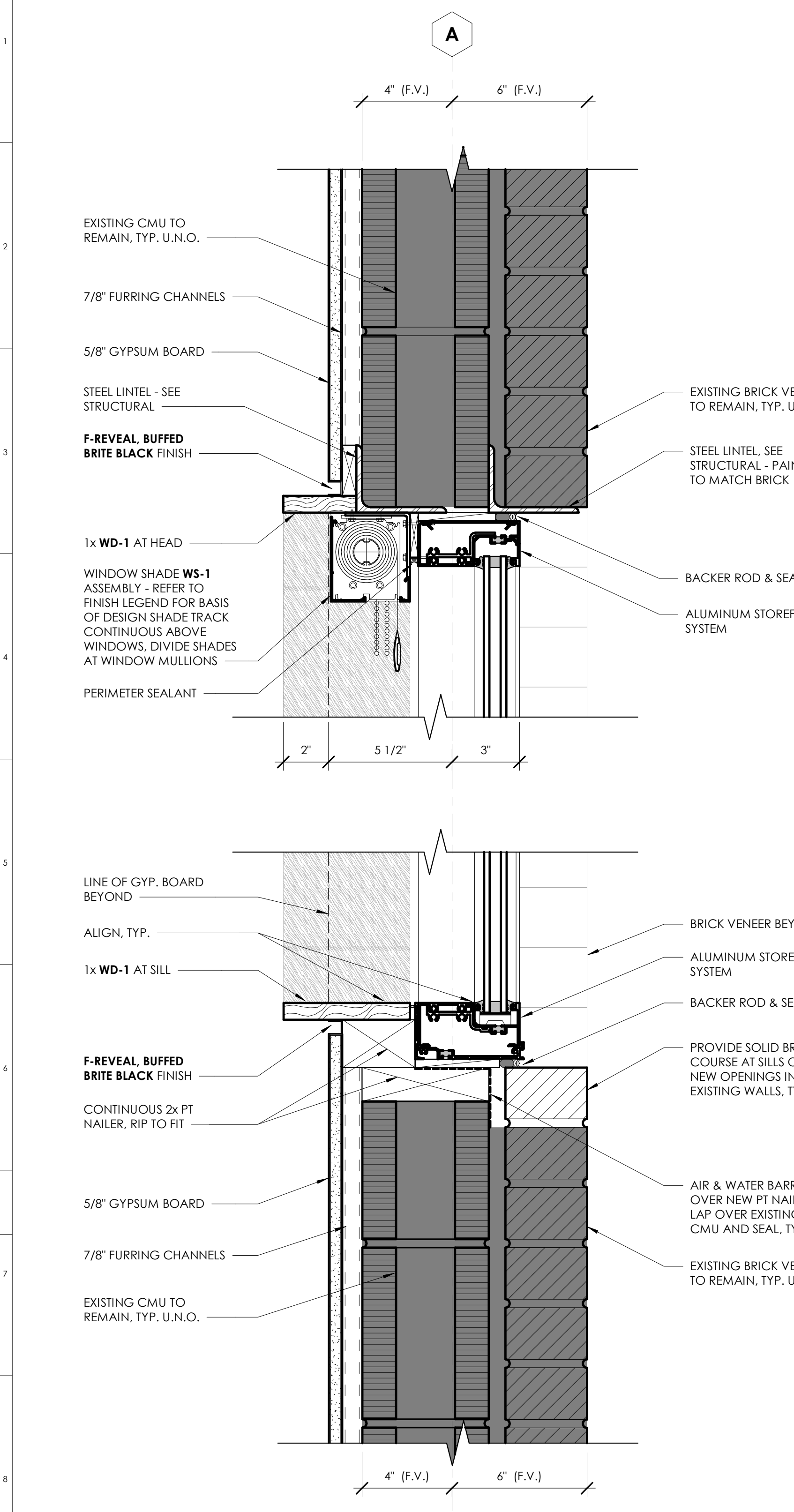
4 EXTERIOR STOREFRONT DOOR - SILL & HEAD
A911 3" = 1'-0"



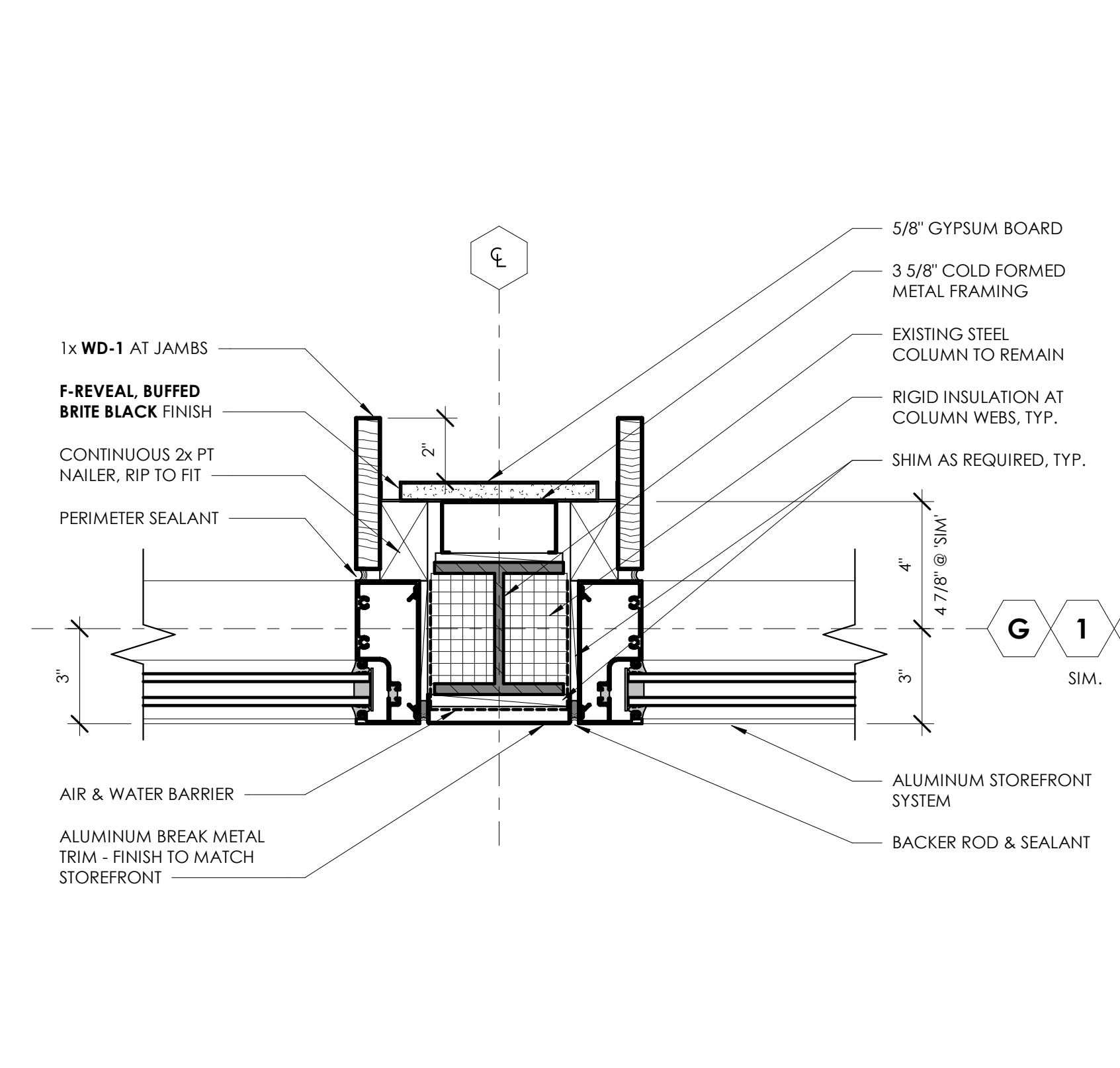
3 EXTERIOR STOREFRONT - SILL & HEAD (FIBER CEMENT)
A911 3" = 1'-0"



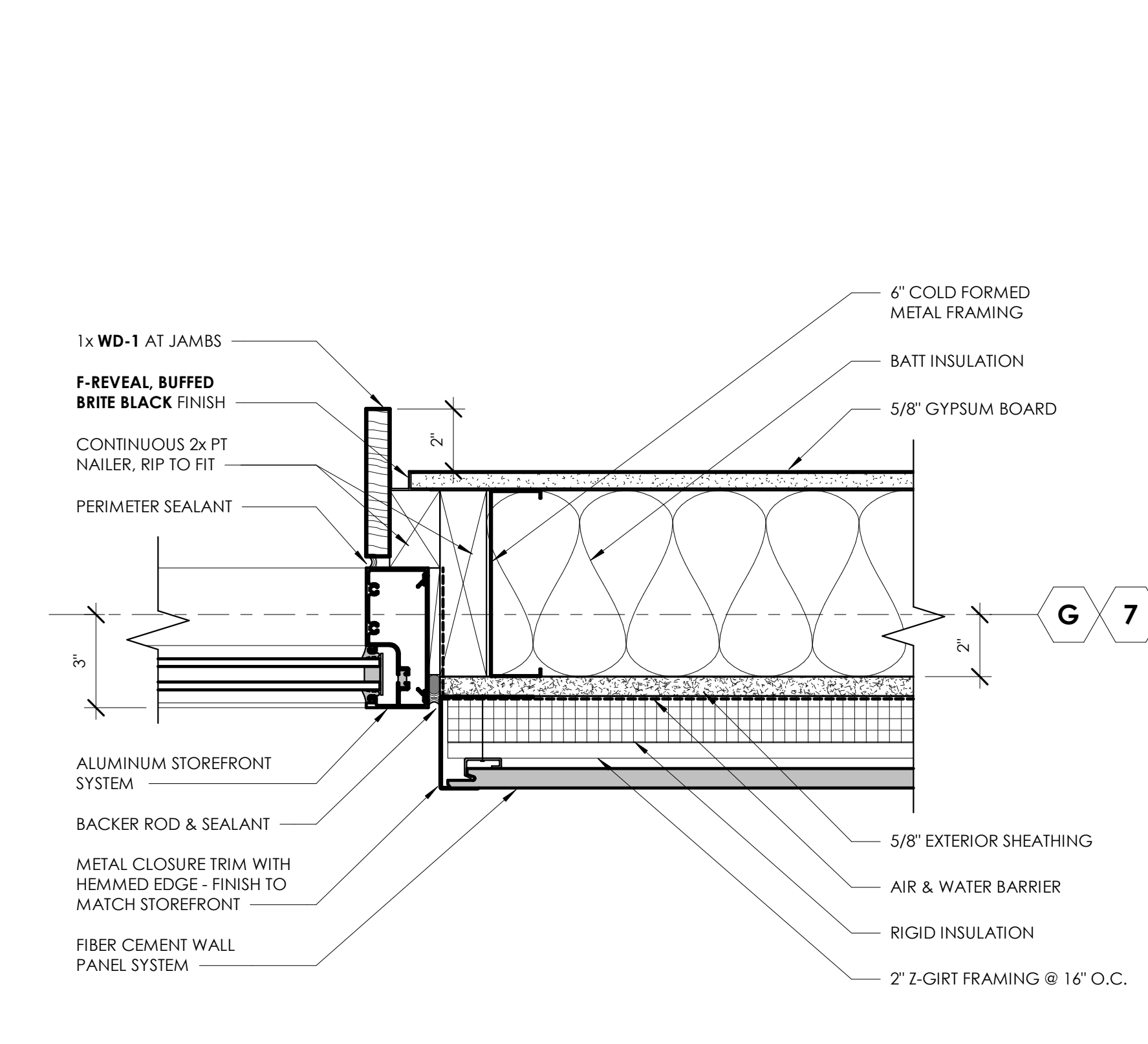
2 EXTERIOR STOREFRONT - SILL & HEAD (BRICK)
A911 3" = 1'-0"



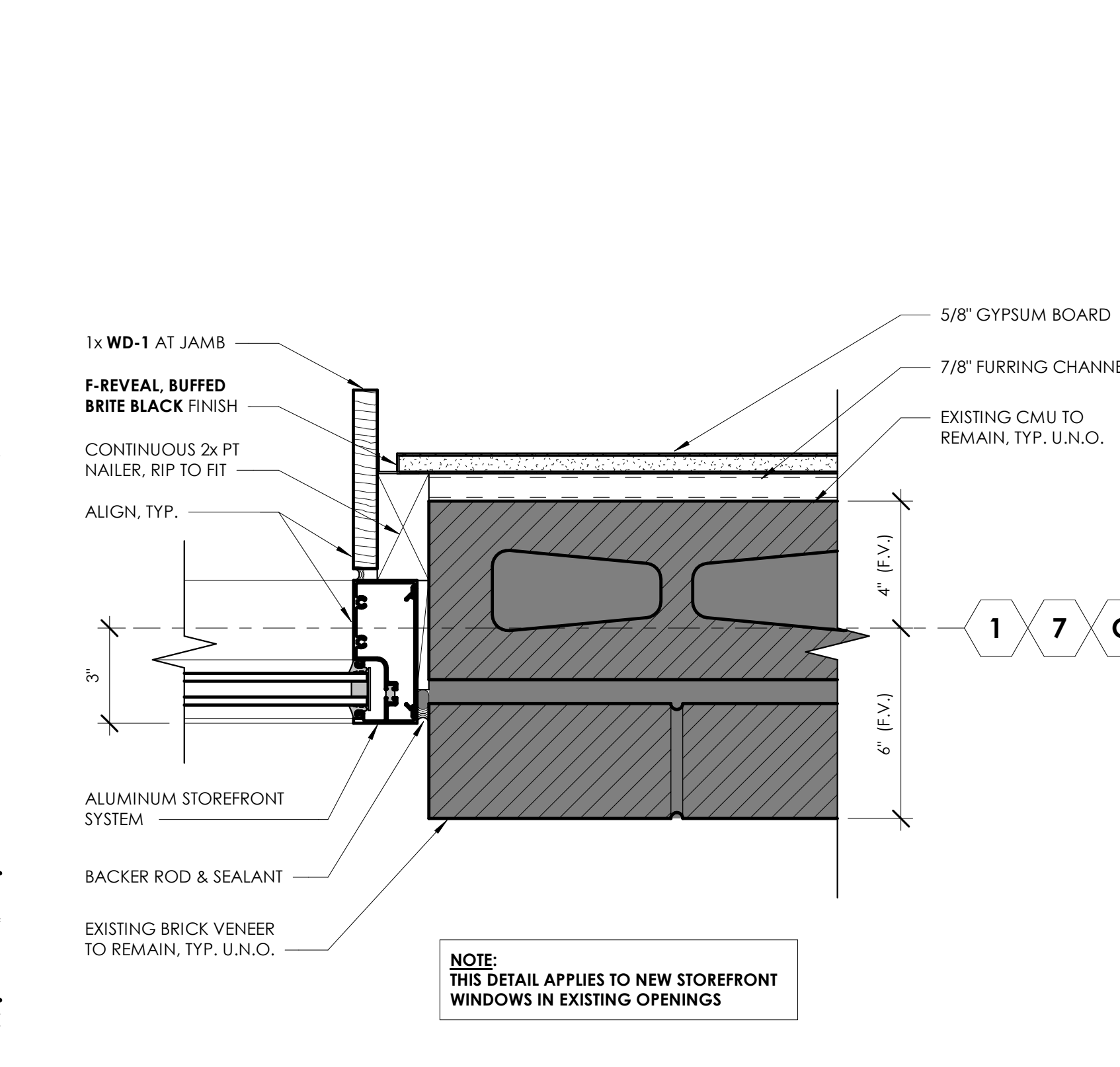
1 EXTERIOR STOREFRONT - SILL & HEAD (NEW OPENINGS)
A911 3" = 1'-0"



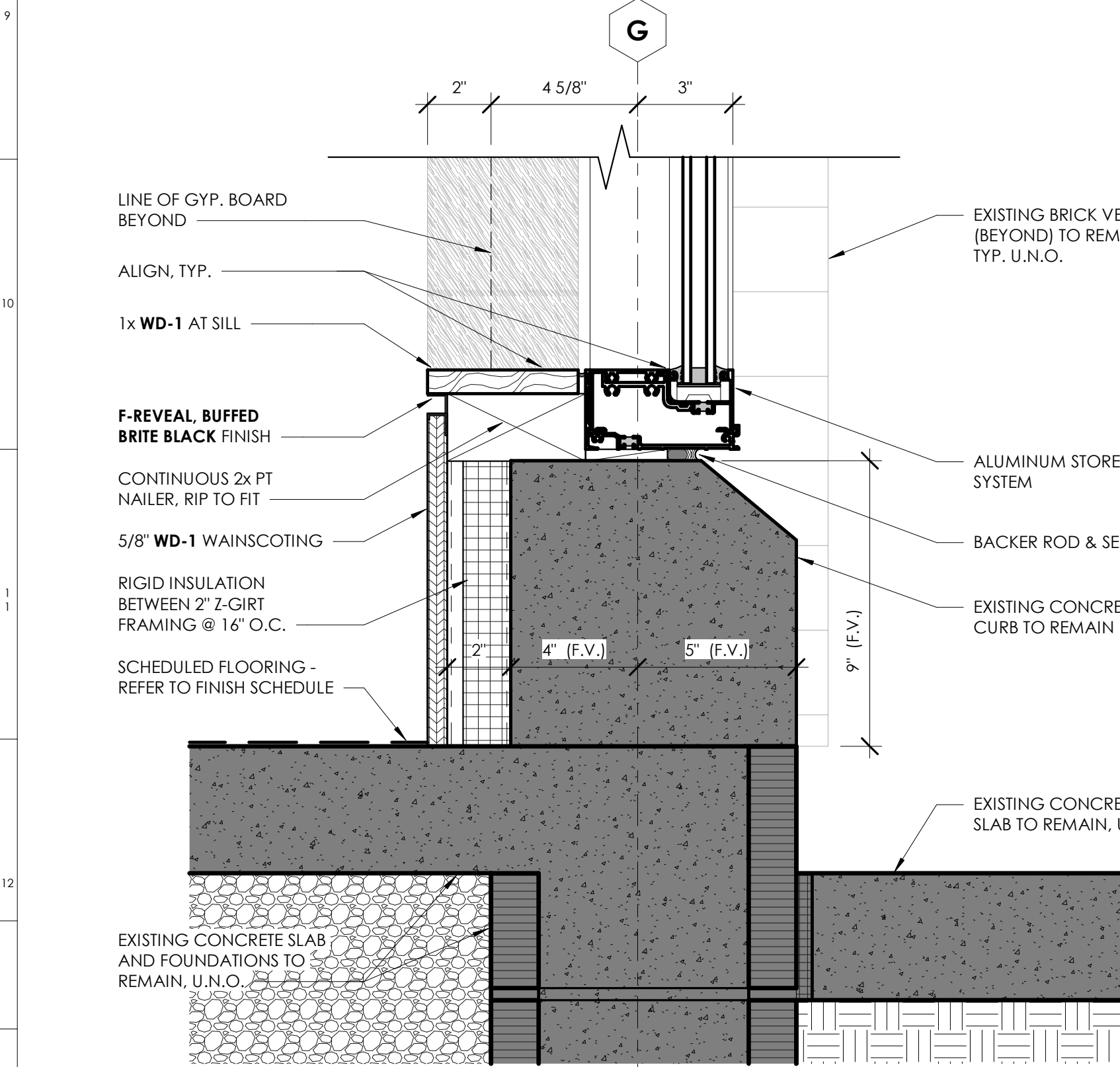
8 EXTERIOR STOREFRONT - JAMB (COLUMN WRAP)
A911 3" = 1'-0"



7 EXTERIOR STOREFRONT - JAMB (FIBER CEMENT)
A911 3" = 1'-0"



6 EXTERIOR STOREFRONT - JAMB (BRICK)
A911 3" = 1'-0"



5 EXTERIOR STOREFRONT - SILL (EXISTING CURB)
A911 3" = 1'-0"