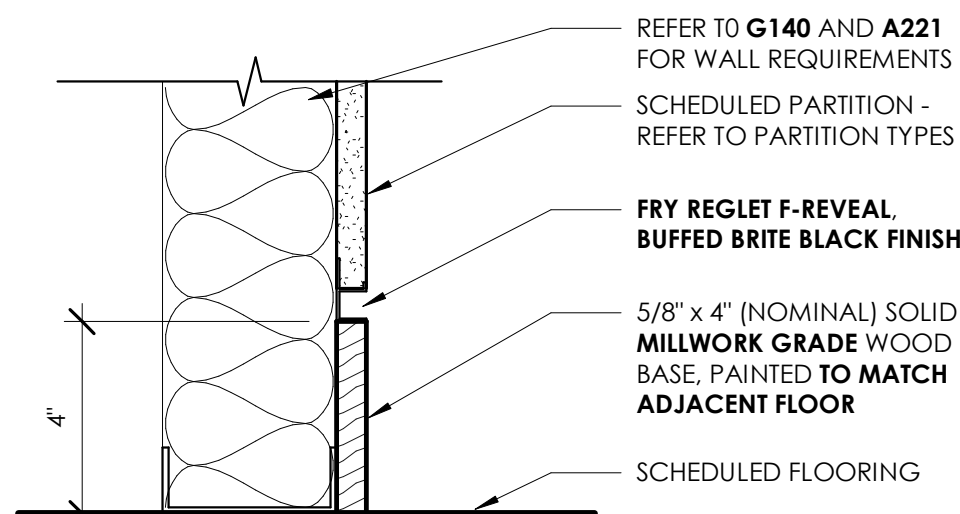
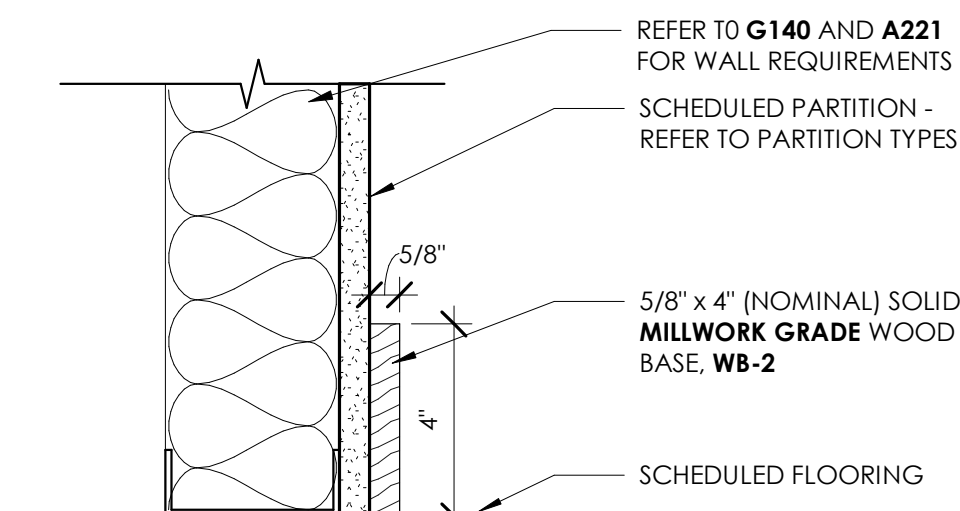


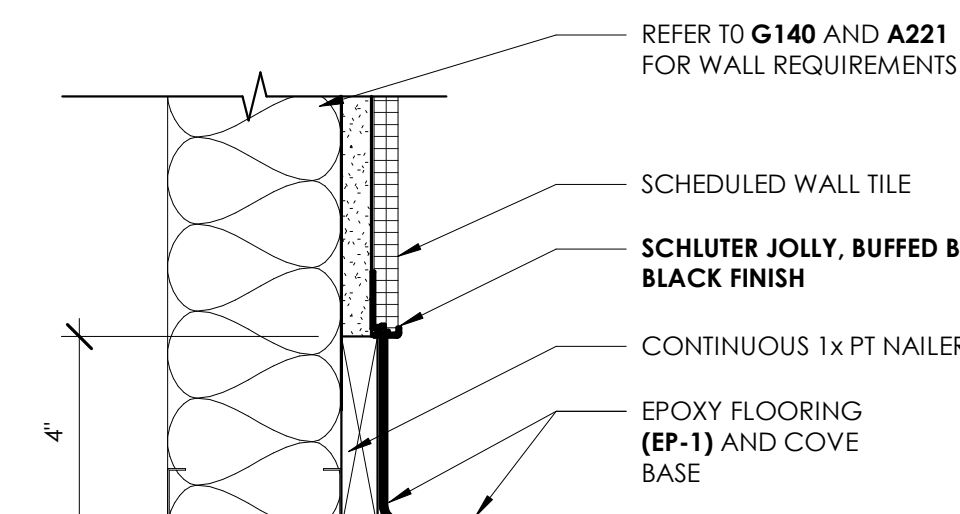
TYPICAL BASE DETAILS



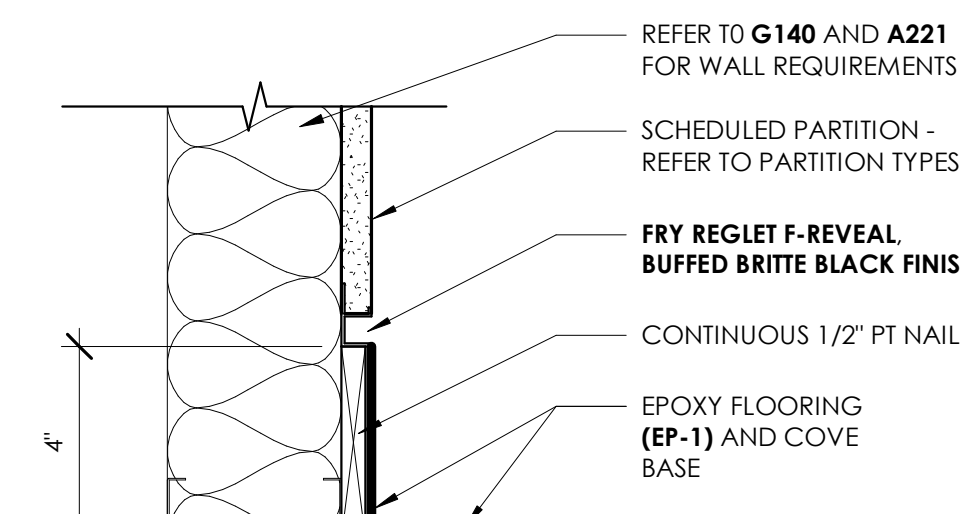
WB1
1110
WOOD BASE (WB-1) DETAIL
3" = 1'-0"



WB2
1110
WOOD BASE (WB-2) DETAIL
3" = 1'-0"

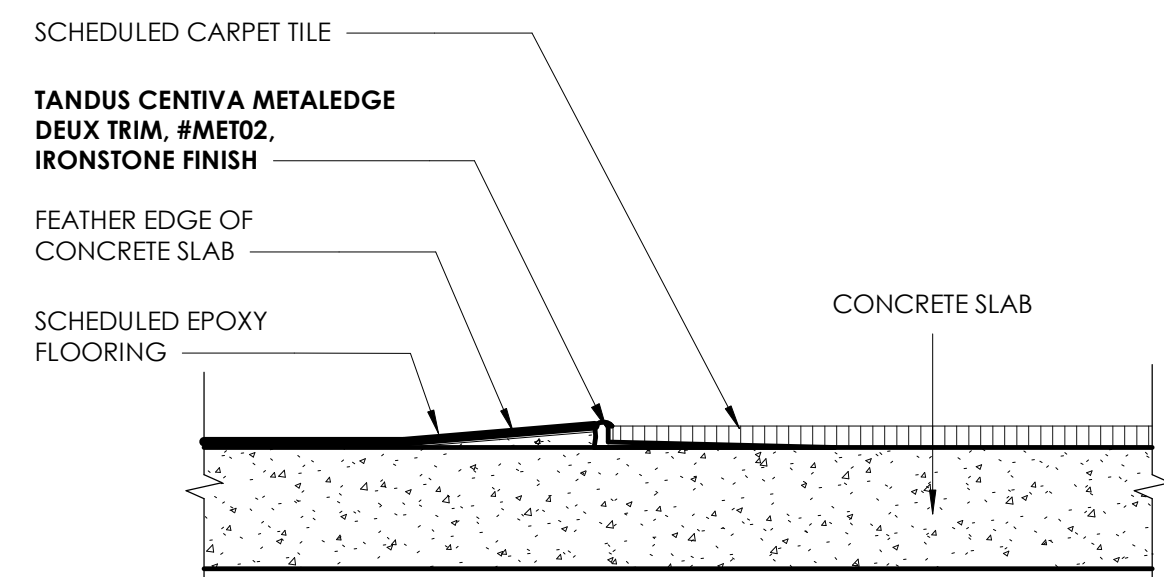


EB1
1110
EPOXY FLOOR TO WALL TILE DETAIL (EB-1) RESTROOMS
3" = 1'-0"



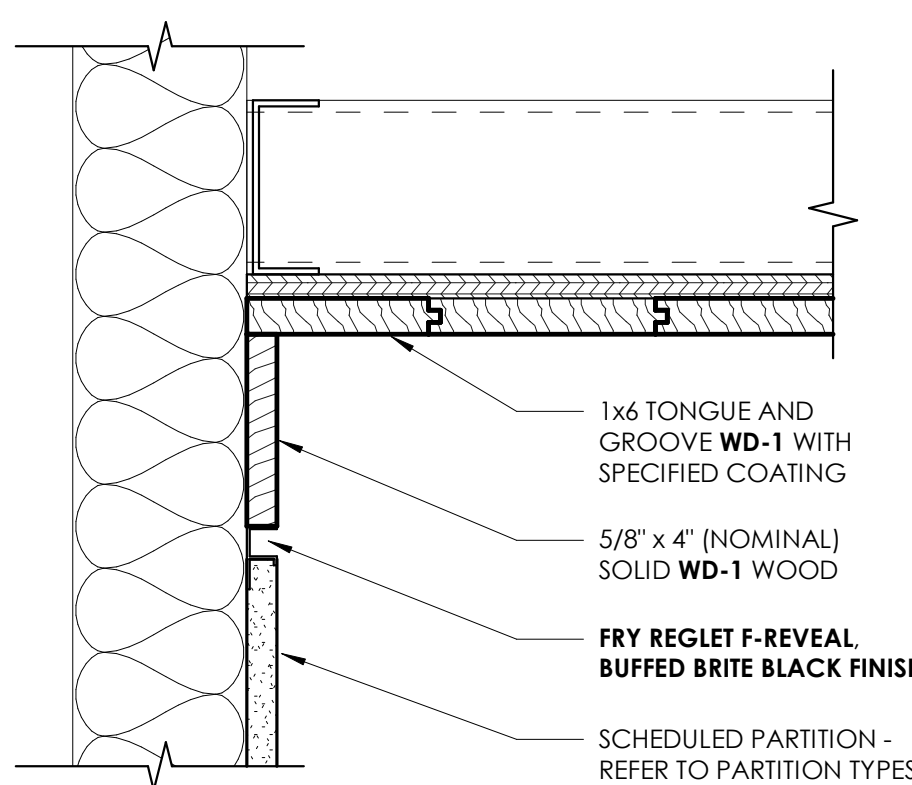
EB2
1110
EPOXY FLOOR TO GYP. BOARD DETAIL (EB-2) PROGRAM
3" = 1'-0"

TYPICAL FLOOR TRANSITION DETAILS



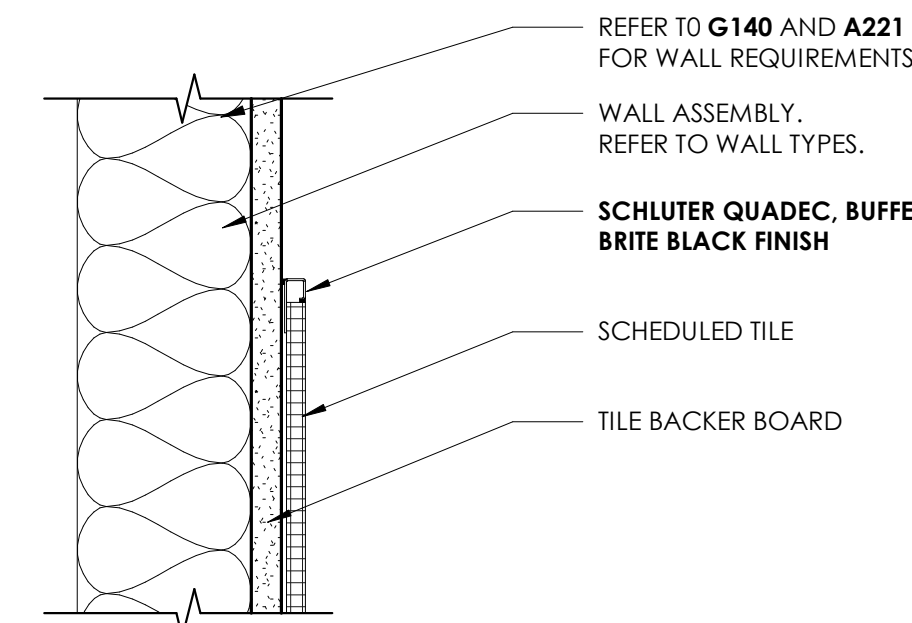
EC
1110
TYPICAL EPOXY TO CARPET (EPY/CPT)
6" = 1'-0"

TYPICAL CEILING TRANSITION DETAILS



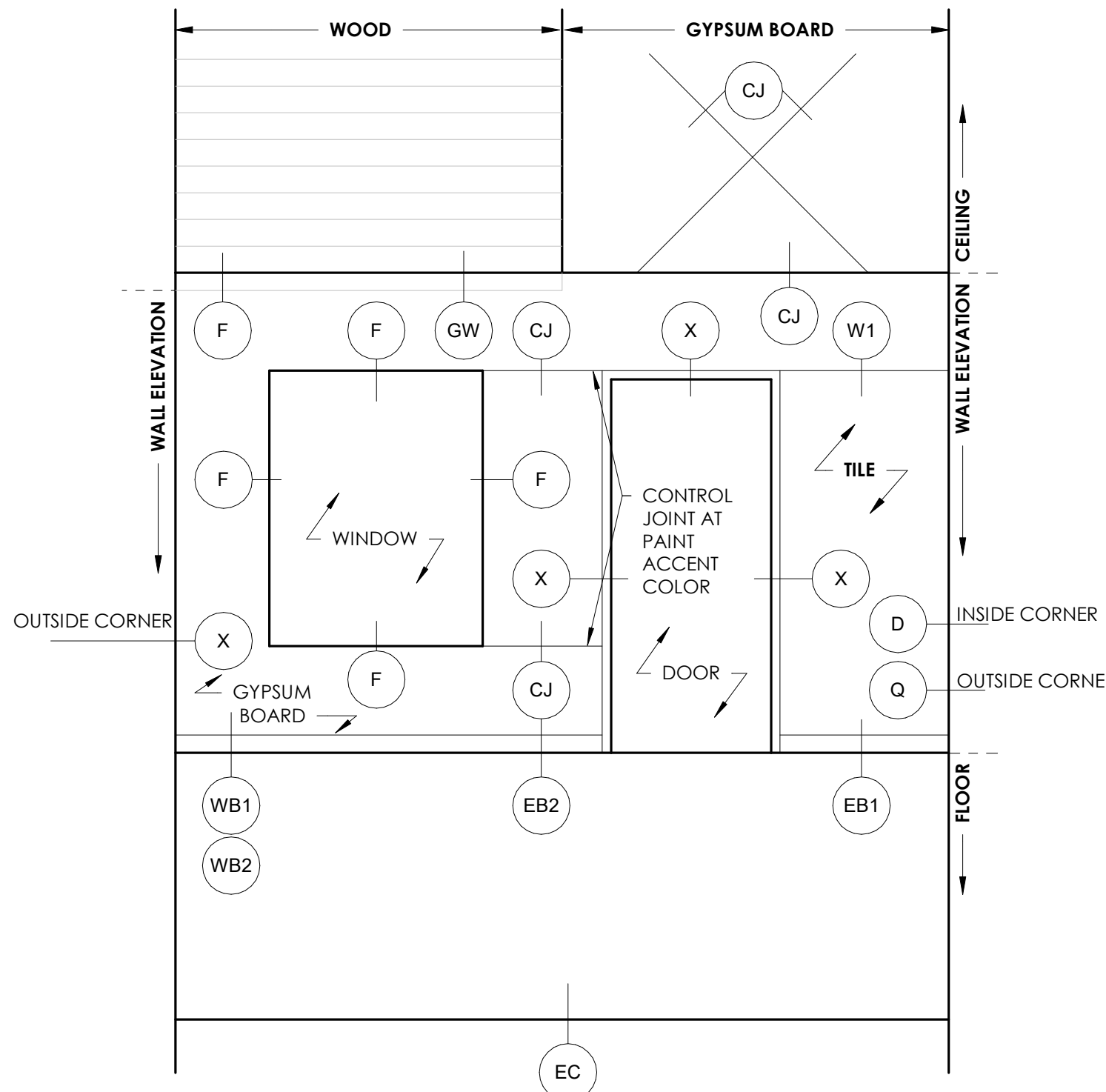
GW
1110
TRANSITION - WALL TO WOOD CEILING DETAIL
3" = 1'-0"

TYPICAL WALL MATERIAL TRANSITION DETAILS



W1
1110
TRANSITION - WALL TILE TO WALL DRYWALL DETAIL
3" = 1'-0"

TYPICAL CONTROL JOINT CONDITIONS



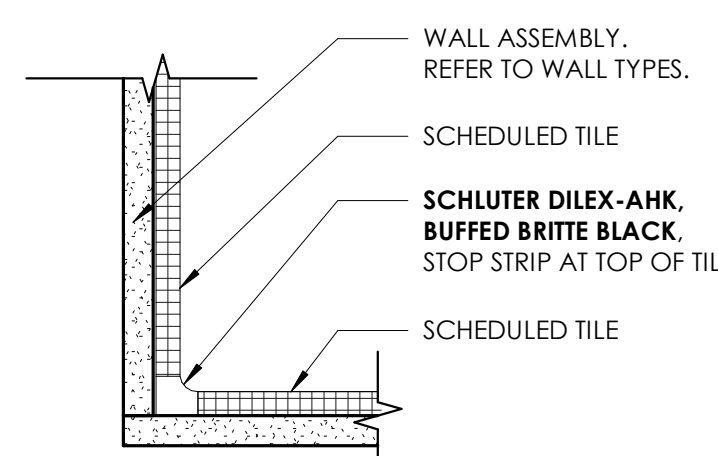
FINISH LEGEND

TAG	SPECIFICATION	NOTES
3-FORM		
3F-0	KODA XT 1/2", 12.7MM. - XI HELIUM N48 - VELLUM FINISH F04.	
3F-3	KODA XT 1/2", 12.7MM. - XI CALYPSO B23 - VELLUM FINISH F04.	
3F-7	KODA XT 1/2", 12.7MM. - XI FLAMINGO V19 - VELLUM FINISH F04.	
3F-8	KODA XT 1/2", 12.7MM. - XI ULAC V09 - VELLUM FINISH F04.	
ACOUSTICAL CEILING TILE		
ACT-1	095113	2' x 2' WHITE, ACOUSTICAL CEILING TILE WITH WHITE GRID PER SPECIFICATION
CARPET		
CPT-3	096813	DALTON BY J+J FLOORING KINETIX - POP (STYLE 1816) MODULAR, COLOR - 1719 AZUL
CPT-7	096813	DALTON BY J+J FLOORING KINETIX - POP (STYLE 1816) MODULAR, COLOR - 1711 ANARANJADO
CPT-8	096813	DALTON BY J+J FLOORING KINETIX - POP (STYLE 1816) MODULAR, COLOR - 1713 VIOLETA
CPT-9	096813	DALTON BY J+J FLOORING KINETIX - POP (STYLE 1816) MODULAR, COLOR - 1715 VERDE
CPT-20	096813	DALTON BY J+J FLOORING KINETIX - AGAINST THE GRAIN (STYLE 1840) MODULAR, COLOR - 2820 RYE
CPT-21	096813	DALTON BY J+J FLOORING KINETIX - AGAINST THE GRAIN (STYLE 1840) MODULAR, COLOR - 2819 BARLEY
CONTROL JOINT		
CJ	092900	FRY REGLET, DRYWALL REVEAL MOLDING - CLEAR ANODIZED FOR DRYWALL CEILING GRID. WIDTH OF REVEAL TO MATCH THICKNESS OF GYPSUM BOARD. REFER TO OTHER DETAILS THIS PAGE FOR OTHER CONTROL JOINTS. BLACK CONTROL JOINTS ARE USED AT BASE AND WALL CORNERS.
F	092900	FRY REGLET F-REVEAL, BUFFED BRITTE BLACK FINISH
EPOXY		
EB-2		STONHARD, STONRES RTZ - SMOKE 'N MIRRORS (EPOXY BASE)
EP-1		STONHARD, STONRES RTZ - SMOKE 'N MIRRORS (EPOXY FLOORS)
GLASS PRINTED COLORS		
G-3		PRINTED COLORS TO MATCH PAINT COLOR P-3. REFER TO A920.
G-7		PRINTED COLORS TO MATCH PAINT COLOR P-7. REFER TO A920.
G-8		PRINTED COLORS TO MATCH PAINT COLOR P-8. REFER TO A920.
G-9		PRINTED COLORS TO MATCH PAINT COLOR P-9. REFER TO A920.
G-10		PRINTED COLORS TO MATCH PAINT COLOR P-10. REFER TO A920.
GYPSUM BOARD CEILING		
GWB-1		GYPSUM BOARD CEILING, PAINTED, SHERWIN WILLIAMS, COLOR: SEE RCP FOR COLORS, FLAT FINISH
PAINT		
P-1	099123	SHERWIN WILLIAMS, CAS BLUE - CUSTOM FORMULA ON SHEET
P-2	099123	SHERWIN WILLIAMS, COLOR TO MATCH 32021 OUTREMER MOYEN, FORMULA ON SHEET.
P-3	099123	SHERWIN WILLIAMS, SW 6537 LUXE BLUE
P-4	099123	SHERWIN WILLIAMS, SW 6253 OLYMPUS WHITE
P-5	099113	SHERWIN WILLIAMS, SW 7062 ROCK BOTTOM
P-6		NOT USED
P-7	099123	SHERWIN WILLIAMS, SW 6326 HENNA SHADE
P-8	099123	SHERWIN WILLIAMS, SW 6559 CONCORD GRAPE
P-9	099123	SHERWIN WILLIAMS, SW 6431 LEAFPOOD
P-10	099123	SHERWIN WILLIAMS, SW 6487 LANTERN LIGHT
P-20	099123	SHERWIN WILLIAMS, SW 6253 OLYMPUS WHITE (EGGSHELL FINISH)
P-21	099123	SHERWIN WILLIAMS, SW 6254 LAZY GRAY (FLAT FINISH)
P-30	099123	SHERWIN WILLIAMS, SW 0077 CLASSIC FRENCH GRAY
SEALED CONCRETE		
SC-1		SEALED CONCRETE. GRIND EXISTING CONCRETE SURFACE PRIOR TO SEALING.
SEALER		
ST-1		SEALER FOR WOOD
ST-2		SEALER FOR STEEL
SOLID SURFACE		
SS-1	066510	FOR SINKS, USE SOLID SURFACE, CORIAN GLACIER WHITE B252 AND S610, FOR COUNTERTOPS, SIDES, TOPS, ETC, USE SOLID SURFACE CORIAN SILVER LINEAR, RUN STRIPES AS SHOWN ON DRAWINGS
TILE		
T-1	093030	TRINITYSURFACES.COM - SUMMIT - DARK GRAY - MATTE - 12" X 24". GROUT COLOR TO MATCH TILE. SUBMIT COLOR OPTIONS TO BE SELECTED BY ARCHITECT. USE EPOXY GROUT IN ALL RESTROOMS.
T-2	093030	TRINITYSURFACES.COM - SUMMIT - GRAY - MATTE - 12" X 24". GROUT COLOR TO MATCH TILE. SUBMIT COLOR OPTIONS TO BE SELECTED BY ARCHITECT. USE EPOXY GROUT IN ALL RESTROOMS.
T-3	093030	DALTILE - COLOR WHEEL CLASSIC, 1174 SEA BREEZE, SQUARE, 4x4, GLOSSY, USE GRT-3.
TILE GROUT		
GRT-1	093030	MAPEI 5019 PEARL GRAY
GRT-2	093030	MAPEI 5104 TIMBERWOLF
GRT-3	093030	MAPEI 5101 RAIN
VINYL FABRIC		
V-1		KNOLL TEXTILES BRIGADOON, 1988 - 466914 005 POOLSIDE
V-2		KNOLL TEXTILES VAST AT COLLECTION - K245219 HORIZON
V-3		KNOLL TEXTILES COLOR FELD - 466712 008 BLUEPRINT
V-8		KNOLL TEXTILES PRAIRIE - 466762 - 012 TRAIL
WINDOW TREATMENT		
WS-1	124920	ECO VEIL SHEER SCREENS, 6850 SERIES (1% OPEN), 6858 TITANIUM WITH DARK BRONZE ANODIZED HOUSING, DIVIDE BLINDS AT CENTERLINE OF WINDOW MULLIONS.
WOOD		
WD-1	062000	MILLWORK GRADE WHITE OAK, STAIN: NONE, FINISH: FLAT WATER POLY. REFER TO SPECIFICATIONS.
WD-2	062000	MILLWORK GRADE IPE FINISH WITH TWO COATS MESSMER'S U.V. PLUS NATURAL FOR WOOD DECKS SEALER. REFER TO SPECIFICATIONS.

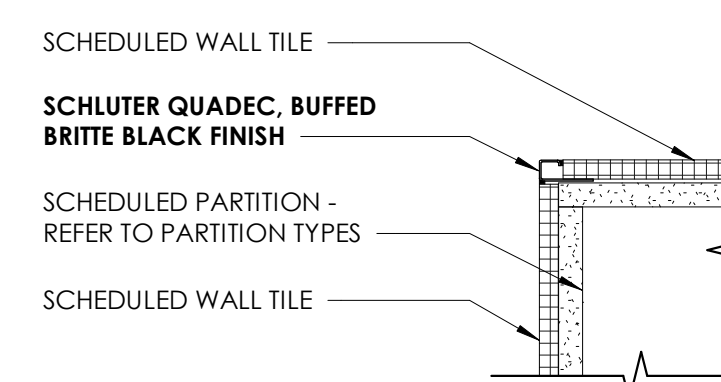
SHEET SPECIFIC NOTES

- PROVIDE SATIN FINISH ON ALL DOOR FRAMES AND WOOD THROUGHOUT.
- PROVIDE SATIN PAINTED FINISH ON GYPSUM BOARD WALLS THROUGHOUT, UNLESS NOTED OTHERWISE.
- PAINT HOLLOW METAL DOORS AND FRAMES TO MATCH ADJACENT WALLS, UNLESS NOTED OTHERWISE.
- INTERIOR DOORS, DOOR FRAMES TO BE PAINTED SAME COLOR AS WALL.
- REFER TO FINISH PLANS AND FINISH ELEVATIONS FOR ACCENT FINISH LOCATIONS AND FLOORING PATTERNS.
- ALL GYPSUM BOARD CEILINGS TO BE PAINTED P-4 UNLESS NOTED OTHERWISE. REFER TO ARCHITECTURAL REFLECTED CEILING PLAN FOR CLARIFICATION OF CEILING FINISHES AND 1110 FOR FINISH COLOR.
- REFER TO 1110 FOR FLOOR MATERIAL TRANSITION REQUIREMENTS.
- PROVIDE A CONTROL JOINT AT ALL PAINT TRANSITIONS.
- PAINT ALL WALL BASE COLOR OF ADJACENT CARPET.

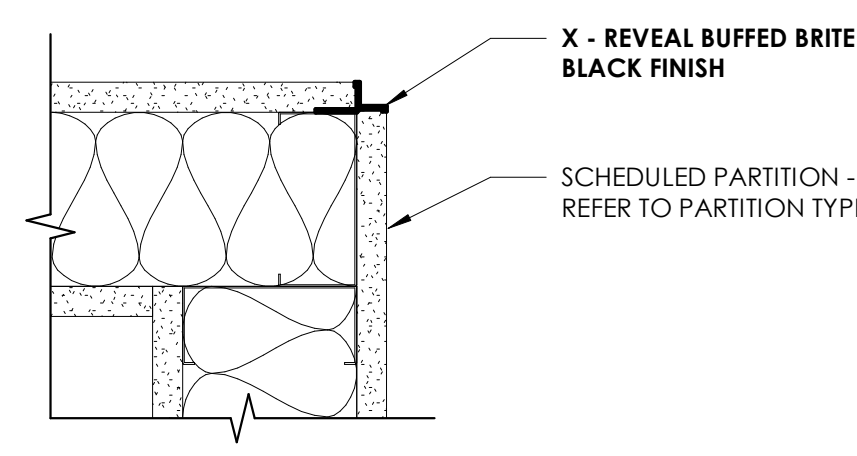
TYPICAL CORNER TURNING DETAILS



D
1110
INSIDE CORNER TILE PLAN DETAIL RESTROOMS
3" = 1'-0"



Q
1110
OUTSIDE CORNER TILE PLAN DETAIL RESTROOMS
3" = 1'-0"



X
1110
OUTSIDE CORNER GUARD PLAN DETAIL GYPSUM BOARD
3" = 1'-0"

CUSTOM COLORS

PAINT P-1 (4320N BLEU CERULEEN)				
P-1	MFR.:	SHERWIN WILLIAMS		
	COLOR:	CUSTOM MATCH SEE FORMULA BELOW		
	FINISH:	EGGSHELL		
PROMAR 200, ZERO VOC, DEEP, B20W2653				
CCE*COLORANT	OZ	32	64	128
W1-WHITE	6	57	-	-
L1-BLUE	2	14	1	-
R3-MAGENTA	-	34	-	1
Y1-YELLOW	-	3	-	1

PAINT P-2 (32021 OUTREMER MOYEN)				
P-2	MFR.:	SHERWIN WILLIAMS		
	COLOR:	CUSTOM MATCH SEE FORMULA BELOW		
	FINISH:	EGGSHELL		
PROMAR 200, ZERO VOC, EXTRA WHITE, B20W12651				
CCE*COLORANT	OZ	32	64	128
L1-BLUE	-	41	-	-
N1-RAW UMBER	-	11	-	-
R3-MAGENTA	-	26	1	1

PAINT P-3 (32020 BLEU OUTREMER 31)				
P-3	MFR.:	SHERWIN WILLIAMS		
	COLOR:	CUSTOM MATCH SEE FORMULA BELOW		
	FINISH:	EGGSHELL		
PROMAR 200, ZERO VOC, DEEP, B20W02653				
CCE*COLORANT	OZ	32	64	128
W1-WHITE	2	9	1	-
L1-BLUE	4	46	-	1
R3-MAGENTA	4	8	-	1

PAINT P-4 (32024 OUTREMER GRIS)				
P-4	MFR.:	SHERWIN WILLIAMS		
	COLOR:	CUSTOM MATCH SEE FORMULA BELOW		
	FINISH:	EGGSHELL		
PROMAR 200, ZERO VOC, EXTRA WHITE, B20W12651				
CCE*COLORANT	OZ	32	64	128
B1-BLACK	-	1	1	1
G2-NEW GREEN	-	1	-	1
Y3-DEEP GOLD	-	-	1	-



Cas Architecture
183 N Perry St
Lawrenceville, GA
30046
404.806.0556
www.casarc.com

CONSULTANT

SEAL



IF SEALED, DO NOT COPY

PROJECT

COLLINS P. LEE MEMORIAL LIBRARY
 237 HARRISBURG ROAD SW, MILLEDGEVILLE, GA 31061

COPYRIGHT © 2024 CAS ARCHITECTURE, P.C. ALL RIGHTS RESERVED. THIS DOCUMENT AND ANY REPRODUCTIONS IN WHOLE OR IN PART, ARE INSTRUMENTS OF SERVICE AND ARE THE SOLE PROPERTY AND COPYRIGHT OF CAS ARCHITECTURE, P.C. AND MAY NOT BE REPRODUCED, PUBLISHED, USED OR COPIED IN ANY MANNER WITHOUT WRITTEN PERMISSION FROM CAS ARCHITECTURE, P.C. THESE DOCUMENTS HAVE BEEN PREPARED SPECIFICALLY FOR THIS PROJECT. THEY ARE NOT SUITABLE FOR USE ON OTHER PROJECTS OR IN OTHER LOCATIONS.

THIS DOCUMENT WAS CREATED ELECTRONICALLY. THIS MEDIA SHOULD NOT BE CONSIDERED A CERTIFIED DOCUMENT UNLESS IT HAS BEEN PROPERLY SEALED AND ORIGINALLY SIGNED BY A REGISTERED ARCHITECT OF GA ARCHITECTURE, P.C.

THESE PLANS ARE COMPLEMENTARY. THEREFORE THE CONTRACTOR SHALL SEE THE ARCHITECTURAL, STRUCTURAL, MECHANICAL, PLUMBING, AND ELECTRICAL PLANS AND SPECIFICATIONS, WHEN REQUIRED BY ANY ONE SHALL BE BINDING AS REQUIRED BY ALL THE INTENTION OF THE DOCUMENTS. THE CONTRACTOR SHALL BE RESPONSIBLE FOR THE EQUIPMENT AND OTHER DEVICES NECESSARY FOR THE PROPER EXECUTION AND COMPLETION OF THE WORK. THE CONTRACTOR SHALL BE RESPONSIBLE FOR THE COORDINATION OF THE WORK OF ALL TRADES.

NO.	DATE	ISSUANCE / REVISIONS

SHEET TITLE

FINISH LEGEND, BASE AND TRANSITION DETAILS

SHEET NUMBER

1110

PROJECT DATE DRAWN

25114 2026/03/20 CAS

25114.LEE MEMORIAL LIBRARY F1V24