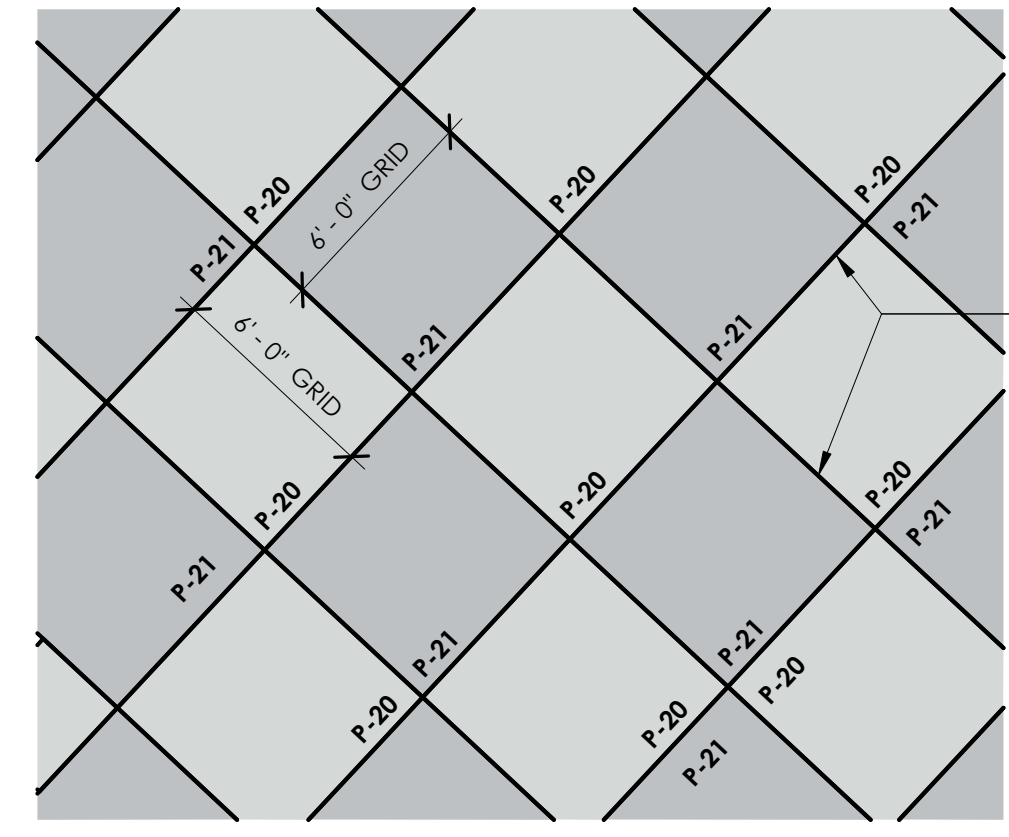
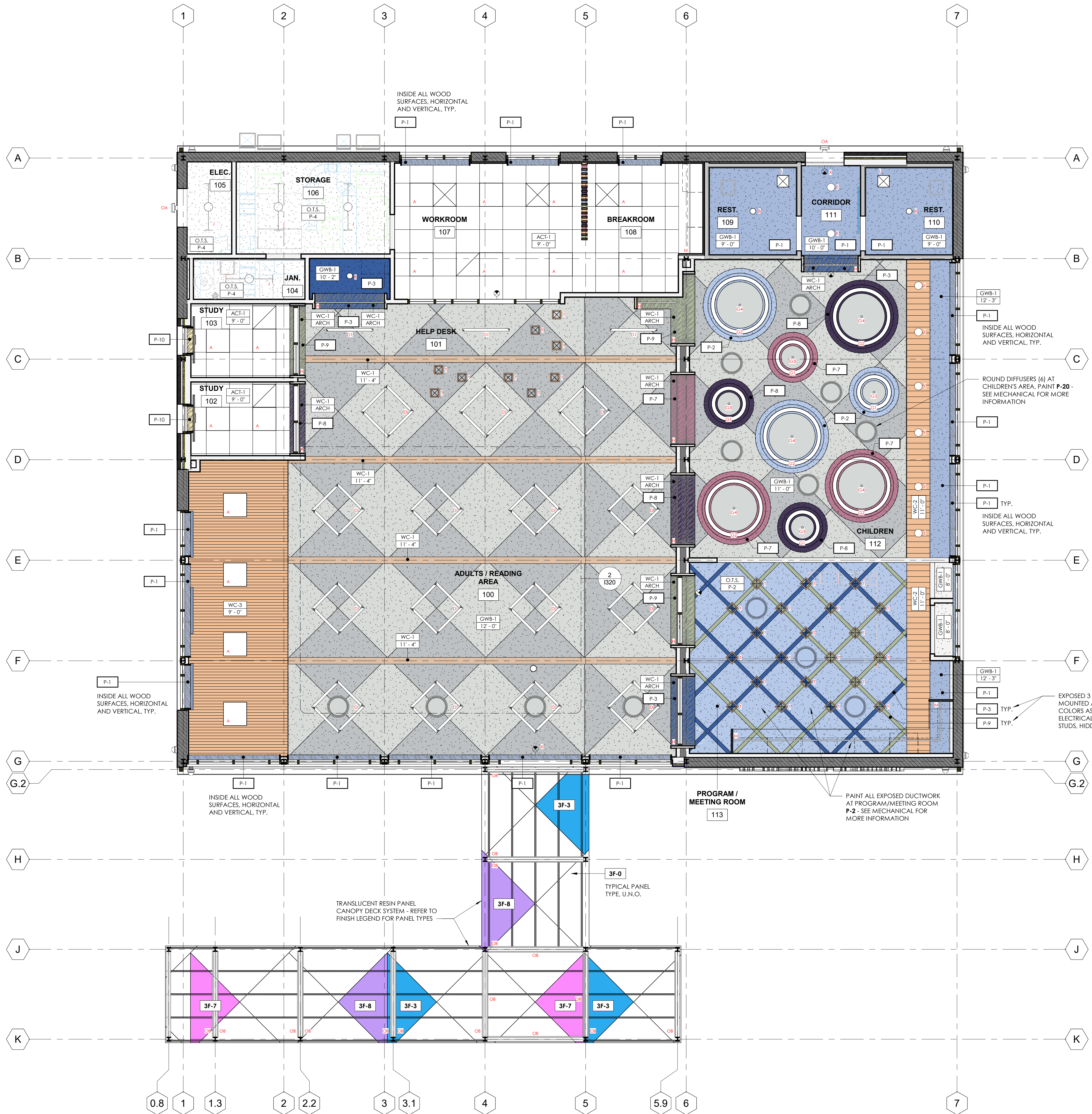


SHEET SPECIFIC NOTES

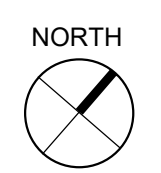
- USE THIS DRAWING FOR COORDINATION OF CEILING ITEMS. USE THIS DRAWING FOR GRID LAYOUT, LIGHT FIXTURE LOCATIONS, MECHANICAL CEILING ITEM LOCATIONS, AND ALL OTHER CEILING ITEMS. NOTIFY ARCHITECT OF ANY DISCREPANCIES.**
- REFER TO ELECTRICAL DRAWINGS FOR LIGHTING FIXTURE LAYOUT AND SPECIFICATIONS.
 - REFER TO MECHANICAL DRAWINGS FOR SUPPLY AND RETURN LAYOUT AND OTHER FIXTURES.
 - CENTER CEILING GRIDS IN BOTH DIRECTIONS IN ALL CORRIDORS AND IN EACH ROOM WITH LAY-IN CEILINGS, UNLESS INDICATED OTHERWISE.
 - CENTER INTERIOR DOWN LIGHTS IN CEILING TILES, IN ROOMS WITHOUT CEILING TILES, CENTER DOWN LIGHTS IN BOTH DIRECTIONS TO RELATIVE WALLS, UNLESS INDICATED OTHERWISE.
 - CENTER LAY-IN LIGHT FIXTURES IN BOTH DIRECTIONS IN EACH SPACE, UNLESS INDICATED OTHERWISE.
 - PROVIDE ADEQUATE ACCESS TO EQUIPMENT, FITTINGS, VALVES, ETC. THAT ARE NOT EXPOSED ABOVE CEILINGS AND BEHIND WALL FINISHES. OPENINGS SHALL BE PROTECTED AS APPROPRIATE FOR THE FIRE RESISTANCE RATING OF THE BARRIER PER NFPA 101 LIFE SAFETY CODE.
 - ALL NOTED CEILING HEIGHTS ARE MEASURED FROM TOP OF SLAB.
 - PROVIDE SEISMIC RESTRAINTS FOR SUSPENDED CEILING SYSTEMS IN APPLICABLE SEISMIC CATEGORY DESIGN SHALL COMPLY WITH REQUIREMENTS OF IBC SECTION 1613.
 - THE SPECIFIED MINIMUM TENSION TEST LOAD FOR SPLICES OF RUNNERS IN SUSPENDED CEILINGS SHALL BE 180 POUNDS PER CISCA 3-4 OR CURRENT CODE.
 - PRIOR TO FINAL COMPLETION, RESET ALL CEILING TILES AND REPLACE DAMAGED TILES.
 - COORDINATE LIGHTS WITH DUCTWORK.
 - NOTIFY ARCHITECT IMMEDIATELY OF ANY CLEARANCE CONFLICTS WITH LIGHT FIXTURES (DUCTWORK, SPRINKLER LINES, ETC.) ABOVE CEILING.
 - PROVIDE EMERGENCY LIGHTING, STROBES, ALARMS, FIRE PULLS AND SMOKE DETECTORS AS REQUIRED BY CODE.
 - PROVIDE EXIT SIGNS AS REQUIRED BY CODE AND SHOWN ON THE DRAWINGS.
 - ALIGN ALL SHADES WITH WINDOWS.



2 CHECKERBOARD CEILING DETAIL
3/16" = 1'-0"



1 REFLECTED CEILING FINISH PLAN
1/4" = 1'-0"



GRAPHIC LEGEND

	ACT-1 2x2 ACOUSTICAL CEILING TILE WITH REGULAR EDGE (WHITE GRID)
	GWB-1 GYPSUM WALLBOARD CEILING SEE FINISH LEGEND ON SHEET 1110 FOR PAINT COLORS
	WC-1 MILLWORK GRADE WD-1 WITH SPECIFIED SEALER
	WC-2 1x6 TONGUE AND GROOVE WD-1 WITH SPECIFIED SEALER
	WC-3 RECLAIMED WOOD WITH SPECIFIED SEALER
	O.T.S. OPEN TO STRUCTURE. SEE SHEET 1120 AND FINISH LEGEND ON SHEET 1110 FOR PAINT COLORS.

CONTROL JOINTS

REFER TO SHEET 1110 FOR CONTROL JOINT SPECIFICATIONS.

G3/G4 ACOUSTIC PENDANT

PROVIDE **CAMMAN LIGHTING, ACOUSTIC MODIFIED UNIT PENDANT** WHERE DESIGNATED BY "G3" AND "G4" ON THE ARCHITECTURAL RCP. FIXTURE IS SUSPENDED. PROVIDE MANUFACTURER'S FULL RANGE OF COLOR OPTIONS.

LIGHT FIXTURE MOUNTING HEIGHTS

- NOTE:**
ALL LIGHT FIXTURES NOT LISTED BELOW ARE CEILING MOUNTED. DIMENSIONS LISTED ARE TO BOTTOM OF LIGHT FIXTURE.
- FIXTURE TYPE 'D': 10'-0" A.F.F.
 - FIXTURE TYPE 'E': 9'-0" A.F.F.
 - FIXTURE TYPE 'G': 11'-0" A.F.F. (G1, G2, G3, G4)
 - FIXTURE TYPE 'I': 9'-0" A.F.F.
 - FIXTURE TYPE 'T': 9'-0" A.F.F. (AT PROGRAM/MEETING ROOM) 8'-0" A.F.F. (ABOVE HELP DESK)