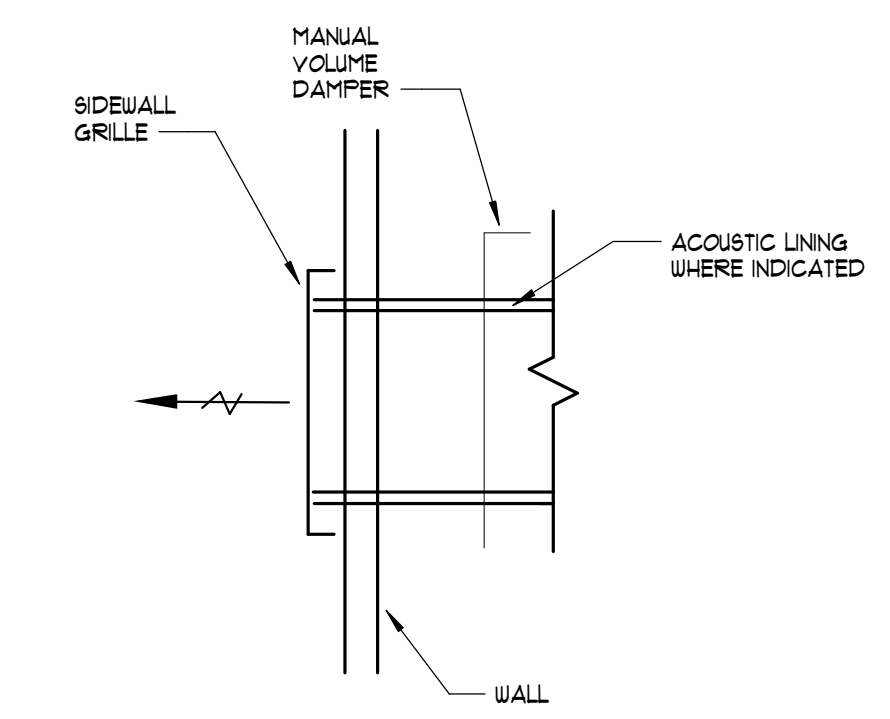
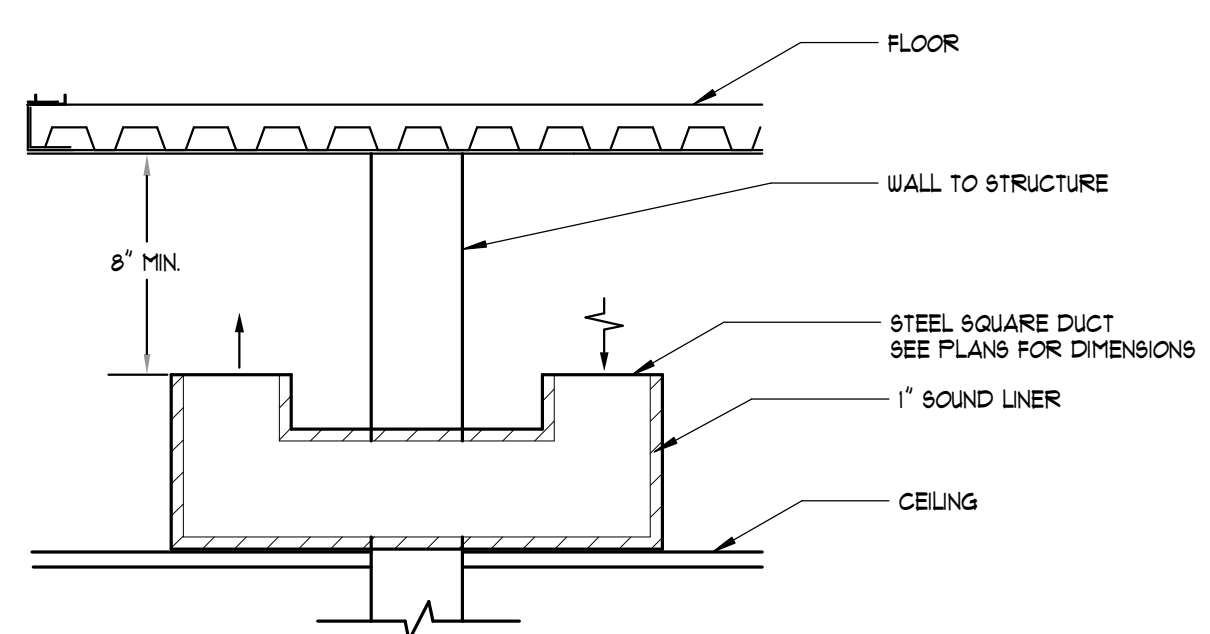


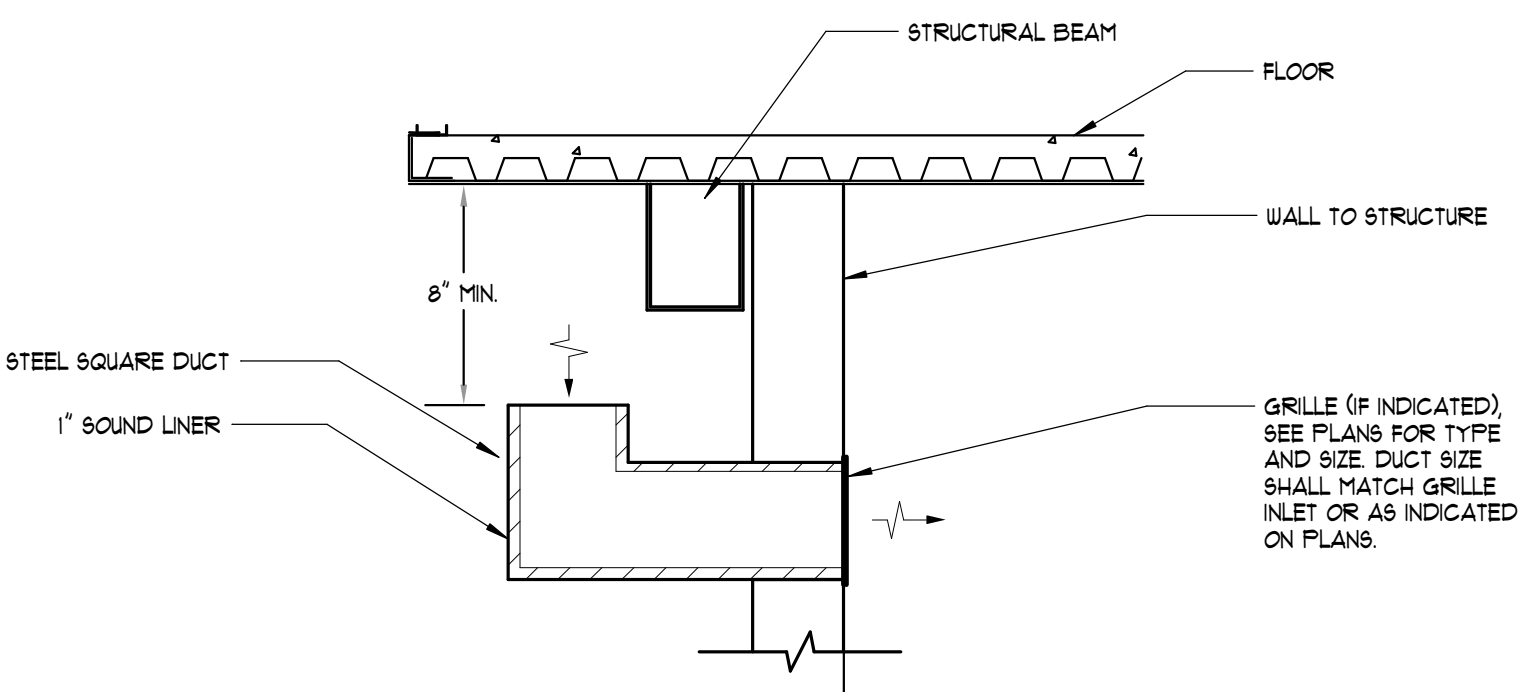
10 TYPICAL DIFFUSER CONNECTION (SIDE OF DUCT)
NOT TO SCALE



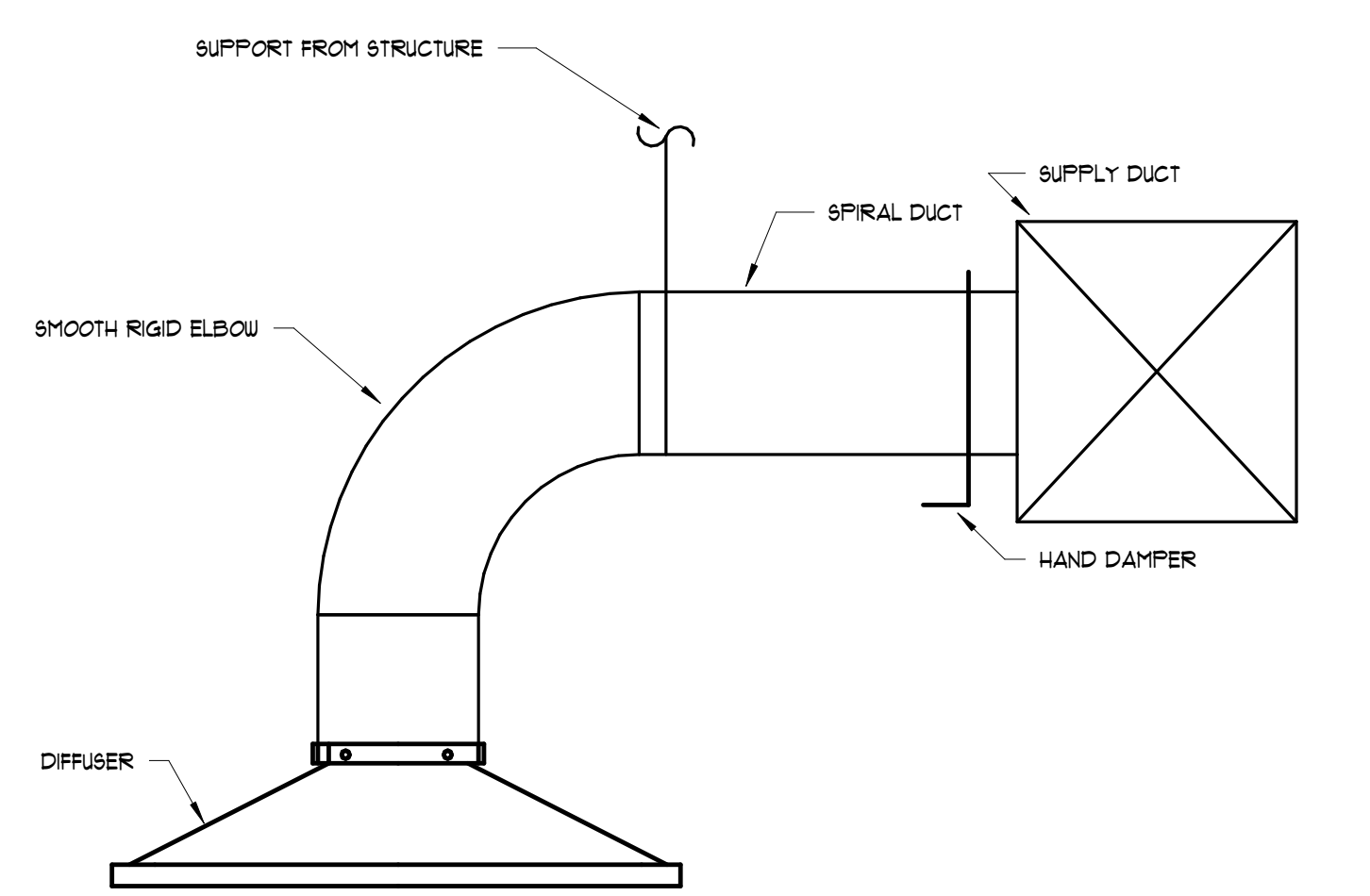
11 TYPICAL SIDEWALL GRILLE
NOT TO SCALE



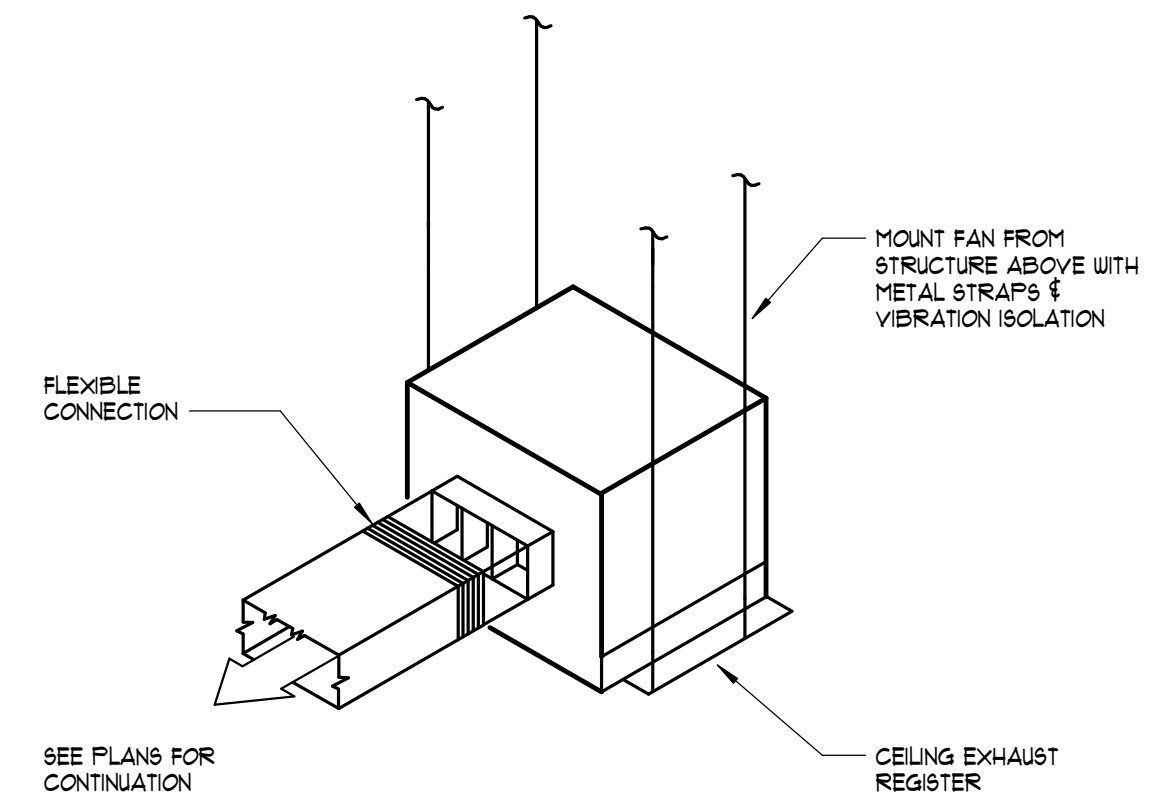
12 TYPICAL TRANSFER BOOT DETAIL - TURNED UP
NOT TO SCALE



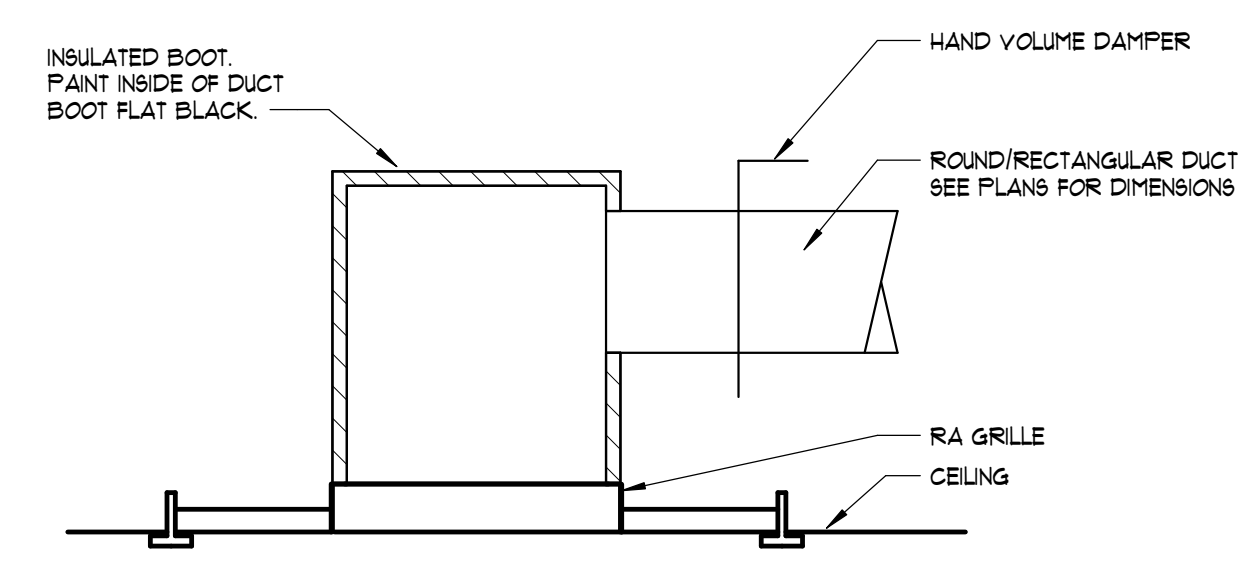
13 TYPICAL RETURN TRANSFER W/ SIDEWALL GRILLE
NOT TO SCALE



14 TYPICAL DIFFUSER CONNECTION (OPEN TO STRUCTURE AREAS)
NOT TO SCALE

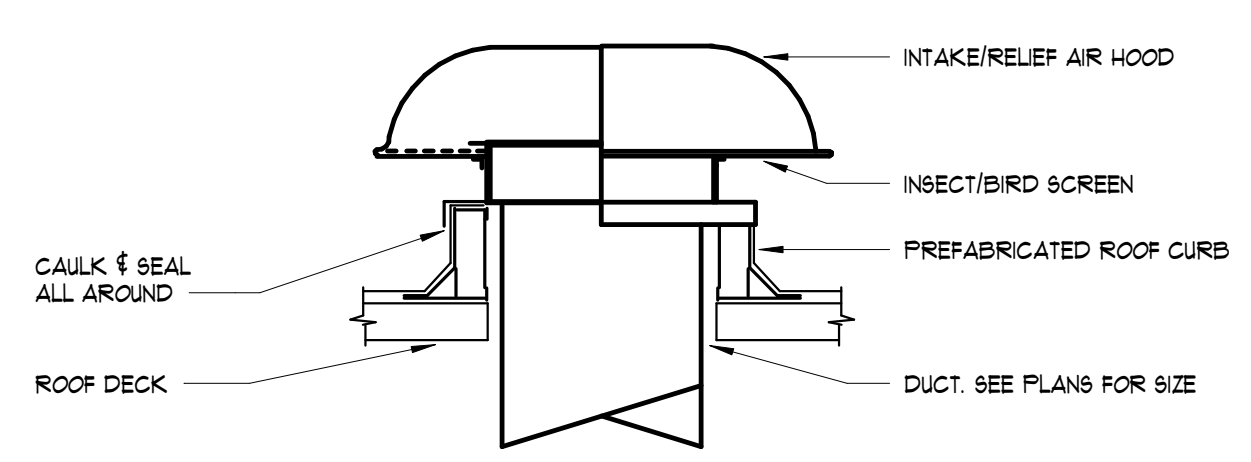


5 CEILING EXHAUST FAN DETAIL
NOT TO SCALE

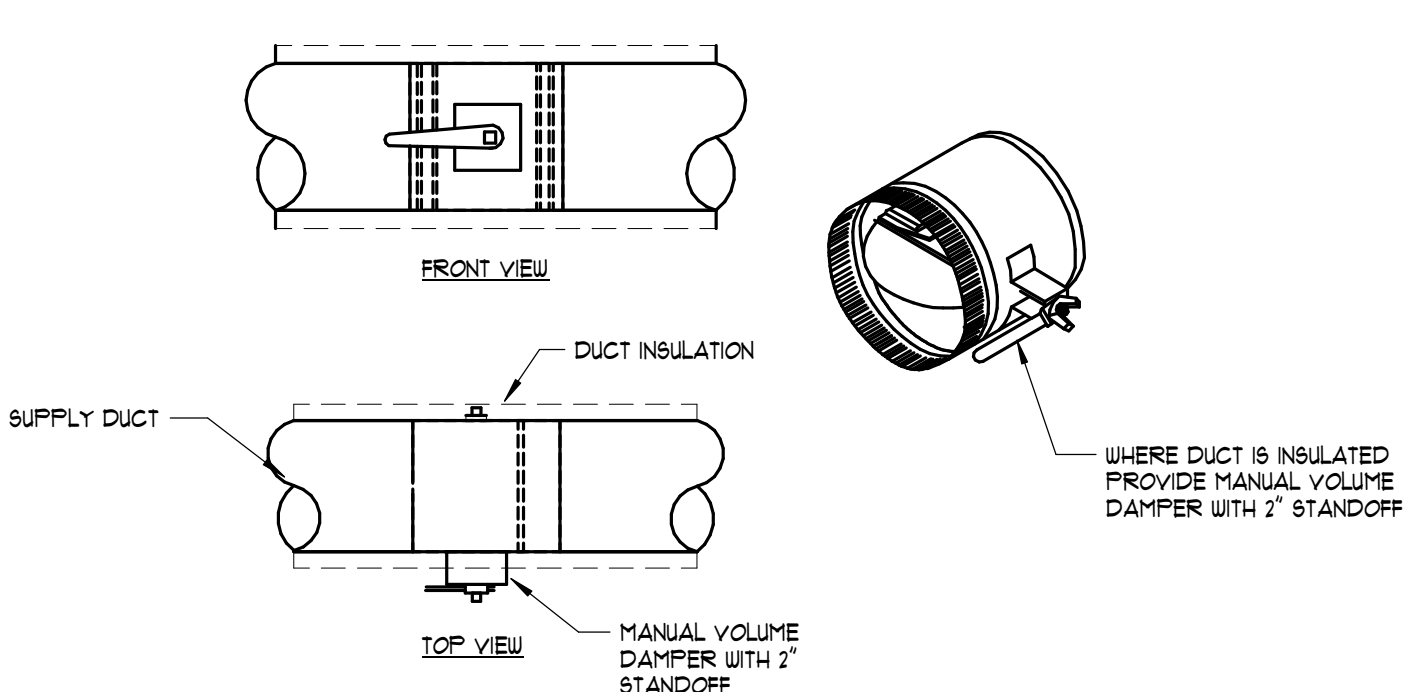


6 DUCTED RETURN BOOT DETAIL
NOT TO SCALE

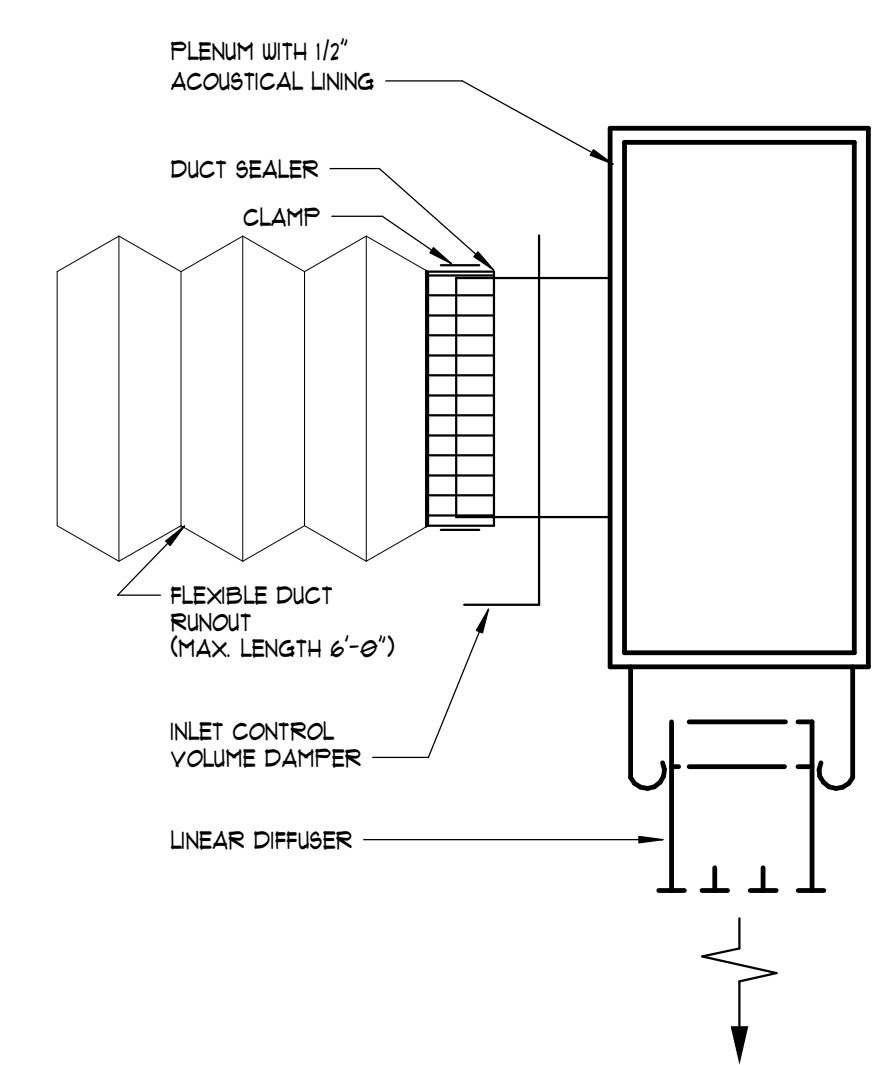
NOTES:
1. BOOT SIZE SHALL MATCH RETURN AIR GRILLE SIZE



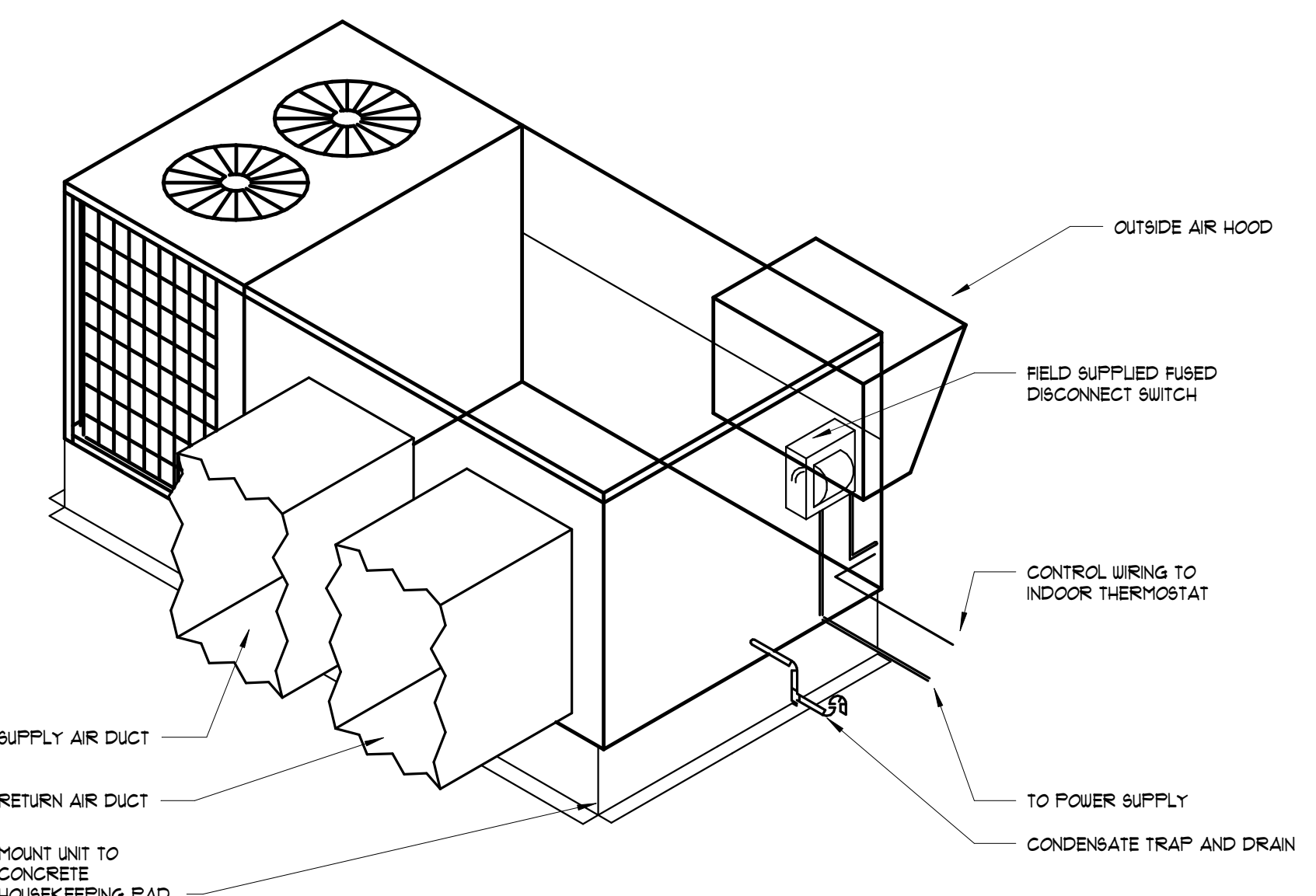
7 ROOF HOOD DETAIL
NOT TO SCALE



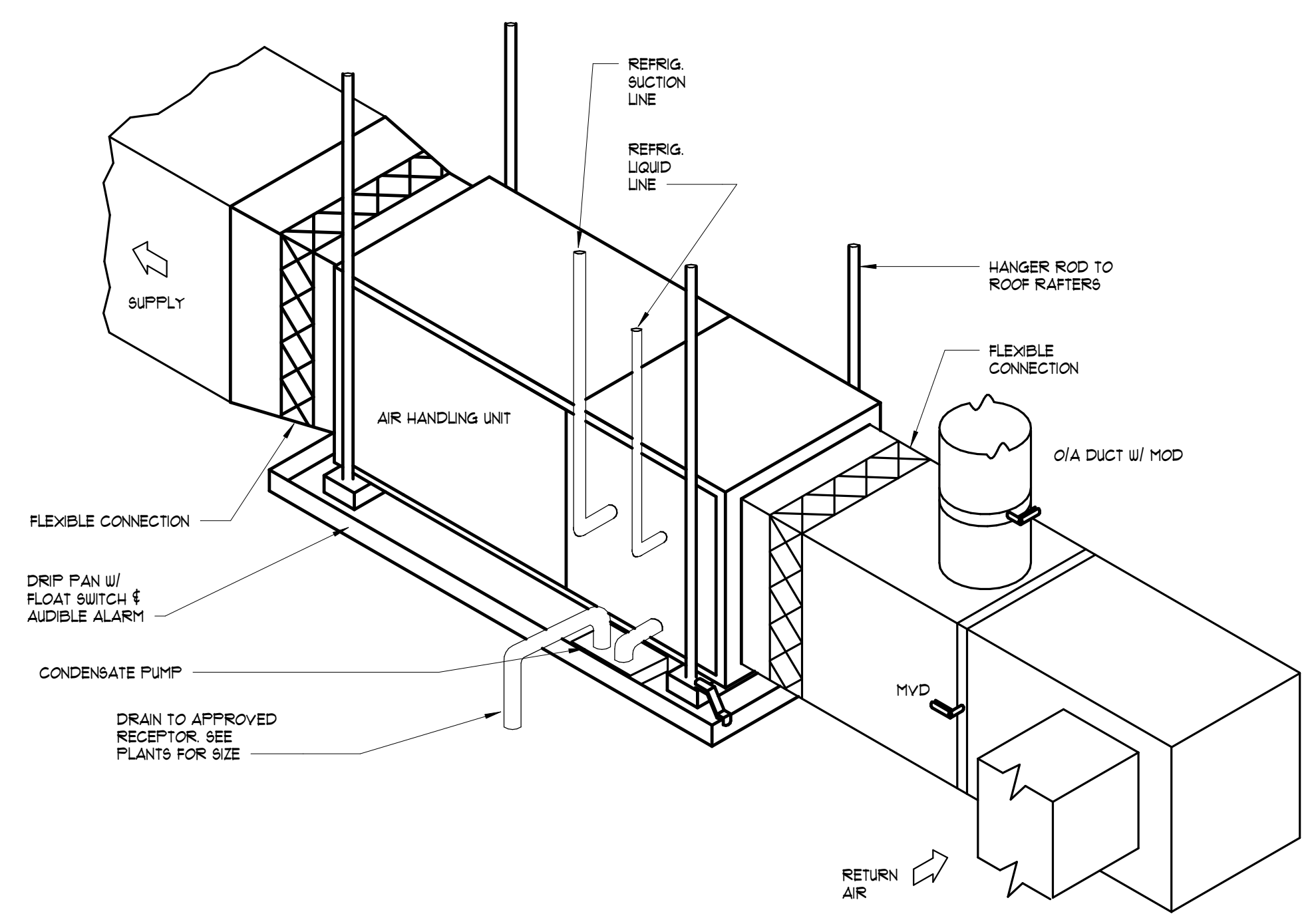
8 MANUAL VOLUME DAMPER W/ STANDOFF
NOT TO SCALE



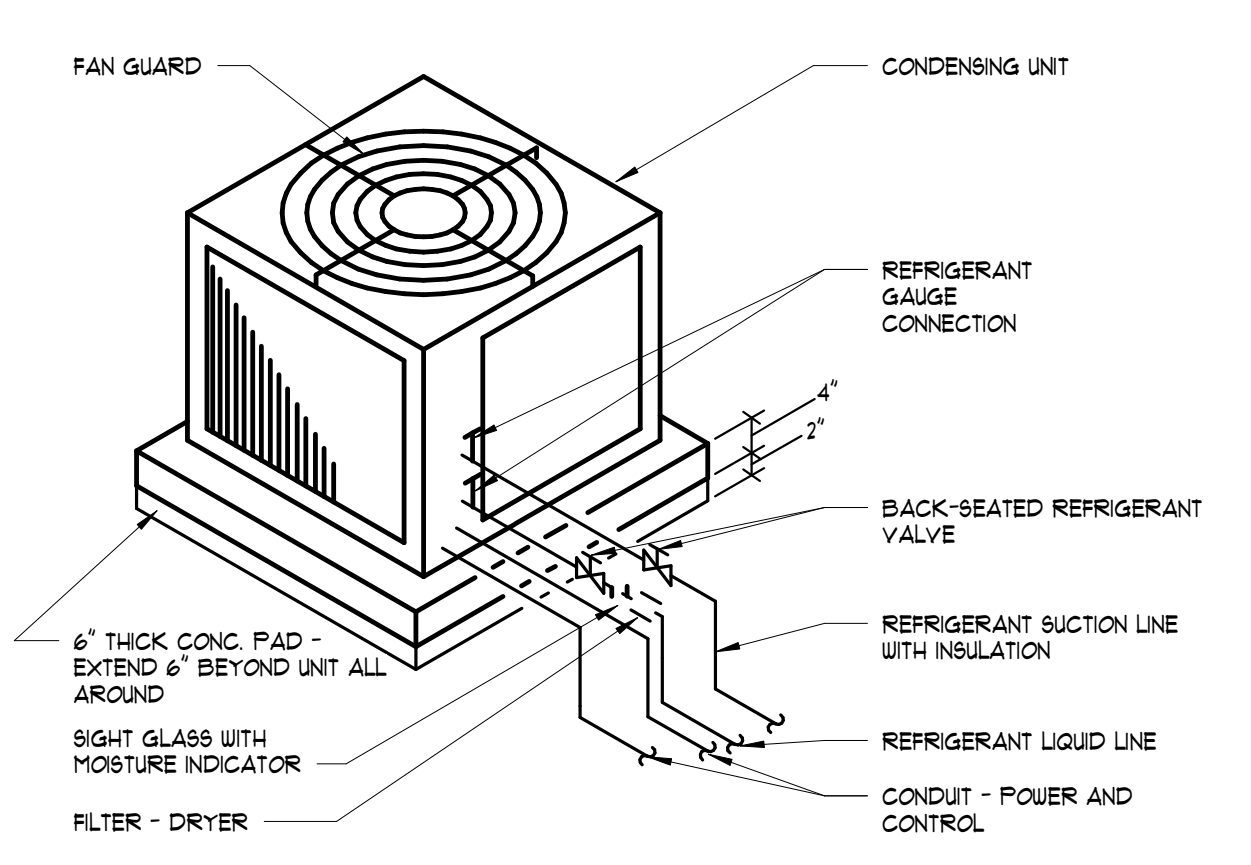
9 LINEAR DIFFUSER CONNECTION (VERTICAL DISCHARGE)
NOT TO SCALE



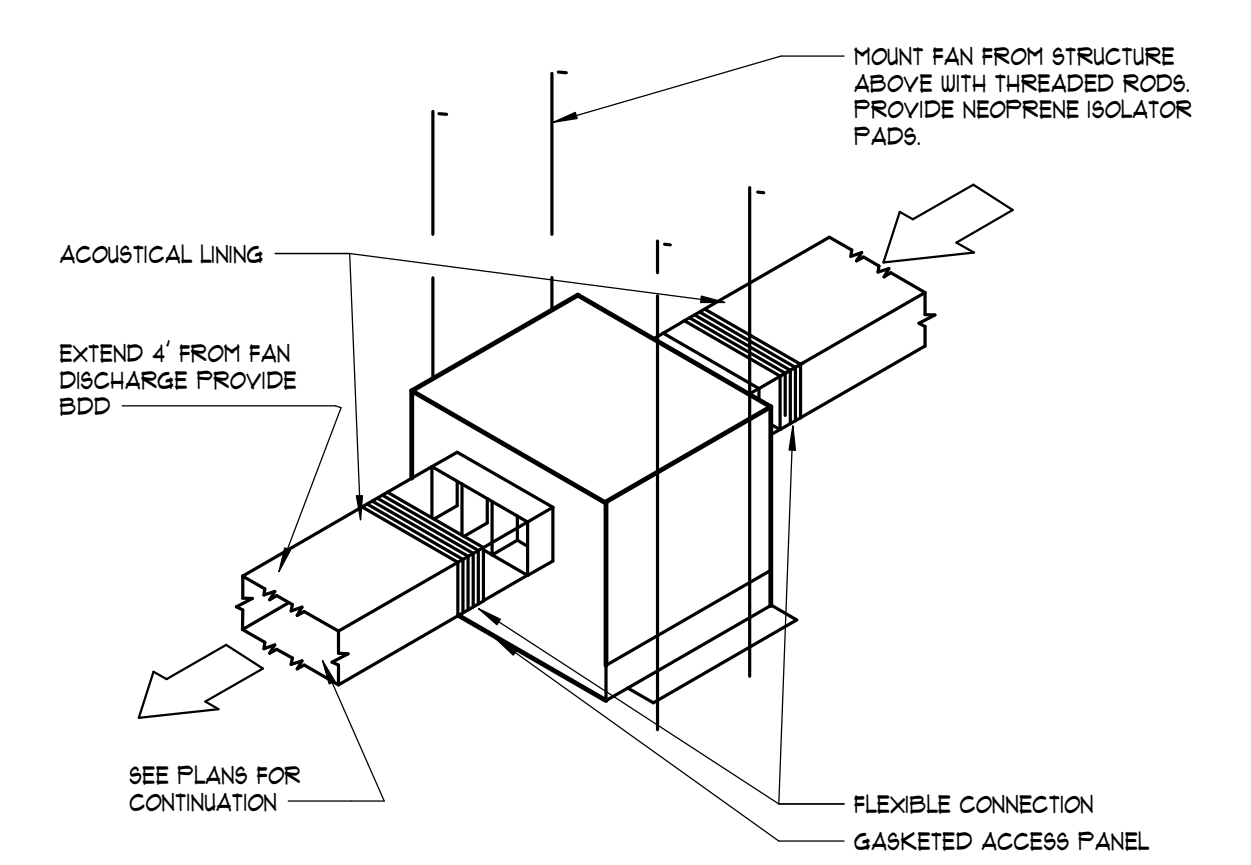
1 PACKAGED ROOFTOP UNIT WITH ELECTRIC HEAT & HORIZONTAL SUPPLY/RETURN
NOT TO SCALE



2 HORIZONTAL AIR HANDLING UNIT W/ CONDENSATE PUMP
NOT TO SCALE



3 AIR COOLED CONDENSING UNIT - SLAB MOUNTED AT GRADE
NOT TO SCALE



4 INLINE CEILING EXHAUST FAN DETAIL
NOT TO SCALE

COLLINS P. LEE MEMORIAL LIBRARY
237 HARRISBURG RD SW, MILLEDGEVILLE, GA 31061

COPYRIGHT © 2025 CAS ARCHITECTURE, P.C. ALL RIGHTS RESERVED. THE DOCUMENT AND ANY REPRODUCTIONS IN WHOLE OR IN PART, ARE INSTRUMENTS OF SERVICE AND ARE THE SOLE PROPERTY AND COPYRIGHT OF CAS ARCHITECTURE, P.C. AND MAY NOT BE REPRODUCED, PUBLISHED, USED OR COPIED IN ANY MANNER WITHOUT WRITTEN PERMISSION FROM CAS ARCHITECTURE, P.C. THESE DOCUMENTS HAVE BEEN PREPARED SPECIFICALLY FOR THIS PROJECT. THEY ARE NOT SUITABLE FOR USE ON OTHER PROJECTS OR IN OTHER LOCATIONS.

THIS DOCUMENT WAS CREATED ELECTRONICALLY. THIS MEDIA SHOULD NOT BE CONSIDERED A CERTIFIED DOCUMENT UNLESS IT HAS BEEN PROPERLY SEALED AND ORIGINALLY SIGNED BY A REGISTERED ARCHITECT OF GA ARCHITECTURE, P.C.

THESE PLANS ARE COMPLEMENTARY. THEREFORE THE CONTRACTOR SHALL SEE THE ARCHITECTURAL, STRUCTURAL, MECHANICAL, PLUMBING, AND ELECTRICAL PLANS AND SPECIFICATIONS, WHEN REQUIRED BY ANY ONE SHALL BE BINDING AS REQUIRED BY ALL THE INTENTION OF THE DOCUMENTS. TO INCLUDE ALL LABOR, MATERIALS, EQUIPMENT AND OTHER ITEMS NECESSARY FOR THE PROPER EXECUTION AND COMPLETION OF THE WORK. THE CONTRACTOR SHALL BE RESPONSIBLE FOR THE COORDINATION OF THE WORK OF ALL TRADES.

NO.	DATE	ISSUANCE / REVISIONS

SHEET TITLE
DETAILS - HVAC

SHEET NUMBER

M101

PROJECT DATE DRAWN
ZS114 03/20/2026 AB/BS

TITLE