

COLLINS P. LEE MEMORIAL LIBRARY
 237 HARRISBURG RD SW, MILLEDGEVILLE, GA 31061

COPYRIGHT © 2025 CAS ARCHITECTURE, P.C. ALL RIGHTS RESERVED. THIS DOCUMENT AND ANY REPRODUCTIONS, IN WHOLE OR IN PART, ARE INSTRUMENTS OF SERVICE AND ARE THE SOLE PROPERTY AND COPYRIGHT OF CAS ARCHITECTURE, P.C. AND MAY NOT BE REPRODUCED, PUBLISHED, USED OR COPIED IN ANY MANNER WITHOUT WRITTEN PERMISSION FROM CAS ARCHITECTURE, P.C. THESE DOCUMENTS HAVE BEEN PREPARED SPECIFICALLY FOR THIS PROJECT. THEY ARE NOT SUITABLE FOR USE ON OTHER PROJECTS OR IN OTHER LOCATIONS.

THIS DOCUMENT WAS CREATED ELECTRONICALLY. THIS MEDIA SHOULD NOT BE CONSIDERED A CERTIFIED DOCUMENT UNLESS IT HAS BEEN PROPERLY SEALED AND ORIGINALLY SIGNED BY A REGISTERED ARCHITECT OF CAS ARCHITECTURE, P.C.

THESE PLANS ARE COMPLEMENTARY. THEREFORE THE CONTRACTOR SHALL SEE THE ARCHITECTURAL, STRUCTURAL, MECHANICAL, PLUMBING, AND ELECTRICAL PLANS AND SPECIFICATIONS, WHEN OBTAINED BY ANY ONE SHALL BE BINDING AS REQUIRED BY ALL THE INTENTION OF THE DOCUMENTS BEING USED. ALL LABOR, MATERIALS, EQUIPMENT AND OTHER ITEMS NECESSARY FOR THE PROPER EXECUTION AND COMPLETION OF THE WORK, THE CONTRACTOR SHALL BE RESPONSIBLE FOR THE COORDINATION OF THE WORK OF ALL TRADES.

NO.	DATE	ISSUANCE / REVISIONS

SHEET TITLE
 FLOOR PLAN - ELECTRICAL (MECH)

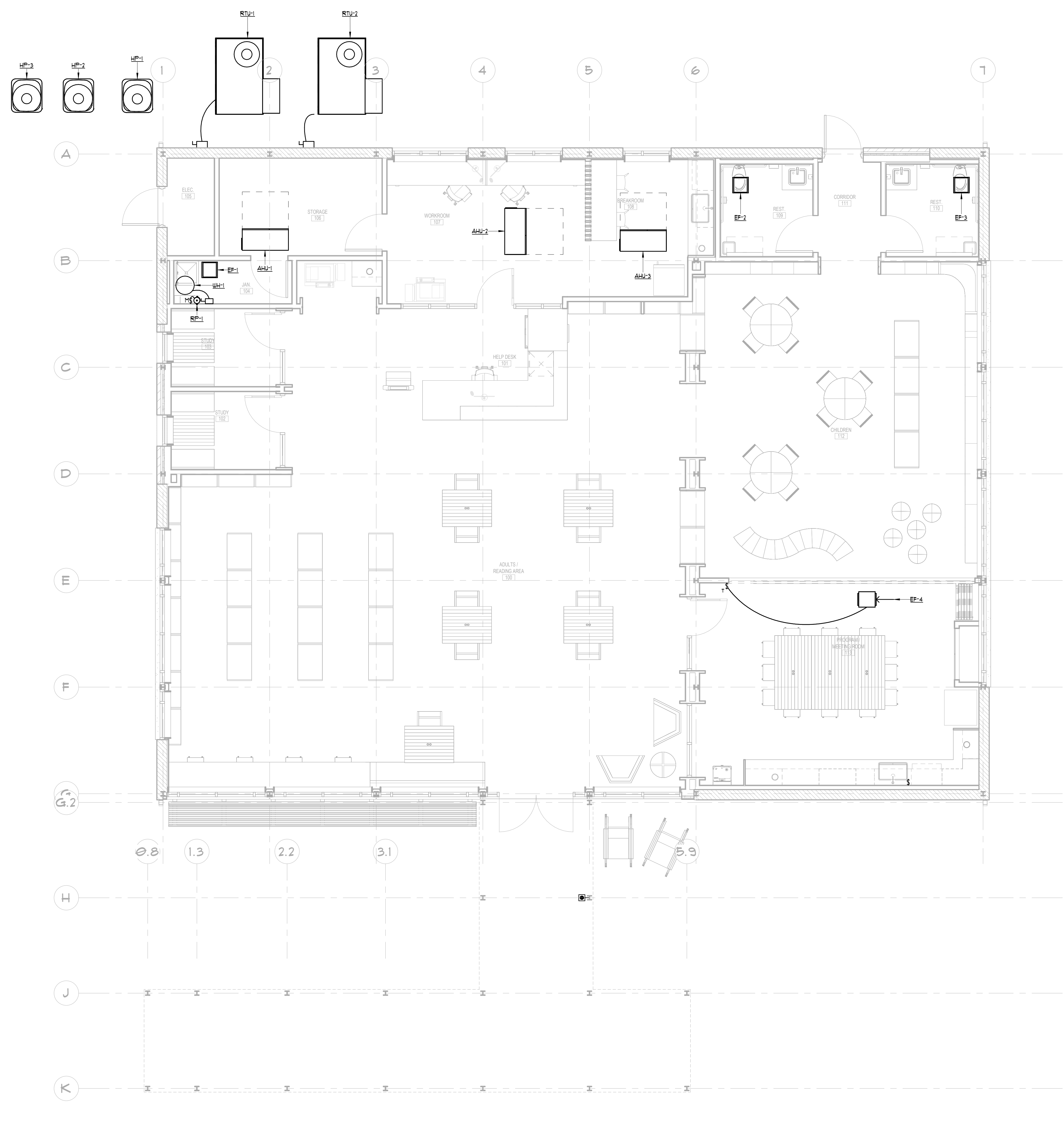
SHEET NUMBER
E221

PROJECT
 25114

DATE
 03/20/2026

DRAWN
 DRP

FILE



MECHANICAL EQUIPMENT CONNECTION SCHEDULE							
TAG	LOAD	VOLT/ PHASE	CIRCUIT DESIGNATION	BREAKER	BRANCH CIRCUIT	DISCONNECT	NOTES
RTU-1	59A (MCA)	208/3	LI-38,40,42	60/3	3#4, 1#2G, 1/2" C.	60A/3P/3R/60AF	
RTU-2	42A (MCA)	208/3	LI-37,39,41	35/3	3#8, 1#10G, 1" C.	60A/3P/3R/25AF	
AHU-1	43.3A (MCA)	208/1	LI-26,28	45/2	2#8, 1#10G, 1/2" C.	60A/2P/1/45AF	
AHU-2	43.3A (MCA)	208/1	LI-27,29	45/2	2#8, 1#10G, 1/2" C.	60A/2P/1/45AF	
AHU-3	43.3A (MCA)	208/1	LI-30,32	45/2	2#8, 1#10G, 1/2" C.	60A/2P/1/45AF	
HP-1	16.3A (MCA)	208/1	LI-19,21	25/2	2#10, 1#10G, 3/4" C.	30A/2P/3R/25AF	
HP-2	16.3A (MCA)	208/1	LI-22,24	25/2	2#10, 1#10G, 3/4" C.	30A/2P/3R/25AF	
HP-3	16.3A (MCA)	208/1	LI-23,25	25/2	2#10, 1#10G, 3/4" C.	30A/2P/3R/25AF	
EP-1	45 W	120/1	LI-1 (PARTIAL)	20/1	2#12, 1#12G, 3/4" C.	MOTOR RATED SWITCH	3
EP-2	45 W	120/1	SEE NOTES	SEE NOTES	2#12, 1#12G, 3/4" C.	MOTOR RATED SWITCH	2
EP-3	45 W	120/1	SEE NOTES	SEE NOTES	2#12, 1#12G, 3/4" C.	MOTOR RATED SWITCH	2
EP-4	1/6 HP	120/1	LI-1 (PARTIAL)	-	2#12, 1#12G, 3/4" C.	MOTOR RATED SWITCH	4
WH-1	6 KW	208/3	LI-31,33,35	25/3	3#10, 1#10G, 3/4" C.	30A/3P/1/25AF	
RP-1	90 W	120/1	LI-1	20/1	2#12, 1#12G, 3/4" C.	MOTOR RATED SWITCH	

MECHANICAL EQUIPMENT CONNECTION SCHEDULE NOTES	
NUMBER	NOTES
1	PROVIDE DUST MOUNTED SMOKE DETECTORS (QUANTITY PER NFPA) FOR THIS UNIT. COORDINATE MOUNTING REQUIREMENTS WITH HVAC SYSTEM INSTALLER. THE DETECTORS TO BUILDING FIRE ALARM SYSTEM. THE UNIT SHALL SHUT DOWN IN THE EVENT OF SMOKE DETECTION PER NFPA.
2	EXHAUST FAN TO BE CONNECTED TO SAME CIRCUIT AS LIGHTING SERVING THE RESTROOM AND TURN ON / OFF WITH THE LIGHTING.
3	FAN TO BE HARDWIRED TO RUN 24/7.
4	FAN TO BE CONTROLLED BY WALL MOUNTED TIMER SWITCH. CONTRACTOR SHALL CONFIRM EXACT LOCATION OF TIMER SWITCH IN THE FIELD WITH OWNER.

ELECTRICAL FLOOR PLAN - LEVEL 01
 114' x 110'

