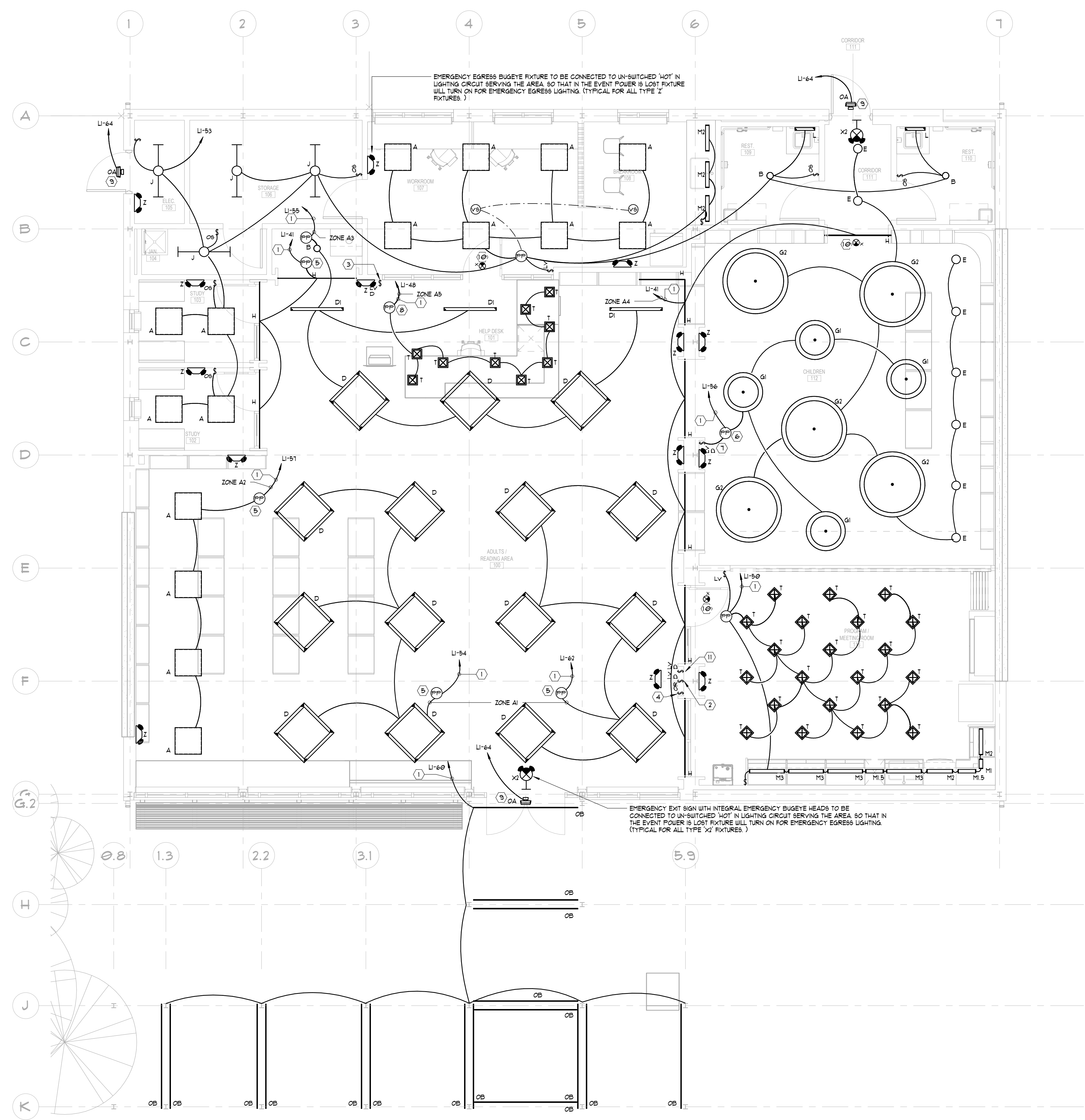


NO.	DATE	ISSUANCE / REVISIONS
1		ISSUED FOR PERMIT AND BID

LIGHTING FIXTURE SCHEDULE						
FIXTURE TYPE	DESCRIPTION	INPUT WATTS	LAMPS	BALLAST	MANUFACTURER	NOTES
A	2' x 2' LED RECESSED TROFFER WITH DROP LENS	35 W	LED	LED DRIVER WITH 0-10V DIMMING	ELITE LIGHTING #Z2-CUBE-LED-4000L-DIM0-MVOLT-30K-85-2-4-6	
AE	SAME AS TYPE 'A' EXCEPT WITH EMERGENCY BATTERY BACKUP	35 W	LED	LED DRIVER WITH 0-10V DIMMING	ELITE LIGHTING #Z2-CUBE-LED-4000L-DIM0-MVOLT-30K-85-2-4-6-EMG	
B	4" OPEN LED DOWNLIGHT	25 W	LED	LED DRIVER WITH 0-10V DIMMING	ELITE LIGHTING #H44-LED-1000L/1500L/2000L-DIM0-MVOLT-27K/30K/35K/40K/50K-90	
BE	SAME AS TYPE 'B' EXCEPT WITH EMERGENCY BATTERY BACKUP	25 W	LED	LED DRIVER WITH 0-10V DIMMING	ELITE LIGHTING #H44-LED-1000L/1500L/2000L-DIM0-MVOLT-27K/30K/35K/40K/50K-90	
C	6" LED CYLINDER FIXTURE, SURFACE MOUNTED	34 W	LED	LED DRIVER WITH 0-10V DIMMING	SBL #55C6-12-0F-UNV-935-35L-STD FINSH-12S-LD	
D	2" WIDE LINEAR PENDANT FIXTURE, CONFIRM FIXTURE LENGTH AND MOUNTING WITH ARCHITECT	21	LED	LED DRIVER WITH 0-10V DIMMING	FINELINE #HF2-P-ID-12"-B-V-835-TG-F-56LG-211-5C-FC-10%FAS0-CEILING TYPE-FE-5W	
DI	2" WIDE LINEAR PENDANT FIXTURE, CONFIRM FIXTURE LENGTH AND MOUNTING WITH ARCHITECT	28	LED	LED DRIVER WITH 0-10V DIMMING	FINELINE #HF2-P-ID-4"-B-V-835-TG-F-56LG-211-5C-FC-10%FAS0-CEILING TYPE-FE-5W	
E	DECORATIVE PENDANT MOUNTED SCHOOL HOUSE LIGHT	25 W	LED	LED DRIVER WITH 0-10V DIMMING	CAMMAN LIGHTING #F1000-14-LN	
G1	DECORATIVE LED RING FIXTURE, PENANT MOUNTED	49 W	LED	LED DRIVER WITH 0-10V DIMMING	CAMMAN LIGHTING #F1044-60-LD-35K-CLV-MV-UM-STD FINSH-ACM	
G2	DECORATIVE LED RING FIXTURE, PENANT MOUNTED	85 W	LED	LED DRIVER WITH 0-10V DIMMING	CAMMAN LIGHTING #F1044-60-LD-35K-CLV-MV-UM-STD FINSH-ACM	
G3	DECORATIVE ACOUSTIC PANEL	-	-	-	2' ACOUSTIC MODIFIED UNIT PEANDANT	SEE ARCHITECTURAL PLANS FOR ALL SPECIFICATIONS AND REQUIREMENTS
G4	DECORATIVE ACOUSTIC PANEL	-	-	-	3'-6" ACOUSTIC MODIFIED UNIT PEANDANT	SEE ARCHITECTURAL PLANS FOR ALL SPECIFICATIONS AND REQUIREMENTS
H	FLEXIBLE LED TAPE LIGHT IN SILICONE MOLD	4.5 W/FT	LED	LED DRIVER WITH 0-10V DIMMING	KELVIX #BWS30-LENGTH-35K-4Z-REED-0-10V-10' / 30W-CLP-AL-9R / ULV36-M	
J	SUSPENDED LED STRIP FIXTURE	36 W	LED	LED DRIVER WITH 0-10V DIMMING	ELITE #K-DEC-LED-3000L/4000L/5000L-DIM0-MVOLT-35K/40K/50K-85	
L	DECORATIVE LED VANTY FIXTURE IN RESTROOM	9 W	LED	LED DRIVER WITH 0-10V DIMMING	KUTZCO #GLOB0 UV301001	
M1/B1/2/3	LED UNDERCABINET LIGHTING (M1= 9" FIXTURE, M2=24" FIXTURE, M3= 36" FIXTURE)	4/10/14W	LED	LED DRIVER WITH 0-10V DIMMING	ELITE LIGHTING #EL-LED-1100L-DIM0-MVOLT-30K/35K/40K-85	
T	LED CUSTOM PENDANT FIXTURE	11 W	LED	LED DRIVER WITH TRIAC DIMMING	PRIMA LIGHTING #EDISON 1804N-STD FINSH	
X	LED EDGE-LIT EXIT SIGN GREEN LETTERS, CLEAR PANEL 1 OR MIRROR FOR 2 SIDE, UNIVERSAL MOUNTED, BRUSHED ALUMINUM TRIM PLATE, PUNCH OUT CHEVRONS, PROVIDE WITH 50 MIN. NCAD BATTERY BACKUP	1 W	LED	FIXED LED DRIVER	LITHONIA LIGHTING EDGR-X-GMR SERIES OR EQUAL BY EMERG-LITE, DUAL-LITE	
Z	EMERGENCY BATTERY PACK FLOODLIGHT, 50 MIN. NCAD BATTERY BACKUP, 3'-0" APF	2-12 W	LED	FIXED LED DRIVER	EMERGLITE #ECX-2 LITHONIA #6ELM2 SATELITES #CC1 FRESCOLITE #EDS4	
OA	EXTERIOR WALL MOUNTED EGRESS LIGHTING FIXTURE WITH INTEGRAL BATTERY PACK AND PHOTOCELL	31	LED	FIXED LED DRIVER	PERFORMANCE LIGHTING #6H2-31-STD FINSH-35K-UNV-0-10V (PROVIDE WITH BATTERY PACK FOR EMERGENCY LIGHTING AND INTEGRAL PHOTOCELL)	
OB	EXTERIOR RECESSED LED TAPE LIGHTING. PROVIDE WITH WET LOCATION 30W POWER SUPPLIES AS NECESSARY. COORDINATE MOUNTING WITH EXISTING BEAMS BEFORE ROUGH-IN BEGINS.	5.6 W/FT	LED	FIXED LED DRIVER	KELVIX #UN3-WL-0-1000-35K-24V-LENGTH-FML-2'-6" / CH-031-C-2-FR-0G-EC / HLV36	

NOTES:
1. CONFIRM VOLTAGE WITH DRAWINGS AND COORDINATE/CONFIRM ALL MOUNTING HEIGHTS AND FINISHES WITH ARCHITECT PRIOR TO ORDERING AND INSTALLATION.
2. PROVIDE MOUNTING OPTIONS NECESSARY TO ACCOMMODATE CEILING TYPES SPECIFIED BY ARCHITECTURAL DOCUMENTS FOR ALL RECESSED FIXTURES.
3. PROVIDE ALL HARDWARE AND ACCESSORIES TO INSTALL FIXTURES AS INDICATED IN FIXTURE DESCRIPTION.
4. MANUFACTURER PART NUMBERS MAY NOT NECESSARILY MATCH DESCRIPTION. OBTAIN CLARIFICATION IF A CONFLICT EXISTS BETWEEN DESCRIPTION AND MODEL NUMBER.
5. ALL LAMPS SHALL BE BY THE SAME MANUFACTURER. PROVIDE 5% (MINIMUM 10 LAMPS OF EACH TYPE) SPARE LAMP ATTIC STOCK FOR OWNER AT PROJECT COMPLETION.
6. MANUFACTURERS LISTED AS AN OR EQUAL DOES NOT GUARANTEE APPROVAL. FIXTURE PERFORMANCE MUST MEET OR EXCEED SPECIFIED FIXTURE.
7. ALL FIXTURES NOT SPECIFICALLY LISTED BY MODEL NUMBER REQUIRE A PRIOR APPROVAL SUBMITTAL IN WRITING. NO VERBAL APPROVALS WILL BE ALLOWED.
8. FIXTURES FURNISHED BY INTERIOR DESIGNER AND SHIPPED TO SITE, TO BE RECEIVED, STORED, AND INSTALLED BY GC. GC SHALL SUPPLY ALL LAMPS AND ACCESSORIES.
9. FIXTURE ALLOWANCE IS FOR FIXTURE AND SHIPPING COST TO THE JOBSITE ONLY. GC SHALL INCLUDE COST TO RECEIVE, STORE AND INSTALL FIXTURE. GC SHALL SUPPLY ALL LAMPS AND ACCESSORIES.



ELECTRICAL FLOOR PLAN - LEVEL 01
1/4" = 1'-0"
NORTH

ELECTRICAL KEY NOTES: (APPLY TO LIGHTING SHEET ONLY)

- ROUTE CIRCUIT THROUGH LIGHTING CONTROL PANEL FOR TIME CLOCK CONTROL.
- PROVIDE 2 ZONE DIGITAL CONTROL SWITCH FOR ON/OFF AND RAISE LOWER CONTROLS OF ZONES A1 & A2 (AGUTY INF00DA-SP-DX OR PRE-APPROVED EQUAL).
- PROVIDE 2 ZONE DIGITAL CONTROL SWITCH FOR ON/OFF AND RAISE LOWER CONTROLS OF ZONES A3 & A4 (AGUTY INF00DA-SP-DX OR PRE-APPROVED EQUAL).
- PROVIDE DIGITAL MASTER OVERRIDE CONTROL SWITCH TO TURN OFF ZONE A1-AS. (AGUTY INF00DA OR PRE-APPROVED EQUAL).
- PROVIDE DIGITAL DIMMING POWER PACK / ROOM CONTROLLER FOR CONTROL OF LIGHTING IN ZONES A1-A4. (AGUTY INF16-D OR PRE-APPROVED EQUAL).
- PROVIDE DIGITAL DIMMING POWER PACK / ROOM CONTROLLER FOR CONTROL OF LIGHTING IN CHILDREAN AREA.
- PROVIDE DIGITAL CONTROL SWITCH WITH ON/OFF AND RAISE LOWER CONTROLS FOR DAYCARE AREA LIGHTING.
- PROVIDE DIGITAL DIMMING POWER PACK / ROOM CONTROLLER FOR CONTROL OF LIGHTING IN ZONE A5. POWER PACK SHALL BE PROVIDED WITH 0-10V TO TRIAC DIMMING CONVERTER FOR CONTROL OF LED TAPE LIGHTING. (AGUTY INF16-D OR PRE-APPROVED EQUAL).
- EXTERIOR WALL PACK WITH INTEGRAL BATTERY PACK AND BUTTON TYPE PHOTOCELL FOR ON/OFF CONTROL.
- EMERGENCY EXIT SIGN TO BE CONNECTED TO UN-SWITCHED 'HOT' IN LIGHTING CIRCUIT SERVING THE AREA FOR 24H OPERATION. (TYPICAL FOR ALL TYPE 'X' FIXTURES.)
- PROVIDE 1 ZONE DIGITAL CONTROL SWITCH FOR ON/OFF AND RAISE LOWER CONTROLS OF ZONES A4 (AGUTY INF00DA-SP OR PRE-APPROVED EQUAL).