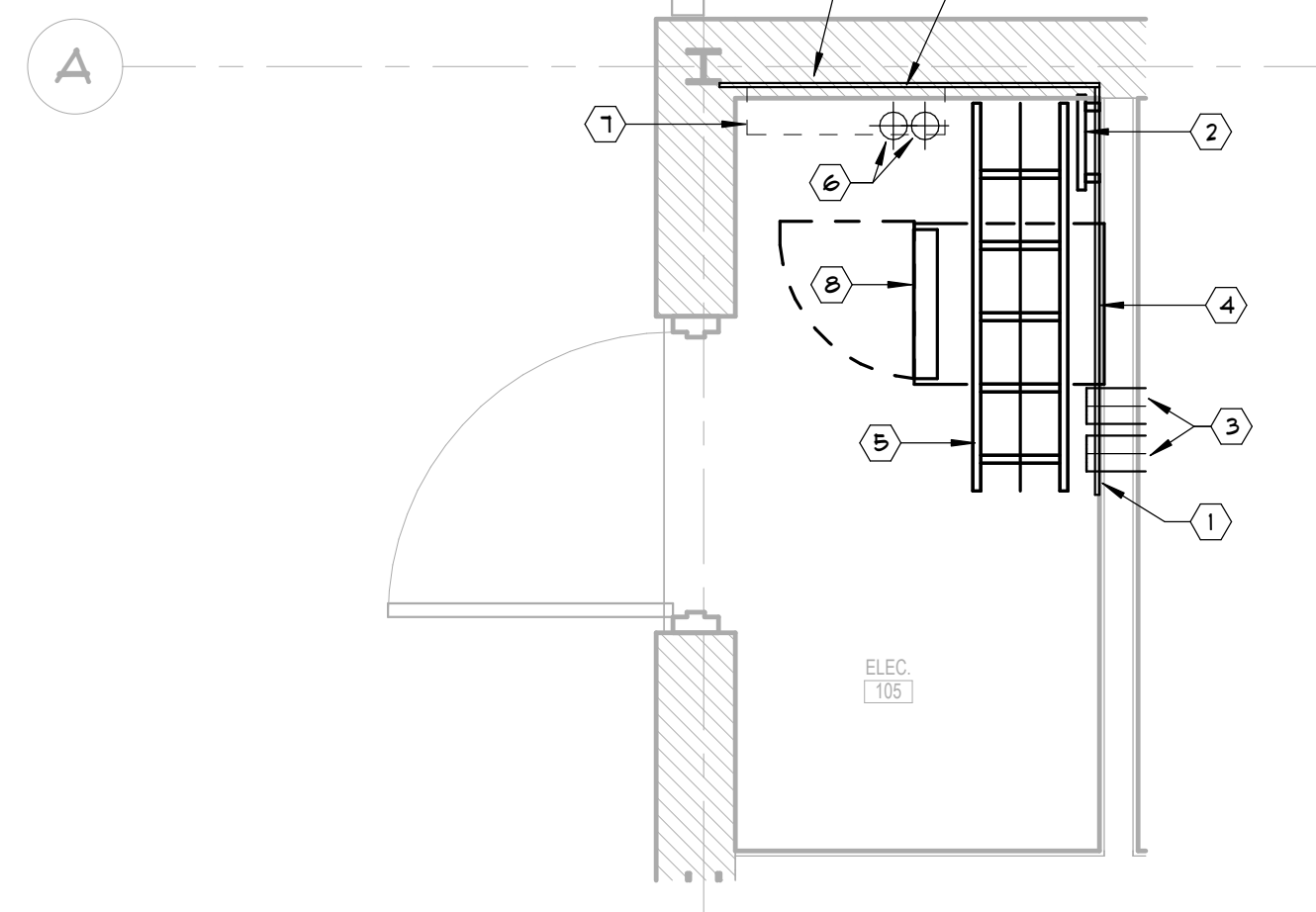


1 FIRST FLOOR PLAN - LOW VOLTAGE
 1/4" = 1'-0"
 NORTH



2 ENLARGED PLAN - ELEC 105
 1/2" = 1'-0"
 NORTH

- KEY NOTES:** (APPLIES TO VIEW 2 ONLY)
- GENERAL CONTRACTOR TO INSTALL 8" HIGH X 3/4" THICK PLYWOOD BACKBOARD ON INDICATED WALLS. PLACE BOTTOM OF BACKBOARD AT 12" AFF. PLYWOOD SHEETS SHALL BE COX GRADE AND BOTH SIDES AND ALL FOUR EDGES SHALL BE TREATED WITH TWO (2) COATS OF FIRE RETARDANT GREY PAINT.
 - ELECTRICAL CONTRACTOR SHALL PROVIDE MAIN TELECOM GROUNDING BUSBAR. REFERENCE ELECTRICAL DRAWINGS FOR ADDITIONAL INFORMATION.
 - ELECTRICAL CONTRACTOR TO PROVIDE 4" CONDUIT WALL SLEEVES AT LOCATIONS SHOWN. FIRESTOP PENETRATIONS AFTER CABLE INSTALLATION TO MATCH WALL RATING.
 - ELECTRICAL CONTRACTOR TO PROVIDE A 120V QUAD RECEPTACLE AT 84" AFF FOR WALL-MOUNTED EQUIPMENT. PROVIDE A DEDICATED 20A CIRCUIT ON STANDBY POWER FOR EACH RECEPTACLE. COORDINATE RECEPTACLE LOCATION WITH EQUIPMENT.
 - TELECOM CONTRACTOR TO PROVIDE 12" WIDE LADDER RACK CABLE TRAY AT 90" AFF.
 - ELECTRICAL CONTRACTOR TO PROVIDE TWO (2) - 3" CONDUITS FROM CABLE TRAY TO WEATHERHEADS AT ROOF. CONFIRM LOCATION WITH ARCHITECT BEFORE PENETRATING ROOF. SEE CONDUIT RISER FOR MORE DETAILS.
 - SPACE FOR WALL OR RACK MOUNT SECURITY EQUIPMENT PANELS OR SERVICE PROVIDER PANELS.
 - WALL-MOUNTED, SUNG-OUT TELECOM RACK. PROVIDE A MINIMUM OF 26 RACK SPACES AND 24" USEABLE DEPTH.

FULL CONDUIT SYSTEM REQUIRED IN OPEN OR NON ACCESSIBLE CEILING AREAS

GENERAL NOTES:

- ALL ITEMS AND CABLING INSTALLED WITHOUT CONDUIT AND ABOVE GRADE SHALL BE CMP (PLENUM RATED) AND LISTED FOR THE INTENDED USE.
- ALL CABLES ROUTED BELOW GRADE OR IN SLAB ON GRADE SHALL BE OUTSIDE PLANT RATED FOR WET ENVIRONMENTS. CONTRACTOR TO TRANSITION CABLE TO PLENUM RATED BEFORE CABLE ENTERS A CEILING SPACE.
- IN LOCATIONS WHERE CEILING SPACE IS NOT ACCESSIBLE, CABLES SHALL BE INSTALLED IN EMT CONDUIT HAVING A MINIMUM SIZE OF 3/4".
- WHERE EXPOSED, ALL CABLES SHALL BE PROTECTED BY STEEL CONDUIT OR BY A STEEL SURFACE MOUNT WIREWAY.
- INTERIOR CABLING SHALL BE SUPPORTED BY J-HOOKS ON 4'-0" CENTERS AND ROUTED IN A CONCEALED MANNER ABOVE ACCESSIBLE CEILING UNTIL REACHING THE NEAREST CABLE TRAY.
- ROUTE CABLING VIA DIRECT PATH SO THAT INSTALLED CABLE LENGTH DOES NOT EXCEED 90 METERS (295 FEET).
- TELECOM CONTRACTOR TO PROVIDE WALL SLEEVES AS REQUIRED FOR CABLE ROUTING. TELECOM CONTRACTOR TO PROVIDE FIRESTOPPING AFTER ALL CABLING HAS BEEN INSTALLED IN ORDER TO MAINTAIN WALL RATING.
- SPLICES IN CABLE RUNS ARE NOT PERMITTED. ALL LOW VOLTAGE CABLES TO BE ROUTED SPICE FREE. ROUTE ALL DEVICE CABLING TO NEAREST TELECOM ROOM UNLESS OTHERWISE NOTED.
- SEAL ALL BELOW GRADE CONDUITS ENTERING EQUIPMENT ROOM AFTER CABLES HAVE BEEN INSTALLED IN ORDER TO PREVENT WATER FROM ENTERING EQUIPMENT ROOM.
- SECURITY CONTRACTOR TO INTERFACE DOOR POSITION SWITCH AND REQUEST TO EXIT SIGNAL TO ACCESS CONTROL SYSTEM FOR MONITORING.
- CEILING-MOUNTED DATA OUTLETS ARE RESERVED FOR WIRELESS ACCESS POINTS UNLESS NOTED OTHERWISE.

KEY NOTES: (APPLIES TO VIEW 1 ONLY)

- DATA OUTLET FOR PRINTER.
- DATA OUTLET INSTALLED IN VERTICAL FRONT OF BENCH SEAT MILLWORK. COORDINATE EXACT LOCATION WITH ARCHITECT.
- DATA DROP FOR DEDICATED WIRELESS ACCESS POINT TO SERVE MOBILE DISPLAY ON CART.
- SEE ELECTRICAL DRAWINGS FOR SPECIFICATION OF SHARED FLOOR BOX.
- PROVIDE 1-GANG JUNCTION BOX AT 18" AFF WITH ONE (1) - 3/4" CONDUIT TO IT ROOM FOR DURESS BUTTON WIRING. PROVIDE GROUHEIT FACEPLATE.
- DURESS BUTTON MOUNTED UNDER DESK. PROVIDE REMOTE DIALER IN IT ROOM TO CALL 311 WHEN DURESS BUTTON IS PRESSED.
- PROVIDE ONE (1) - 2" CONDUIT THROUGH WALL FOR TELECOM SERVICE CABLING. TURN CONDUIT UP ALONG WALL WITH LB FITTING AND PROVIDE WEATHERHEAD AT END OF CONDUIT.
- DATA OUTLET FOR EXTERIOR WIRELESS ACCESS POINT AT 10" ABOVE GRADE. SEE UFI DETAILS SHEET FOR INSTALLATION REQUIREMENTS.
- DATA OUTLET FOR MOBILE DISPLAY ON CART.
- PROVIDE 4" SQUARE JUNCTION BOX AT 48" TO TOP WITH ONE (1) 3/4" CONDUIT TO TELECOM ROOM FOR INTRUSION DETECTION SYSTEM KEYPAD.