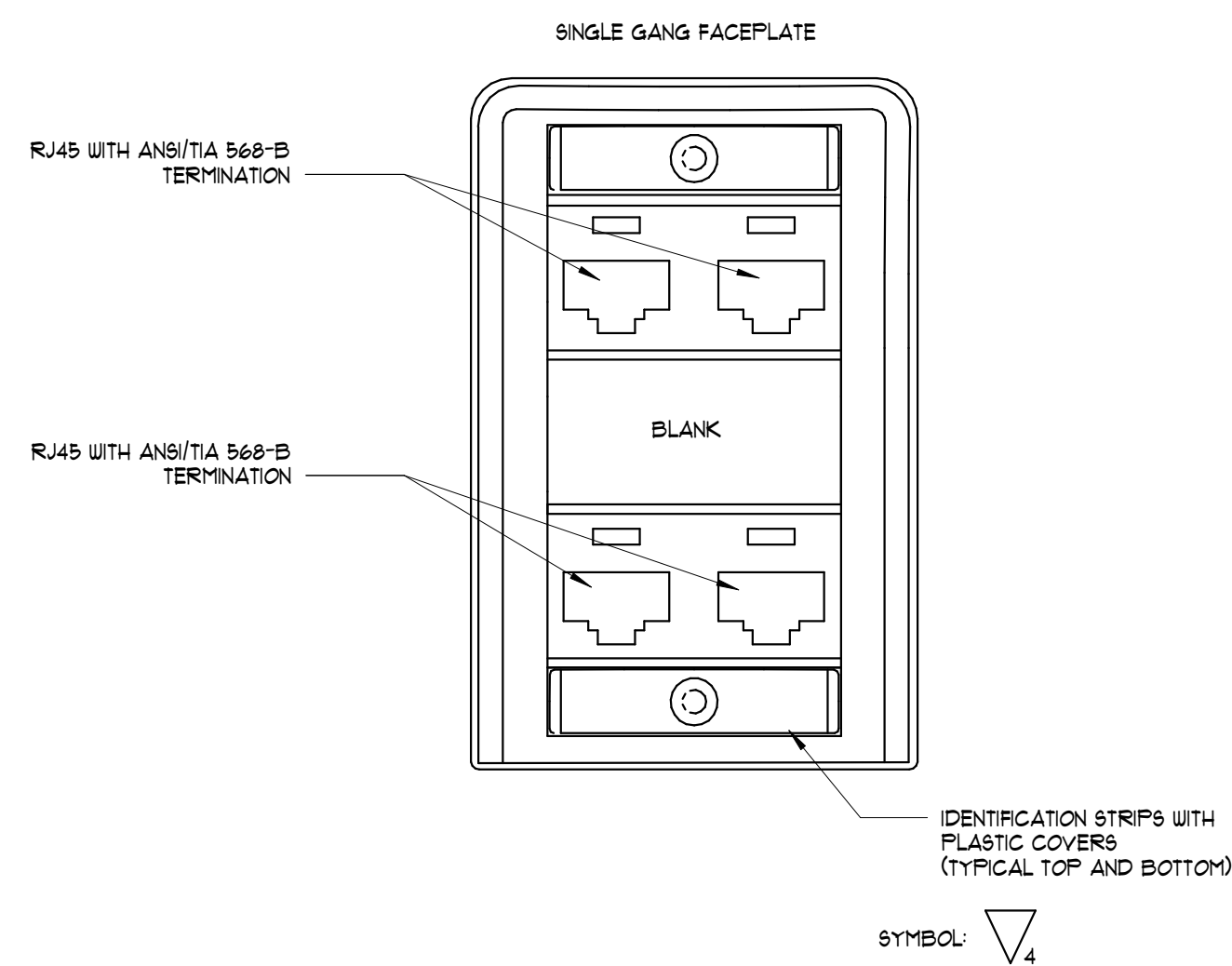
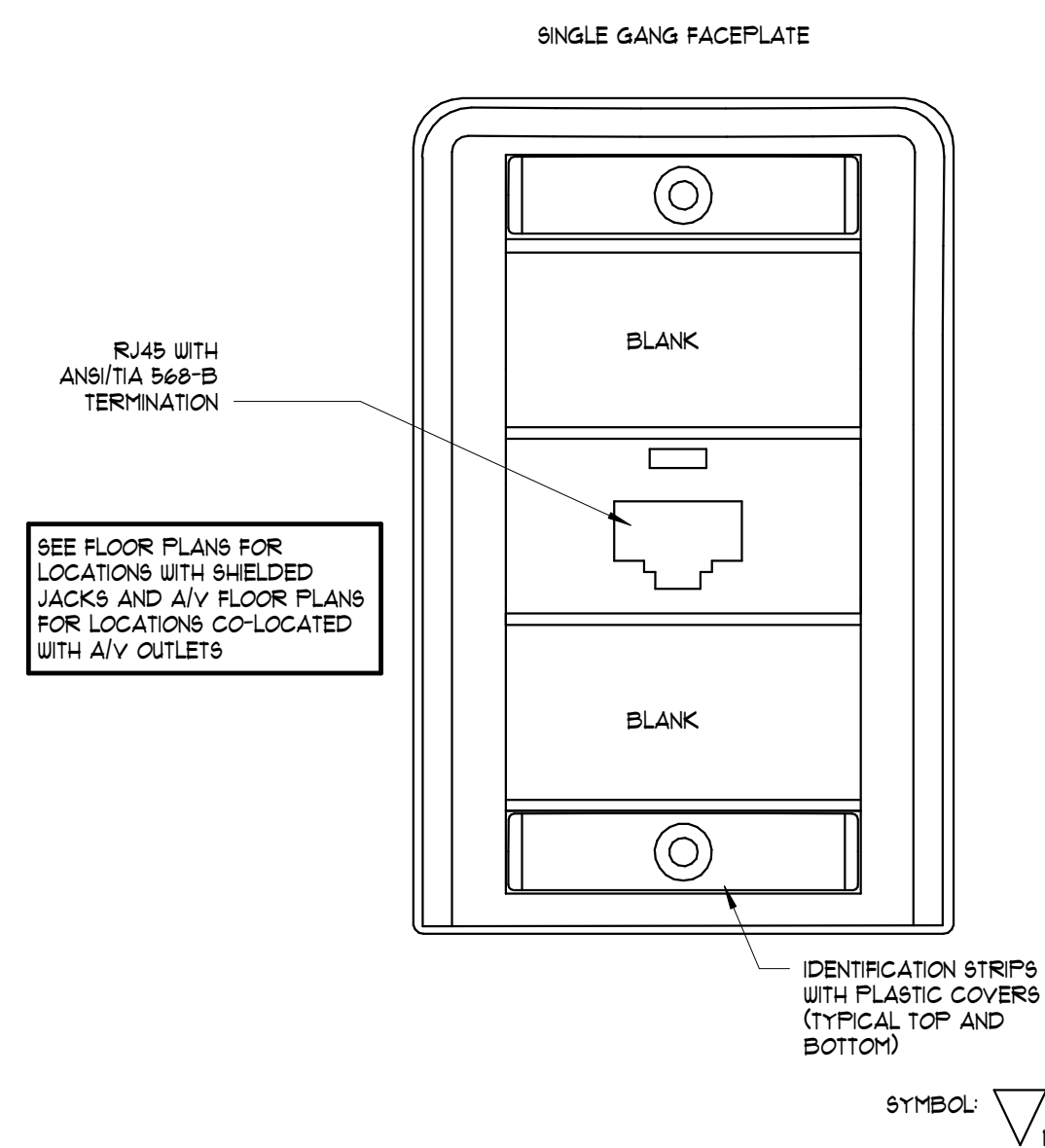


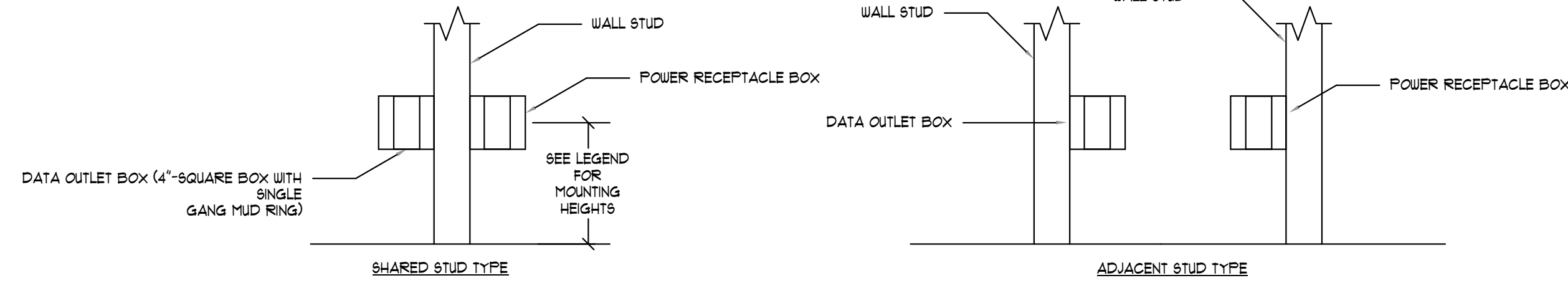
8 STRUCTURED CABLE - TYPICAL 2-PORT OUTLET
NOT TO SCALE



9 STRUCTURED CABLE - TYPICAL 4-PORT OUTLET
NOT TO SCALE



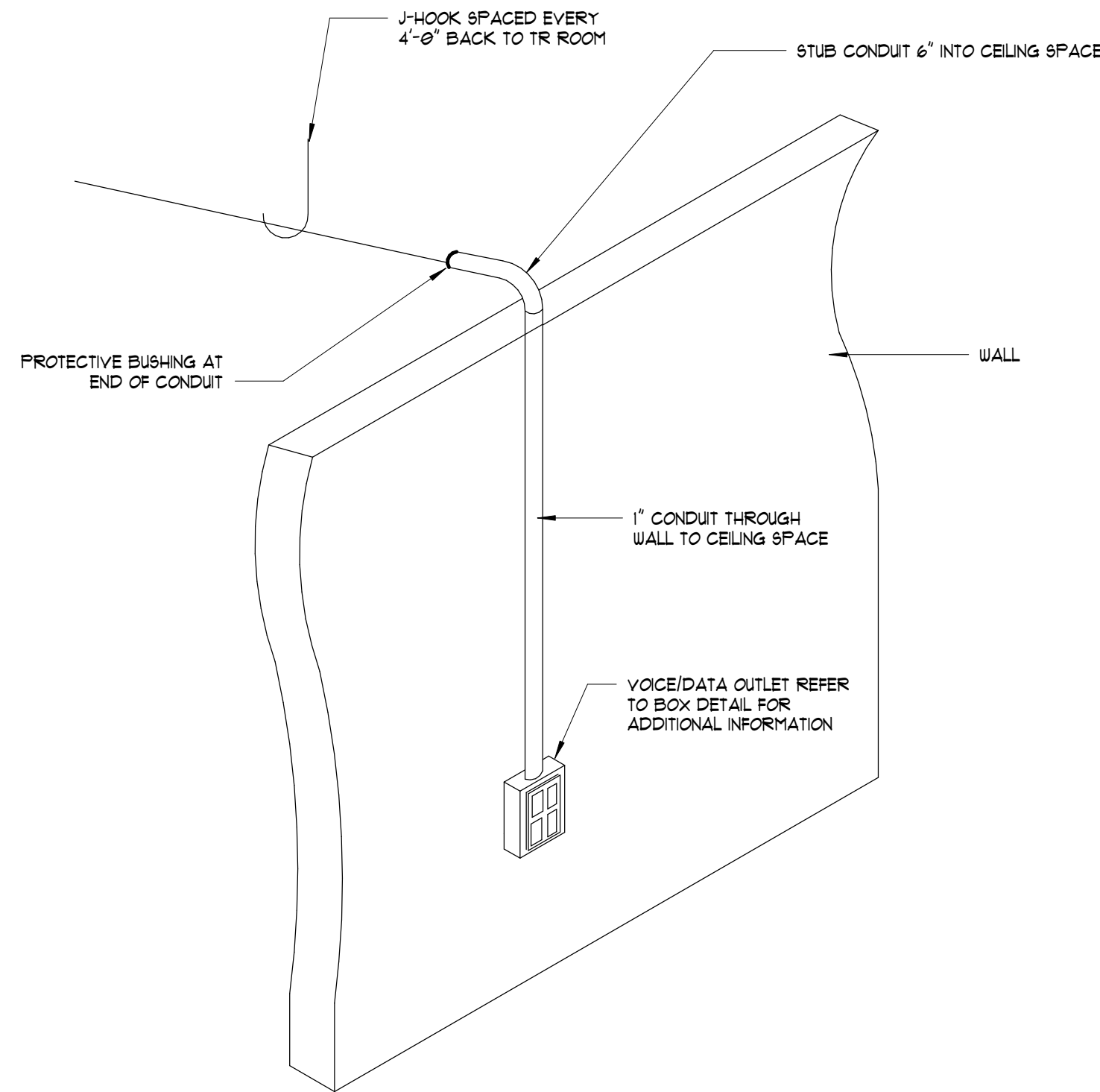
7 STRUCTURED CABLE - TYPICAL 1-PORT OUTLET
NOT TO SCALE



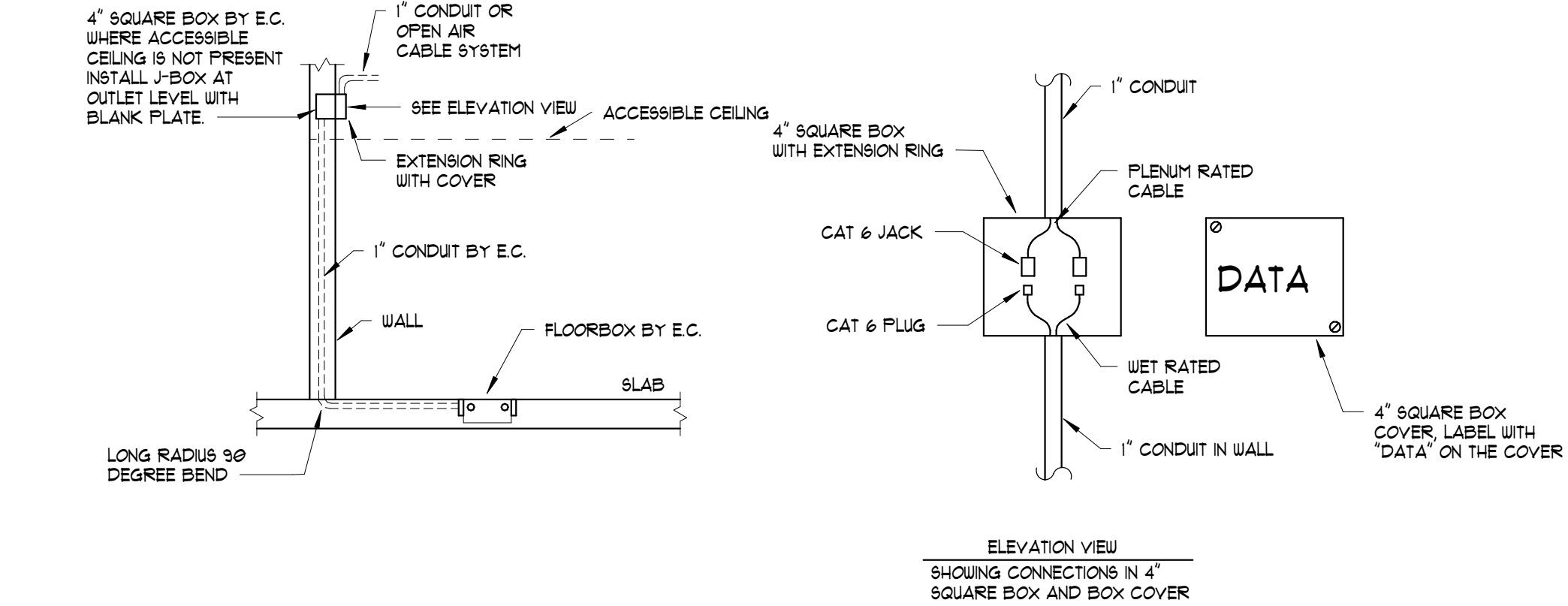
NOTES (THIS DETAIL ONLY)

1. ALL DATA OUTLETS TO BE COORDINATED WITH ELECTRICAL POWER RECEPTACLE LOCATIONS. DATA OUTLETS SHALL BE MOUNTED AT SAME HEIGHT AS POWER RECEPTACLES.
2. TYPICAL DATA OUTLET HEIGHT SHALL BE 18" UNLESS OTHERWISE NOTED. COORDINATE EXACT MOUNTING HEIGHTS AND DEVICE ORIENTATION WITH ELECTRICAL AND ARCHITECTURAL PLANS.
3. DATA OUTLET SHALL BE MOUNTED ON OPPOSITE SIDE OF SHARED STUD AS POWER OR DATA SHALL BE MOUNTED ON ADJACENT STUD TO POWER RECEPTACLE WITHIN SAME STUD CAVITY.
4. CONTRACTOR TO VERIFY ALL DATA OUTLETS TO BE PROVIDED WITH ADJACENT POWER RECEPTACLES.
5. WHEN OUTLETS ARE INSTALLED IN THE SAME STUD BAY TO SEPARATE ROOMS, PROVIDE A PUTTY PAD AROUND THE OUTLET BOXES.

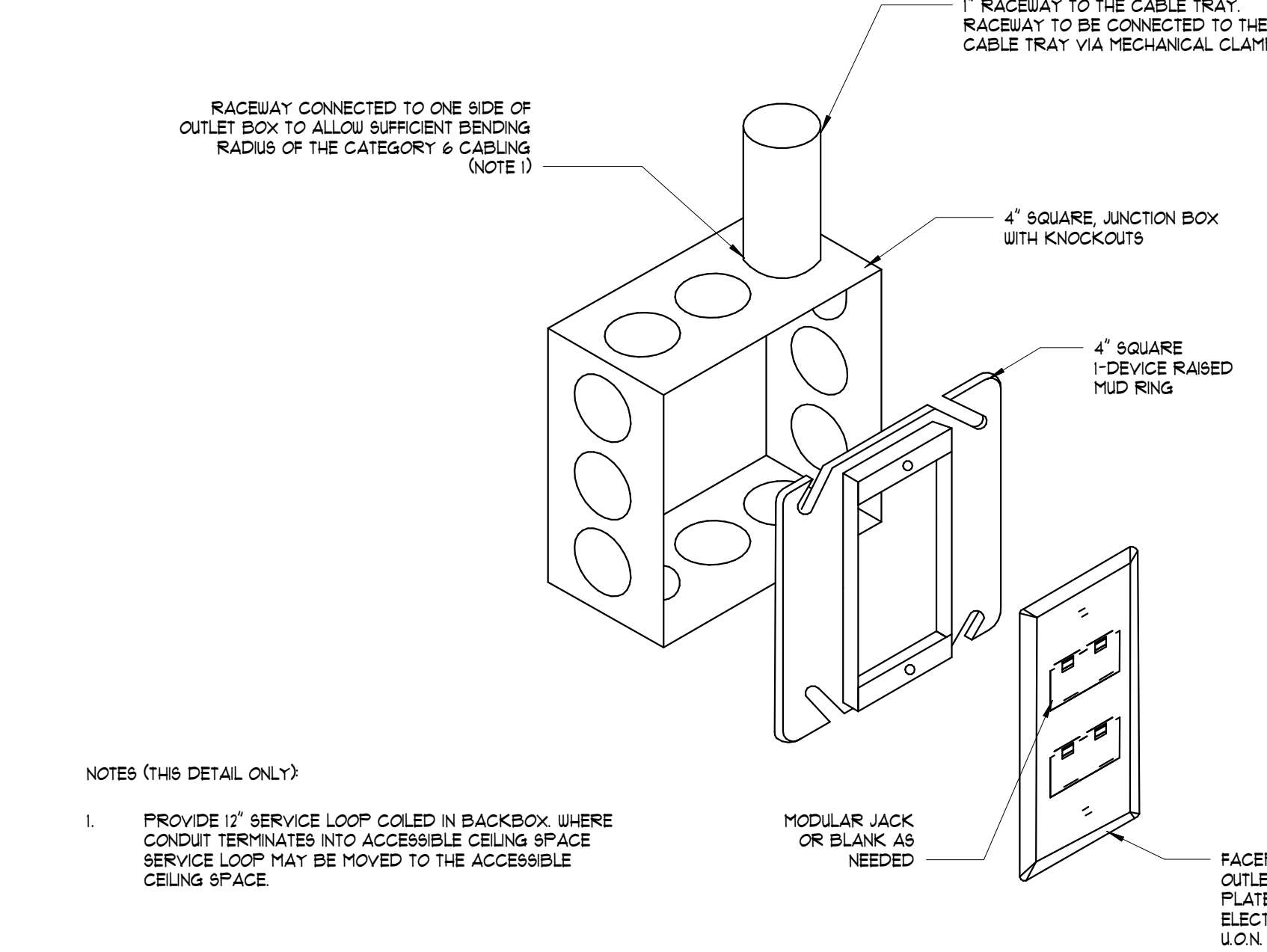
4 TELECOM DETAIL - STRUCTURED CABLE - TELECOM OUTLET ROUGH-IN
NOT TO SCALE



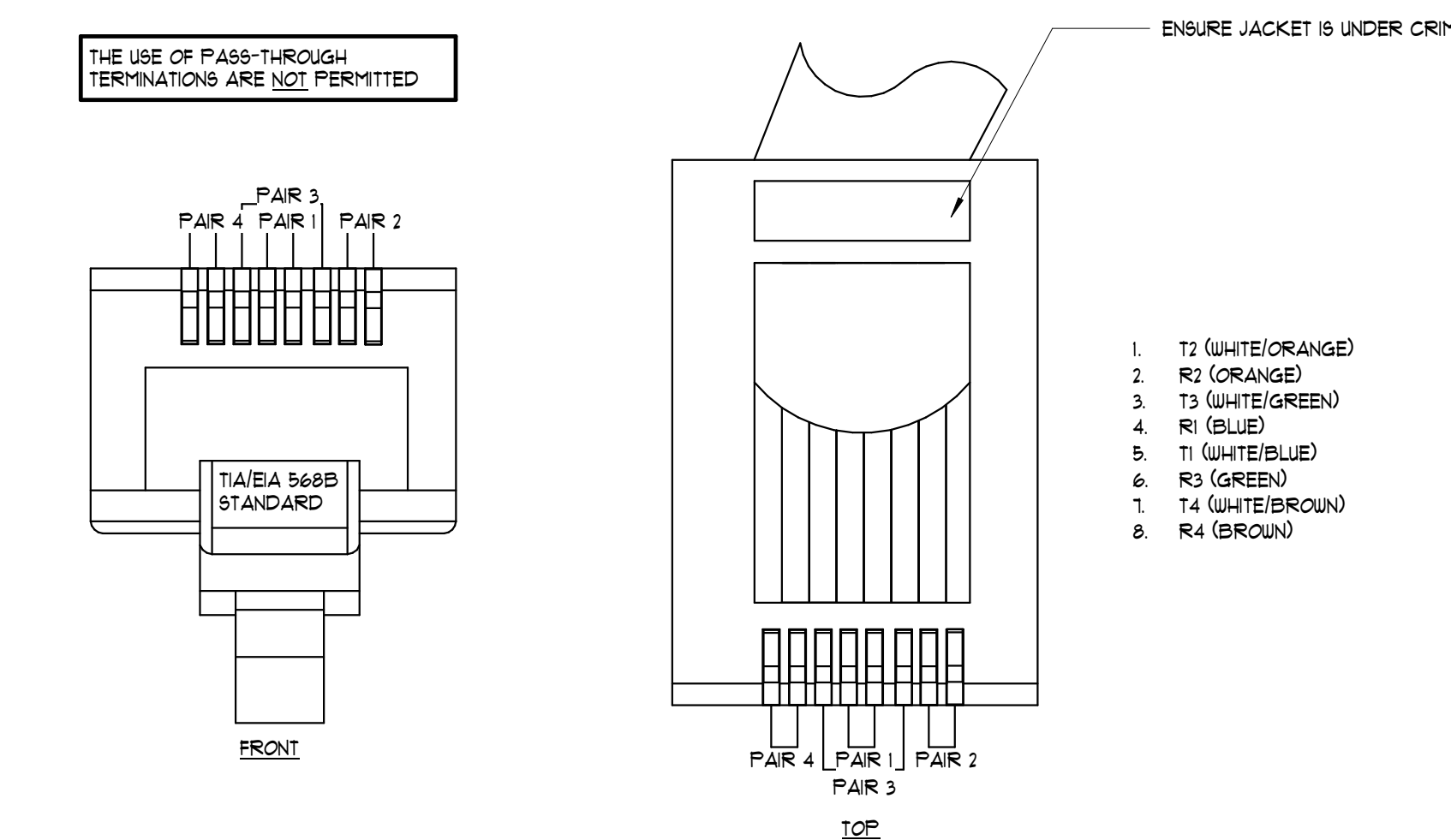
5 TELECOM DETAIL - STRUCTURED CABLE - TELECOMMUNICATION OUTLET
NOT TO SCALE



1 TELECOM DETAIL - STRUCTURED CABLE - CABLE TYPE TRANSITION BOX
NOT TO SCALE



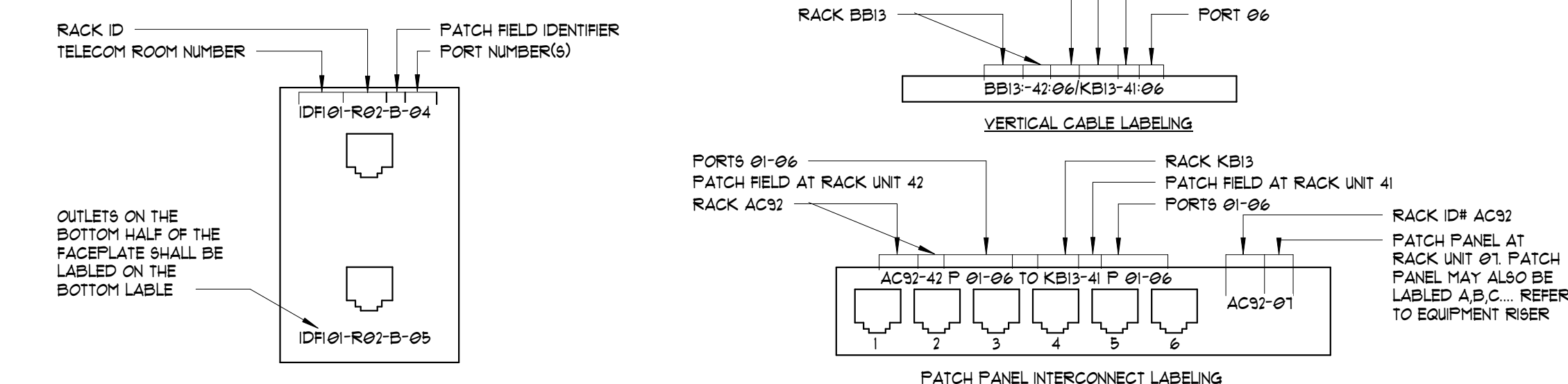
2 TELECOM DETAIL - STRUCTURED CABLE - TELECOM OUTLET BOX
NOT TO SCALE



3 TELECOM DETAIL - STRUCTURED CABLE - RJ45 TERMINATION
NOT TO SCALE

NOTES (THIS DETAIL ONLY)

- A. FURNISH AND INSTALL MACHINE GENERATED LABELS.
- B. LABEL ALL COPPER PATCH PANEL PORTS IN A HORIZONTAL FASHION LEFT TO RIGHT IN NUMERICAL SEQUENCE. PORTS SHALL BE LABELED BOTH FRONT AND BACK OF PORT.
- C. LABEL ALL RACKS AND CABINETS WITH A MINIMUM OF 3 ENGRAVED LABELS AFFIXED TO THE OUTSIDE OF THE ENCLOSURE.
- D. DISPLAY CABLE IDENTIFICATION NUMBER IN BLACK UPPERCASE LETTERING ON MACHINE GENERATED PERMANENT ADHESIVE SELF-LAMINATING LABEL OF CONTRASTING COLOR FROM CABLE SHEATH.
- E. A TOTAL OF THREE (3) LABELS PER HORIZONTAL CABLE ARE REQUIRED AT THE FOLLOWING INTERVALS: 6" FROM OUTLET, 18" FROM OUTLET, 18" FROM TERMINATION BLOCK/PATCH PANEL.
- F. TELECOM OUTLETS SHALL BE LABELED CLOCKWISE WITHIN A ROOM TYPICALLY STARTING AT THE OUTLET CLOSEST TO THE MAIN DOOR.



6 TELECOM DETAIL - STRUCTURED CABLE - LABELING
NOT TO SCALE

NO.	DATE	ISSUANCE / REVISIONS
1	03/20/2026	ISSUE FOR PERMIT AND BIDDING
2	03/20/2026	ISSUE FOR PERMIT AND BIDDING
3	03/20/2026	ISSUE FOR PERMIT AND BIDDING