



N/F
MOMA'S PROPERTIES INC
PARCEL ID: D19E 034
D.B. 3466, PG. 33

(PLAT) D.B. 307, PG. 170

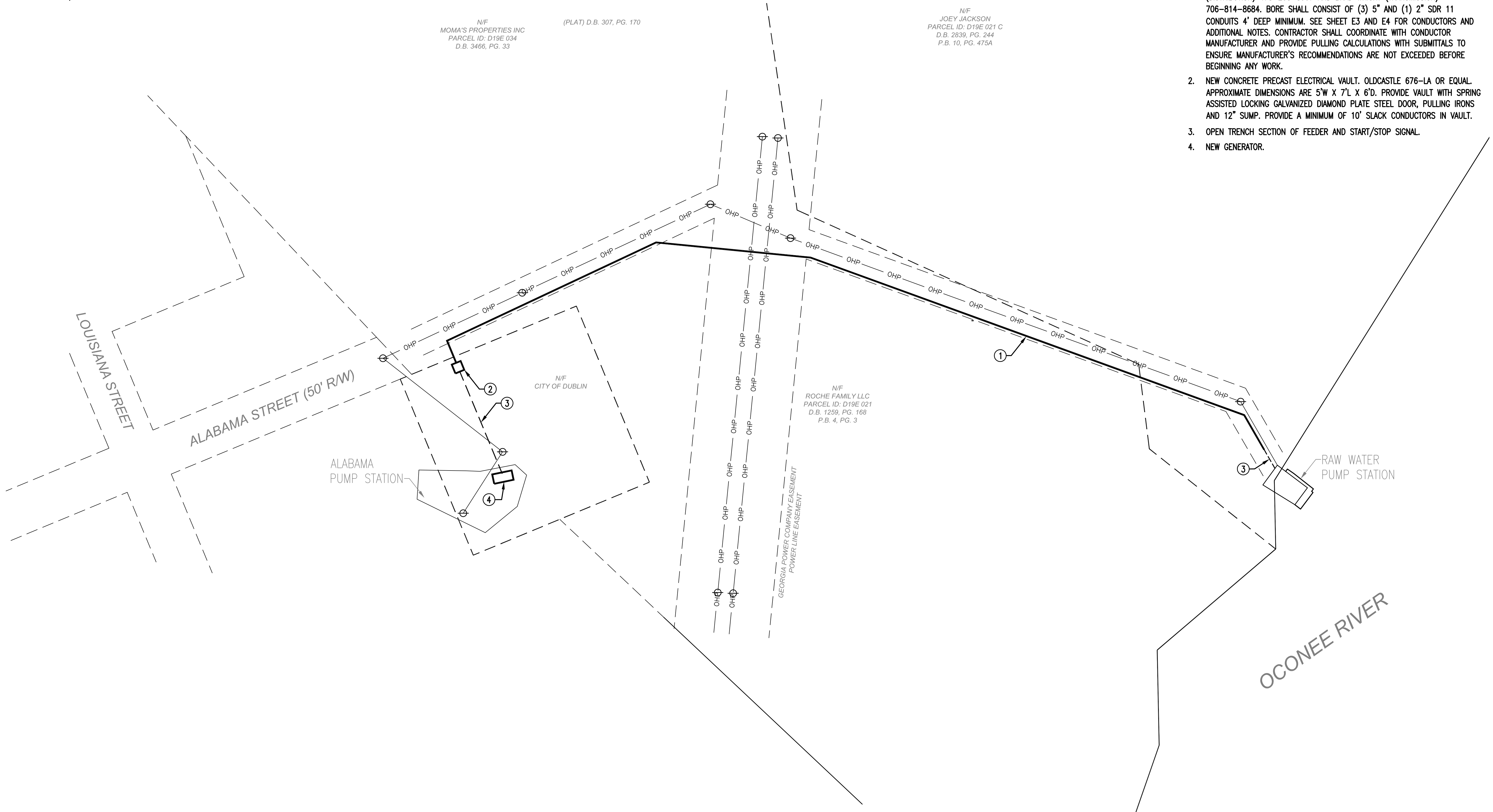
N/F
JOEY JACKSON
PARCEL ID: D19E 021 C
D.B. 2839, PG. 244
P.B. 10, PG. 475A

N/F
ROCHE FAMILY LLC
PARCEL ID: D19E 021
D.B. 1239, PG. 168
P.B. 4, PG. 3

GEORGIA POWER COMPANY EASEMENT
POWER LINE EASEMENT

NOTES:
(THIS SHEET ONLY)

- APPROXIMATE LOCATION OF PROPOSED DIRECTIONAL BORE FOR FEEDER AND START/STOP SIGNAL FROM RAW WATER PUMP STATION TO GENERATOR AT ALABAMA PUMP STATION. BORE SHALL BE INSTALLED ON EDGE OF GEORGIA POWER COMPANY (GPC) DISTRIBUTION EASEMENT AND ACROSS TRANSMISSION LINE AS INDICATED. CONTRACTOR SHALL FLAG PROPOSED ROUTE AND ARRANGE MEETING WITH GPC, CITY OF DUBLIN AND TOLAND MIZELL MOLNAR (TMM) FOR APPROVAL BEFORE BEGINNING WORK. GPC CONTACTS ARE MATT BOWEN (DISTRIBUTION) 478-208-8907 AND BRAD WRIGHT (TRANSMISSION) 706-814-8684. BORE SHALL CONSIST OF (3) 5" AND (1) 2" SDR 11 CONDUITS 4' DEEP MINIMUM. SEE SHEET E3 AND E4 FOR CONDUCTORS AND ADDITIONAL NOTES. CONTRACTOR SHALL COORDINATE WITH CONDUCTOR MANUFACTURER AND PROVIDE PULLING CALCULATIONS WITH SUBMITTALS TO ENSURE MANUFACTURER'S RECOMMENDATIONS ARE NOT EXCEEDED BEFORE BEGINNING ANY WORK.
- NEW CONCRETE PRECAST ELECTRICAL VAULT. OLDCASTLE 676-LA OR EQUAL. APPROXIMATE DIMENSIONS ARE 5'W X 7'L X 6'D. PROVIDE VAULT WITH SPRING ASSISTED LOCKING GALVANIZED DIAMOND PLATE STEEL DOOR, PULLING IRONS AND 12" SUMP. PROVIDE A MINIMUM OF 10' SLACK CONDUCTORS IN VAULT.
- OPEN TRENCH SECTION OF FEEDER AND START/STOP SIGNAL.
- NEW GENERATOR.

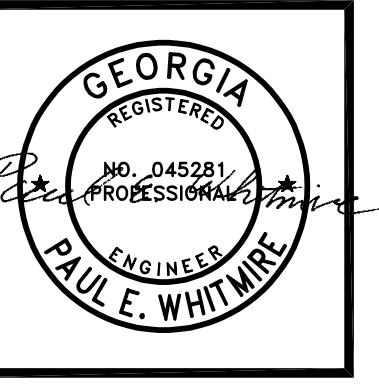


ELECTRICAL SITE PLAN - ALABAMA & RAW WATER PUMP STATIONS

SCALE: 1" = 50'-0"

SEE SHEET C1 FOR
SURVEYED SITE PLAN

REVISION	ITEM	DATE



SHEET:
**ELECTRICAL SITE PLAN -
ALABAMA & RAW WATER
PUMP STATIONS**

590 MEANS STREET NW
STE. 200
ATLANTA, GA 30318
**TOLAND
MIZELL
MOLNAR**

PROJECT:
**FIXED AND PORTABLE
GENERATOR
INSTALLATIONS**

JOB NO: TMM 2507
DATE: 02-06-26
DRAWN: FSD
CHECKED: PEW
APPROVED: RBP
SCALE: AS NOTED

SHEET
E5