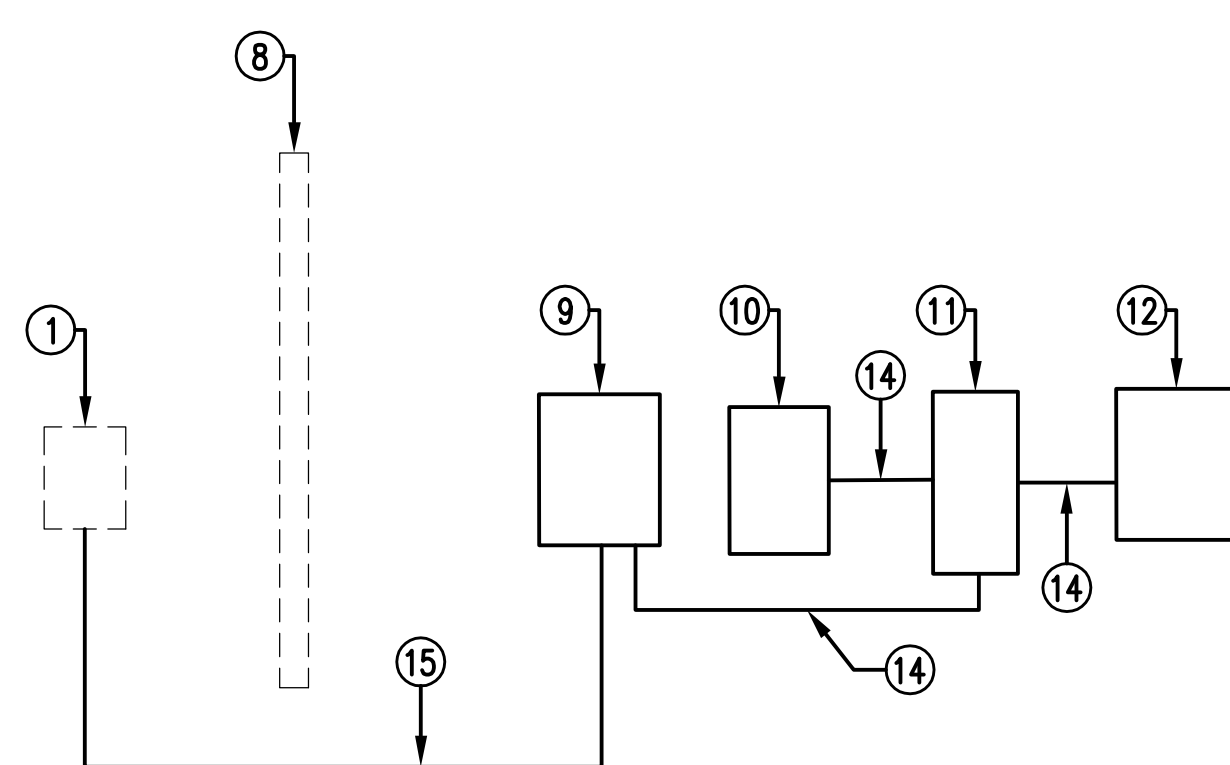
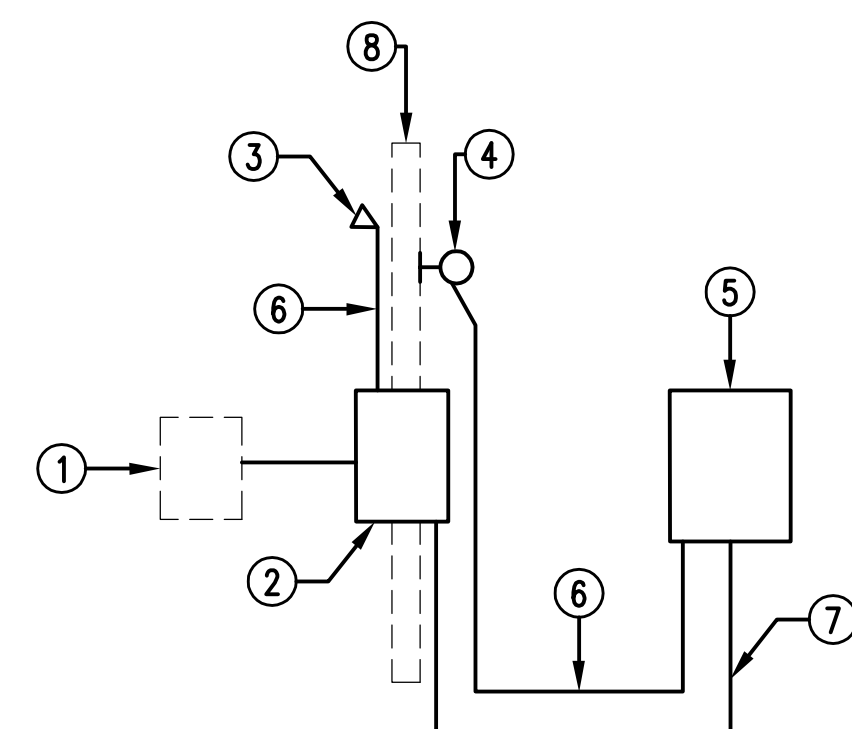
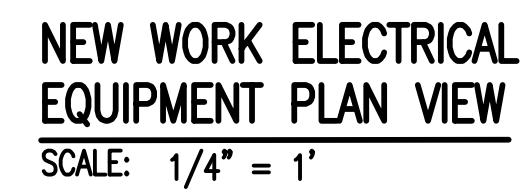
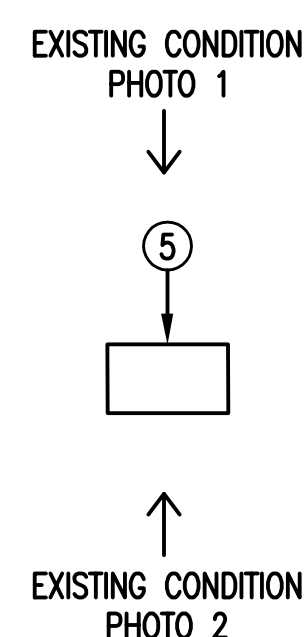
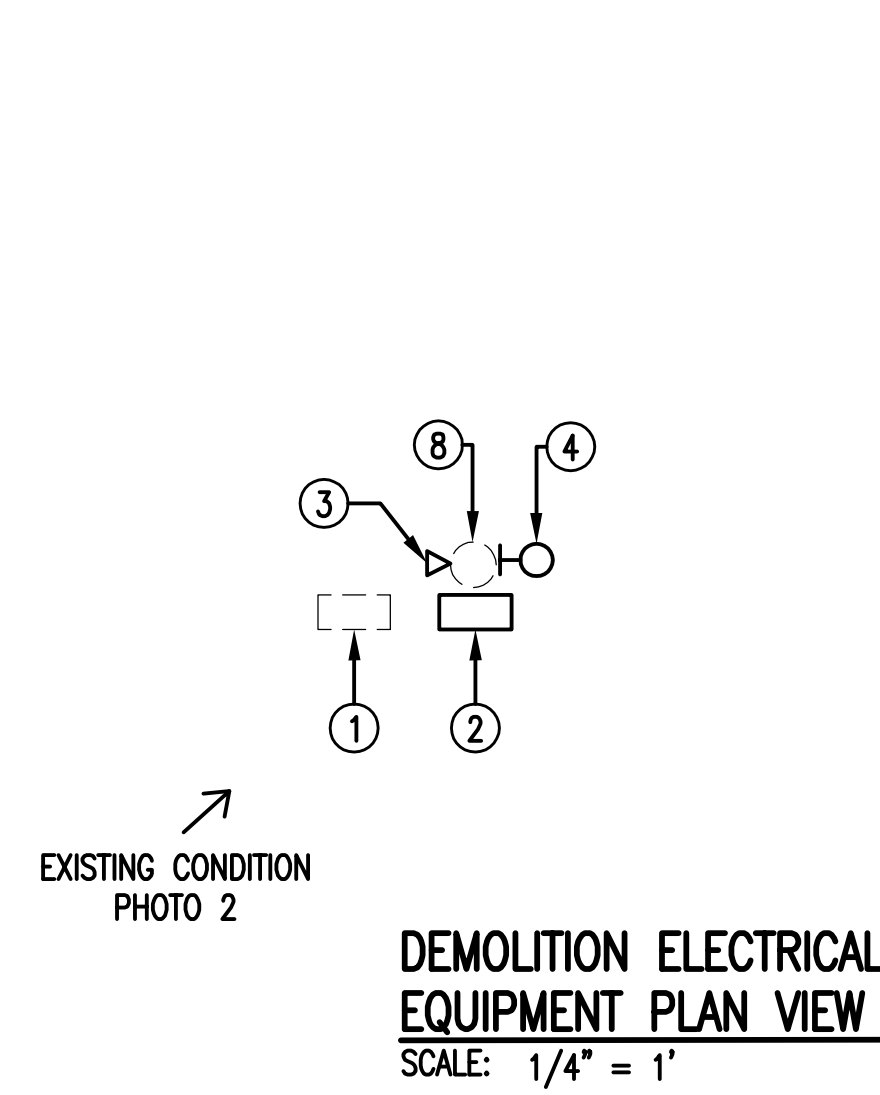


DEMOLITION & NEW WORK SITE PLAN

SCALE: 1/8" = 1'



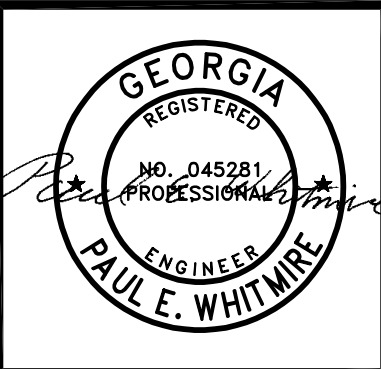
GENERAL NOTES:
 (THIS SHEET ONLY)

1. PROVIDE NEW PORTABLE GENERATOR FOR THIS SITE. SEE SCHEDULE IN SPECIFICATION SECTION 16310 PACKAGE ENGINE GENERATOR SYSTEMS, PARAGRAPH 1.5.

NOTES:
 (THIS SHEET ONLY)

1. EXISTING POWER COMPANY METER TO REMAIN.
2. EXISTING 240V, SINGLE-PHASE, 100A LOAD CENTER/SERVICE DISCONNECT TO BE REMOVED.
3. EXISTING ANTENNA CIRCUIT WEATHERHEAD AND ANTENNA TO BE REMOVED.
4. EXISTING PUMP STATION ALARM LIGHT TO BE REMOVED.
5. EXISTING PUMP STATION CONTROL PANEL TO BE REMOVED.
6. EXISTING 2#12, #12G; 1/2" C. TO BE REMOVED.
7. EXISTING 3#6; 1-1/2" C. TO BE REMOVED.
8. EXISTING WOOD POLE TO REMAIN.
9. NEW 60A/2P ENCLOSED CIRCUIT BREAKER SERVICE DISCONNECT IN NEMA 4X STAINLESS STEEL ENCLOSURE. PROVIDE #6 GROUNDING CONDUCTOR TO (3) 3/4" DIAMETER X 10' GROUND RODS NOT LESS THAN 10' APART.
10. NEW 60A MAIN BREAKER PUMP STATION CONTROL PANEL IN NEMA 4X STAINLESS STEEL ENCLOSURE TO REPLACE THE EXISTING FLYGT CONTROL MODEL F202, SERIAL NUMBER 052C1325312. INSTALL NEW CONTROL PANEL IN SAME LOCATION OF EXISTING CONTROL PANEL AND RECONNECT ALL PUMP MOTOR LOADS AND CONTROL CONDUCTORS. PUMP CONTROL PANEL SHALL BE PROVIDED WITH ONE 20A/1P BREAKER FOR PANEL MOUNTED RECEPTACLE, ONE 20A/1P BREAKER FOR EXTERIOR RECEPTACLE, BREAKER(S) FOR PORTABLE GENERATOR BATTERY CHARGER, COOLANT HEATER, JACKET HEATER, ETC. AS REQUIRED FOR PORTABLE GENERATOR, AND TWO 20A/1P BREAKERS SPARE. PROVIDE PANEL MOUNTED PUMP STATION ALARM LIGHT.
11. NEW 240V, 100A/2P DOUBLE THROW SWITCH IN NEMA 4X STAINLESS STEEL ENCLOSURE.
12. NEW PORTABLE GENERATOR CAM LOCK CONNECTION IN NEMA 4X STAINLESS STEEL ENCLOSURE. CONNECTION TO MATCH PORTABLE GENERATOR CABLES.
13. NEW 4" ALUMINUM CHANNEL EQUIPMENT SUPPORT STRUCTURE. PROVIDE A NEW CONCRETE PAD UNDER THE ENTIRE LENGTH OF THE SUPPORT STRUCTURE X 5' WIDE. NEW VERTICAL CHANNEL SHALL BE INSTALLED IN A FOOTING OF 12" DIAMETER X 18" DEEP, MINIMUM.
14. NEW 3#6, #10G; 1" C.
15. NEW 3#6; 1-1/2" C. UNDERGROUND.
16. EXISTING FENCE TO REMAIN.
17. NEW SURGE SUPPRESSOR. PROVIDE CONDUCTORS AND CONDUIT AS RECOMMENDED BY MANUFACTURER AND CONNECT TO SERVICE DISCONNECT
18. NEW 2#12, #12G; 1/2" C. TO PUMP CONTROL PANEL 20A/1P BREAKER.
19. HINGED NEMA 4X STAINLESS STEEL ENCLOSURE WITH 50' SOOW CABLE(S) AND PLUG(S) FOR PORTABLE GENERATOR BATTERY CHARGER, COOLANT HEATER, JACKET HEATER, ETC. AS REQUIRED BY PORTABLE GENERATOR. PLUG(S) SHALL MATCH RECEPTACLE(S) ON PORTABLE GENERATOR. HARDWIRE CABLE(S) TO PUMP CONTROL PANEL.

DATE	ITEM	REVISION



PROJECT: **DEMOLITION & NEW WORK PLANS - CARVER STREET PUMP STATION**

590 MEANS STREET NW
 STE. 200
 ATLANTA, GA 30318

TOLAND MIZELL MOLNAR

PROJECT: **FIXED AND PORTABLE GENERATOR INSTALLATIONS**

JOB NO: TMM 2507
 DATE: 02-06-26
 DRAWN: FSD
 CHECKED: PEW
 APPROVED: RBP
 SCALE: AS NOTED

SHEET **E9**