

PLUMBING FIXTURE REQUIREMENTS SCHEDULE

PLUMBING FIXTURE COUNT	AREA	LINEAR INCHES	CALCULATED OCCUPANT LOAD	ACTUAL OCCUPANT OVERRIDE	DESIGN OCCUPANT LOAD	WATER CLOSETS			LAVATORIES		BATHTUB / SHOWERS	DRINKING FOUNTAIN
						MALE		FEMALE	MALE	FEMALE		
						COUNT	URINAL COUNT	COUNT	COUNT	COUNT		
LEVEL 01												
10 - BUSINESS	926.80 SF	0"	25	0	25	0.50	0.25	0.50	0.31	0.31	0.00	0.25
27 - STORAGE	18,137.75 SF	0"	36	0	36	0.18	0.09	0.18	0.18	0.18	0.00	0.04
	19,064.55 SF		61	0	61	0.68	0.34	0.68	0.49	0.49	0.00	0.29

LIFE SAFETY LEGEND

EXIT TRAVEL DISTANCE

TOTAL TRAVEL DISTANCE: TD1: 100'-0"

DEAD END LENGTH: DE1: 100'-0"

EXIT DATA

- EXIT NUMBER
- STAIR EGRESS CAPACITY
- DOOR EGRESS CAPACITY

DOOR EGRESS WIDTH: 34"

EXIT LIGHT - SEE ELECTRICAL DRAWINGS

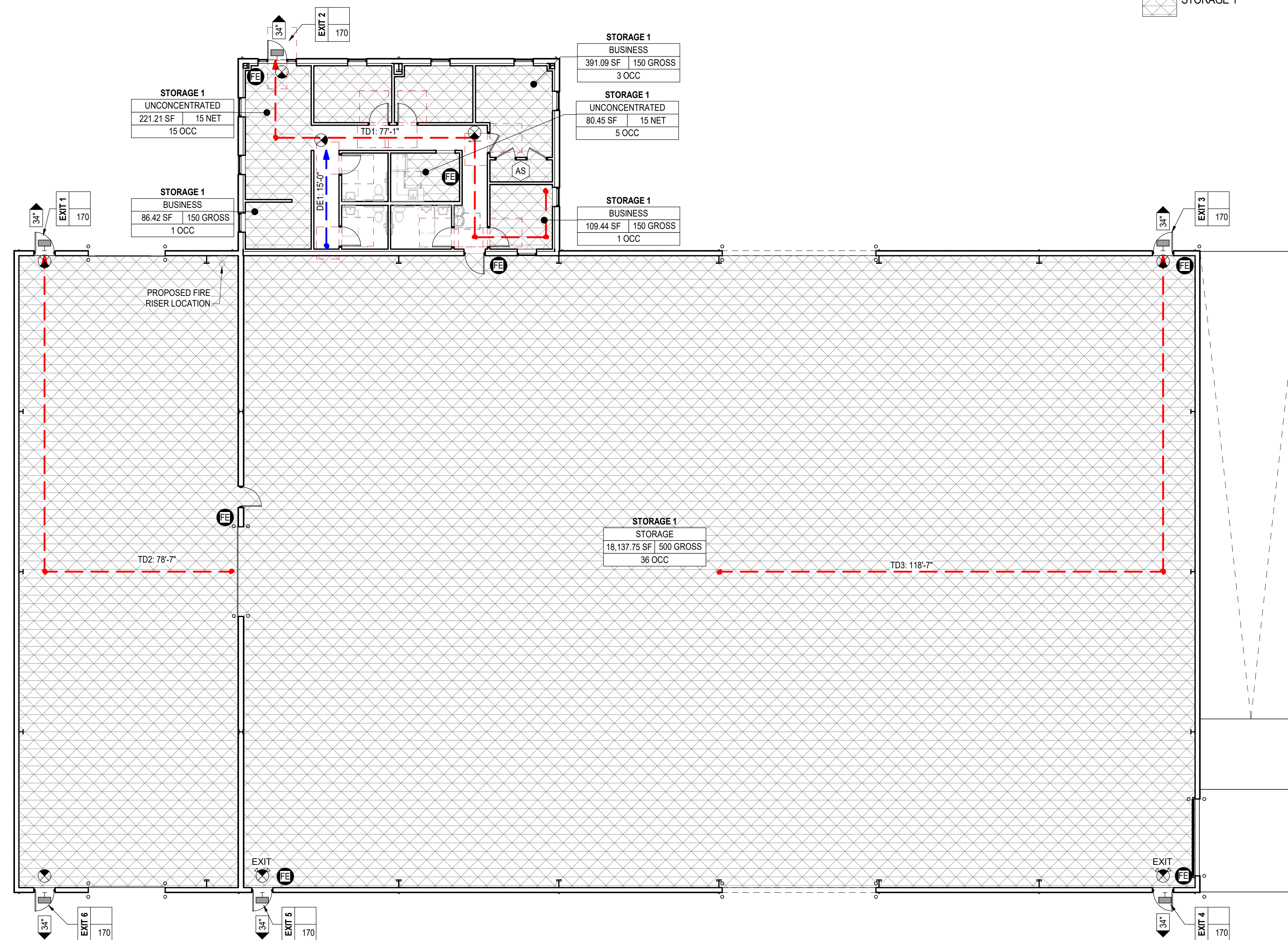
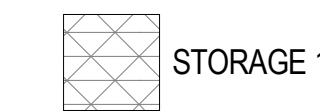
FIRE EXTINGUISHER

LED EXTERIOR EMERGENCY LIGHT @EXIT DOORS - SEE ELECTRICAL DRAWINGS

PLUMBING FIXTURE COUNT SCHEDULE:

MIN. REQ.	WATER CLOSETS		LAVATORIES		DRINKING FOUNTAINS	
	W.C. PROVIDED	URINALS PROVIDED	MIN. REQ.	PROVIDED	MIN. REQ.	PROVIDED
1	2	1	1	1	1	2

OCCUPANCY LEGEND



LIFE SAFETY KEYNOTES

AS
ACCESSORY STORAGE
NO SEPARATION: IBC 508.2.4

TRAVEL DISTANCE

NEW STORAGE OCCUPANCY [SPRINKLERED]
LSC CHAPTER 42, IBC CHAPTER 3
GROUP S-1 (STORAGE) OCCUPANCY

TRAVEL DISTANCE
400' MAX; LSC 42.2.6
COMMON PATH 100'; LSC 42.2.5
DEAD END LIMIT 100'; LSC 42.2.5

OCCUPANCY USE SCHEDULE

FUNCTION/USE	AREA	FACTOR	CALCULATED OCCUPANT LOAD	ACTUAL OCCUPANT OVERRIDE	DESIGN OCCUPANT LOAD
STORAGE 1 BUSINESS	391.09 SF	150 GROSS	3	0	3
BUSINESS	109.44 SF	150 GROSS	1	0	1
BUSINESS	86.42 SF	150 GROSS	1	0	1
STORAGE	38.19 SF	500 GROSS	0	0	0
STORAGE	18,137.75 SF	500 GROSS	36	0	36
UNCONCENTRATED	221.21 SF	15 NET	15	0	15
UNCONCENTRATED	80.45 SF	15 NET	5	0	5
TOTAL OCCUPANT LOAD	19,064.55 SF		61	0	61

EGRESS CAPACITY:

OCCUPANT TOTAL	NUMBER OF EXITS	HORIZONTAL: 0.2/OCC	STAIRWAY: 0.3/OCC
61	2	12'	205'



PROJECT NUMBER: 25-040

REVISIONS	NO.	DATE	ISSUE

DRYWALL WAREHOUSE HWY 81

257 HIGHWAY 81
OXFORD, GA 30054
WALTON COUNTY, GEORGIA

LIFE SAFETY PLAN

LS101

ISSUED FOR CONSTRUCTION

1 LIFE SAFETY PLAN
LS101 | 3/32" = 1'-0"