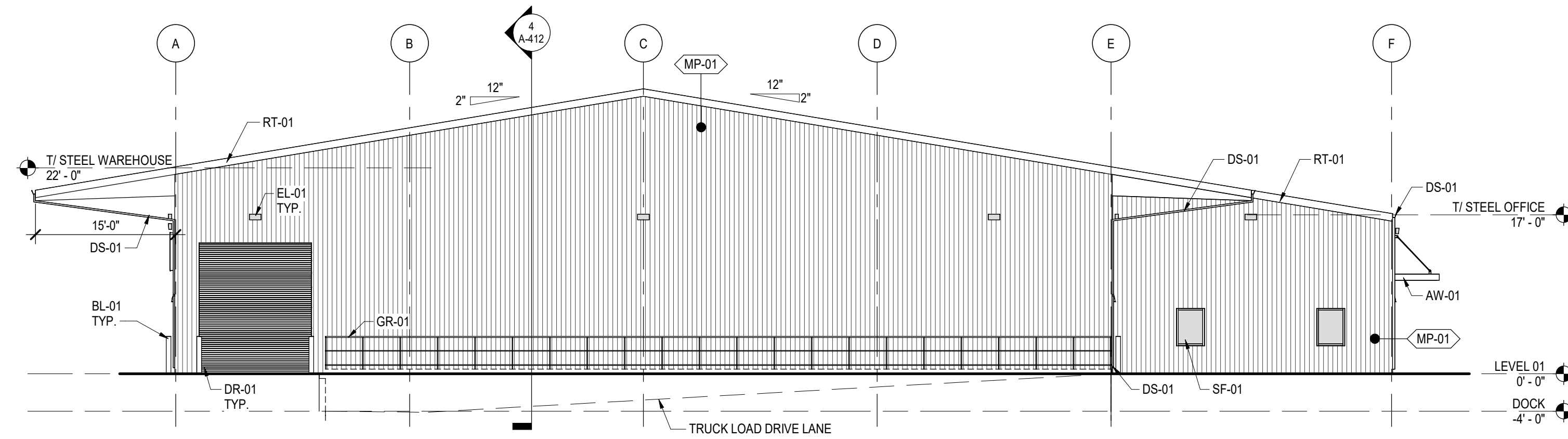
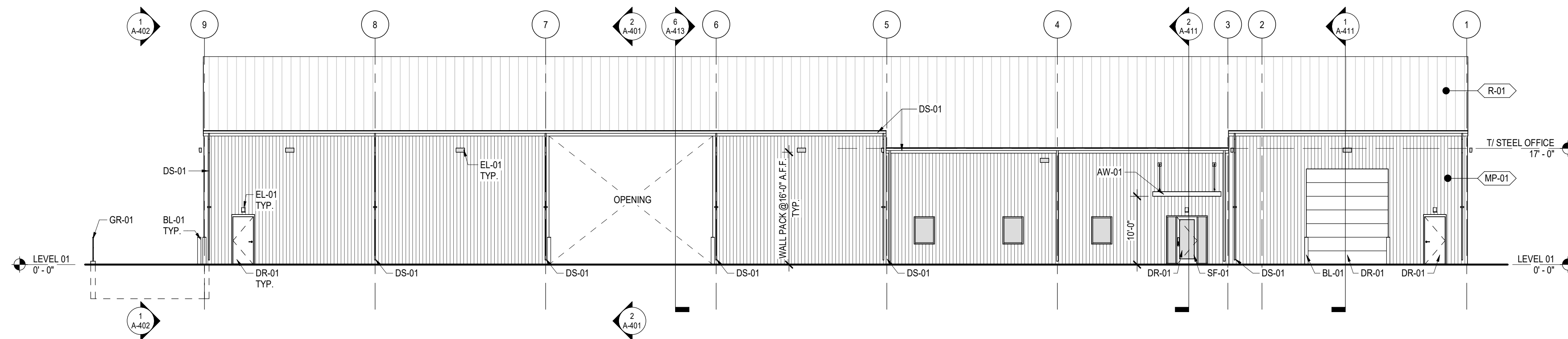


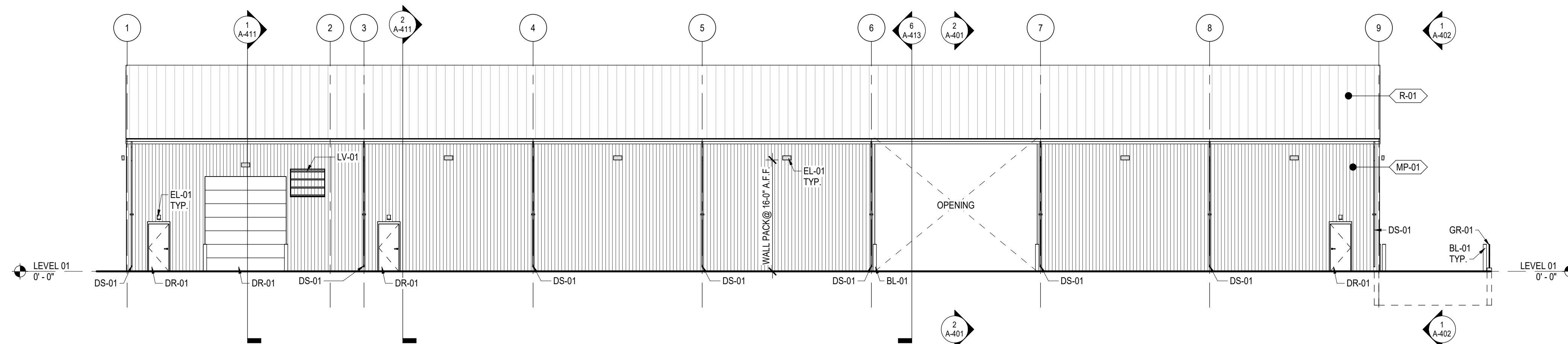
**4 SOUTH ELEVATION**  
A-301 | 3/32" = 1'-0"



**3 NORTH ELEVATION**  
A-301 | 3/32" = 1'-0"



**2 WEST ELEVATION**  
A-301 | 3/32" = 1'-0"



**1 EAST ELEVATION**  
A-301 | 3/32" = 1'-0"

**EXTERIOR FINISH LEGEND**

PATTERN	TAG	MATERIAL
	MP-01	PRE-FINISHED VERTICAL METAL WALL PANEL B.O.D.: PBR OR EQUAL
	R-01	24GA STANDING SEAM METAL ROOFING SYSTEM

**EXTERIOR FINISH KEYNOTES**

TAG	MATERIAL
AW-01	PRE-FABRICATED ALUMINUM TIE-ROD AWNING, PROVIDED BY PEMB SUPPLIER
BL-01	6" DIA. BOLLARD, PAINT TRAFFIC YELLOW
DR-01	EXTERIOR DOOR - SEE DOOR SCHEDULE
DS-01	PRE-FINISHED ALUMINUM DOWNSPOUT AND GUTTER BY PEMB, SURFACE DRAIN TO GRADE
EL-01	EXTERIOR LIGHT FIXTURE - SEE ELECTRICAL SCHEDULE
GR-01	42" HIGH GALVANIZED STEEL GUARDRAIL
LV-01	LOUVER, SEE MECHANICAL DRAWINGS
RT-01	PRE-FINISHED METAL RAKE TRIM, PROVIDED BY PEMB SUPPLIER
SF-01	EXTERIOR STOREFRONT SYSTEM - SEE STOREFRONT ELEVATION

**ELEVATION NOTES**

- COORDINATE BUILDING SIGNAGE LOCATIONS AND SIGNAGE WITH OWNER, REFER TO ELECTRICAL DRAWINGS FOR SCHEDULE AND LOCATION.
- MATERIAL MANUFACTURERS AND COLORS INDICATED ON DRAWINGS ARE SUBJECT TO CHANGE DURING THE CONSTRUCTION PROCESS. ANY DEVIATIONS FROM APPROVED PLANS SHALL BE SUBMITTED FOR APPROVAL.



PROJECT NUMBER: 25-040

REVISIONS	NO.	DATE	ISSUE

**DRYWALL WAREHOUSE HWY 81**  
257 HIGHWAY 81  
OXFORD, GA 30054  
WALTON COUNTY, GEORGIA

EXTERIOR ELEVATIONS

**A-301**  
ISSUED FOR CONSTRUCTION