

WALL SECTION KEYNOTES

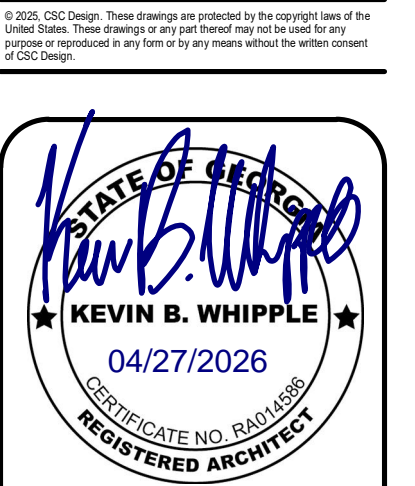
- 1.01 3 5/8" MTL. STUDS @ 16" O.C.
- 1.02 6" MTL. STUDS @ 16" O.C.
- 1.03 8" GIRT WALL, PROVIDED BY PEMB SUPPLIER
- 1.04 5/8" GYP. BOARD
- 1.11 FULL HEIGHT LINER PANEL @ WAREHOUSE SIDE TO STRUCTURE ABOVE, PROVIDED BY PEMB SUPPLIER
- 1.12 R-19 INSULATION
- 1.13 PBR OR EQUAL PANEL WALL SYSTEM, 26 GA FINISH AS SELECTED FROM MANUFACTURER STANDARD COLOR LINE - SEE ELEVATION
- 1.14 PRE-FABRICATED TIE ROD CANOPY, PROVIDE BLOCKING AS REQUIRED, PROVIDED BY PEMB SUPPLIER

- 2.01 PEMB MAIN FRAME - SEE PEMB DRAWINGS
- 2.02 8" Z-PURLINS - SEE PEMB DRAWINGS
- 2.03 RAKE TRIM, PROVIDED BY PEMB SUPPLIER
- 2.04 GUTTER AND DOWNSPOUTS, TYP; PROVIDED BY PEMB SUPPLIER
- 2.05 THERMAL BLOCKS AND R-19 + R-19 DOUBLE LAYER INSULATION, PROVIDED BY PEMB SUPPLIER
- 2.11 STANDING SEAM METAL ROOF, PROVIDED BY PEMB SUPPLIER

- 3.01 6" @ WAREHOUSE AND 4" @ OFFICE CONC. SLAB ON GRADE - SEE STRUCTURAL DRAWINGS
- 3.02 CONCRETE FOUNDATION / FOOTING WITH VAPOR BARRIER, SEE STRUCTURAL DRAWINGS
- 3.03 SCHEDULED FLOORING
- 3.04 6" DIA. PIPE BOLLARD, TYP; PAINT TRAFFIC YELLOW - SEE STRUCTURAL DRAWINGS
- 3.05 POURED CONCRETE WALL @ DOCK LEVEL - SEE STRUCTURAL DRAWINGS
- 3.06 EXTERIOR PAVING, SEE CIVIL DRAWINGS

- 4.01 SCHEDULED DOOR
- 4.02 SCHEDULED WINDOW
- 4.03 SCHEDULED STOREFRONT SYSTEM
- 4.04 WALL OPENING TO STRUCTURE ABOVE
- 4.05 8" GIRT WALL BEYOND

- 5.01 SCHEDULED CEILING W/ R-19 SOUND BATT INSULATION ABOVE
- 5.02 SCHEDULED LIGHT FIXTURE - SEE ELECTRICAL DRAWINGS

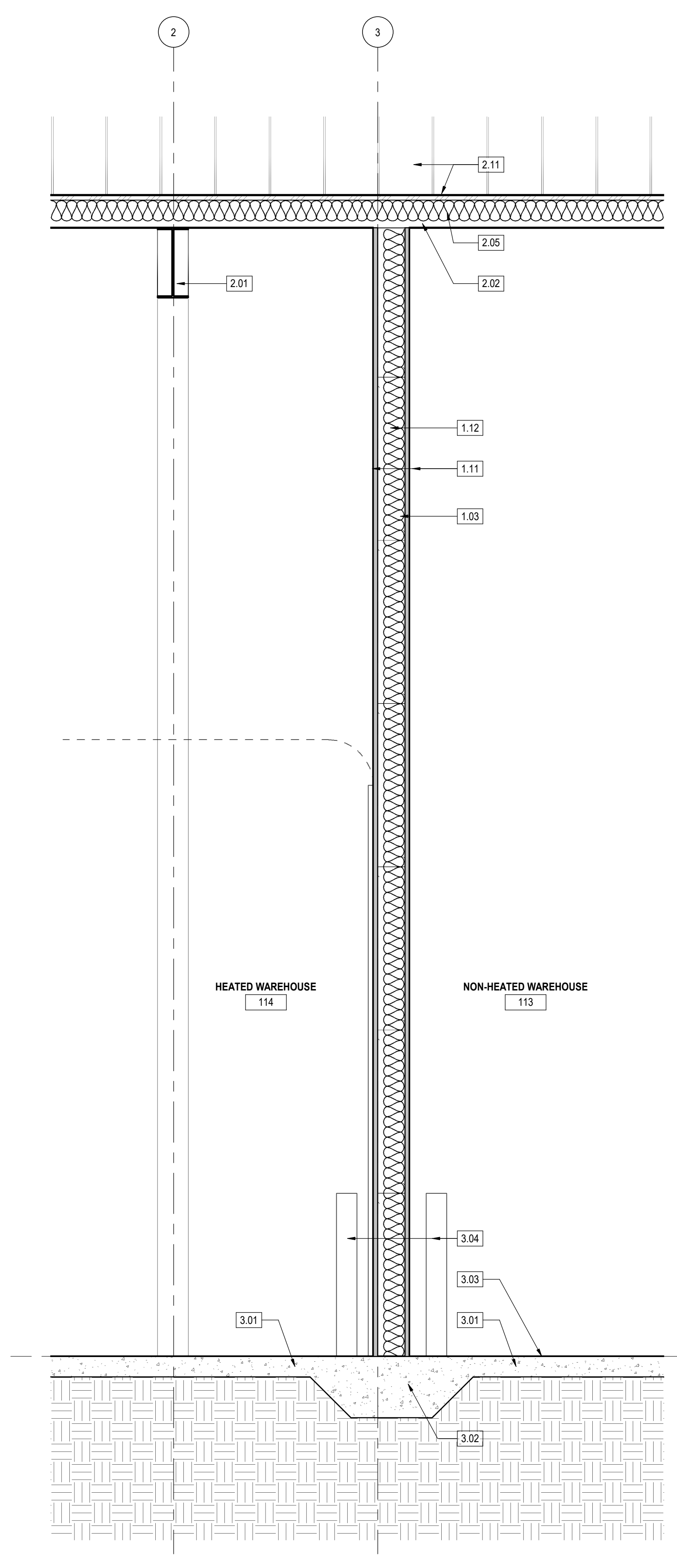


PROJECT NUMBER: 25-040

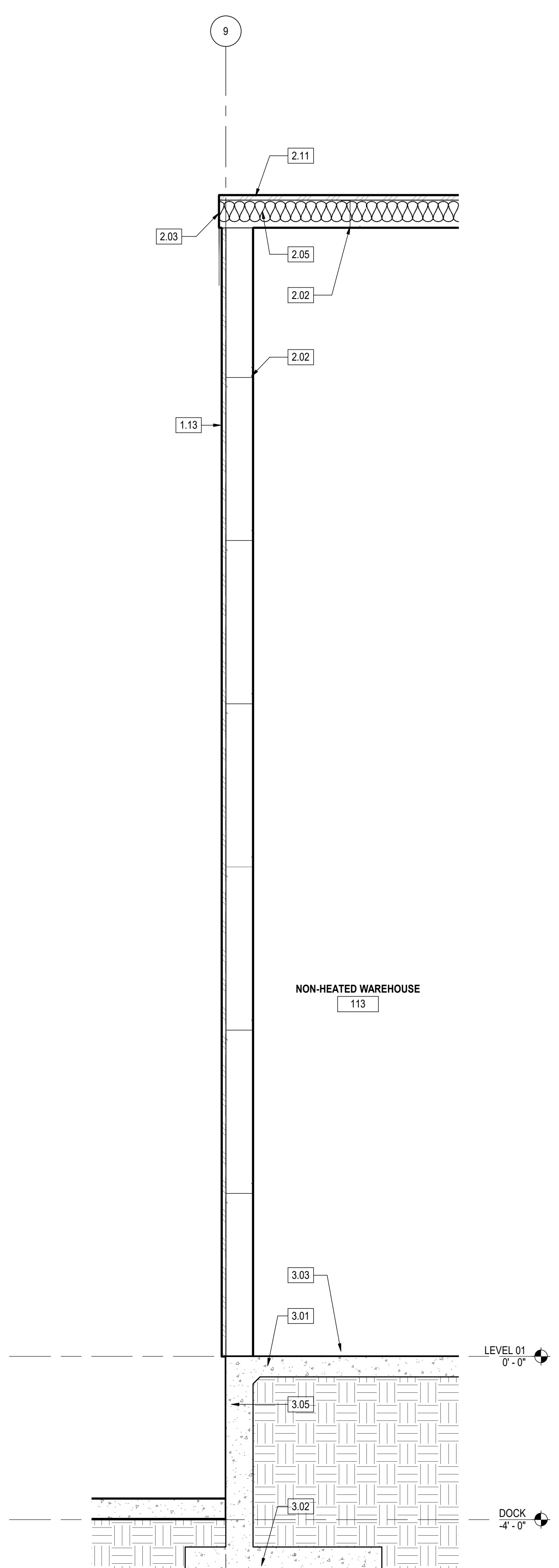
REVISIONS	NO.	DATE	ISSUE

DRYWALL WAREHOUSE HWY 81
 257 HIGHWAY 81
 OXFORD, GA 30054
 WALTON COUNTY, GEORGIA

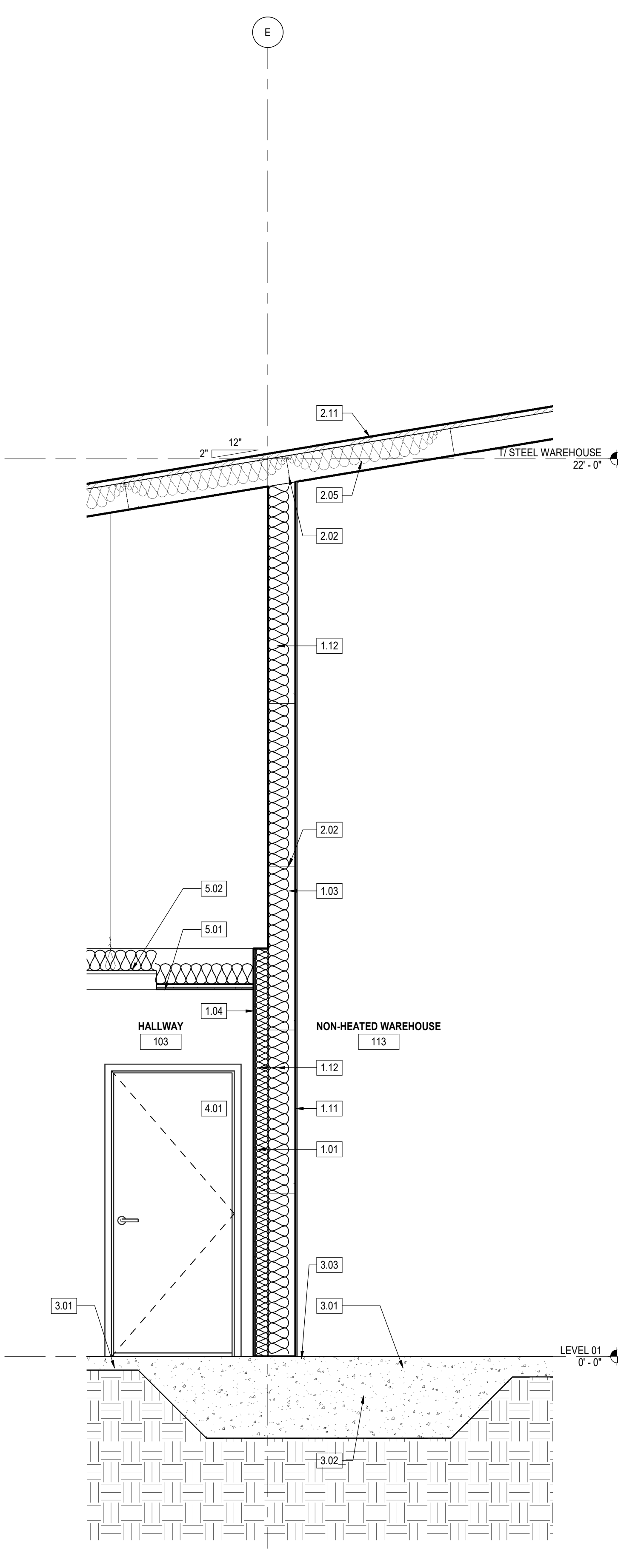
WALL SECTIONS
A-412
 ISSUED FOR CONSTRUCTION



5 WALL SECTION 5
 A-412 | 1/2" = 1'-0"



4 WALL SECTION 4
 A-412 | 1/2" = 1'-0"



3 WALL SECTION 3
 A-412 | 1/2" = 1'-0"