

PROJECT NUMBER: 25-040

ISSUE:

REVISIONS NO. DATE:

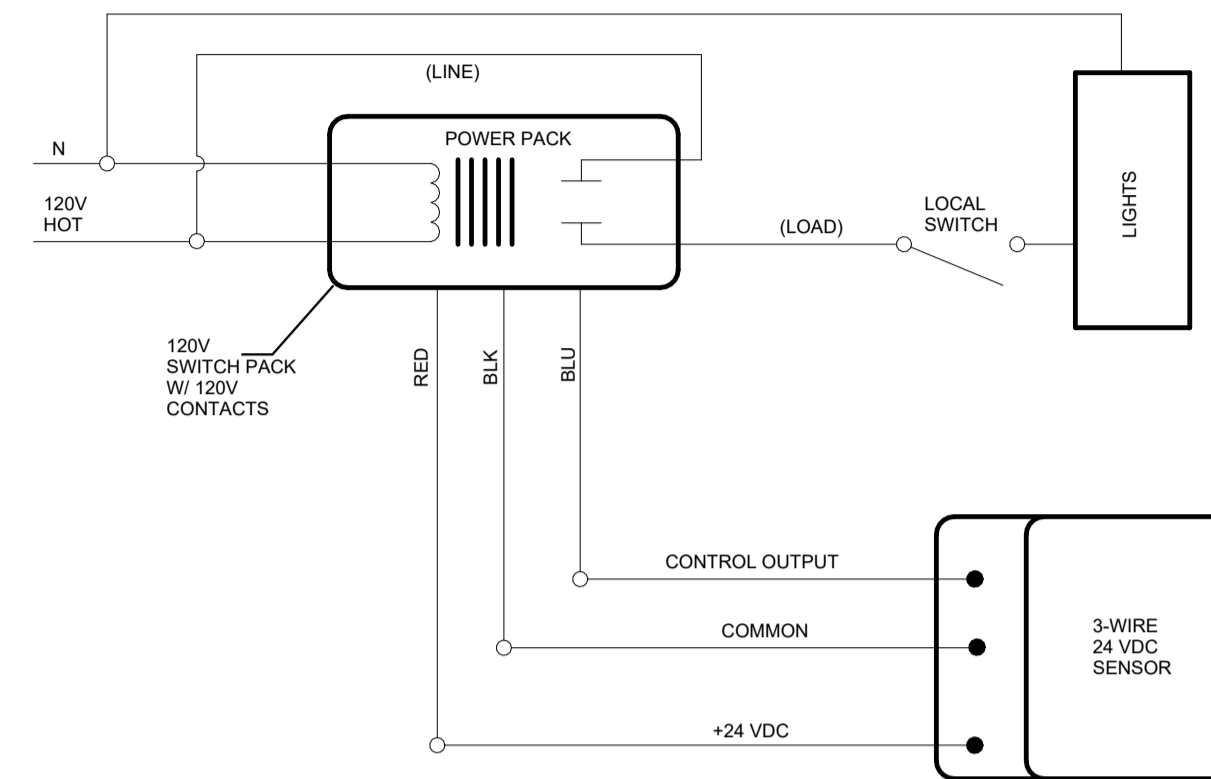
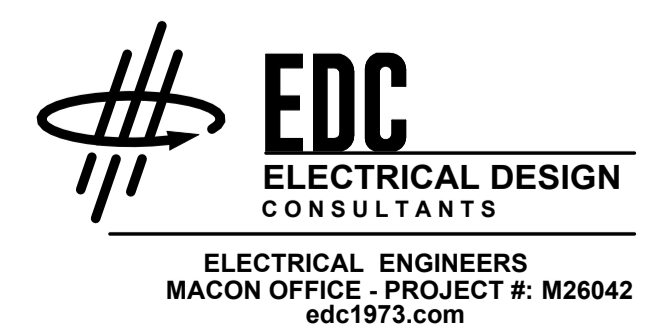
DRYWALL WAREHOUSE HWY 81

827 HIGHWAY 81 CANTON, GA 30115 WALTON COUNTY, GEORGIA

OFFICE FLOOR PLAN - LIGHTING

E-202

ISSUED FOR CONSTRUCTION



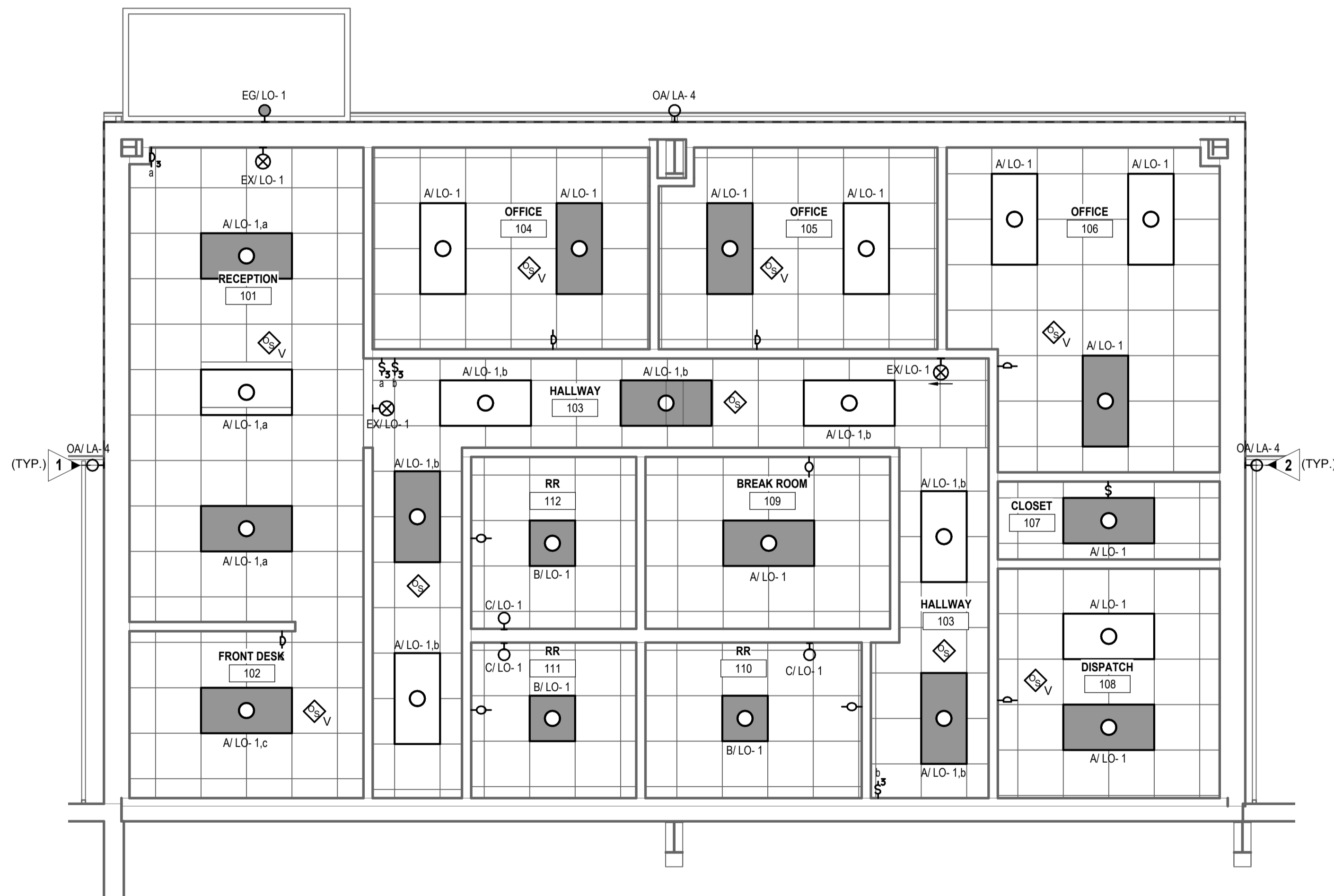
2 WIRING DIAGRAM - SENSOR CONTROL - LIGHTING E-202 NO SCALE

KEYED NOTES:

- 1. ROUTE VIA 8 POLE EXTERIOR LIGHTING CONTACTOR/TIME CLOCK LOCATED ADJACENT PANELS. PHOTO CELL SHALL CONTROL DUSK TILL DAWN OPERATION. TIME CLOCK SHALL INTERRUPT CIRCUIT DURING MIDNIGHT HOURS. SEE KEYED NOTE 2 ON SHEET E-201. USE #10'S ENTIRE CIRCUIT UNLESS OTHERWISE NOTED. PROVIDE MANUAL OVERRIDE SWITCH. COORDINATE FINAL LOCATION WITH OWNER.
- 2. COORDINATE EXACT MOUNTING HEIGHT WITH OWNER/ARCHITECT PRIOR TO ROUGH-IN.

GENERAL NOTES:

- 1. LOWER CASE LETTERS AT SWITCHES AND LIGHT FIXTURES ON THIS SHEET ARE SHOWN TO CLARIFY THE FIXTURES BEING CONTROLLED BY THE ASSOCIATED SWITCHES.
- 2. THIS PLAN INDICATES AREAS TO BE CONTROLLED BY MOTION SENSORS. SINCE COVERAGES AND DEVICES VARY BETWEEN MANUFACTURERS, IT SHALL BE THE CONTRACTOR'S RESPONSIBILITY TO COORDINATE PROPER DEVICE LOCATION, ORIENTATION, AND QUANTITIES WITH THE MANUFACTURER OF THE SYSTEM BEING INSTALLED TO MEET THE SPECIFIED CRITERIA.
- 3. PROVIDE UN-SWITCHED "HOT" CONDUCTOR TO EACH EXIT SIGN, EMERGENCY FIXTURE, AND NIGHT LIGHT FIXTURE.
- 4. PROVIDE NEUTRAL CONDUCTOR TO ALL WALL MOUNTED OCCUPANCY SENSORS. IF SENSOR DOES NOT REQUIRE NEUTRAL, CAP NEUTRAL IN BOX.
- 5. CONTRACTOR SHALL PROVIDE CLASS 2, 600 VOLT RATED, 0-10 VOLT CONTROL WIRING FOR ALL L.E.D. FIXTURES WHERE CONTROLLED BY LOW-VOLTAGE CONTROLLERS OR WALL BOX DIMMERS.
- 6. FOR ALL CONDUIT INSTALLATIONS, CONTRACTOR SHALL PULL #18 AWG TFN SOLID COPPER CONTROL WIRING IN SAME CONDUIT AS LINE-VOLTAGE CONDUCTORS SHALL BE PURPLE AND GRAY. FIXTURE WHIPS SHALL BE PROVIDED WITH CONTROL WIRING INSTALLED IN WHIPS TO MATCH INSTALLATION. FIXTURE WHIPS SHALL NOT EXCEED 6'-0" IN LENGTH. NO EXCEPTIONS.
- 7. THERE ARE NO SWITCHPACKS SHOWN ON THIS PLAN. PROVIDE SWITCHPACKS AS REQUIRED WITH SENSORS. SWITCHPACKS ARE TO BE RATED AT 20A. PROVIDE ONE SWITCHPACK PER 20A LIGHTING CIRCUIT OR PER INDIVIDUAL AREA BEING CONTROLLED.
- 8. CEILING SENSORS ARE TO BE MOUNTED AWAY FROM ANY STRONG AIRFLOW. COORDINATE LOCATION OF SENSOR WITH MECHANICAL AND LIGHTING PLANS.
- 9. ALL SENSORS SHALL BE CEILING MOUNTED EXCEPT WHERE CEILING HEIGHTS EXCEED 15 FT.-0 IN. PROVIDE SENSOR WITH ADAPTOR PLATE FOR JUNCTION BOX MOUNTING (JUNCTION BOX SHALL BE CONCEALED ABOVE ACCESSIBLE CEILING) JUNCTION BOX SHALL BE SUPPORTED FROM STRUCTURE UTILIZING A 3/8 IN. THREADED ROD. WHERE CEILING HEIGHTS EXCEED 15 FT.-0 IN. WALL MOUNT SENSORS AT 12'-0 IN.
- 10. EXIT SIGN MOUNTING IS TO BE WITH BOTTOM OF FIXTURE A MAXIMUM OF 48" ABOVE INDICATING DOOR OR PATH.



1 OFFICE FLOOR PLAN - LIGHTING E-202 SCALE: 1/4" = 1'-0"