

CLASSES OF EMBEDMENT AND BACKFILL MATERIALS

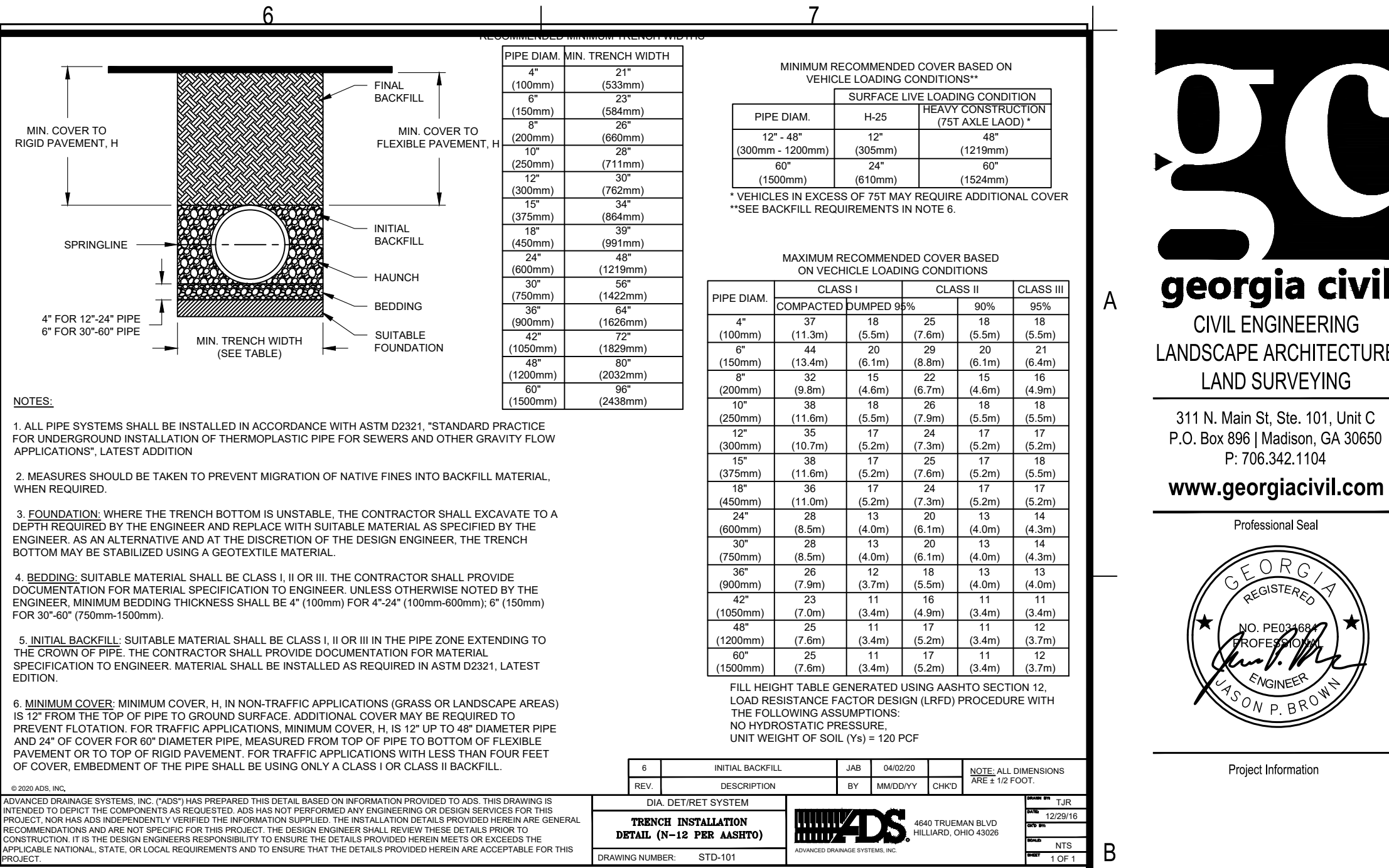
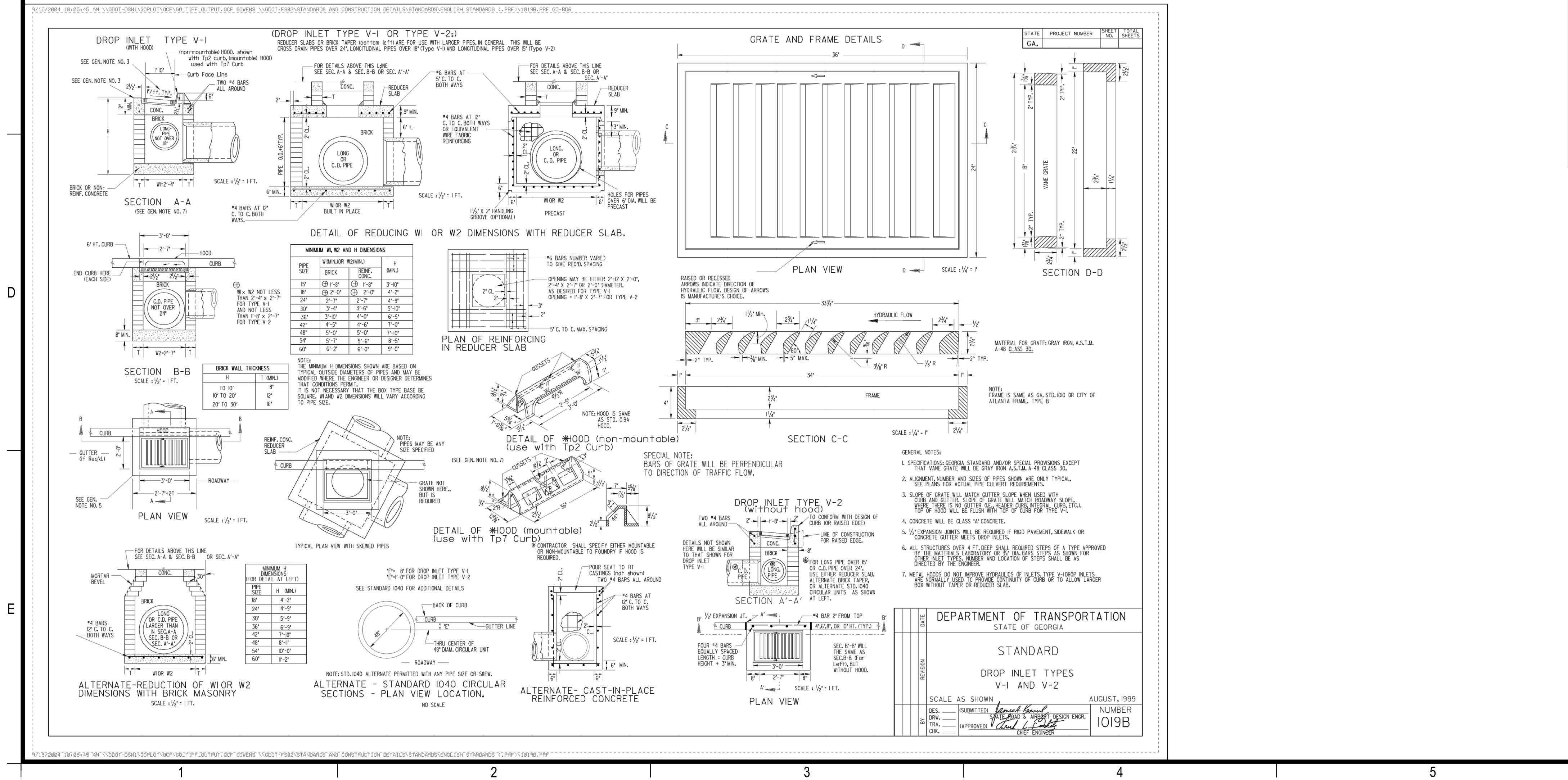
CLASS	DESCRIPTION	MINIMUM RECOMMENDED COVER BASED ON VEHICLE LOADING CONDITIONS*		MAXIMUM RECOMMENDED COVER BASED ON VEHICLE LOADING CONDITIONS		
		MIN. COVER TO RIGID PAVEMENT, H	MIN. COVER TO FLEXIBLE PAVEMENT, H	CLASS I	CLASS II	CLASS III
1	CLASS I	12"	12"	12"	12"	12"
2	CLASS II	12"	12"	12"	12"	12"
3	CLASS III	12"	12"	12"	12"	12"

MINIMUM RECOMMENDED COVER BASED ON VEHICLE LOADING CONDITIONS*

PIPE DIAM.	A-25	HEAVY COMBINATION
12" - 48"	12"	12"
300mm - 1200mm	12"	12"

MAXIMUM RECOMMENDED COVER BASED ON VEHICLE LOADING CONDITIONS

PIPE DIAM.	CLASS I	CLASS II	CLASS III
4"	11.3m	5.5m	2.5m
6"	11.3m	5.5m	2.5m
8"	11.3m	5.5m	2.5m
10"	11.3m	5.5m	2.5m
12"	11.3m	5.5m	2.5m
15"	11.3m	5.5m	2.5m
18"	11.3m	5.5m	2.5m
24"	11.3m	5.5m	2.5m
30"	11.3m	5.5m	2.5m
36"	11.3m	5.5m	2.5m
42"	11.3m	5.5m	2.5m
48"	11.3m	5.5m	2.5m
54"	11.3m	5.5m	2.5m
60"	11.3m	5.5m	2.5m
66"	11.3m	5.5m	2.5m
72"	11.3m	5.5m	2.5m
78"	11.3m	5.5m	2.5m
84"	11.3m	5.5m	2.5m
90"	11.3m	5.5m	2.5m
96"	11.3m	5.5m	2.5m
102"	11.3m	5.5m	2.5m
108"	11.3m	5.5m	2.5m
114"	11.3m	5.5m	2.5m
120"	11.3m	5.5m	2.5m
126"	11.3m	5.5m	2.5m
132"	11.3m	5.5m	2.5m
138"	11.3m	5.5m	2.5m
144"	11.3m	5.5m	2.5m
150"	11.3m	5.5m	2.5m



CLASSES OF EMBEDMENT AND BACKFILL MATERIALS

CLASS	DESCRIPTION	MINIMUM RECOMMENDED COVER BASED ON VEHICLE LOADING CONDITIONS*		MAXIMUM RECOMMENDED COVER BASED ON VEHICLE LOADING CONDITIONS		
		MIN. COVER TO RIGID PAVEMENT, H	MIN. COVER TO FLEXIBLE PAVEMENT, H	CLASS I	CLASS II	CLASS III
1	CLASS I	12"	12"	12"	12"	12"
2	CLASS II	12"	12"	12"	12"	12"
3	CLASS III	12"	12"	12"	12"	12"

DEPARTMENT OF TRANSPORTATION
STATE OF GEORGIA

STANDARD
DROP INLET TYPES
V-1 AND V-2

SCALE AS SHOWN AUGUST, 1999 NUMBER 1019B

DESIGNER: SUBMITTED: *[Signature]*
APPROVED: *[Signature]* CHIEF ENGINEER

REVISIONS:

NO.	DESCRIPTION	DATE
1	AS SHOWN	8/99

GEORGIA811
www.Georgia811.com

Contact 811 before you dig

Utilities/Services shown are for Contractor's convenience. Items are shown schematically and neither the design professional nor the owner assumes any responsibility for variations in their actual location. This plan may not show and/or may incorrectly show utilities located on site. Contractor shall be responsible to secure and use the services of a private utility locator firm during the entire course of work and shall pay for said services. Contractor shall locate utilities prior to any disturbance including field verifying location and depth of utilities that are to be saved and protected. Contractor shall notify the design professional of any utility conflicts prior to installation of new utilities, grading, etc. The Contractor, at their expense, shall be responsible to repair, replace and/or relocate, as necessary, any utilities impacted, whether shown or not. Reattachment, relocation, etc. of utilities shall be coordinated with the respective utility company.

gc
georgia civil
CIVIL ENGINEERING
LANDSCAPE ARCHITECTURE
LAND SURVEYING

311 N. Main St., Ste. 101, Unit C
P.O. Box 896 | Madison, GA 30650
P: 706.342.1104
www.georgiacivil.com

Professional Seal

GEORGIA
REGISTERED
ENGINEER
JASON P. BROWN

Project Information

DRYWALL WAREHOUSE HWY 81
257 HIGHWAY 81
OXFORD, GA 30054
ZONING: R-1

DRAWING DATE: 5/27/2026
DRAWN BY: DLD
CHECKED BY: JPB

REVISIONS

DATE: DESCRIPTION:

Copyright 2026 georgia civil, inc.
This document and its reproduction are the property of Georgia Civil, Inc. and may not be reproduced, published, or used in whole or in part without the written consent of Georgia Civil, Inc.

Sheet Title

STORMWATER MANAGEMENT DETAILS

Sheet Number

C-4.2