



georgia civil
CIVIL ENGINEERING
LANDSCAPE ARCHITECTURE
LAND SURVEYING

311 N. Main St. Ste. 101, Unit C
P.O. Box 896 | Madison, GA 30650
P: 706.342.1104

www.georgiacivil.com



Project Information

DRYWALL WAREHOUSE HWY 81
257 HIGHWAY 81
OXFORD, GA 30054
ZONING: R-1

DRAWING DATE: 5/27/2026
DRAWN BY: DLD
CHECKED BY: JPB

REVISIONS
DATE: DESCRIPTION:

Copyright 2026 georgia civil, inc.
This document and its reproduction are the property of Georgia Civil, Inc. and may not be reproduced, published, or used in whole or in part without the written consent of Georgia Civil, Inc.

Sheet Title

LANDSCAPE PLAN

Sheet Number

C-7.0

PLANT SCHEDULE

SYMBOL	CODE	QTY	BOTANICAL / COMMON NAME	CONT	CAL	SIZE
TREES						
	CRY JAP	8	Cryptomeria japonica / Japanese Cedar	B&B		6'-8" H
	PIN TAE	3	Pinus taeda / Loblolly Pine	B&B		6'-8" H
	QUE LYR	5	Quercus lyrata / Overcup Oak	B&B	2" Cal.	
	QOU NUT	5	Quercus nuttallii / Nuttall Oak	B&B	2" Cal.	
SHRUBS						
	ILE SA2	18	Ilex x attenuata 'Savannah' / Savannah Holly	5 Gallon		
	OSM FRA	14	Osmanthus fragrans / Sweet Olive	5 Gallon		
	POD MAC	24	Podocarpus macrophyllus / Yew Podocarpus	5 Gallon		

EXISTING TREE TEST PLOTS			PLOT 2 - 50' X 50'			PLOT 3 - 50' X 50'			PLOT 4 - 50' X 50'		
TYPE	DBH	UNITS	TYPE	DBH	UNITS	TYPE	DBH	UNITS	TYPE	DBH	UNITS
DECIDUOUS	11	1.6	DECIDUOUS	10	1.6	DECIDUOUS	17	2.4	DECIDUOUS	2	0.4
DECIDUOUS	2	0.4	DECIDUOUS	5	0.8	DECIDUOUS	22	3.0	DECIDUOUS	22	3.0
DECIDUOUS	5	0.8	DECIDUOUS	2	0.4	DECIDUOUS	5	0.8	DECIDUOUS	12	1.6
DECIDUOUS	4	0.8	DECIDUOUS	10	1.6	DECIDUOUS	12	1.6	DECIDUOUS	4	0.8
DECIDUOUS	6	0.8	DECIDUOUS	7	1.2	DECIDUOUS	8	1.2	DECIDUOUS	11	1.6
DECIDUOUS	7	1.2	DECIDUOUS	10	1.6	DECIDUOUS	10	1.6	DECIDUOUS	2	0.4
DECIDUOUS	5	0.8	DECIDUOUS	7	1.2	DECIDUOUS	12	1.6	DECIDUOUS	2	0.4
DECIDUOUS	4	0.8	DECIDUOUS	5	0.8	DECIDUOUS	16	2.4	DECIDUOUS	5	0.8
DECIDUOUS	11	1.6	DECIDUOUS	7	1.2	DECIDUOUS	7	1.2	DECIDUOUS	8	1.2
DECIDUOUS	10	1.2	DECIDUOUS	7	1.2	DECIDUOUS	7	1.2	DECIDUOUS	2	0.4
DECIDUOUS	6	0.8	DECIDUOUS	7	1.2	DECIDUOUS	2	0.4	DECIDUOUS	2	0.4
DECIDUOUS	3	0.4	DECIDUOUS	5	0.8	DECIDUOUS	2	0.4	DECIDUOUS	5	0.8
DECIDUOUS	5	0.8	DECIDUOUS	10	1.6	DECIDUOUS	5	0.8	DECIDUOUS	5	0.8
DECIDUOUS	6	0.8	DECIDUOUS	8	1.2	DECIDUOUS	4	0.8	DECIDUOUS	4	0.8
DECIDUOUS	4	0.8	DECIDUOUS	8	1.2	DECIDUOUS	2	0.4	DECIDUOUS	2	0.4
DECIDUOUS	8	1.2	DECIDUOUS	5	0.8	DECIDUOUS	4	0.8	DECIDUOUS	4	0.8
DECIDUOUS	4	0.8	DECIDUOUS	5	0.8	DECIDUOUS	5	0.8	DECIDUOUS	5	0.8
DECIDUOUS	4	0.8	EVERGREEN	16.8	2.4	DECIDUOUS	16.8	2.4	EVERGREEN	16.8	2.4
DECIDUOUS	5	0.8	EVERGREEN	5	0.8	EVERGREEN	12	1.5	EVERGREEN	27.6	4.0
DECIDUOUS	5	0.8	TOTAL TDU = 22.7			TOTAL TDU = 14.6			TOTAL TDU = 19.2		
DECIDUOUS	7	1.2									
DECIDUOUS	16	2.4									
TOTAL TDU		22									

TREE PROTECTION CALCULATIONS:
EXISTING TREE PLOT DENSITY: 75.5 TDU/10,000 SF = 341.95 TDU PER ACRE
EXISTING UNDISTURBED AREA: 82,568 SF (1.8955 ACRES)
EXISTING TREES TO REMAIN: 648.15 TDU
SITE AREA: 7,068 ACRES
REQUIRED TREE DENSITY: 106.02 TDU (15 UNITS PER ACRE)
TREE DENSITY PROVIDED: 643.19 TDU (91 UNITS PER ACRE)

SPECIMEN TREES:

S1	OAK	39.7 DBH	8.7 TDU	RETAIN
S2	OAK	34" DBH	6.3 TDU	RETAIN
S3	OAK	39" DBH	6.3 TDU	REMOVE
S4	OAK	34" DBH	6.3 TDU	REMOVE
S5	OAK	31" DBH	5.2 TDU	REMOVE
S6	OAK	32" DBH	5.6 TDU	REMOVE

REPLACEMENT TREES REQUIRED: 8
REPLACEMENT TREES PROVIDED: 8
5 QUERCUS LYRATA - OVERCUP OAK - 2" CALIPER
5 QUERCUS NUTTALLII - NUTTALL OAK - 2" CALIPER

TREE PROTECTION NOTES:
TREES AGREED UPON TO BE SAVED ARE THE RESPONSIBILITY OF THE OWNER. ALL REQUIRED VEGETATION SHALL BE MAINTAINED FOR ONE YEAR AFTER DATE OF FINAL INSPECTION.

NO TRENCHING OR DIGGING WITH MACHINES IS ALLOWED WITHIN THE TREE DRIP LINES. WHEN DIGGING NEAR TREES, THE CONTRACTOR SHALL PRUNE ALL EXPOSED ROOTS ONE (1) INCH IN DIAMETER AND LARGER ON THE SIDE OF THE TRENCH ADJACENT TO THE TREES. PRUNING SHALL CONSIST OF MAKING A CLEAN CUT FLUSH WITH THE SIDE OF THE TRENCH TO PROMOTE NEW ROOT GROWTH.

TREE PROTECTION DEVICES MUST BE INSTALLED AND INSPECTED PRIOR TO ANY CLEARING, GRUBBING OR GRADING. ALL TREE PROTECTION DEVICES SHALL BE INSTALLED PRIOR TO LAND DISTURBANCE AND MAINTAINED UNTIL FINAL LANDSCAPING.

TREE PROTECTION FENCE SHALL BE INSTALLED AT THE EDGE OF THE TREE DRIP LINE, WHERE POSSIBLE. ALL TREE PROTECTION FENCING TO BE INSPECTED DAILY AND REPAIRED OR REPLACED AS NEEDED.

TREE PROTECTION AND REPLACEMENT SHALL BE ENFORCED ACCORDING TO COUNTY STANDARDS.

ALL TREE PROTECTION AREAS TO BE PROTECTED FROM SEDIMENTATION.

PRUNING OF TREE LIMBS TO PROVIDE CLEARANCE FOR EQUIPMENT AND MATERIALS SHALL BE DONE ACCORDING TO STANDARD ARBORICULTURAL PRACTICE (SEE ANSI A300-1995).

PROTECT THE TRUNKS OF ANY TREES BEING PRESERVED WITHIN THE TEMPORARY OR PERMANENT UTILITY EASEMENTS WITH STRAPPED-ON PLANKING OR SIMILAR PROTECTIVE DEVICE.

NO PARKING, STORAGE OR OTHER CONSTRUCTION ACTIVITIES TO OCCUR WITHIN TREE PROTECTION AREAS OR WITHIN SIX (6) FEET OF THE TREE DRIPLINE.

ANY TREES THAT INCUR SIGNIFICANT DAMAGE OR DISTURBANCE SHALL BE EVALUATED FOR HEALTH AND VIABILITY PRIOR TO RESUMING CONSTRUCTION.

OWNER/DEVELOPER

COMPANY: PABLO ZURITA
ADDRESS: 80 PADEN ST
COVINGTON, GA 30016
PHONE: (478) 334-1855
CONTACT: ANGEL ZURITA
EMAIL: ZURITAANGEL@GMAIL.COM

CONTRACTOR

COMPANY: SUNBELT BUILDERS
ADDRESS: 10641 HWY 36
COVINGTON, GA 30014
CONTACT: MIKE MCCROREY
PHONE: 404.644.2939
EMAIL: MICCROREY@SUNBELTBUILDERS.COM

SURVEYOR

COMPANY: GEORGIA CIVIL, INC.
ADDRESS: P.O. BOX 896 MADISON,
GA 30650 PHONE: 706.342.1104
CONTACT: BRIAN SLATE EMAIL:
BSLATE@GEORGIA-CIVIL.COM

SITE DESIGNER

COMPANY: GEORGIA CIVIL, INC.
ADDRESS: P.O. BOX 896
MADISON, GA 30650
PHONE: 706.342.1104

JASON P. BROWN
LEVEL II CERTIFIED
DESIGN PROFESSIONAL

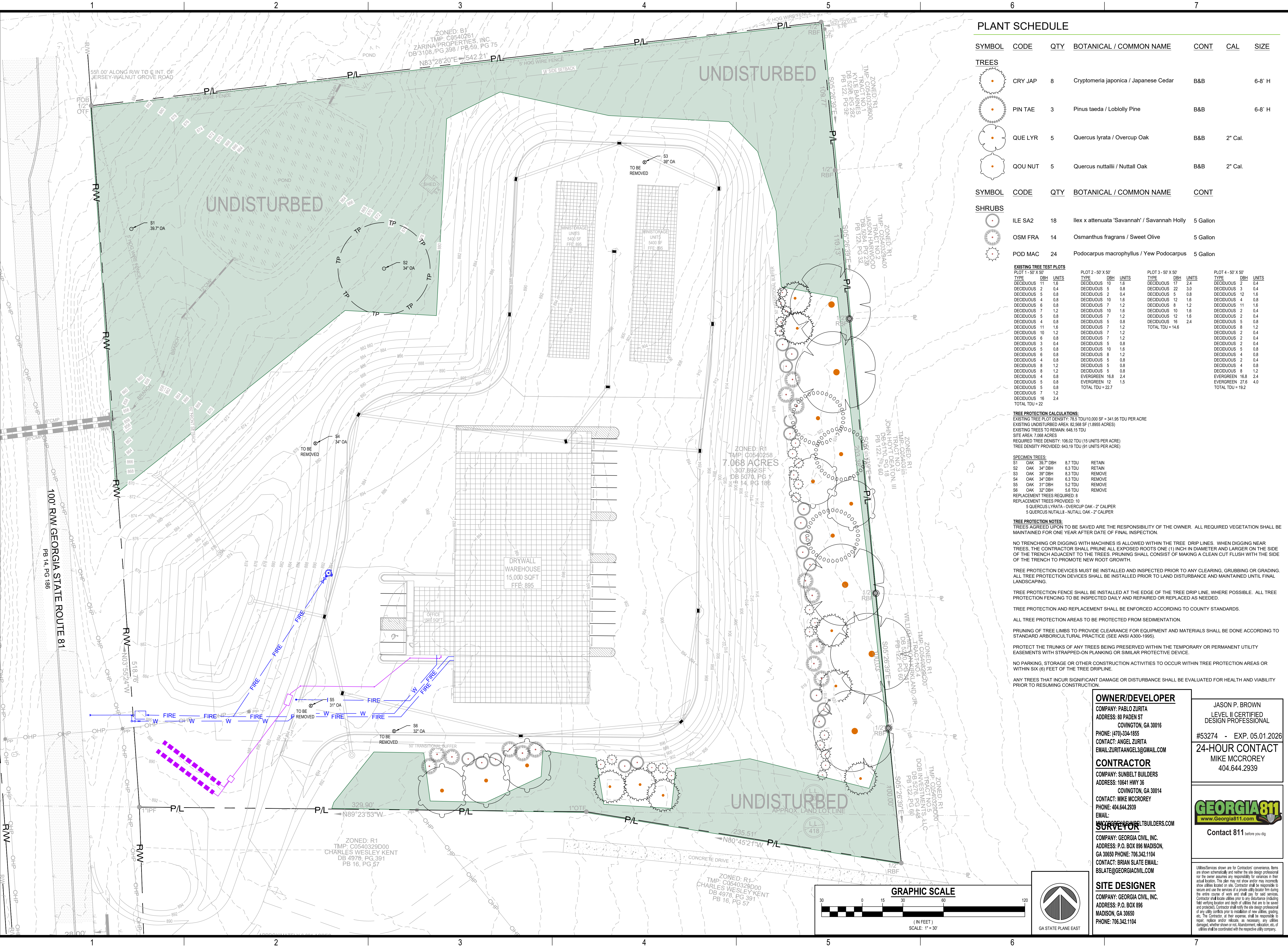
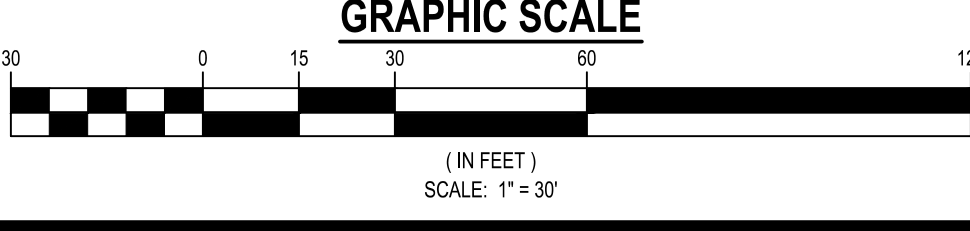
#53274 - EXP. 05.01.2026

24-HOUR CONTACT
MIKE MCCROREY
404.644.2939



Contact 811 before you dig

Utilities/Services shown are for Contractor's convenience. Items are shown schematically and neither the site design professional nor the owner assumes any responsibility for accuracy in their actual location. This plan may not show and/or may incorrectly show utilities located on site. Contractor shall be responsible to secure and use the services of a private utility locator firm during the entire course of work and shall pay for said services. Contractor shall locate utilities prior to any disturbance including field verifying location and depth of utilities that are to be saved and protected. Contractor shall notify the site design professional of any utility conflicts prior to installation of new utilities, grading, etc. The Contractor at their expense shall be responsible to repair, replace and/or indicate, as necessary, any utilities damaged, whether shown or not. Agreement, relocation, etc. of utilities shall be coordinated with the respective utility company.



ZONED: B1
TMP: C0540261
ZARINA PROPERTIES, INC.
DB 3108 / PG 398 / PB 69, PG 75
N83°28'20"E = 542.21'

ZONED: R1
TMP: C0540258
7.068 ACRES
807,892 SF
DB 5070, PG 1
14, PG 186

ZONED: R1
TMP: C0540329D00
CHARLES WESLEY KENT
DB 4978, PG 391
PB 16, PG 57

ZONED: R1
TMP: C0540329D00
CHARLES WESLEY KENT
DB 4978, PG 391
PB 16, PG 57