

ARCHITECT

CONSULTANT

STAMP INVALID UNLESS SIGNED

DOOR & WINDOW SCHEDULES

New Facility

Hampton Travel Center

Hwy 81 / Parcel # 019-02031002 Hampton, Georgia 30253

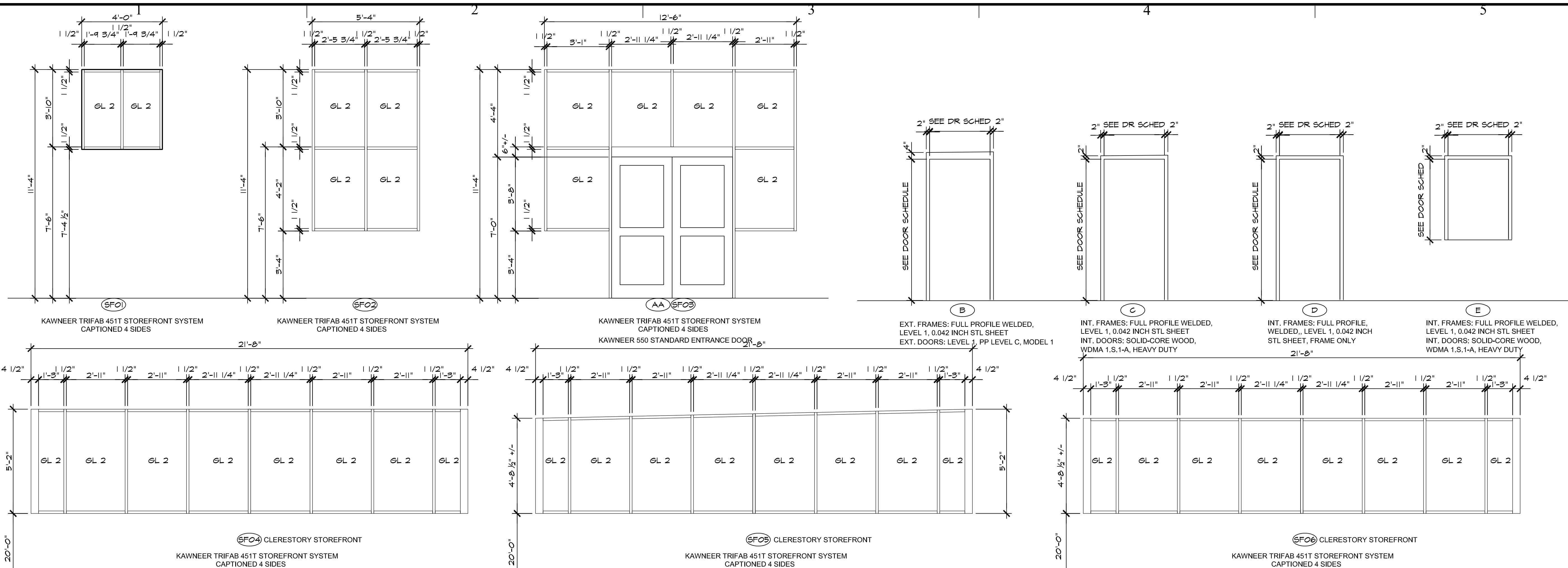
JOB NO.:	02511
DRAWN BY:	GM
CHECKED BY:	GM
DESCRIPTION:	SCH-REVIEW
DATE:	00.00.25
DESCRIPTION:	DD-REVIEW
DATE:	00.00.25
DESCRIPTION:	CD-REVIEW
DATE:	01.12.26
DESCRIPTION:	BID-CONST
DATE:	00.00.26
REVISIONS:	
1	03.13.26
2	
3	
4	
5	
6	
7	

THESE DRAWINGS ARE THE PROPERTY OF GM ARCHITECT AND ARE NOT TO BE REPRODUCED OR REVISED WITHOUT PERMISSION AND CREDIT.
COPYRIGHT: © 2025

SHEET

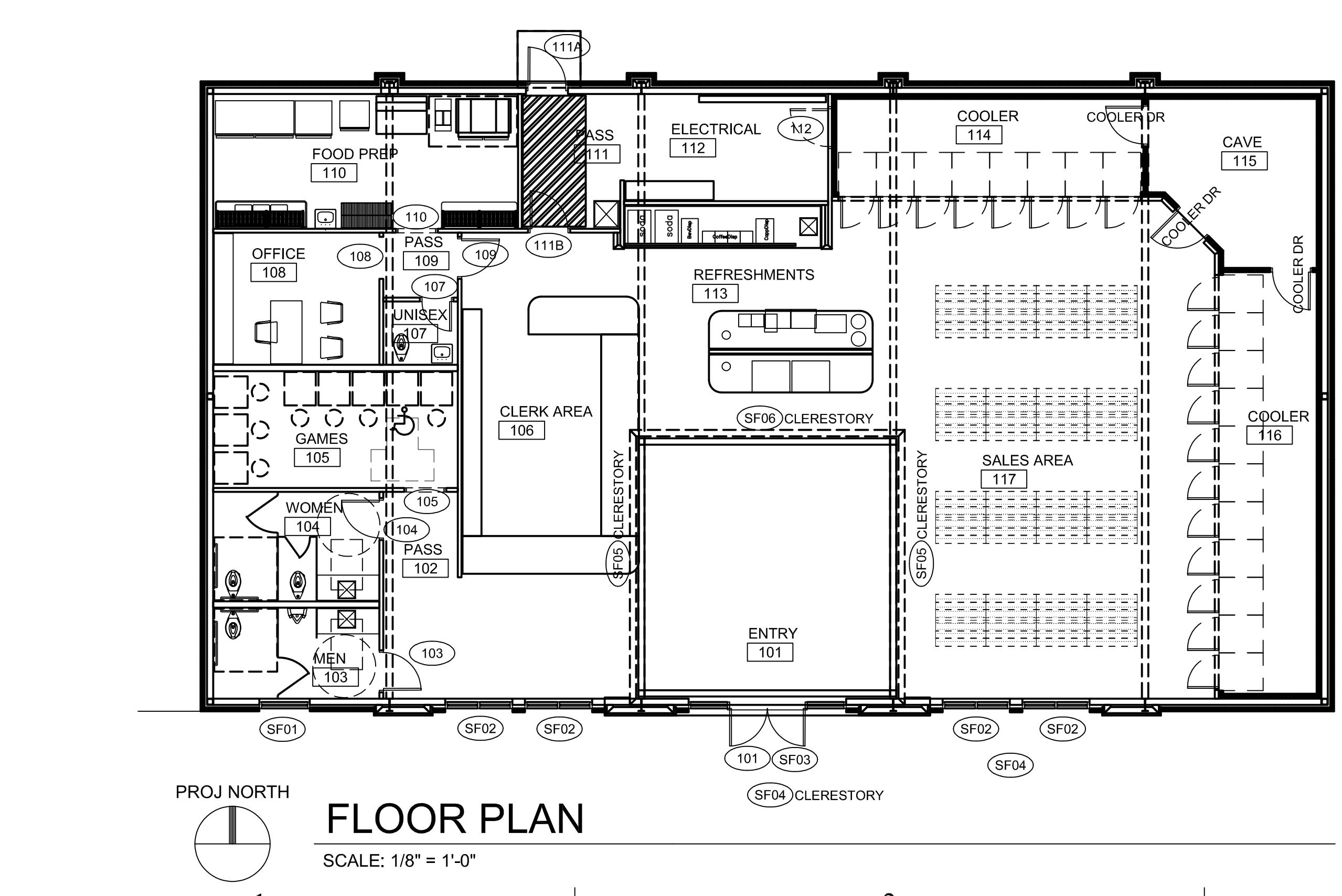
A8.1

OF



DOOR, WINDOW & FRAME ELEVATIONS

SCALE: 3/8" = 1'-0"



FLOOR PLAN

SCALE: 1/8" = 1'-0"

DOOR AND FRAME SCHEDULE

ABBREVIATIONS:
AL ALUMINUM SCW SOLID CORE WOOD HD WOOD
GL GLASS TYPE STN STAIN WPL WOOD PANEL
HCW HOLLOW CORE WOOD STL STEEL
HR HOUR RATING S.S. STAINLESS STEEL

SYMBOL	DOOR							FRAME							HDWE.			REMARKS		
	SPACE	MARK	W	H	T	MAT'L.	TYPE	GL.	UND. CUT	MAT'L.	DEPTH	TYPE	TRIM TYPE	H	J	S	FIRE RAT'G		HDWE. GRP.	KEY SPACE
101	101	6'-0"	7'-0"	1-3/4"	AL	AA	GL 9	1/2	AL	4-1/2"	SF03	N/A	-	-	-	-	N/A	F	EXT	-
103	103	3'-0"	6'-8"	1-3/4"	SCW	C	-	3/4	STL	5-3/4"	C	N/A	-	-	-	-	N/A	B	102	N/A
104	104	3'-0"	6'-8"	1-3/4"	SCW	C	-	3/4	STL	5-3/4"	C	N/A	-	-	-	-	N/A	B	102	N/A
105	105	3'-0"	6'-8"	1-3/4"	-	-	-	-	STL	5-3/4"	D	N/A	-	-	-	-	N/A	-	-	FRAME ONLY
107	107	2'-4"	6'-8"	1-3/4"	SCW	C	-	3/4	STL	5-3/4"	C	N/A	-	-	-	-	N/A	J	109	N/A
108	108	3'-0"	6'-8"	1-3/4"	SCW	C	N/A	3/4	HM	5-3/4"	C	-	-	-	-	-	N/A	D	109	N/A
109	109	3'-0"	6'-8"	1-3/4"	SCW	C	N/A	3/4	HM	5-3/4"	C	-	-	-	-	-	N/A	D	106	N/A
110	110	3'-0"	6'-8"	1-3/4"	-	-	-	-	STL	5-3/4"	D	N/A	-	-	-	-	N/A	-	-	FRAME ONLY
111	111A	3'-0"	7'-0"	1-3/4"	HM	B	-	1/2	STL	7-3/4"	B	N/A	-	-	-	-	N/A	G	EXT	N/A
111	111B	3'-0"	6'-8"	1-3/4"	SCW	C	N/A	3/4	HM	5-3/4"	C	-	-	-	-	-	3/4 HR	A	106	N/A
112	112	3'-0"	3'-6"	1-3/4"	SCW	E	N/A	3/4	HM	5-3/4"	E	-	-	-	-	-	3/4 HR	H	112	N/A

NOTE: OPENING MARKS 102, 106, AND 113 THRU 117 ARE NOT USED.

HARDWARE SCHEDULE

SET A 1-1/2 FR	BB HINGES CLOSER W/O HO LATCHSET W/ LEVER TRIM (PASSAGE LATCHSET)
SET B 1-1/2 FR	BB HINGES CLOSER W/O HO FULL W/ FLATE PUSH PLATE
SET C (NOT USED)	
SET D 1-1/2 FR	BB HINGES CLOSER W/O HO LOCKSET W/ LEVER TRIM (OFFICE LOCKSET)
SET E (NOT USED)	
SET F 3 FR	BB HINGES CLOSER W/O HO PUSH BAR W/ FULL TRIM DEADLOCK W/ THUMBTURN HEAD-FOOT BOLT THRESHOLD SET WEATHERSTRIPPING
SET G 1-1/2 FR	BB HINGES CLOSER W/O HO FANIC DEVICE (TRIM TYPE) W/ LEVER HANDLE DEADLOCK W/ THUMBTURN THRESHOLD SET WEATHERSTRIPPING
SET H 1 FR	BB HINGES CLOSER W/O HO LATCHSET W/ LEVER TRIM (PASSAGE LATCHSET)
SET J 1-1/2 FR	BB HINGES CLOSER W/O HO LOCKSET W/ LEVER TRIM (PRIVACY LOCKSET)

GLASS TYPES

GL 1	INSULATING GLASS WITH TINTED LOW-E EXTERIOR PANE AND CLEAR GLASS INTERIOR PANE.
GL 2	INSULATING GLASS WITH TEMPERED TINTED LOW-E EXTERIOR PANE AND TEMPERED CLEAR GLASS INTERIOR PANE.
GL 3	INSULATING GLASS WITH TINTED EXTERIOR PANE AND CLEAR GLASS INTERIOR PANE.
GL 4	INSULATING GLASS WITH TEMPERED TINTED EXTERIOR PANE AND TEMPERED CLEAR GLASS INTERIOR PANE.
GL 5	SINGLE 1/4" TINTED GLASS.
GL 6	SINGLE 1/4" CLEAR GLASS.
GL 7	SINGLE 1/4" TEMPERED CLEAR GLASS.
GL 8	INSULATING GLASS WITH CLEAR EXTERIOR PANE AND CLEAR GLASS INTERIOR PANE.
GL 9	SINGLE TEMPERED TINTED GLASS.
GL 10	INSULATING GLASS WITH TEMPERED CLEAR EXTERIOR PANE AND TEMPERED CLEAR GLASS INTERIOR PANE.

DOOR, WINDOW, AND FRAME NOTES

- ALL STEEL DOORS, WINDOWS, AND FRAMES SHALL BE PAINTED INCLUDING ALL TOPS, BOTTOMS, AND EDGES, EXCEPT MANUFACTURERS' PREFINISHED UNITS.
- PROVIDE LEVER-HANDLES THAT ARE ONE MOTION LOCKING MECHANISM WITHOUT THE USE OF A KEY.