



ARCHITECT

CONSULTANT

STAMP INVALID UNLESS SIGNED

INTERIOR ELEVATIONS

New Facility

Hampton Travel Center

Hwy 81 / Parcel # 019-02031002 Hampton, Georgia 30253

JOB NO.:	02511
DRAWN BY:	GM
CHECKED BY:	GM
DESCRIPTION:	SCH-REVIEW
DATE:	00.00.25
DESCRIPTION:	DD-REVIEW
DATE:	00.00.25
DESCRIPTION:	CD-REVIEW
DATE:	01.12.26
DESCRIPTION:	BID-CONST
DATE:	00.00.26

REVISIONS:	
1	03.13.26
2	
3	
4	
5	
6	
7	

THESE DRAWINGS ARE THE PROPERTY OF GMARCHITECT AND ARE NOT TO BE REPRODUCED OR REUSED WITHOUT PERMISSION AND CREDIT.
 COPYRIGHT © 2025

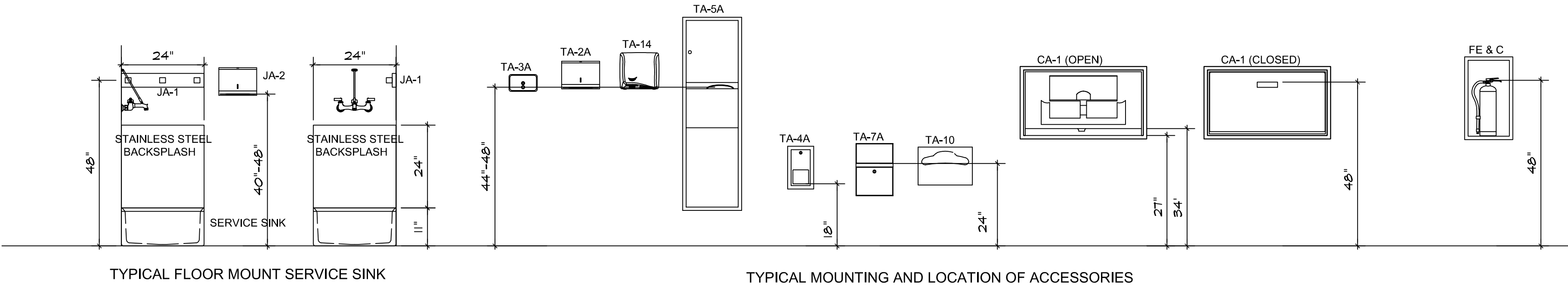
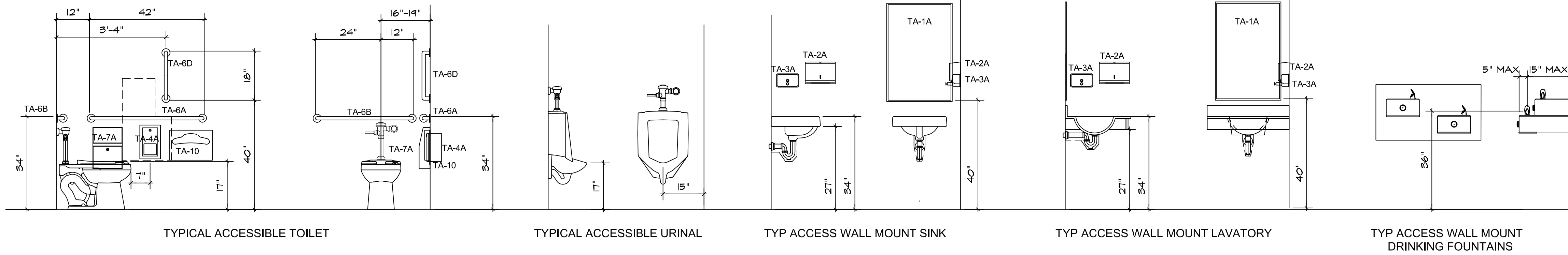
SHEET

A9.2.0

OF

ACCESSORY SCHEDULE

TA-1A	MIRROR UNIT: 24X36
TA-1B	MIRROR UNIT: 18X36
TA-2A	PAPER TOWEL DISPENSER (FOLDED)
TA-2B	PAPER TOWEL DISPENSER (ROLLED)
TA-3A	SOAP DISPENSER
TA-4A	TOILET TISSUE DISPENSER (ROLLED)
TA-4B	COMBINATION TOILET TISSUE DISPENSER (ROLLED)
TA-4C	TOILET TISSUE DISPENSER (FOLDED)
TA-4D	TOILET TISSUE DISPENSER (JUMBO ROLLED)
TA-5A	COMBINATION TOWEL DISPENSER (FOLDED) / WASTE RECEPTACLE
TA-5B	COMBINATION TOWEL DISPENSER (ROLLED) / WASTE RECEPTACLE
TA-5C	MULTIPURPOSE SOAP / TOWEL DISPENSER
TA-6A	GRAB BAR 42
TA-6B	GRAB BAR 36
TA-6C	GRAB BAR 24
TA-6D	GRAB BAR 18
TA-7A	SANITARY NAPKIN DISPOSAL (WALL MOUNT)
TA-7B	SANITARY NAPKIN DISPOSAL (PARTITION MOUNT/DUAL ACCESS)
TA-8	ROBE HOOK
TA-9	WASTE RECEPTACLE
TA-10	SEAT COVER DISPENSER
TA-11	VENDING
TA-12	BAG SHELF
TA-13	SEAT COVER DISPENSER
TA-14	HAND DRYER
CA-1	CHANGING STATION
CA-2	CHILD PROTECTION SEAT
UG-1	UNDERLAVATORY GUARDS
JA-1	MOP AND BROOM HOLDER
JA-2	PAPER TOWEL DISPENSER



INTERIOR ELEVATIONS: MOUNTING & LOCATION REQUIREMENTS

SCALE: 1/2"=1'-0"