

REVIEW SET
NOT FOR
CONSTRUCTION

PLUMBING PLAN - SEWER

New Facility

Hampton Travel Center

Highway 81/Parcel#019-02031002/Hampton, Georgia 30228

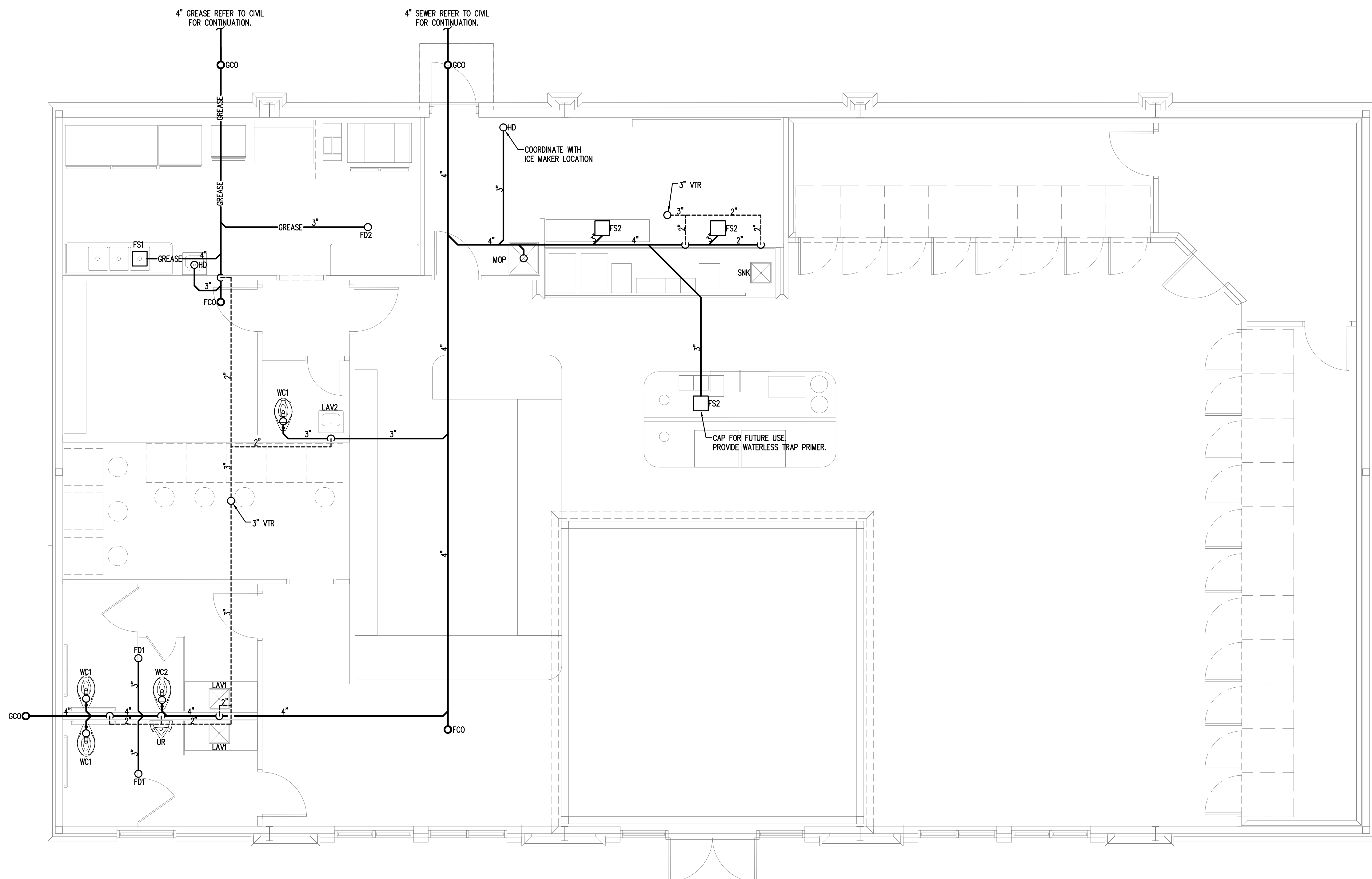
JOB NO.:	02511
DRAWN BY:	GM
CHECKED BY:	GM
DESCRIPTION:	SCH-REVIEW
DATE:	00.00.25
DESCRIPTION:	DD-REVIEW
DATE:	00.00.25
DESCRIPTION:	CD-REVIEW
DATE:	12.19.25
DESCRIPTION:	BID-CONST
DATE:	00.00.25
REVISIONS:	
1	03.13.26
2	
3	
4	
5	
6	
7	

THESE DRAWINGS ARE THE PROPERTY OF GM ARCHITECT AND ARE NOT TO BE REPRODUCED OR REUSED WITHOUT PERMISSION AND CREDIT.
COPYRIGHT © 2025

SHEET
P1.0
OF

KITCHEN EQUIPMENT NOTES:

PLUMBER IS TO FURNISH AND INSTALL ALL NECESSARY VALVES, TRAPS, TAIL PIECES, LINE STRAINERS, WATER PRESSURE REDUCING VALVES AND VACUUM BREAKERS AND CONNECT ALL WATER, WASTE, AND VENT LINES TO KITCHEN EQUIPMENT. CONNECT TO KITCHEN EQUIPMENT THROUGH INDIVIDUAL WATER FILTERS WHEN REQUIRED BY EQUIPMENT MANUFACTURER. USE FLEXIBLE STAINLESS STEEL LINES WITH QUICK DISCONNECT CONNECTIONS. VERIFY WITH OWNERS REPRESENTATIVE EXACT LOCATION OF EQUIPMENT AND PLUMBING ROUGH IN SIZES, LOCATIONS, AND REQUIREMENTS.



1 PLUMBING PLAN - SEWER
SCALE: 1/4"=1'-0"