

| PROJECT ABBREVIATIONS | | | |
|-----------------------|------------------------------------|-------|----------------------------------|
| A/E | ARCHITECT / ENGINEER | EJ | EXPANSION JOINT |
| AAV | AUTOMATIC AIR VENT | ENT | ENTERING |
| ACD | AUTOMATIC CONTROL DAMPER | ERC | ELECTRIC REHEAT COIL |
| AD | ACCESS DOOR | ERP | ELECTRIC RADIANT PANEL |
| AF | AFTER FILTER | ESP | EXTERNAL STATIC PRESSURE |
| AFF | ABOVE FINISHED FLOOR | ET | EXPANSION TANK |
| AFMS | AIR FLOW MEASURING STATION | ETO | ETHYLENE OXIDE |
| AHU | AIR-HANDLING UNIT | EUH | ELECTRIC UNIT HEATER |
| AMP | AMPERE | EWT | ENTERING WATER TEMPERATURE |
| APD | AIR PRESSURE DROP | EX | EXISTING |
| AS | AIR SEPARATOR | | |
| B | BOILER | F | FAHRENHEIT |
| BAS | BUILDING AUTOMATION SYSTEM | F&T | FLOAT AND THERMOSTATIC |
| BBR | BASE BOARD RADIATOR | FA | FREE AREA |
| BE | BOTTOM ELEVATION | FCU | FAN COIL UNIT |
| BFP | BACKFLOW PREVENTER | FD | FLOOR DRAIN |
| BHP | BRAKE HORSEPOWER | FF | FINAL FILTER |
| BOD | BOTTOM OF DUCT | FM | FLOW METER |
| BOP | BOTTOM OF PIPE | FOP | FUEL OIL PUMP |
| BSC | BIOLOGICAL SAFETY CABINETS | FOT | FLAT ON TOP |
| BT | BLOWOFF TANK | FPM | FEET PER MINUTE |
| BTU | BRITISH THERMAL UNIT | FPS | FEET PER SECOND |
| BTUH | BRITISH THERMAL UNIT PER HOUR | FPU | FAN POWERED TERMINAL UNIT |
| | | FRP | FIBER REINFORCED POLYESTER |
| CV | CONSTANT AIR VOLUME | FS | FLOW SWITCH |
| CC | COOLING COIL | FSTAT | FREEZESTAT |
| CD | COOLING COIL CONDENSATE DRAIN | FT | FEET |
| CFH | CUBIC FEET PER HOUR | FT WC | FEET OF WATER COLUMN |
| CFM | CUBIC FEET PER MINUTE | FT-LB | FOOT-POUND |
| CFM | CUBIC FEET PER MINUTE | FV | FACE VELOCITY |
| CH | CHILLER | GA | GAUGE |
| CHP | CHILLED WATER PUMP | GAL | GALLONS |
| CHS/R | CHILLER WATER | GH | GRAVITY HOOD |
| CL | CENTER LINE | GPD | GALLONS PER DAY |
| CM | CUBIC METER | GPH | GALLONS PER HOUR |
| CM/S | CUBIC METER PER SECOND | GPM | GALLONS PER MINUTE |
| CO | CLEAN OUT | GPR | GAS PRESSURE REGULATOR |
| COMP | COMPRESSOR UNIT | GS | GALVANIZED STEEL |
| COP | COEFFICIENT OF PERFORMANCE | | |
| COR | CONTRACTING OFFICER REPRESENTATIVE | H | HUMIDIFIER |
| CP | CONDENSATE PUMP | HB | HOSE BIBB |
| CST | CONDENSATE STORAGE TANK | HC | HEATING COIL |
| CSG | CLEAN STEAM GENERATOR | HD | HOOD |
| CT | COOLING TOWER | HOA | HAND/OFF/AUTOMATIC |
| CU | CONDENSING UNIT | HP | HEAT PUMP |
| CUH | CABINET UNIT HEATER | HP | HORSEPOWER |
| CV | CONSTANT VOLUME | HRC | HEAT RECOVERY COIL |
| CWP | CONDENSER WATER PUMP | HRP | HYDRONIC RADIANT (CEILING) PANEL |
| | | HRW | HEAT RECOVERY WHEEL |
| DDC | DIRECT DIGITAL CONTROLS | HSTAT | HUMIDISTAT |
| DIA | DIAMETER | HVU | HEATING AND VENTILATING UNIT |
| DI | DEIONIZED WATER | HWC | HOT WATER COIL |
| DP | DEW POINT TEMPERATURE | HWP | HEATING HOT WATER PUMP |
| | | HTX | HEAT EXCHANGER |
| DPS | DIFFERENTIAL PRESSURE SENSOR | HZ | HERTZ |
| DX | DIRECT EXPANSION | I/O | INPUT/OUTPUT |
| | | IAQ | INDOOR AIR QUALITY |
| EA | EXHAUST AIR | IBT | INVERTED BUCKET TRAP |
| EAT | ENTERING AIR TEMPERATURE | ID | INSIDE DIAMETER |
| EC | EVAPORATIVE COOLER | IFB | INTEGRAL FACE AND BYPASS |
| ECC | ENGINEERING CONTROL CENTER | IN | INCHES |
| EDH | ELECTRIC DUCT HEATER | IN HG | INCHES OF MERCURY |
| EER | ENERGY EFFICIENCY RATIO | IN WC | INCH WATER COLUMN |
| EF | EXHAUST FAN | IN WG | INCH WATER GAUGE |
| ES | EMERGENCY GAS SHUTOFF | IN-LB | INCH-POUND |
| EGT | ENTERING GLYCOL TEMPERATURE | IPLV | INTEGRATED PART LOAD VALUE |
| EH | EXHAUST HOOD | | |

| MECHANICAL SHEET INDEX | |
|------------------------|---|
| SHEET NUMBER | DRAWING TITLE |
| M0.1 | MECHANICAL LEGEND, ABBREVIATIONS, AND NOTES |
| M0.2 | MECHANICAL SPECIFICATIONS |
| M0.3 | MECHANICAL SCHEDULES |
| M0.4 | HVAC DETAILS |
| M0.5 | MECHANICAL DETAILS |
| M0.6 | MECHANICAL DETAILS |
| M0.7 | MECHANICAL DETAILS |
| M1.1 | MECHANICAL FLOOR PLAN |
| M1.2 | MECHANICAL ROOF PLAN |

| | | | |
|-------|-------------------------------------|-------|--|
| IRH | INFRARED HEATER | PRV | PRESSURE REGULATING VALVE |
| IU | INDUCTION UNIT | PSI | POUNDS PER SQUARE INCH |
| | | PSIA | POUNDS PER SQUARE INCH - ABSOLUTE |
| JB | JUNCTION BOX | PSIG | POUNDS PER SQUARE INCH - GAGE |
| JL | JUSTIFIED LEFT | PTAC | PACKAGED TERMINAL AIR CONDITIONER |
| JR | JUSTIFIED RIGHT | | |
| KG | KILOGRAM | QNTY | QUANTITY |
| KG/HR | KILOGRAM PER HOUR | RA | RETURN AIR |
| kPa | KILOPASCAL | RAF | RETURN AIR FAN |
| KW | KILOWATT | RAT | RETURN AIR TEMPERATURE |
| KWH | KILOWATT HOUR | RD | REFRIGERANT DISCHARGE |
| LOOP | LOCK ONLY OPEN POSITION | REA | RELIEF AIR |
| LVG | LEAVING | RF | RETURN FAN |
| LVR | LOUVER | RH | RELATIVE HUMIDITY |
| LWT | LEAVING WATER TEMPERATURE | RHC | REHEAT COIL |
| M | METER, SI UNIT | RLA | RUN LOAD AMPERE |
| M/S | METERS PER SECOND | RO | REVERSE OSMOSIS |
| | | RPM | REVOLUTIONS PER MINUTE |
| MA | MIXED AIR | RS/RL | REFRIGERANT SUCTION AND REFRIGERANT LIQUID |
| MAT | MIXED AIR TEMPERATURE | RTU | ROOF TOP UNIT |
| MAU | MAKE-UP AIR UNIT | RV | RELIEF VALVE |
| MAV | MANUAL AIR VENT | | |
| MAX | MAXIMUM | SA | SUPPLY AIR |
| MB | MIXING BOX | SAT | SUPPLY AIR TEMPERATURE |
| MBH | 1,000 BTUH | SCFM | STANDARD CUBIC FEET PER MINUTE |
| MCA | MINIMUM BRANCH CIRCUIT AMPACITY | SCR | SILICON CONTROLLED RECTIFIER |
| MER | MECHANICAL EQUIPMENT ROOM | SEA | SMOKE EXHAUST AIR |
| MERV | MINIMUM EFFICIENCY REPORTING VALUE | SEN | SENSIBLE HEAT |
| MH | MANHOLE | SF | SUPPLY FAN |
| MHP | MOTOR HORSEPOWER | SHC | STEAM HEATING COIL |
| MIN | MINIMUM | SI | SQUARE INCHES |
| MM | MILLIMETER | SP | STATIC PRESSURE |
| MOCOP | MINIMUM OVERCURRENT PROTECTION | SP GR | SPECIFIC GRAVITY |
| MOV | MOTOR OPERATED VALVE | SPS | STATIC PRESSURE SENSOR |
| MTD | MEAN TEMPERATURE DIFFERENCE | SQ FT | SQUARE FOOT (FEET) |
| | | SS | STAINLESS STEEL |
| NA | NOT APPLICABLE | SSR | SOLID SEPARATOR |
| NC | NOISE CRITERIA | ST | STEAM TRAP |
| NC | NORMALLY CLOSED | | |
| NG | NATURAL GAS | TAB | TESTING, ADJUSTING, BALANCE |
| NO | NORMALLY OPEN | TDH | TOTAL DYNAMIC HEAD |
| NOM | NOMINAL | TDS | TOTAL DISSOLVED SOLIDS |
| NPLV | NON-STANDARD PART LOAD VALUE | TSP | TOTAL STATIC PRESSURE |
| NPSH | NET POSITIVE SUCTION HEAD | TSTAT | THERMOSTAT |
| NPSHA | NET POSITIVE SUCTION HEAD AVAILABLE | TU | TERMINAL UNIT |
| NPSHR | NET POSITIVE SUCTION HEAD REQUIRED | | |
| NTS | NOT TO SCALE | UC | UNDER CUT |
| | | UH | UNIT HEATER |
| OA | OUTSIDE AIR | | |
| OAD | OUTDOOR AIR DAMPER | V | VENT |
| OD | OUTSIDE DIAMETER | VAV | VARIABLE AIR VOLUME |
| | | VFD | VARIABLE FREQUENCY DRIVE |
| P | PUMP | VP | VACUUM PUMP |
| Pa | PASCAL | VR | VACUUM (STEAM CONDENSATE) RETURN |
| PCF | POUNDS PER CUBIC FOOT (FEET) | | |
| PD | PRESSURE DROP | W | WATTS |
| PF | PRE-FILTER | Wb | WET-BULB (TEMPERATURE) |
| PG | PRESSURE GAGE | WFMS | WATER FLOW MEASURING STATION |
| PHC | PREHEAT COIL | WG | WATER GAGE |
| PPM | PARTS PER MILLION | WPD | WATER PRESSURE DROP |
| PRS | PRESSURE REGULATING (VALVE) STATION | | |
| | | YR | YEAR |

| HVAC SYMBOLS AND ABBREVIATIONS | |
|--------------------------------|---|
| | SQUARE DUCT SIZE TAG (WIDTH x HEIGHT) |
| | OVAL DUCT SIZE TAG (WIDTH / HEIGHT) |
| | ROUND DUCT SIZE TAG (DIAMETER) |
| | EXISTING DUCT TAG |
| | DUCT BEING DEMOLISHED |
| | RECTANGULAR SUPPLY/OUTSIDE AIR DUCT RISE |
| | ROUND SUPPLY/OUTSIDE AIR DUCT RISE |
| | RECTANGULAR RETURN/TRANSFER AIR DUCT RISE |
| | ROUND RETURN/TRANSFER AIR DUCT RISE |
| | RECTANGULAR EXHAUST/RELIEF AIR DUCT RISE |
| | ROUND EXHAUST/RELIEF AIR DUCT RISE |

| GRILLES, REGISTERS & DIFFUSERS TAG | |
|------------------------------------|------------------------------------|
| | SUPPLY DIFFUSER |
| | RETURN GRILLE |
| | EXHAUST GRILLE |
| | (E)LINEAR BAR GRILLE |
| | # 48"x2 1/2" / 400 |
| | TYPE (SEE SCHEDULE) |
| | ACTIVE SLOT LENGTH (PLENUM LENGTH) |
| | CFM |

| MECHANICAL EQUIPMENT TAGS | |
|---------------------------|-------------------------|
| | EQUIPMENT TAG (E)TU-XX |
| | VAV BOX |
| | EQUIPMENT TAG (E)RTU-XX |

| DATA DEVICE TAGS AND ABBREVIATIONS | | |
|------------------------------------|---------------|-------------------------------|
| DESCRIPTION | SYMBOL | DESCRIPTION |
| CARBON DIOXIDE SENSOR | CO2 TH RTU-XX | TEMPERATURE & HUMIDITY SENSOR |
| CARBON MONOXIDE SENSOR | CO DIS | DISPLAY |
| NITROGEN DIOXIDE SENSOR | NO2 T TU-XX | THERMOSTAT |
| HUMIDITY SENSOR | HS S | SENSOR |
| HUMIDISTAT | H PS | PRESSURE SENSOR |

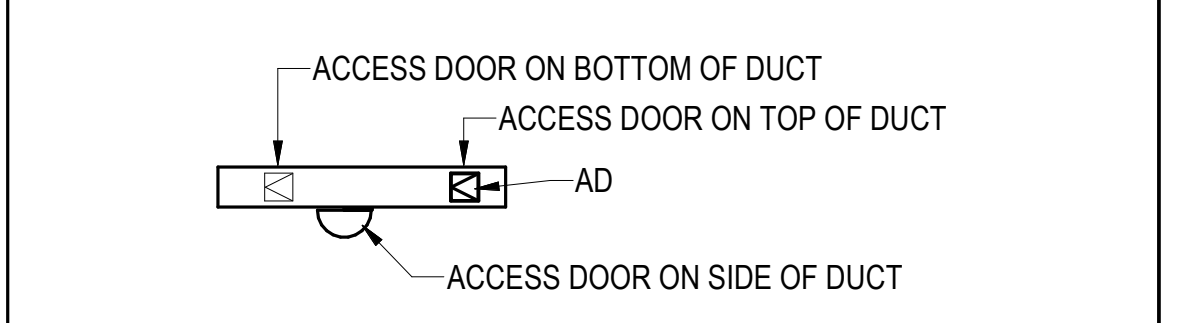
| DAMPER TAGS AND ABBREVIATIONS | |
|-------------------------------|-----------------------------------|
| | FIRE DAMPER FD |
| | SMOKE DAMPER SD |
| | AUTOMATIC VOLUME DAMPER AVD |
| | MANUAL VOLUME DAMPER MVD |
| | BACKDRAFT DAMPER BDD |
| | COMBINATION FIRE/SMOKE DAMPER FSD |

| SHEET NOMENCLATURE | |
|--------------------------------------|----------------------|
| SERIES | (S) STEAM |
| 0 - SYMBOLS AND NOTES | (H) HVAC |
| 1 - PLAN VIEWS | (P) PIPING |
| 3 - ELEVATIONS AND SECTIONS | (D) DEMO |
| 4 - LARGE SCALE - PLANS AND SECTIONS | MECHANICAL - M P ### |
| 5 - SCHEMATICS AND DETAILS | SERIES |
| 6 - SCHEDULES | |
| 8 - CONTROLS | |

NOTE
ALL OF GENERAL NOTES ON THIS SHEET ARE TO BE APPLIED TO ALL OTHER DRAWINGS IN THIS SET. THE SYMBOLS AND ABBREVIATIONS SHOWN ON THIS SHEET MAY OR MAY NOT BE USED IN THIS SET OF DRAWINGS.

| PIPING SYMBOLS AND ABBREVIATIONS | |
|----------------------------------|--|
| | HWS HOT WATER HEATING SUPPLY |
| | HWR HOT WATER HEATING RETURN |
| | GHS GLYCOL-WATER HEATING SUPPLY |
| | GHR GLYCOL-WATER HEATING RETURN |
| | RS/RL REFRIGERANT SUCTION AND REFRIGERANT LIQUID |
| | CHS CHILLED WATER SUPPLY |
| | CHR CHILLED WATER RETURN |
| | MW MAKE-UP WATER |
| | D DRAIN PIPING |
| | CD CONDENSATE DRAIN |
| | G NATURAL GAS MAIN FUEL |
| | G(I) NATURAL GAS IGNITER FUEL |
| | SW SOFTENED WATER |
| | DCW DOMESTIC COLD WATER |
| | DHW DOMESTIC HOT WATER |
| | (E) 2" EXISTING PIPE TAG |
| | (E) 2" PIPE SIZE TAG (DIAMETER) |
| | PIPING BEING DEMOLISHED |

| GENERAL MECHANICAL SYMBOLS | |
|----------------------------|--------------------------------------|
| | REVISION NUMBER - SHOWN ON PLANS |
| | CONNECT NEW TO EXISTING |
| | LIMIT OF DEMOLITION |
| | NUMBER OF DETAIL ON SHEET |
| | NUMBER OF SHEET WHERE DETAIL APPEARS |
| | CONTINUATION SYMBOL |
| | ROOM NAME AND NUMBER |
| | AREA NOT IN CONTRACT |
| | NEW WORK NOTES |
| | DEMOLISHED WORK NOTES |



102 Sammy Court
WARNER ROBINS, GEORGIA 31088
glnarch@outlook.com (478)-365-8976

169 New Street, Macon, GA 31201
(478)741-4632 - T. E. project # 25-106
www.totalengineers.com
GA COA NO # PEF009195 EXP: 08/30/2026

STAMP INVALID UNLESS SIGNED

New Facility
Hampton Travel Center
Hwy 81 / Parcel # 019-02031002 Hampton, Georgia

| MECHANICAL LEGEND, ABBREVIATIONS, AND NOTES | |
|---|------------|
| JOB NO.: | 02511 |
| DRAWN BY: | ACC |
| CHECKED BY: | KP |
| DESCRIPTION: | SCH-REVIEW |
| DATE: | 00.0025 |
| DESCRIPTION: | DD-REVIEW |
| DATE: | 00.0025 |
| DESCRIPTION: | CD-REVIEW |
| DATE: | 12.19.25 |
| DESCRIPTION: | BID-CONST |
| DATE: | 00.0025 |
| REVISIONS: | |
| 1 | |
| 2 | |
| 3 | |
| 4 | |
| 5 | |
| 6 | |
| 7 | |

THESE DRAWINGS ARE THE PROPERTY OF GM ARCHITECT AND ARE NOT TO BE REPRODUCED OR REUSED WITHOUT PERMISSION AND CREDIT.
COPYRIGHT: © 2025

SHEET

M0.1

OF