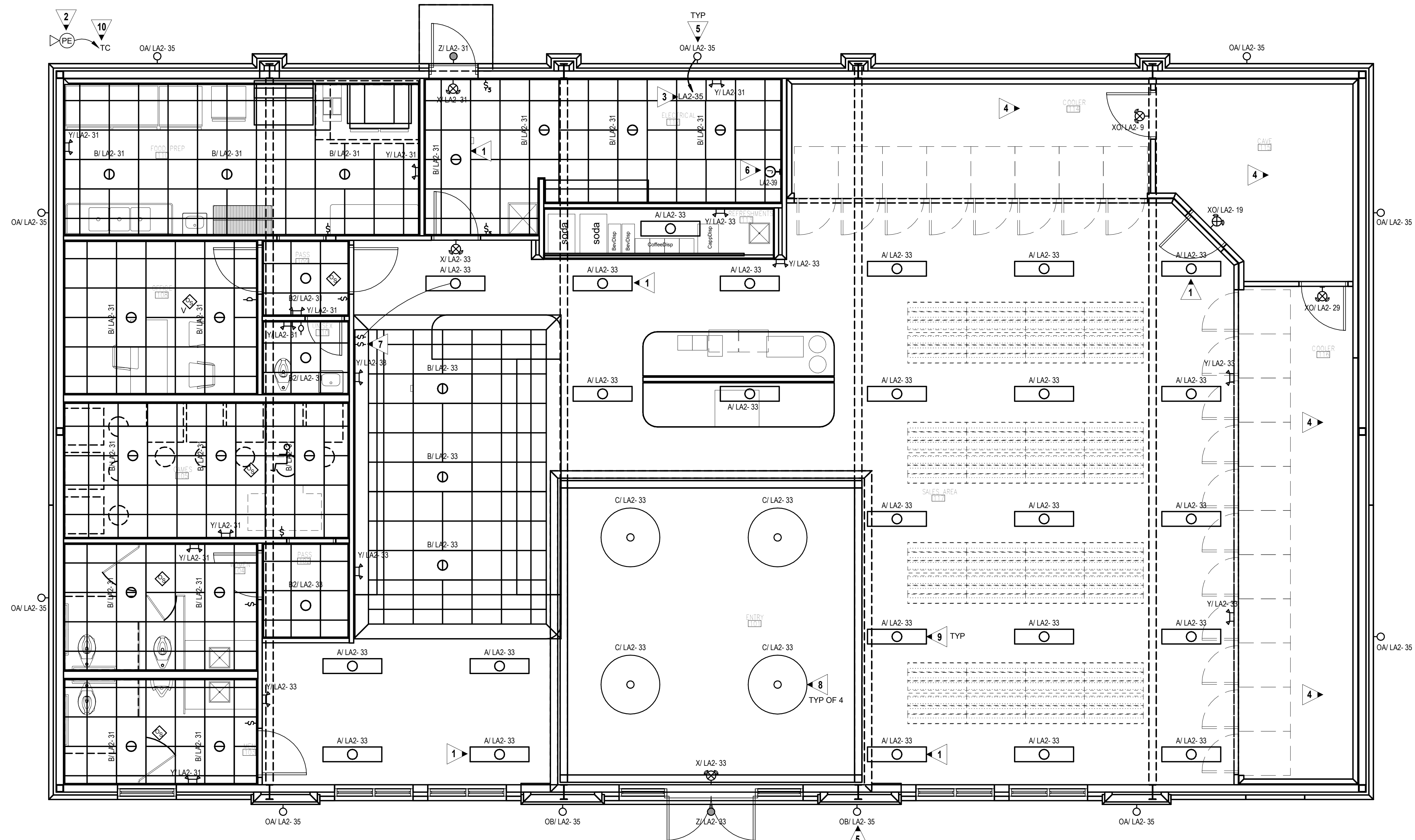


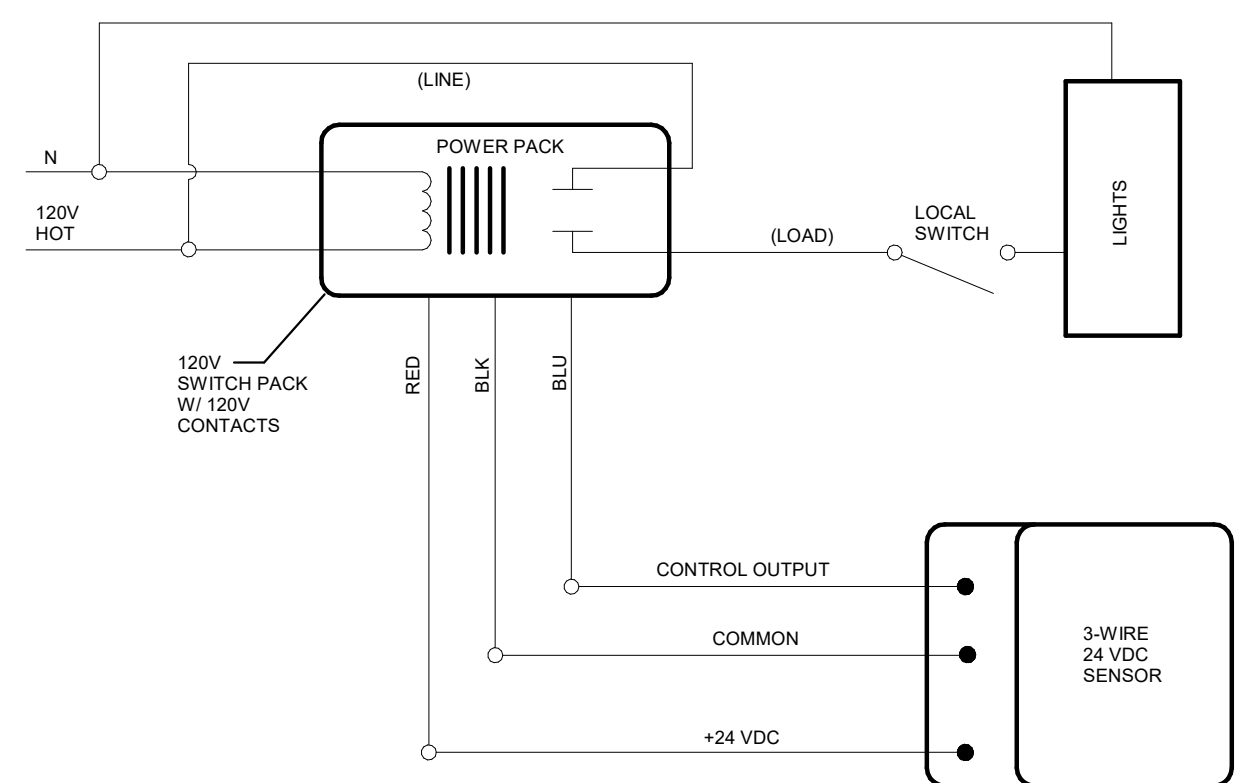
JOB NO.:	02502
DRAWN BY:	AM
CHECKED BY:	JM
DESCRIPTION:	ISSUE FOR CONSTRUCTION
DATE:	12.17.25
DESCRIPTION:	
DATE:	
DESCRIPTION:	
DATE:	
REVISIONS:	
1	03.13.26
2	
3	
4	
5	
6	
7	

THESE DRAWINGS ARE THE PROPERTY OF GM ARCHITECT AND ARE NOT TO BE REPRODUCED OR REUSED WITHOUT PERMISSION AND CREDIT.  
COPYRIGHT: © 2025

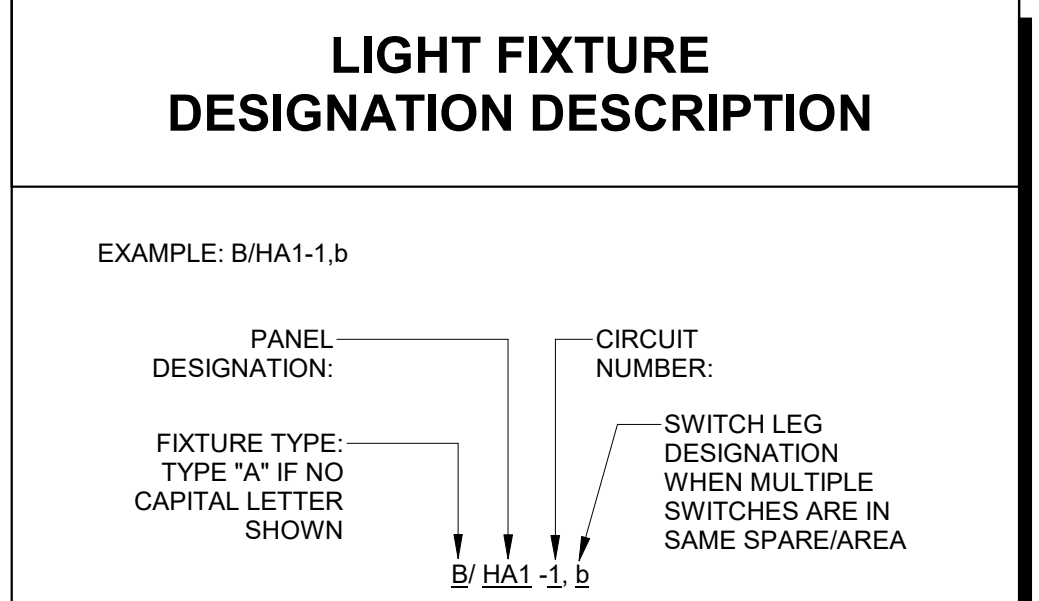
SHEET



**1 FLOOR PLAN - LIGHTING**  
E2.1 SCALE: 1/4" = 1'-0"



**2 WIRING DIAGRAM-SENSOR CONTROL-LIGHTING**  
E2.1 NO SCALE



PROVIDE ALL BRANCH CIRCUIT CONDUIT/CONDUCTORS AS NECESSARY TO CONNECT ALL DEVICES SHOWN ON THE CIRCUIT. PROVIDE DEDICATED NEUTRALS FOR ALL CIRCUITS.

**GENERAL NOTES:**

- A. THIS PLAN INDICATES AREAS TO BE CONTROLLED BY MOTION SENSORS. SINCE COVERAGES AND DEVICES VARY BETWEEN MANUFACTURERS IT SHALL BE THE CONTRACTOR'S RESPONSIBILITY TO COORDINATE PROPER DEVICE LOCATION, ORIENTATION AND QUANTITIES WITH THE MANUFACTURER OF THE SYSTEM BEING INSTALLED TO MEET THE SPECIFIED CRITERIA.
- B. ALL AREA'S OF THIS PLAN REQUIRE OCCUPANCY SENSOR COVERAGE (EXCEPT FOR MECHANICAL AND ELECTRICAL ROOMS). SEE LIGHTING SENSOR LEGEND E0.1 (TYPICAL).
- C. THERE ARE NO SWITCHPACKS SHOWN ON THIS PLAN. PROVIDE SWITCHPACKS AS REQUIRED WITH SENSORS. SWITCHPACKS ARE TO BE RATED AT 20A. PROVIDE ONE SWITCHPACK PER 20A LIGHTING CIRCUIT OR PER INDIVIDUAL AREA BEING CONTROLLED.
- D. CEILING SENSORS ARE TO BE MOUNTED AWAY FROM ANY STRONG AIRFLOW. COORDINATE LOCATION OF SENSOR WITH MECHANICAL AND LIGHTING PLANS.
- E. ALL SENSORS SHALL BE CEILING MOUNTED EXCEPT WHERE CEILING HEIGHTS EXCEED 15 FT.-0 IN. PROVIDE SENSOR WITH ADAPTOR PLATE FOR JUNCTION BOX MOUNTING (JUNCTION BOX SHALL BE CONCEALED ABOVE ACCESSIBLE CEILING) JUNCTION BOX SHALL BE SUPPORTED FROM STRUCTURE UTILIZING A 3/8 IN. THREADED ROD. WHERE CEILING HEIGHTS EXCEED 15 FT.-0 IN. WALL MOUNT SENSORS AT 12 FT.-0 IN.
- F. PROVIDE UNSWITCHED HOT CONDUCTOR TO ALL EMERGENCY AND EXIT LIGHTS.

**KEYED NOTES:**

- 1 UNSWITCHED NIGHT LIGHT FIXTURE.
- 2 LOCATE P.E. CELL FACING NORTH. CLEAR OF MAN MADE LIGHT SOURCES. J-BOX TO HOUSE P.E. CELL SHALL BE RECESSED MOUNTED WITH STAINLESS STEEL COVER.
- 3 ROUTE VIA 10 POLE EXTERIOR LIGHTING CONTACTOR/TIME CLOCK LOCATED ADJACENT PANEL. PHOTO CELL SHALL CONTROL DUSK TILL DAWN OPERATION. TIME CLOCK SHALL INTERRUPT CIRCUIT DURING MIDNIGHT HOURS. SEE KEYED NOTE 6. USE #10'S ENTIRE CIRCUIT. PROVIDE MANUAL OVERRIDE SWITCH ADJACENT TIME CLOCK.
- 4 LIGHTING AND SWITCHING PROVIDED IN COOLER WITH UNIT. SEE SHEET E3.1 FOR POWER FEED TO UNIT. PROVIDE EXIT/EGRESS LIGHTS SHOWN. PROVIDE WYE SEAL OFF FITTINGS FOR ALL CONDUIT ENTERING OR LEAVING COOLERS.
- 5 COORDINATE EXACT MOUNTING HEIGHT WITH ARCHITECT PRIOR TO ROUGH-IN.
- 6 PROVIDE 365 DAY DIGITAL PROGRAMMABLE TYPE ELECTRONIC CONTROL TIME CLOCK WITH MINIMUM 10 CONTACTS AND MINIMUM 96 ON/OFF EVENTS PER WEEK. CONTACTS RATED FOR MINIMUM 30 AMPS AND 208 VOLTS. PROVIDE WITH NEMA TYPE 1 ENCLOSURE AND CAPACITOR BACKUP. PROVIDE WITH AUTO-ON-OFF FUNCTION. PROVIDE AUXILIARY INPUT FROM PHOTO CELL FOR OVERRIDE ON OR OFF CONTROL.
- 7 SWITCH TO OVERRIDE STORE SIGNAGE PHOTOCELL.
- 8 FIXTURE PENDANT MOUNTED IN CEILING OF CLERESTORY ABOVE.
- 9 FIXTURE SURFACE MOUNTED TO BOTTOM OF TRUSS IN RETAIL SPACE. COORDINATE EXACT MOUNTING LOCATION WITH OWNER/ARCHITECT PRIOR TO ROUGH-IN.
- 10 ROUTE #12, 1/2 IN. C. TO LIGHTING CONTROL TIME CLOCK FOR AUXILIARY SWITCH CONTROL INPUT.