

ARCHITECT

STAMP INVALID UNLESS SIGNED

**EDC**  
ELECTRICAL DESIGN  
CONSULTANTS  
ELECTRICAL ENGINEERS  
MACON OFFICE - PROJECT # M25120  
edc1973.com



CONSULTANT

STAMP INVALID UNLESS SIGNED

FLOOR PLAN - POWER AND SYSTEMS

**New Facility**  
Hampton Travel Center

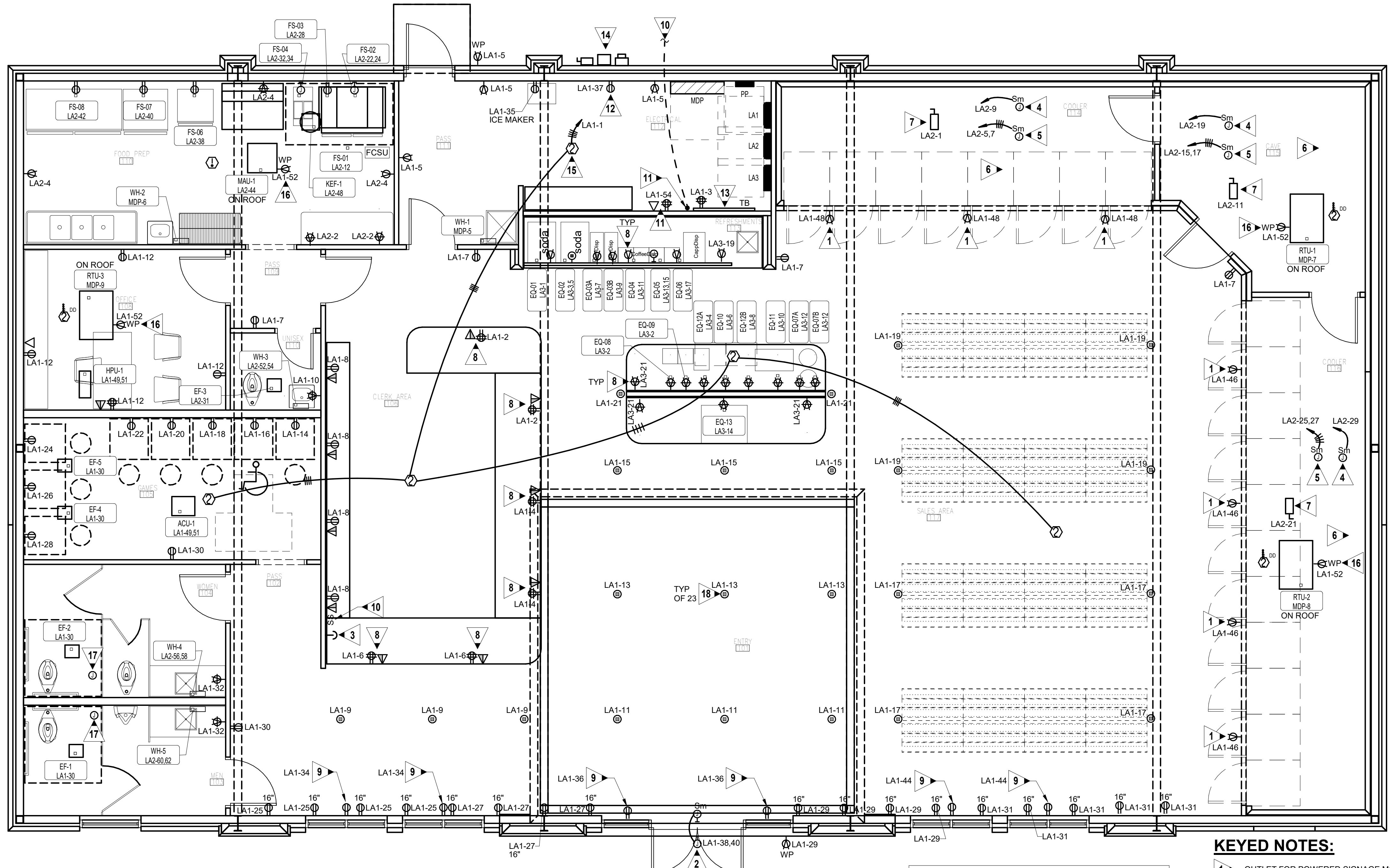
Hampton, Georgia 30228

Highway 81 / Parcel # 019-02031002

JOB NO.:	02502
DRAWN BY:	AM
CHECKED BY:	JM
DESCRIPTION:	ISSUE FOR CONSTRUCTION
DATE:	12.17.25
DESCRIPTION:	
DATE:	
DESCRIPTION:	
DATE:	
REVISIONS:	
1	03.13.26
2	
3	
4	
5	
6	
7	

THESE DRAWINGS ARE THE PROPERTY OF GM ARCHITECT AND ARE NOT TO BE REPRODUCED OR REUSED WITHOUT PERMISSION AND CREDIT.  
COPYRIGHT: © 2025

SHEET **E3.1**



NOTE: SEE E4.2 FOR FOOD PREP AND REFRESHMENT EQUIPMENT POWER SCHEDULES.

**1 FLOOR PLAN - POWER AND SYSTEMS**  
E3.1 SCALE: 1/4" = 1'-0"

**GENERAL NOTES:**

- ALL EXPOSED OUTLETS IN FOOD PREP AND SERVING AREA SHALL BE CAST METAL AND WATER PROOF.
- ALL FLEXIBLE CONDUIT SHALL BE WATERPROOF.
- WHERE FOOD PREP AND REFRESHMENTS EQUIPMENT SHOP DRAWINGS CALL FOR DIRECT CONNECTION AND A RECEPTACLE IS SHOWN ON THE DRAWING, PROVIDE RECEPTACLE, PLUG, AND CORDSET.
- INTERLOCK RANGE HOOD FIRE SUPPRESSION SYSTEM WITH SHUNT TRIP BREAKERS SERVING EQUIPMENT UNDER THE HOOD, SUCH THAT UPON SYSTEM ACTIVATION ALL POWER IS SHUT OFF. RANGE HOOD EXHAUST FAN SHALL REMAIN ON AND MAKE-UP AIR SHALL BE SHUT OFF.
- BEFORE ROUGHING IN ANY OUTLETS OR ORDERING ANY RECEPTACLES, PLUGS, CORD SETS, DISCONNECTS, OR ANY ITEMS NECESSARY FOR THE CONNECTION OF FOOD PREP AND REFRESHMENTS EQUIPMENT, THE CONTRACTOR SHALL CONSULT THE SHOP DRAWINGS FOR THE EQUIPMENT ACTUALLY BEING FURNISHED (UNDER THE CONTRACT OR BY THE OWNER) FOR THE PROJECT AND SHALL PROVIDE AND INSTALL DEVICES, CIRCUITS AND ANY OTHER APPURTENANCES COMPATIBLE WITH THE EQUIPMENT FURNISHED SHALL BE PROVIDED AT NO COST TO THE OWNER.
- ALL EXPOSED CONDUITS SHALL BE RIGID STEEL. ANY PROPOSED EXPOSED CONDUIT LOCATIONS MUST BE COORDINATED WITH ARCHITECT PRIOR TO ROUGH-IN. ALL EFFORT MUST BE MADE TO CONCEAL ALL CONDUIT ABOVE CEILINGS, IN WALLS, AND UNDER FLOORS.
- PROVIDE CORD AND PLUG FOR EACH PIECE OF FOOD PREP EQUIPMENT LOCATED BENEATH HOOD.
- ALL 20A RECEPTACLES IN FOOD PREP AND REFRESHMENTS AREAS SHALL BE GFCI TYPE OR SERVED VIA GFCI BREAKERS WHERE SHOWN.
- COORDINATE CORD AND PLUG REQUIREMENT FOR FOOD PREP AND REFRESHMENTS EQUIPMENT WITH EQUIPMENT PROVIDER.
- COORDINATE EXACT LOCATIONS OF ALL MECHANICAL EQUIPMENT. PRIOR TO ELECTRICAL ROUGH-IN.
- ALL FLEXIBLE CONDUIT SHALL BE METALLIC WATERPROOF.
- COORDINATE FINAL RECEPTACLE AND VOICE/DATA OUTLET LOCATIONS WITH ARCHITECTURAL CASEWORK AND OWNER PRIOR TO ROUGH-IN. NO EXCEPTIONS.
- COORDINATE EXACT CONDUIT REQUIREMENTS FOR THERMOSTATS TO ALL AIR HANDLING UNITS. SEE MECHANICAL DRAWINGS FOR EXACT LOCATIONS. PROVIDE OUTLET BOXES AND CONDUIT TO ABOVE CEILINGS FOR ALL THERMOSTATS.
- FIRE SEAL ALL FIREWALL PENETRATIONS.

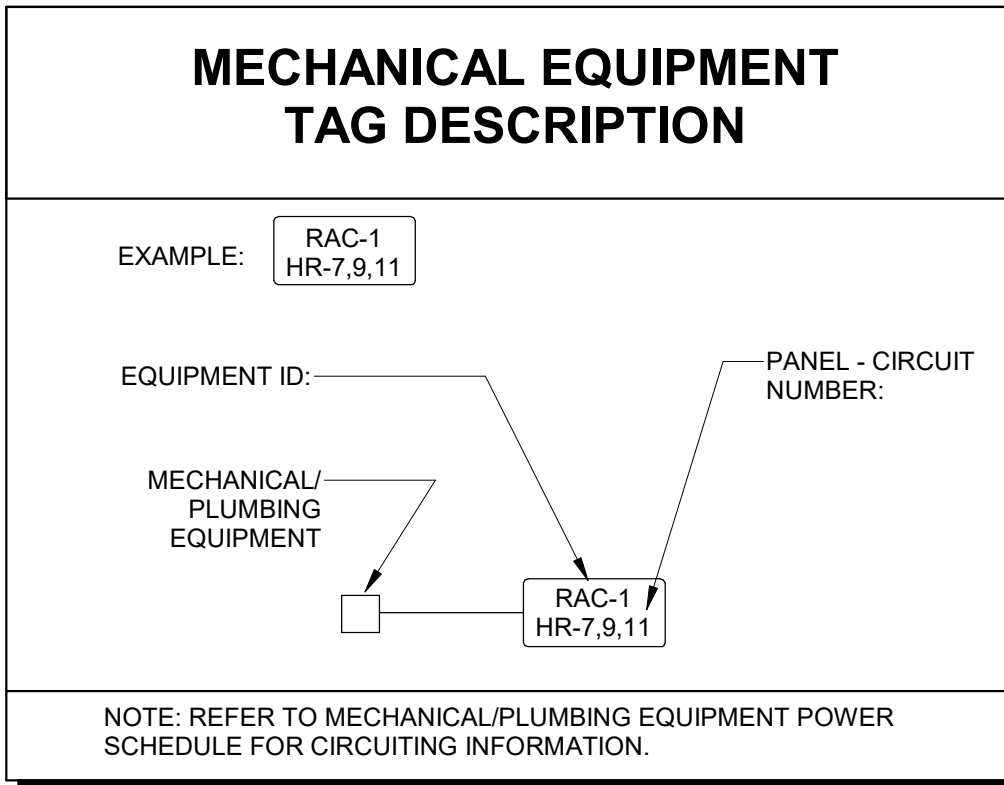
**MECHANICAL/PLUMBING EQUIPMENT POWER SCHEDULE**

ID	EQUIPMENT INFORMATION			CIRCUIT INFORMATION		CONDUIT & WIRE SIZE	DISC TYPE	NOTES
	VOLT	PH	MOCP	PANEL	NO.			
ACU-1	208 V	1	25.0 A	LA1	49.51	4#10,3/4"	60A/2P/3R	1,3
EF-1	120 V	1	20.0 A	LA1	30	3#12,1/2"	MRS	1,4
EF-2	120 V	1	20.0 A	LA1	30	3#12,1/2"	MRS	1,4
EF-3	120 V	1	20.0 A	LA2	31	3#12,1/2"	MRS	1,4
EF-4	120 V	1	20.0 A	LA1	30	3#12,1/2"	MRS	1
EF-5	120 V	1	20.0 A	LA1	30	3#12,1/2"	MRS	1
HPU-1	208 V	1	25.0 A	LA1	49.51	4#10,3/4"	60A/2P/3R	1,3
KEF-1	120 V	1	20.0 A	LA2	48	3#12,3/4"	MRS	1,6
MAU-1	120 V	1	25.0 A	LA2	44	3#10,3/4"	MRS	1,5,6
RTU-1	208 V	3	70.0 A	MDP	7	4#4,#BG,1 1/4"	100A/3P/3R	1,2
RTU-2	208 V	3	60.0 A	MDP	8	4#6,#10G,1"	60A/3P/3R	1,2
RTU-3	208 V	3	50.0 A	MDP	9	4#6,#10G,1"	60A/3P/3R	1,2
WH-1	208 V	3	125.0 A	MDP	5	4#1,#BG,2"	200A/3P	
WH-2	208 V	3	125.0 A	MDP	6	4#1,#BG,2"	200A/3P	
WH-3	208 V	1	30.0 A	LA2	52.54	4#10,3/4"	30A/2P	
WH-4	208 V	1	30.0 A	LA2	56.58	4#10,3/4"	30A/2P	
WH-5	208 V	1	30.0 A	LA2	60.62	4#10,3/4"	30A/2P	

- MECHANICAL/PLUMBING SCHEDULE NOTES:
- SEE MECHANICAL FOR EXACT CONTROL REQUIREMENTS.
  - DUCT SMOKE DETECTOR IN SUPPLY AIR DUCT PROVIDED BY MANUFACTURER. DETECTOR UNIT SHALL BE STAND ALONE, 120V. UNIT SHALL COME COMPLETE WITH SAMPLING TUBE AND REMOTE TEST/RESET STATION LOCATED IN MECH/ELEC ROOM IN ACCESSIBLE LOCATION. DETECTOR SHALL SHUT DOWN UNIT UPON SENSING SMOKE.
  - INDOOR UNIT POWERED VIA OUTDOOR UNIT. PROVIDE MOTOR RATED SWITCH AT INDOOR UNIT AND 3/4 INCH CONDUIT FOR MANUFACTURER LINESET.
  - INTERLOCK AND POWER FAN VIA LIGHTING CIRCUIT IN AREA SERVED. PROVIDE 15 MINUTE TIME DELAY RELAY. PROVIDE UNSWITCHED HOT AT FAN.
  - PROVIDE SHUNT TRIP BREAKER. FAN SHALL SHUT DOWN UPON ACTIVATION OF FIRE/SMOKE ALARM.
  - MAU-1 SHALL BE INTERLOCKED TO OPERATE WITH KEF-1. INTERLOCK THE MAKE UP AIR UNIT(MAU-1) WITH AUXILIARY STARTER IN KEF-1.

**KEYED NOTES:**

- OUTLET FOR POWERED SIGNAGE MOUNTED HIGH ON WALL ABOVE COOLER. COORDINATE EXACT HEIGHT WITH ARCHITECT AND OWNER PRIOR TO ROUGH-IN.
- J-BOX FOR POWER TO BUILDING SIGNAGE. PROVIDE J-BOX ON OTHER SIDE OF WALL FOR CONTROLS WITH A MOTOR RATED SWITCH FOR DISCONNECTING MEANS. PROVIDE 20A/2P BREAKER TO SERVE SIGNAGE. BUILDING PHOTOCELL TO CONTROL DUSK TO DAWN OPERATION AND A SWITCH LOCATED ADJACENT TO STORE LIGHT SWITCHES TO OVERRIDE PHOTOCELL. SEE KEYED NOTE 7 ON SHEET E2.1. COORDINATE EXACT LOCATION WITH OWNER/ARCHITECT PRIOR TO ROUGH-IN.
- RED MUSHROOM STYLE PUSHBUTTON. SHUNT TRIP TYPE BUTTON BEHIND LEXAN HINGED COVER 42 IN. A.F.F. FOR PUMP PANEL PP.
- TO COOLER DOORS, CONTROLS, LIGHTS, AND ALARMS.
- TO COOLER EVAP UNIT. PROVIDE P&S NEMA 4X NONMETALLIC DISCONNECT, 4#10,3/4".
- PROVIDE WYE SEAL-OFF FITTINGS FOR ALL CIRCUITS ENTERING, OR LEAVING, THE COOLER (INCLUDING LIGHTING).
- TO COOLER CONDENSING UNITS. DESIGN BASIS 208V/1PH, 60A/2P BREAKER, 60A/2P/3R FUSED DISCONNECT (SIZE FUSES PER EQUIPMENT MOCP), 3#6, #BG, 1 IN. C. COORDINATE EXACT POWER REQUIREMENTS AND LOCATION OF CONDENSING UNITS PRIOR TO ELECTRICAL ROUGH-IN.
- COORDINATE OUTLET LOCATIONS WITH CASEWORK. ALL CONDUITS TO BE CONCEALED.
- MOUNT RECEPTACLE 12 IN. TO CENTERLINE ABOVE TOP OF SHOW WINDOW.
- SWITCHES FOR CONTROL OF FANS EF-4 AND EF-5 SERVING GAME ROOM. COORDINATE EXACT LOCATION WITH MECHANICAL DRAWINGS AND CONTRACTOR PRIOR TO ROUGH-IN.
- OUTLETS FOR OWNER PROVIDED IT EQUIPMENT. COORDINATE EXACT ELECTRICAL REQUIREMENTS AND LOCATION WITH OWNER PRIOR TO ROUGH-IN.
- MOUNT RECEPTACLE AT 42 IN. A.F.F. FOR FUTURE PLUG-IN DEHUMIDIFIER. FIELD COORDINATE EXACT LOCATION WITH OWNER PRIOR TO ROUGH-IN.
- REFER TO TELEPHONE/DATA RISER, 5/E4.1.
- POWER COMPANY METER AND SERVICE DISCONNECT. SEE POWER RISER DIAGRAM 1/E4.1.
- CIRCUIT ALL FIRE ALARM DETECTORS TOGETHER, PROVIDING 4#12 CONDUCTORS BETWEEN ALL DEVICES. ALL DEVICES ARE TO GO IN TO ALARM MODE IF ONE DEVICE IS ACTIVATED.
- ROOF TOP RECEPTACLE. MOUNT HARD TO UNIT CLEAR OF ACCESS PANELS. ROUTE BRANCH CIRCUIT THRU CURB PROVIDED FOR UNIT (NOT THRU DRIP PAN).
- JUNCTION BOX AND CIRCUITRY FOR FLUSH VALVES MOUNTED ABOVE ACCESSIBLE CEILING. CONNECT TO URINAL AND WATER CLOSETS FLUSH VALVES AS DIRECTED BY PLUMBING CONTRACTOR. COORDINATE WITH PLUMBING CONTRACTOR PRIOR TO ROUGH-IN.
- FLOOR MOUNTED OUTLET, COORDINATE EXACT LOCATIONS WITH ARCHITECT AND OWNER PRIOR TO ROUGH-IN.



PROVIDE ALL BRANCH CIRCUIT CONDUIT/CONDUCTORS AS NECESSARY TO CONNECT ALL DEVICES SHOWN ON THE CIRCUIT. PROVIDE DEDICATED NEUTRALS FOR ALL CIRCUITS.