

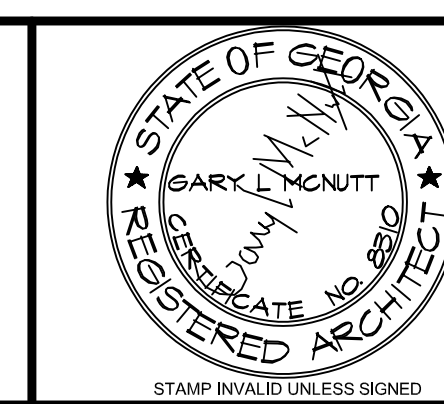
GENERAL DEMOLITION NOTES

- A. ALL DEMOLITION WORK SHALL BE DONE IN ACCORDANCE WITH THE CURRENT EDITIONS OF THE CODES LISTED ON SHEET ALS1.1 AND CURRENT EDITIONS OF ALL OTHER APPLICABLE LOCAL CODES, ORDINANCES, SUBDIVISION REGULATIONS, AND COVENANTS AND REQUIREMENTS.
- B. REMOVE OF DEMOLITION ITEMS MEANS DEMOLITION, REMOVAL AND LEGALLY TRANSPORTING AND DISPOSING OFF-SITE ALL DEBRIS, RUBBISH AND OTHER MATERIALS RESULTING FROM DEMOLITION OPERATIONS.
- C. IF HAZARDOUS MATERIALS ARE ENCOUNTERED DURING DEMOLITION OPERATIONS, NOTIFY OWNER AND/OR ARCHITECT IMMEDIATELY.
- D. PROVIDE, ERECT AND MAINTAIN EFFECTIVE BARRICADES, DANGER SIGNALS AND SIGNS IN LOCATIONS WHERE REQUIRED FOR THE PROTECTION OF THE WORK AND THE SAFETY OF THE WORKERS AND THE PUBLIC.
- E. MAINTAIN EXISTING UTILITIES, INDICATED TO REMAIN, KEEP IN SERVICE AND PROTECT AGAINST DAMAGE DURING DEMOLITION OPERATIONS.
- F. PROVIDE MATERIALS, LABOR, AND EQUIPMENT NOT SPECIFICALLY INDICATED BUT NECESSARY FOR DEMOLITION AND PROPER INSTALLATION OF NEW MATERIALS AND PROPER COMPLETION OF THIS CONTRACT.

PLAN DEMOLITION NOTES

- 1. REMOVE EXISTING WINDOW, LOUVER, STOREFRONT, DOOR ASSEMBLIES, AND ASSOCIATED HARDWARE, ETC. AND DISPOSE OF OFF SITE.
- 2. SHORE AND BRACE EXISTING ROOF STRUCTURE AND REMOVE EXISTING WALL ASSEMBLY, INCLUDING ASSOCIATED DOOR AND WINDOW ASSEMBLIES THEREIN, AND DISPOSE OF OFF SITE.
- 3. REMOVE EXISTING BARN DOOR ASSEMBLY AND DISPOSE OF OFF SITE.
- 4. REMOVE EXISTING ELECTRICAL EQUIPMENT AND LIGHT FIXTURES AND ASSOCIATED CONDUIT, PANELS, SWITCHES, OUTLETS, ETC. AND DISPOSE OF OFF SITE.
- 5. REMOVE EXISTING ROOF DORMER, INCLUDING WINDOW UNIT, ETC., AND DISPOSE OF OFF SITE.
- 6. REMOVE A PORTION OF EXISTING STRUCTURE TO ALLOW INSTALLATION OF NEW AND DISPOSE OF OFF SITE.
- 7. REMOVE A PORTION OF EXISTING WALL TO ALLOW INSTALLATION OF NEW DOOR OR WINDOW ASSEMBLY AND DISPOSE OF OFF SITE.

GM
Architect
960 Sutton Road
FORSYTH, GEORGIA 31029
gary@gmarchitectllc.net
(478)-365-8976



ARCHITECT

CONSULTANT



SUNBELT
BUILDERS
10641 HIGHWAY 36
COVINGTON, GA 30014
770.786.3031

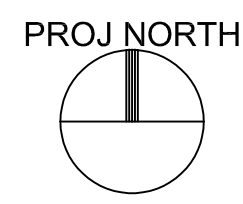
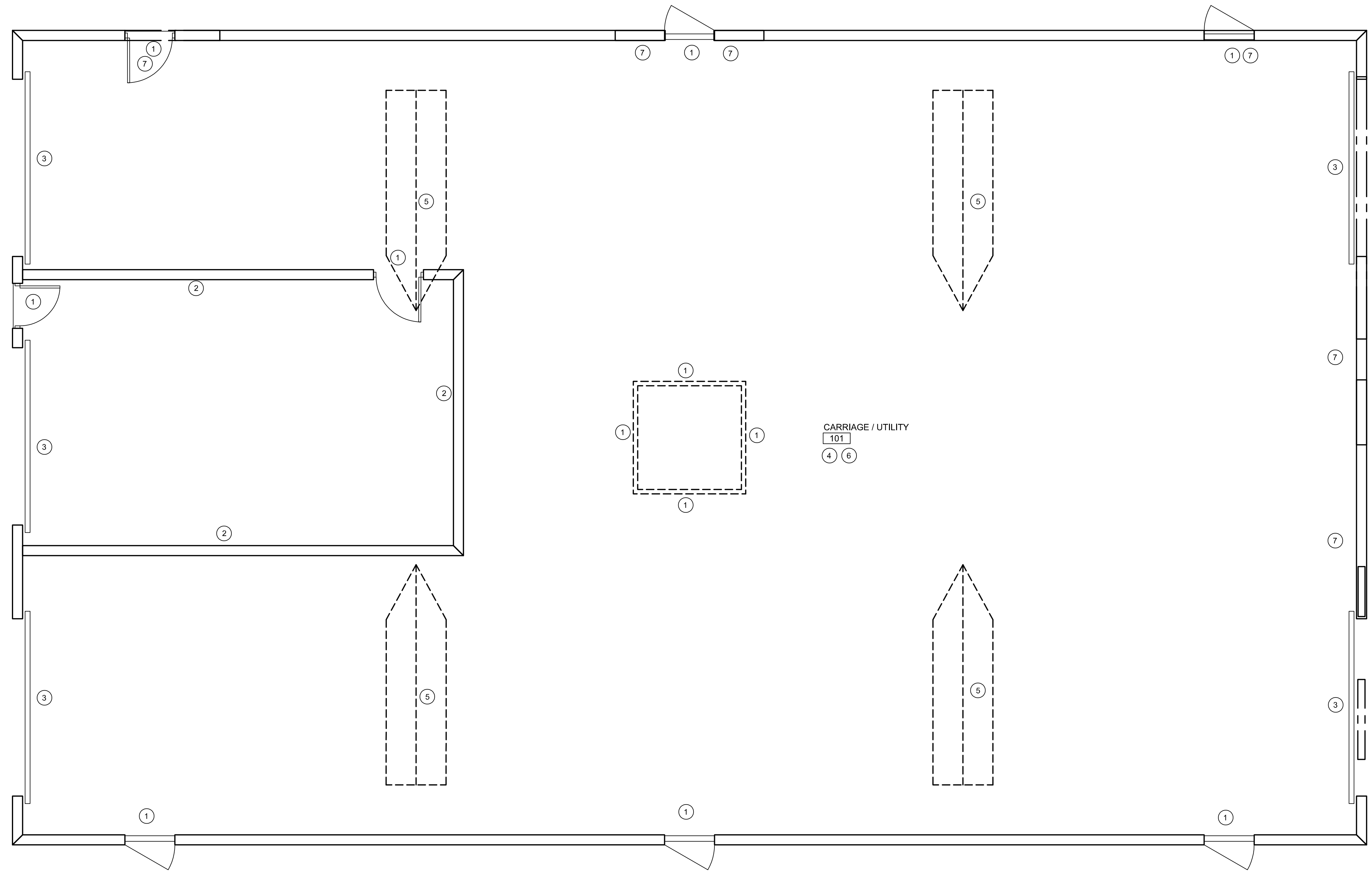
**Retrofit & Renovations for
Madison Methodist Church
Phase 2: Activity Barn**
1091 Confederate Highway
Madison, Georgia 30650

EQUIPMENT FLOOR PLAN

JOB NO.:	02801
DRAWN BY:	GM
CHECKED BY:	GM
DATE:	12.15.26
DESCRIPTION:	SCH-REVIEW-P2
DATE:	00.00.26
DESCRIPTION:	DD-REVIEW
DATE:	00.00.26
DESCRIPTION:	CD-REVIEW
DATE:	03.12.26
DESCRIPTION:	BID-CONSTRUCTION
DATE:	00.00.26
REVISIONS:	
1	00.00.26
2	
3	
4	
5	
6	
7	

THESE DRAWINGS ARE THE PROPERTY OF GMARCHITECT AND ARE NOT TO BE REPRODUCED OR REUSED WITHOUT PERMISSION AND CREDIT.
COPYRIGHT: © 2026

SHEET
AD1.1
OF



DEMOLITION PLAN: THE ACTIVITY BARN - PHASE 2
SCALE: 1/4" = 1'-0"

