

ELECTRICAL ENGINEERS
MACON OFFICE - PROJECT #: 26023
edc1973.com

FLOOR PLAN - POWER & SYSTEMS
Retrofit & Renovations for
Madison Methodist Church
Phase 2: Activity Barn

Madison, Georgia 30650

1091 Confederate Highway

JOB NO.: 02601

DRAWN BY: TW

CHECKED BY: JM

DESCRIPTION: SCH-REVIEW-P2

DATE: 12.15.25

DESCRIPTION: DD-REVIEW

DATE: 00.00.26

DESCRIPTION: CD-REVIEW

DATE: 03.01.26

DESCRIPTION: BID-CONSTRUCTION

DATE: 03.10.26

REVISIONS:

1 DATE

2 00.00.26

3

4

5

6

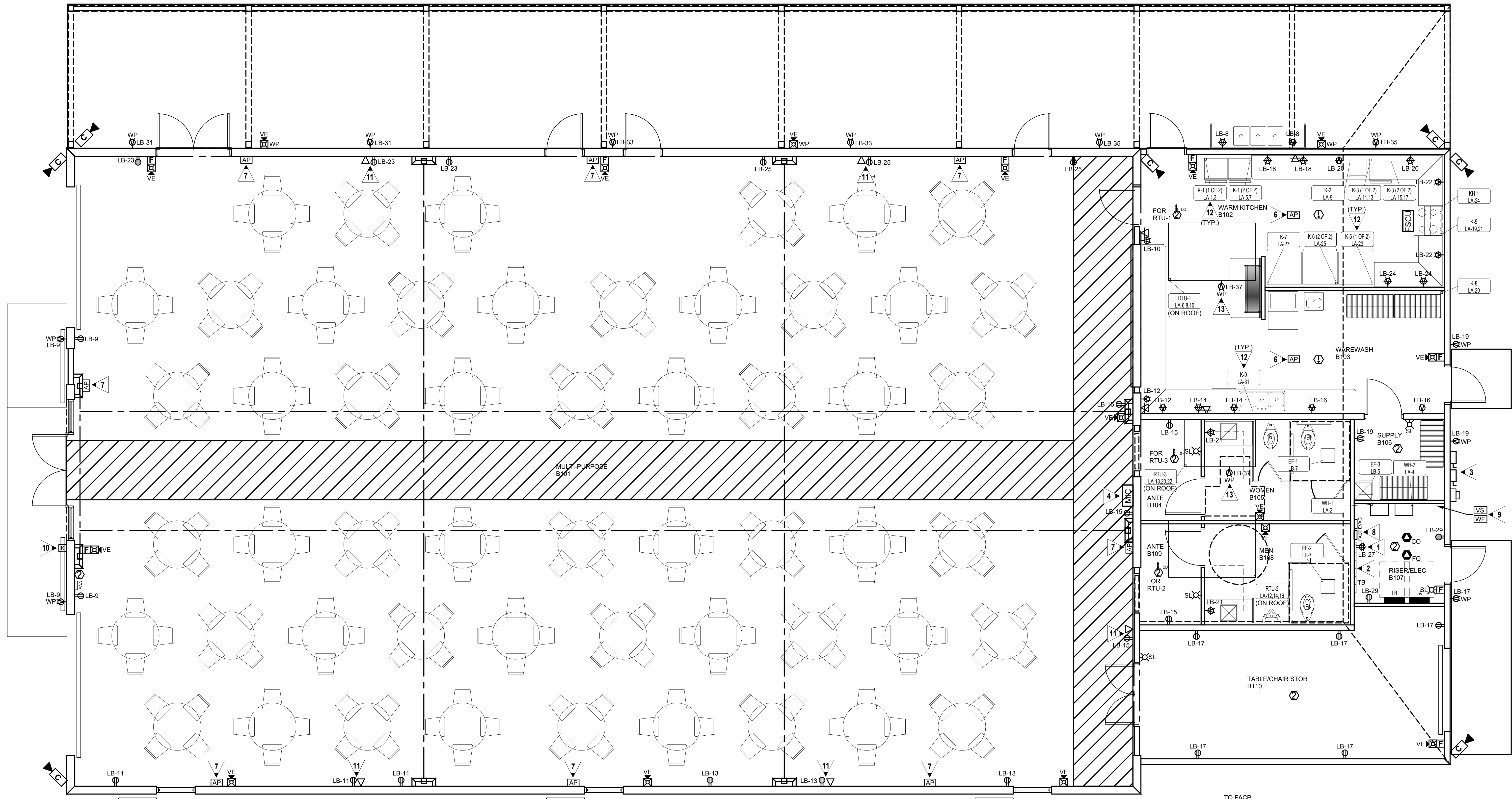
7

THESE DRAWINGS ARE THE PROPERTY OF GM ARCHITECT AND ARE NOT TO BE REPRODUCED OR REUSED WITHOUT PERMISSION AND CREDIT.
COPYRIGHT: © 2026

SHEET

E3.1

OF



1 FLOOR PLAN - POWER & SYSTEMS
E3.1 SCALE: 1/4" = 1'-0"

MECHANICAL EQUIPMENT TAG DESCRIPTION	
EXAMPLE: RAC-1 HR7.9.11	
EQUIPMENT ID:	PANEL - CIRCUIT NUMBER:
MECHANICAL/PLUMBING EQUIPMENT	RAC-1 HR7.9.11
NOTE: REFER TO MECHANICAL/PLUMBING EQUIPMENT POWER SCHEDULE FOR CIRCUITING INFORMATION.	

KITCHEN CONNECTION SCHEDULE												
ID	EQUIPMENT	EQUIPMENT INFORMATION				CIRCUIT INFORMATION			CONDUIT & WIRE		DISC	NOTES
		VOLT	PH	MCA	MOCP	PANEL	NO.	APPARENT LOAD	SIZE	TYPE		
K-1 (1 OF 2)	WARM OVEN	208 V	1	31.3 A	35.0 A	LA	1.3	5200 VA	1" C, 3/8, 1#10G	CORD & PLUG	1.2	
K-1 (2 OF 2)	WARM OVEN	208 V	1	31.3 A	35.0 A	LA	5.7	5200 VA	1" C, 3/8, 1#10G	CORD & PLUG	1.2	
K-2	MICROWAVE	120 V	1	15.3 A	20.0 A	LA	9	1460 VA	1/2" C, 2#12, 1#12G	CORD & PLUG	1.2	
K-3 (1 OF 2)	DBL OVEN	208 V	1	54.7 A	60.0 A	LA	11.13	9000 VA	1" C, 3/8, 1#8G	CORD & PLUG	1.2	
K-3 (2 OF 2)	DBL OVEN	208 V	1	54.7 A	60.0 A	LA	15.17	9000 VA	1" C, 3/8, 1#8G	CORD & PLUG	1.2	
K-5	RANGE	208 V	1	62.5 A	70.0 A	LA	19.21	10400 VA	1 1/4" C, 3/4, 1#8G	CORD & PLUG	1.2	
K-6 (1 OF 2)	REFRIGERATOR	120 V	1	10.0 A	20.0 A	LA	23	960 VA	1/2" C, 2#12, 1#12G	CORD & PLUG	1.2	
K-6 (2 OF 2)	REFRIGERATOR	120 V	1	10.0 A	20.0 A	LA	25	960 VA	1/2" C, 2#12, 1#12G	CORD & PLUG	1.2	
K-7	FREEZER	120 V	1	8.1 A	20.0 A	LA	27	780 VA	1/2" C, 2#12, 1#12G	CORD & PLUG	1.2	
K-8	ICE MAKER	120 V	1	6.4 A	20.0 A	LA	29	612 VA	1/2" C, 2#12, 1#12G	CORD & PLUG	1.2	
K-9	DISHWASHER	120 V	1	9.3 A	20.0 A	LA	31	890 VA	1/2" C, 2#12, 1#12G	CORD & PLUG	1.2	

KITCHEN SCHEDULE NOTES:
1. COORDINATE EXACT ELECTRICAL REQUIREMENTS WITH EQUIPMENT VENDOR PRIOR TO ROUGH-IN.
2. PROVIDE GFCI BREAKER.

GENERAL NOTES:

- COORDINATE EXACT LOCATIONS OF ALL MECHANICAL EQUIPMENT, PRIOR TO ELECTRICAL ROUGH-IN.
- VERIFY MOUNTING HEIGHTS OF ALL ELECTRICAL OUTLETS WITH ARCHITECTURAL ELEVATIONS AND MILLWORK DRAWINGS PRIOR TO ROUGH-IN.
- ALL FLEXIBLE CONDUIT SHALL BE METALLIC WATERPROOF.
- COORDINATE FINAL RECEPTACLE AND VOICE/DATA OUTLET LOCATIONS WITH ARCHITECTURAL CASEWORK AND OWNER PRIOR TO ROUGH-IN. NO EXCEPTIONS.
- COORDINATE EXACT CONDUIT REQUIREMENTS FOR THERMOSTATS TO ALL AIR HANDLING UNITS. SEE MECHANICAL DRAWINGS FOR EXACT LOCATIONS. PROVIDE OUTLET BOXES AND CONDUIT TO ABOVE CEILINGS FOR ALL THERMOSTATS.
- FIRE SEAL ALL FIREWALL PENETRATIONS.

GENERAL KITCHEN NOTES:

- ALL EXPOSED OUTLETS IN KITCHEN SHALL BE CAST METAL AND WATER PROOF.
- ALL FLEXIBLE CONDUIT SHALL BE WATERPROOF.
- WHERE KITCHEN EQUIPMENT SHOP DRAWINGS CALL FOR DIRECT CONNECTION AND A RECEPTACLE IS SHOWN ON THE DRAWINGS, PROVIDE RECEPTACLE, PLUG, AND CORSEST.
- BEFORE ROUGHING IN ANY OUTLETS OR ORDERING ANY RECEPTACLES, PLUGS, CORSESTS, DISCONNECTS, OR ANY ITEMS NECESSARY FOR THE CONNECTION OF KITCHEN EQUIPMENT, THE CONTRACTOR SHALL CONSULT THE SHOP DRAWINGS FOR THE EQUIPMENT ACTUALLY BEING FURNISHED (UNDER THE CONTRACT OR BY THE OWNER) FOR THE PROJECT AND SHALL PROVIDE AND INSTALL DEVICES, CIRCUITS AND ANY OTHER APPURTENANCES COMPATIBLE WITH THE EQUIPMENT FURNISHED SHALL BE PROVIDED AT NO COST TO THE OWNER.
- ALL EXPOSED CONDUIT SHALL BE RIGID STEEL.
- ALL 20A RECEPTACLES IN KITCHEN SHALL BE GFCI TYPE.
- COORDINATE CORD AND PLUG REQUIREMENTS FOR KITCHEN EQUIPMENT WITH EQUIPMENT PROVIDER.

KEYED NOTES:

- OUTLET FOR OWNER PROVIDED IT EQUIPMENT. COORDINATE EXACT ELECTRICAL REQUIREMENTS AND LOCATION WITH OWNER PRIOR TO ROUGH-IN.
- REFER TO TELEPHONE/DATA RISER, 5/E4.1.
- POWER COMPANY METER AND SERVICE DISCONNECTS. SEE POWER RISER DIAGRAM 1/E4.1.
- COORDINATE EXACT LOCATION OF REMOTE EVACUATION MICROPHONE WITH OWNER AND AHJ PRIOR TO ROUGH-IN.
- PROVIDE MONITORING OF DOUBLE CHECK VALVE AND POST INDICATOR VALVE FOR FIRE SPRINKLER SYSTEM. FIELD COORDINATE EXACT LOCATION.
- PROVIDE BISCUIT DATA OUTLET FLUSH MOUNTED IN CEILING FOR WIRELESS ACCESS POINT. COORDINATE EXACT LOCATION WITH OWNER/ARCHITECT PRIOR TO ROUGH-IN.
- PROVIDE BISCUIT DATA OUTLET FLUSH MOUNTED HIGH ON WALL FOR WIRELESS ACCESS POINT. COORDINATE EXACT LOCATION WITH OWNER/ARCHITECT PRIOR TO ROUGH-IN.
- LABEL CIRCUIT BREAKER SERVING FIRE ALARM CONTROL PANEL WITH RED NAME PLATE "FIRE ALARM CIRCUIT". LABEL FIRE ALARM CONTROL PANEL WITH CIRCUIT NUMBER SERVING PANEL. PROVIDE HASP LOCK FOR CIRCUIT BREAKER.
- PROVIDE FIRE ALARM SYSTEM MONITORING MODULES AT ALL FIRE SPRINKLER FLOW AND TAMPER SWITCHES AT FIRE RISER. COORDINATE EXACT LOCATIONS AND QUANTITIES WITH FIRE PROTECTION DRAWINGS. PROVIDE MONITORING MODULES AS REQUIRED.
- KNOX REMOTE POWER BOX. COORDINATE FINAL LOCATION WITH OWNER, ARCHITECT, AND AHJ. COORDINATE MOUNTING WITH ARCHITECT.
- PROVIDE DUPLEX RECEPTACLE AND DATA OUTLET MOUNTED HIGH ON WALL FOR TV. COORDINATE EXACT LOCATION OF TV WITH OWNER/ARCHITECT PRIOR TO ROUGH-IN.
- REFER TO KITCHEN CONNECTION SCHEDULE FOR EQUIPMENT AND CIRCUIT REQUIREMENTS FOR "K-#" EQUIPMENT.
- PROVIDE WEATHERPROOF GFI OUTLET IN METAL BOX AND FUSED DISCONNECT MOUNTED HARD TO UNIT. CLEAR OF ALL ACCESS PANELS. ROUTE FEEDERS INSIDE CURB PROVIDED FOR UNIT (NOT THRU DRIP PAN). PROVIDE 2#10, #10G, 3/4 IN. C. FOR RECEPTACLE CIRCUIT. SEE MECHANICAL CONNECTION SCHEDULE FOR DISCONNECT REQUIREMENTS. REFER TO DETAIL - ROOF TOP UNIT MOUNTED DISCONNECT, 5/E4.1.