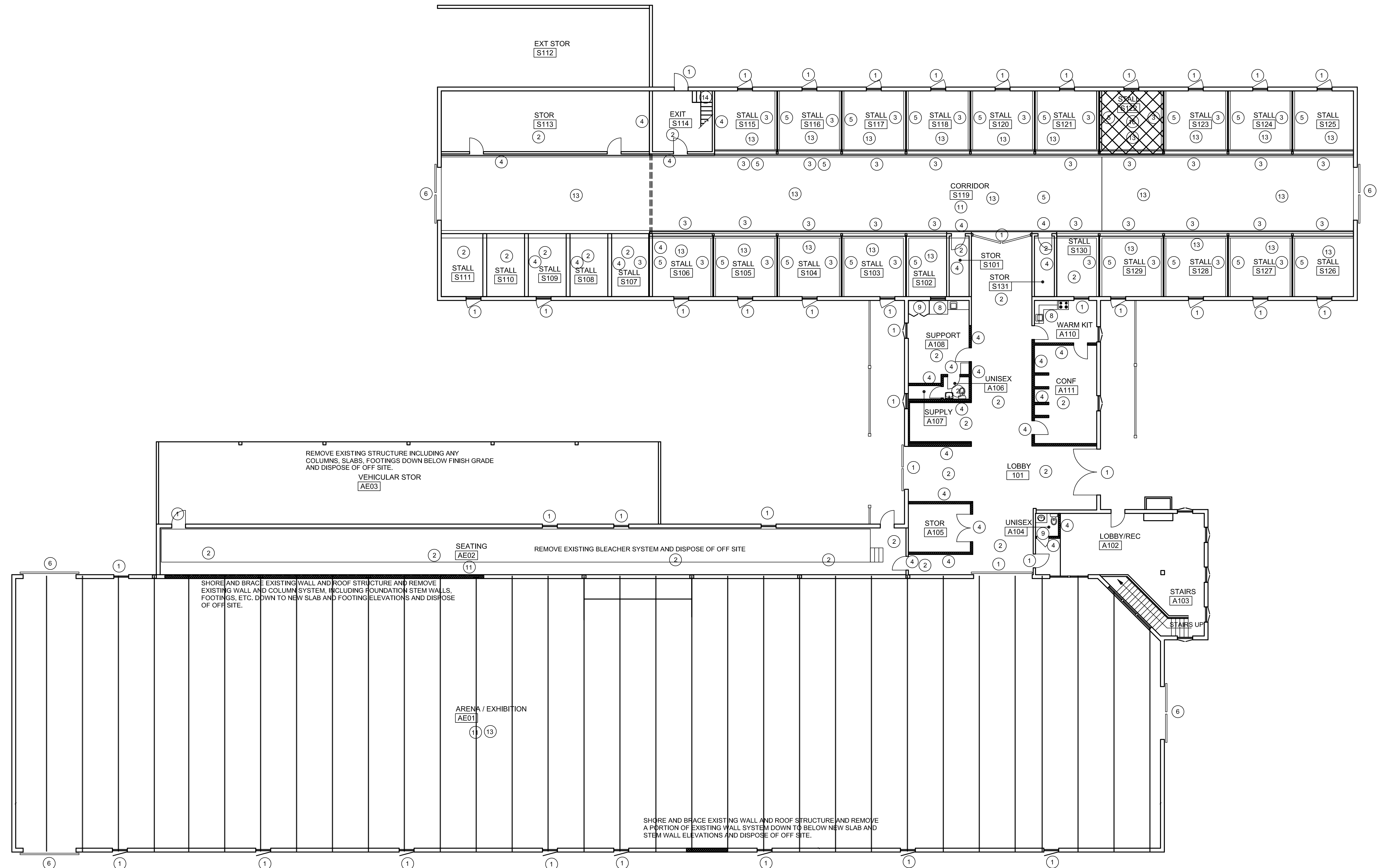


GENERAL DEMOLITION NOTES

- A. ALL DEMOLITION WORK SHALL BE DONE IN ACCORDANCE WITH THE CURRENT EDITIONS OF THE CODES LISTED ON SHEET ALS.1 AND CURRENT EDITIONS OF ALL OTHER APPLICABLE LOCAL CODES, ORDINANCES, SUBDIVISION REGULATIONS, AND COVENANTS AND REQUIREMENTS.
- B. REMOVE OF DEMOLITION ITEMS MEANS DEMOLITION, REMOVAL AND LEGALLY TRANSPORTING AND DISPOSING OFF-SITE ALL DEBRIS, RUBBISH AND OTHER MATERIALS RESULTING FROM DEMOLITION OPERATIONS.
- C. IF HAZARDOUS MATERIALS ARE ENCOUNTERED DURING DEMOLITION OPERATIONS, NOTIFY OWNER AND/OR ARCHITECT IMMEDIATELY.
- D. PROVIDE, ERECT AND MAINTAIN EFFECTIVE BARRICADES, DANGER SIGNALS AND SIGNS IN LOCATIONS WHERE REQUIRED FOR THE PROTECTION OF THE WORK AND THE SAFETY OF THE WORKERS AND THE PUBLIC.
- E. MAINTAIN EXISTING UTILITIES, INDICATED TO REMAIN, KEEP IN SERVICE AND PROTECT AGAINST DAMAGE DURING DEMOLITION OPERATIONS.
- F. PROVIDE MATERIALS, LABOR, AND EQUIPMENT NOT SPECIFICALLY INDICATED BUT NECESSARY FOR DEMOLITION AND PROPER INSTALLATION OF NEW MATERIALS AND PROPER COMPLETION OF THIS CONTRACT.

PLAN DEMOLITION NOTES

- 1. REMOVE EXISTING WINDOW, LOUVER, STOREFRONT, DOOR ASSEMBLIES, AND ASSOCIATED HARDWARE, ETC. AND DISPOSE OF OFF SITE.
- 2. REMOVE EXISTING CONCRETE FLOOR SLAB INCLUDING BRICK, RUBBER TILE AND SUB-GRADE MATERIAL DOWN TO NEW SUB-GRADE ELEVATION AND DISPOSE OF OFF SITE.
- 3. REMOVE EXISTING CONCRETE STRIP WALL FOOTINGS INCLUDING SUB-GRADE MATERIAL DOWN TO NEW SUB-GRADE ELEVATION AND DISPOSE OF OFF SITE. FIXTURES, VENT PIPES, CONDUIT, ETC. AND DISPOSE OF OFF SITE.
- 4. SHORE AND BRACE EXISTING FLOOR AND OR ROOF STRUCTURE AND REMOVE EXISTING WALL ASSEMBLY, INCLUDING ASSOCIATED DOOR AND WINDOW ASSEMBLIES THEREIN, AND DISPOSE OF OFF SITE.
- 5. REMOVE EXISTING STALL WALL ASSEMBLY, INCLUDING ASSOCIATED DOOR AND WINDOW ASSEMBLIES THEREIN, AND DISPOSE OF OFF SITE.
- 6. REMOVE EXISTING BARN DOOR ASSEMBLY, INSPECT, REPLACE ANY DETERIORATED PORTIONS AND RE-USE (RE-INSTALL) AS SHOWN.
- 7. REMOVE EXISTING CABINETRY AND DISPOSE OF OFF SITE.
- 8. REMOVE EXISTING CABINETRY INCLUDING SINK AND ASSOCIATED SUPPLY AND WASTE PIPING AND DISPOSE OF OFF SITE. CAP ALL SUPPLY AND WASTE LINES.
- 9. REMOVE EXISTING PLUMBING FIXTURES AND ASSOCIATED SUPPLY AND WASTE LINES.
- 10. REMOVE EXISTING MECHANICAL EQUIPMENT AND ASSOCIATED DUCTWORK, PIPING, CONDUIT, ETC. AND DISPOSE OF OFF SITE.
- 11. REMOVE EXISTING ELECTRICAL EQUIPMENT AND LIGHT FIXTURES AND ASSOCIATED CONDUIT, PANELS, SWITCHES, OUTLETS, ETC. AND DISPOSE OF OFF SITE.
- 13. REMOVE EXISTING GRADE MATERIAL DOWN TO BELOW NEW SUB-GRADE ELEVATIONS AND DISPOSE OF OFF SITE.
- 14. REMOVE EXISTING WOOD STAIR SYSTEM AND DISPOSE OF OFF SITE.
- 15. REMOVE EXISTING ROOF DORMER, INCLUDING WINDOW UNIT, ETC., AND DISPOSE OF OFF SITE.
- 16. REMOVE A PORTION OF EXISTING CEILING/ FLOOR STRUCTURE TO ALLOW INSTALLATION OF NEW STAIR SYSTEM. DISPOSE OF OFF SITE.



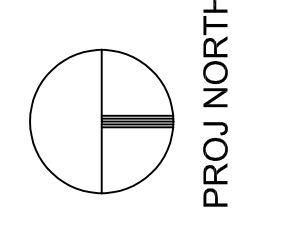
10641 HIGHWAY 36
COVINGTON, GA 30014
770.786.3031

**Retrofit & Renovations for
Madison Methodist Church**
Madison, Georgia 30650

DEMOLITION PLAN: FIRST FLOOR

| | | | |
|--------------|------------------|----|----------|
| JOB NO.: | 02405 | | |
| DRAWN BY: | GM | | |
| CHECKED BY: | GM | | |
| DESCRIPTION: | SCH-REVIEW-P1 | | |
| DATE: | 08.04.24 | | |
| DESCRIPTION: | DD-REVIEW | | |
| DATE: | 00.00.24 | | |
| DESCRIPTION: | CD-REVIEW | | |
| DATE: | 01.02.25 | | |
| DESCRIPTION: | BID-CONSTRUCTION | | |
| DATE: | 01.21.25 | | |
| REVISIONS: | | | |
| 1 | 03.24.25 | 8 | 02.09.26 |
| 2 | 04.21.25 | 9 | |
| 3 | 08.11.25 | 10 | |
| 4 | 08.20.25 | 11 | |
| 5 | 09.03.25 | 12 | |
| 6 | 12.18.25 | 13 | |
| 7 | 01.23.26 | 14 | |

THESE DRAWINGS ARE THE PROPERTY OF GMARCHITECT AND ARE NOT TO BE REPRODUCED OR HELD WITHOUT PERMISSION AND CREDIT.
COPYRIGHT: (C) 2026



OVERALL FIRST FLOOR PLAN: ARENA & STABLES

SCALE: 3/32" = 1'-0"

