

ARCHITECT

CONSULTANT



10641 HIGHWAY 36
COVINGTON, GA 30014
770.786.3031

FINISH FLOOR PLAN, NOTES, & FINISH SCHEDULES

**Retrofit & Renovations for
Madison Methodist Church**

1091 Confederate Highway
Madison, Georgia 30650

JOB NO.:	02405		
DRAWN BY:	GM		
CHECKED BY:	GM		
DATE:	08.04.24		
DESCRIPTION:	SCH-REVIEW-P1		
DATE:	08.04.24		
DESCRIPTION:	DD-REVIEW		
DATE:	00.00.24		
DESCRIPTION:	CD-REVIEW		
DATE:	01.02.25		
DESCRIPTION:	BID-CONSTRUCTION		
DATE:	01.21.25		
REVISIONS:			
1	03.24.25	8	02.09.26
2	04.21.25	9	
3	08.11.25	10	
4	08.20.25	11	
5	09.03.25	12	
6	12.19.25	13	
7	01.23.26	14	

THESE DRAWINGS ARE THE PROPERTY OF GM ARCHITECT AND ARE NOT TO BE REPRODUCED OR REUSED WITHOUT PERMISSION AND CREDIT.
COPYRIGHT: © 2026

SHEET

A9.1.1

OF

FINISH SCHEDULE

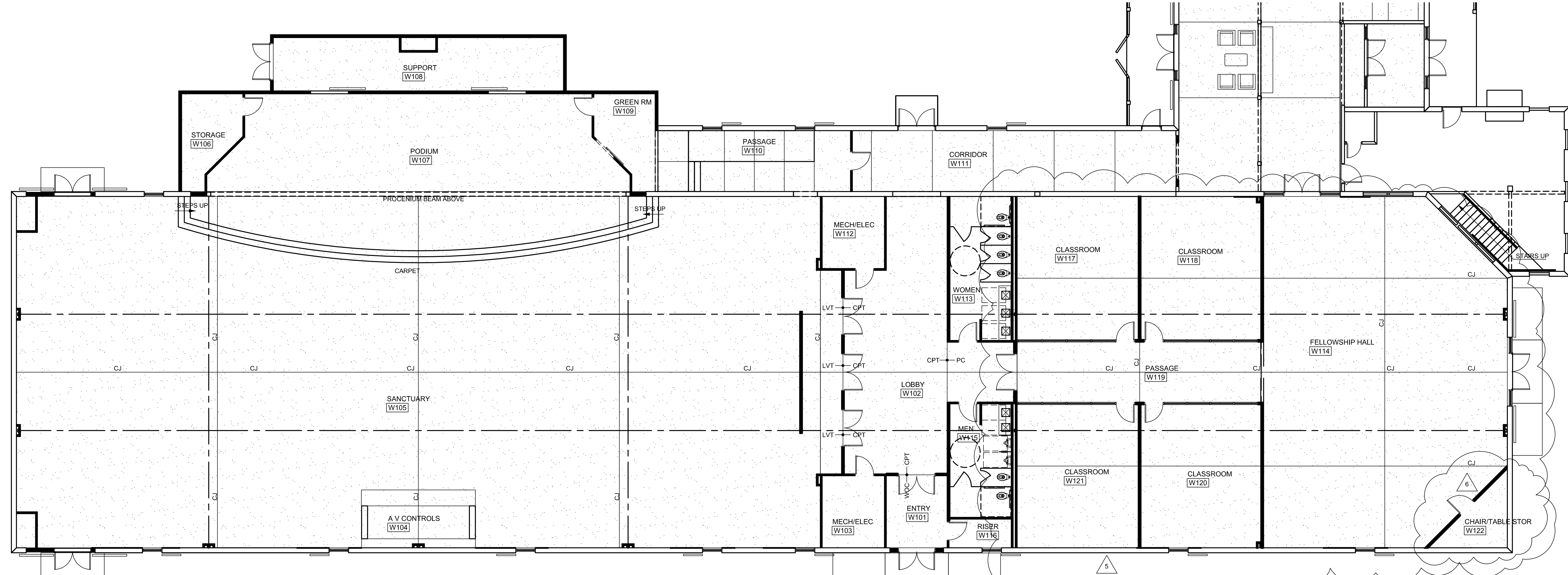
ABBREVIATIONS:	ACP BRK BRK-P CB CFT CWT CMU CPT CPT-T CS CONC.	ACOUSTICAL CEILING PANELS BRICK BRICK PAVERS CERAMIC BASE CERAMIC FLOOR TILE CERAMIC WALL TILE CONCRETE MASONRY UNIT GYPSUM BOARD CARPET CARPET TILE CONC. SEALER CONCRETE	EPT EHP EPT ES ENG FF GBB GYP GYP-X HPC HIP IPT ITP	ENAMEL PAINT EXTERIOR HIGH PERFORMANCE COATING EXTERIOR PAINT SYSTEM EXPOSED STRUCTURE EXISTING FACTORY FINISH GYPSUM BACKING BOARD GYPSUM BOARD GYPSUM BOARD, TYPE "X" HIGH PERFORMANCE COATING INTERIOR HIGH PERFORMANCE COATING INTERIOR PAINT SYSTEM INTUMESCENT PAINT SYSTEM	N/A PN. PLAS. PC PT PLYWD. QT RB RCP SHTG SLT S	NOT APPLICABLE(NONE) PINE PLASTER POLISHED CONCRETE PAINT PLYWOOD QUARRY TILE RUBBER BASE REFLECTED CEILING PLAN SHEATHING SLATE STAIN	SS STN TRZ TERRAZZO U UNFINISHED UND. UNDERLAYMENT BOARD VRN VARNISH VCT VINYL COMPOSITION TILE VST VINYL SHEET FLOORING WOC WALK-OFF-CARPET WC WALL COVERING WD. WOOD WP WOOD PANEL
----------------	---	---	---	---	--	---	---

NOTE: AN ABBREVIATION PRECEDED WITH AN "E" INDICATES AN EXISTING CONDITION, MATERIAL, FINISH, ETC. NOTE: AN ABBREVIATION PRECEDED WITH AN "R" INDICATES AN EXISTING MATERIAL REFINISHED AND REUSED.

RM. NO.	SPACE	FLOOR	BASE						WAINSCOT						WALLS						CEILING				REMARKS
			MATL	FIN	MATL	FIN	TYPE	C. R.	NORTH	EAST	SOUTH	WEST	D/W	MATL	FIN	HEIGHT	CORN	TYPE							
W101	ENTRY	CONC	FT-1	WD	PT	N/A	WD	PT	1	N/A	GYPX	PT	GYPX	PT	GYPX	PT	GYPX	PT	N/A	GYPXWD	WD	12'-0"	N/A	NOTE 5, 6, 11, 12, 13 & 16	
W102	LOBBY	CONC	LVT-1	WD	PT	N/A	WD	PT	1	N/A	GYPX	PT	GYPX	PT	GYPX	PT	GYPX	PT	N/A	GYPXWD	PT	12'-0"	N/A	NOTE 5, 6, 11, 12, 13 & 17	
W103	MECH/ELEC	CONC	CS-1	RB-3	FF	N/A	N/A	N/A	N/A	N/A	GYPX	PT	GYPX	PT	GYPX	PT	GYPX	PT	N/A	ES	ITP	VARIES	N/A	NOTE 7	
W104	AV CONTROLS	UND	CPT-1	WD	PT	N/A	N/A	N/A	N/A	N/A	-	-	SPL-01	FF	-	-	-	-	N/A	SPL-01	FF	13'-0"	N/A	NOTE 4, 5, 6, 7, 11 & 18	
W105	SANCTUARY	CONC	CPT-1	WD	PT	N/A	N/A	N/A	N/A	N/A	GYPX	PT	GYPX	PT	GYPX	PT	GYPX	PT	N/A	ES	ITP	VARIES	N/A	NOTE 5, 6, 7, 12, 18 & 19	
W106	STORAGE	CONC	CPT-3	RB-3	FF	N/A	N/A	N/A	N/A	N/A	GYPX	PT	GYPX	PT	GYPX	PT	GYPX	PT	N/A	ES	ITP	14'-0"	N/A	-	
W107	PODIUM	CONC	CPT-3	WD	PT	N/A	N/A	N/A	N/A	N/A	GYPX	PT	-	-	GYPX	PT	GYPX	PT	N/A	GYPX	PT	18'-0"	N/A	NOTE 9 & 20	
W108	SUPPORT	CONC	CPT-3	RB-3	FF	N/A	N/A	N/A	N/A	N/A	GYPX	PT	GYPX	PT	GYPX	PT	GYPX	PT	N/A	ES	ITP	18'-0"	N/A	NOTE 12	
W109	GREEN RM	CONC	CPT-3	RB-3	FF	N/A	N/A	N/A	N/A	N/A	GYPX	PT	GYPX	PT	GYPX	PT	GYPX	PT	N/A	ES	ITP	14'-0"	N/A	NOTE 12	
W110	PASSAGE	CONC	CS-1	RB-3	FF	N/A	N/A	N/A	N/A	N/A	GYPX	PT	GYPX	PT	GYPX	PT	GYPX	PT	N/A	ES	ITP	10'-0"	N/A	NOTE 7 & 12	
W111	CORRIDOR	CONC	LVT-1	WD	PT	N/A	N/A	N/A	N/A	N/A	GYPX	PT	GYPX	PT	GYPX	PT	GYPX	PT	N/A	WD	WD	VARIES	N/A	NOTE 7 & 13	
W112	MECH/ELEC	CONC	CS-1	RB-3	FF	N/A	N/A	N/A	N/A	N/A	GYPX	PT	GYPX	PT	GYPX	PT	GYPX	PT	N/A	ES	IPT	14'-0"	N/A	-	
W113	WOMEN	CONC	FT-1	FT-1 / FT-4	FF	N/A	N/A	N/A	N/A	N/A	GBB	FT-1/WT-3	GBB	WC-2	GBB	WC-2	GBB	WC-2	N/A	GYPX	PT	10'-0"	N/A	NOTE 14 & 21	
W114	FELLOWSHIP HALL	CONC	CS-1	WD	PT	N/A	N/A	N/A	N/A	N/A	GYPX	PT	GYPX	PT	GYPX	PT	GYPX	PT	N/A	GYPX	T-111	14'-0"	N/A	NOTE 5, 6, 7 & 22	
W115	MEN	CONC	FT-1	FT-1 / FT-4	FF	N/A	N/A	N/A	N/A	N/A	GBB	FT-1/WT-4	GBB	WC-3	GBB	WC-3	GBB	WC-3	N/A	GYPX	PT	10'-0"	N/A	NOTE 15 & 21	
W116	RISER RM	CONC	CS-1	RB-3	FF	N/A	N/A	N/A	N/A	N/A	GYPX	PT	GYPX	PT	GYPX	PT	GYPX	PT	N/A	ES	HR	13'-0"	N/A	NOTE 7 & 12	
W117	CLASSROOM	CONC	CPT-2	WD	PT	N/A	N/A	N/A	N/A	N/A	GYPX	PT	GYPX	PT	GYPX	PT	GYPX	PT	N/A	GYPX	PT	12'-0"	N/A	NOTE 10	
W118	CLASSROOM	CONC	CPT-2	WD	PT	N/A	N/A	N/A	N/A	N/A	GYPX	PT	GYPX	PT	GYPX	PT	GYPX	PT	N/A	GYPX	PT	12'-0"	N/A	NOTE 10	
W119	PASSAGE	CONC	CS-1	WD	PT	N/A	N/A	N/A	N/A	N/A	GYPX	PT	GYPX	PT	GYPX	PT	GYPX	PT	N/A	GYPX	PT	12'-0"	N/A	-	
W120	CLASSROOM	CONC	CPT-2	WD	PT	N/A	N/A	N/A	N/A	N/A	GYPX	PT	GYPX	PT	GYPX	PT	GYPX	PT	N/A	GYPX	PT	12'-0"	N/A	NOTE 10	
W121	CLASSROOM	CONC	CPT-2	WD	PT	N/A	N/A	N/A	N/A	N/A	GYPX	PT	GYPX	PT	GYPX	PT	GYPX	PT	N/A	GYPX	PT	12'-0"	N/A	-	
W122	TABLE/CHAIR STOR	CONC	CS-1	RB-3	FF	N/A	N/A	N/A	N/A	N/A	GYPX	PT	GYPX	PT	GYPX	PT	GYPX	PT	N/A	GYPX	PT	10'-0"	N/A	-	

FINISH NOTES:

- PROPER PREPARATION OF SURFACES AND ADEQUATE CLEANING FOR BONDING OF PAINT IS AN ABSOLUTE NECESSITY. START OF PAINTING INSTALLATION AND OPERATIONS INDICATES ACCEPTANCE OF SUBSTRATE SURFACE CONDITIONS AND FULL RESPONSIBILITY FOR COMPLETED WORK.
- WHERE EXISTING WALLS, FLOOR FINISHES, ETC. ARE SHOWN TO BE REMOVED, PROVIDE LEVEL SUBFLOOR SURFACE BY GRINDING DOWN THE EXISTING SLAB, PATCHING THE EXISTING SLAB, AND/OR INSTALLATION OF FLOOR LEVELING COMPOUND.
- WHERE DIFFERENT FLOOR FINISHES MEET, PROVIDE & INSTALL VINYL TRANSITION, UNLESS OTHERWISE NOTED.
- AV CONTROLS AREA WALLS TO BE CABINETRY FINISHES.
- SEE INTERIOR ELEVATIONS FOR WALL FINISHES OTHER THAN GYPSUM WALL BOARD.
- SEE REFLECTED CEILING PLANS FOR CEILINGS OTHER THAN EXPOSED STRUCTURE, GYPSUM BOARD, AND ACOUSTICAL CEILING PANELS.
- EXTERIOR WALL INTERIOR FINISH: WOOD SIDING THROUGHOUT WILL BE REMOVED. INSTALL NEW FINISHES AFTER INSTALLATION OF WALL INSULATION, ELECTRICAL, PLUMBING, ETC.
- SEE FLOOR PLAN FOR FLOOR FINISHES OTHER THAN EXPOSED CONCRETE.
- PODIUM TREADS AND RISERS TO BE WOOD RECLAIMED FROM EXISTING SIDING.
- INSTALL 5/8" GYPSUM BOARD TYPE "X" ON SUPPLEMENTAL 2X6 FRAMING AT 2'-0" O.C. AT EXISTING TRUSS BOTTOM CHORD.
- INSTALL 5/8" GYPSUM BOARD TYPE "X" ON SUPPLEMENTAL 2X6 FRAMING AT 2'-0" O.C. AT EXISTING TRUSS BOTTOM CHORD WHERE SCHEDULE INDICATES ACP, WOOD, OR A FINISH OTHER THAN GYPSUM BOARD.
- WHERE SHOWN TO PROVIDE INTUMESCENT PAINT ON EXISTING STRUCTURAL MEMBERS, PROVIDE FIRE RESISTANT INTUMESCENT PAINT.
- GYPSUM & WOOD CEILING: MATCH CONTROL SAMPLE.
- WT-3 BEHIND VANITY / FT-1 ON REMAINDER OF WET WALL.
- WT-4 BEHIND VANITY / FT-1 ON REMAINDER OF WET WALL.
- ENTRY MAT BY OWNER.
- 1/2" HEIGHT WOOD WALLS ALL WALLS.
- GYP CLOUDS @ 13'-0" / SLATS CLG @ 13'-0"
- STEEL COLUMNS & BEAMS WRAPPED IN WOOD OVER GYPX / FEATURE WALL: WC-1.
- SPL-01 ON 45 DEG WALLS / PROVIDE BLOCKING FOR REAR WALL DRAPERY.
- FLOOR TO CEILING WALL TILE INSTALLATION ON WET WALL.
- T-111 PANEL OVER GYPX ON BOTTOM CHORD OF TRUSSES.
- FLOOR TO CEILING WALL TILE INSTALLATION ON WET WALL.
- BASE: FT-2 CUT / FT-5.
- CEILING: WOOD CEILING 10'-0" / GYPSUM CEILING 9'-6".
- RUBBER TREADS & RISERS.
- INSTALL T & G WOOD CEILING OVER 5/8" GYPSUM TYPE X



FIRST FLOOR PLAN: WORSHIP-FELLOWSHIP HALL-PHASE I

SCALE: 1/8" = 1'-0"

