

**Retrofit & Renovations for
Madison Methodist Church**
Madison, Georgia 30650
1091 Confederate Highway

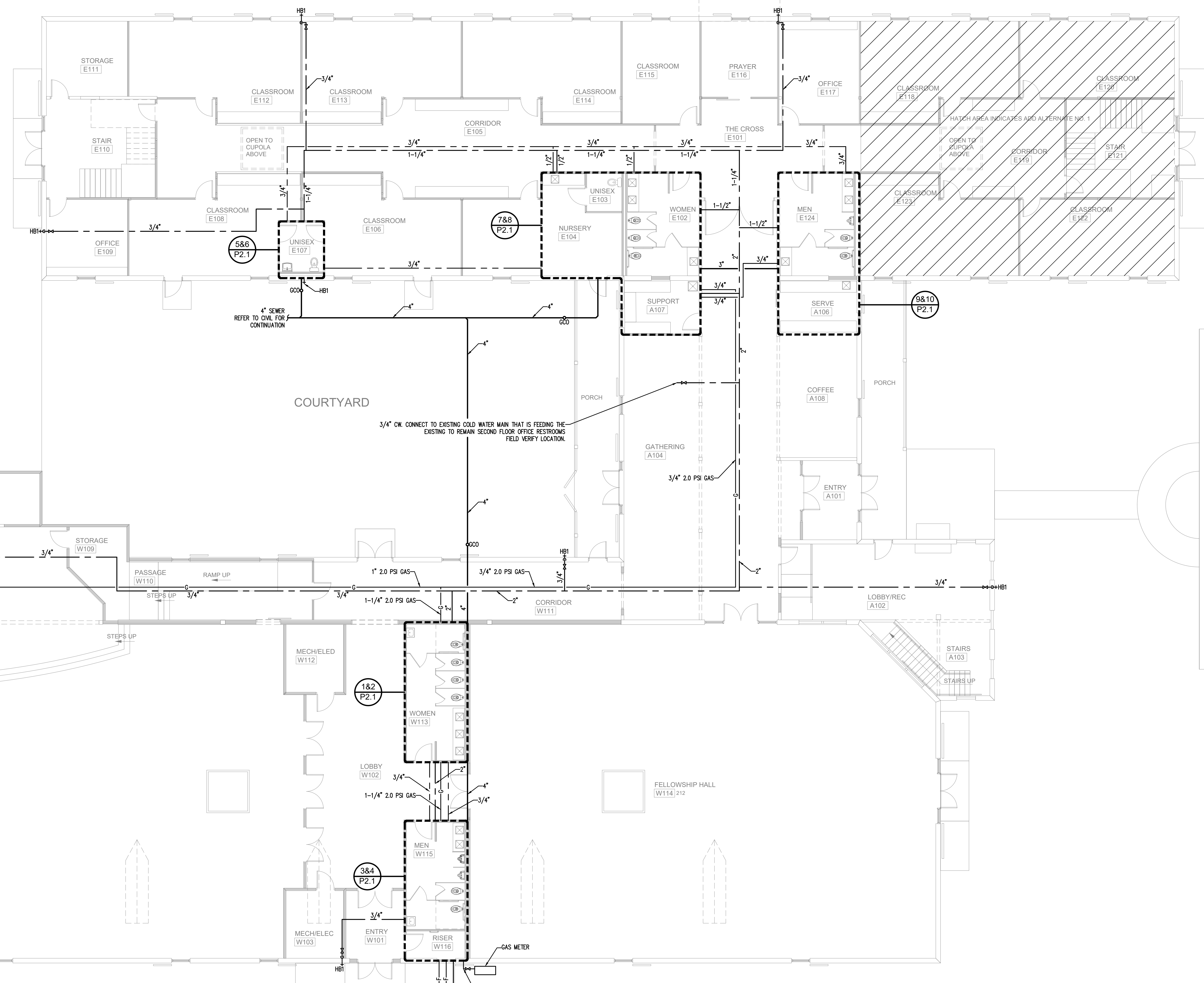
JOB NO.:	02405
DRAWN BY:	JWK/KMP
CHECKED BY:	KMP
DATE:	12.02.24
DESCRIPTION:	CD-REVIEW-DOCS
DATE:	00.00.24
DESCRIPTION:	DD-REVIEW
DATE:	00.00.24
DESCRIPTION:	CD-REVIEW
DATE:	12.02.24
DESCRIPTION:	BID-CONSTRUCTION
DATE:	00.00.24
REVISIONS:	
1	
2	
3	
4	
5	
6	
7	

THESE DRAWINGS ARE THE PROPERTY OF GMARCHITECT AND ARE NOT TO BE REPRODUCED OR HELD WITHOUT PERMISSION AND CREDIT.
COPYRIGHT © 2024

SHEET

P1.01

OF



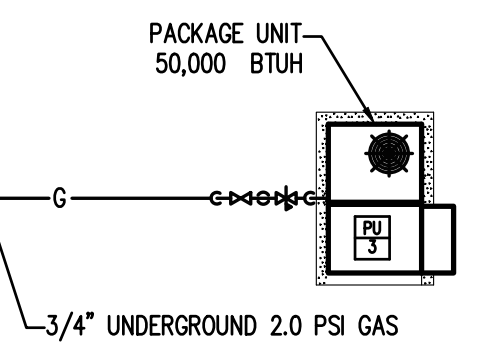
GAS NOTES:
NATURAL GAS SYSTEM PRESSURES WITHIN BUILDING: PRIMARY PRESSURE IS 2 PSIG, AND IS REDUCED TO SECONDARY PRESSURE OF 0.5 PSIG AT INDIVIDUAL POINTS OF USE.

GAS LOAD:
199,000 BTUH W#1 WATER HEATER
199,000 BTUH W#2 WATER HEATER
180,000 BTUH PU-1 PACKAGE UNIT
180,000 BTUH PU-2 PACKAGE UNIT
50,000 BTUH PU-3 PACKAGE UNIT

TOTAL BTUH: 808,000 BTUH

1 PLUMBING PLAN
SCALE: 1/8"=1'-0"

MATCHLINE



PROCEMIUM BEAM ABOVE

3/4" CW. CONNECT TO EXISTING COLD WATER MAIN THAT IS FEEDING THE EXISTING TO REMAIN SECOND FLOOR OFFICE RESTROOMS FIELD VERIFY LOCATION.

4" FIRE SPRINKLER FROM CITY/COUNTY SUPPLY
4" FIRE SPRINKLER TO REMOTE F.D.C.
2" WATER FROM CITY/COUNTY SUPPLY
REFER TO CIVIL FOR CONTINUATION