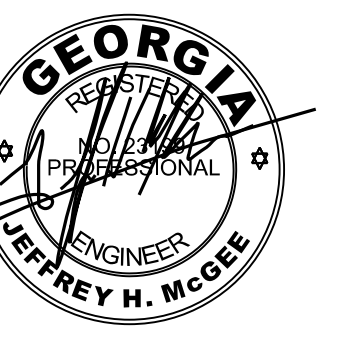


ARCHITECT

STAMP INVALID UNLESS SIGNED



CONSULTANT

STAMP INVALID UNLESS SIGNED



**EDC**  
ELECTRICAL DESIGN  
CONSULTANTS  
ELECTRICAL ENGINEERS  
MACON OFFICE - PROJECT #: M24085  
edc1973.com

10641 HIGHWAY 36  
COVINGTON, GA 30014  
770.786.3031

SECOND FLOOR PLAN - ELECTRICAL DEMOLITION

**Retrofit & Renovations for  
Madison Methodist Church**  
Madison, Georgia 30650  
1091 Confederate Highway

JOB NO.: 02405

DRAWN BY: TW

CHECKED BY: JM

DESCRIPTION: ISSUE

DATE: 07.24.2025

DESCRIPTION:

DATE:

DESCRIPTION:

DATE:

REVISIONS:

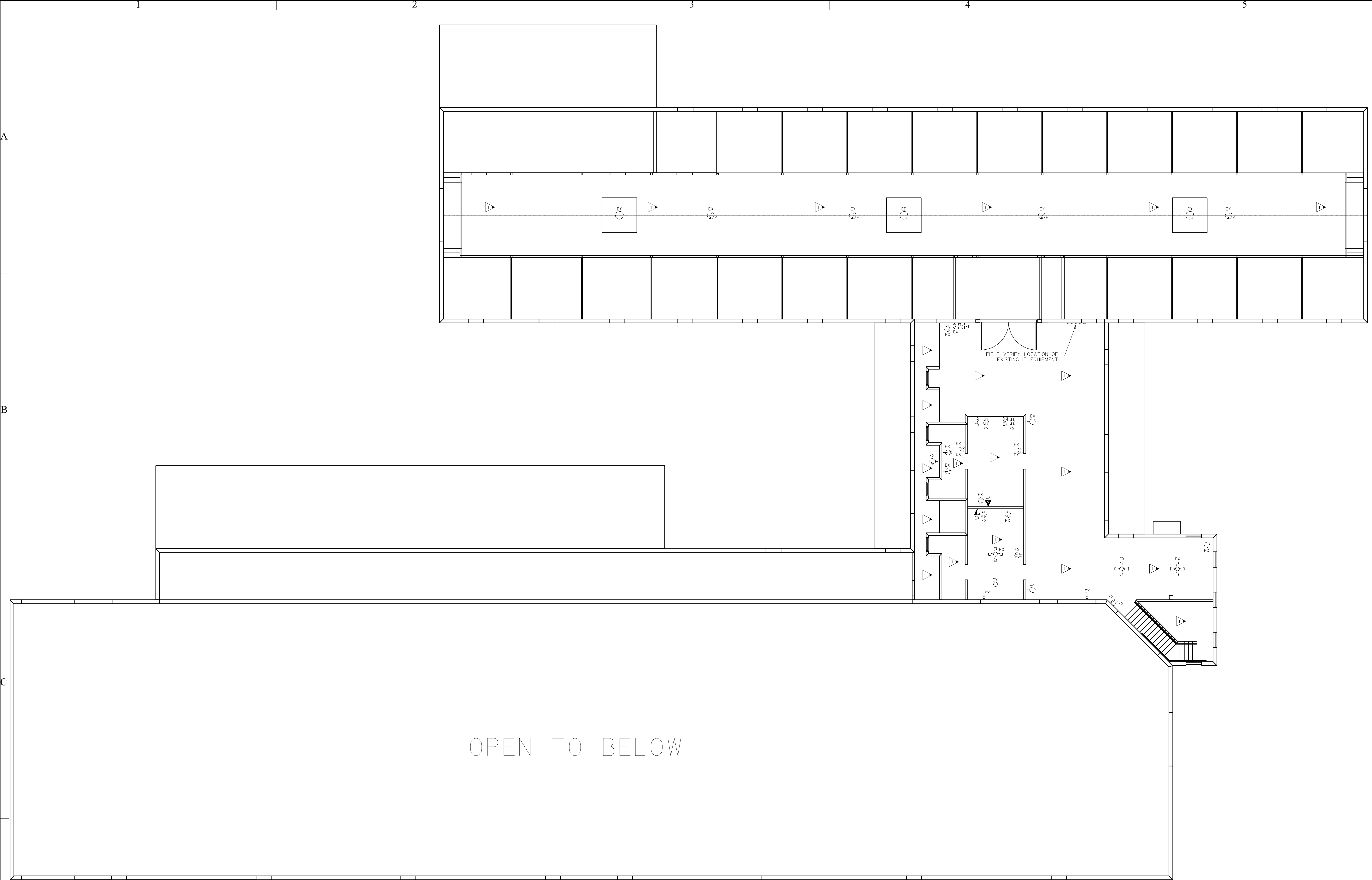
NO.	DESCRIPTION	DATE
1		8
2		9
3		10
4		11
5		12
6		13
7		14

THESE DRAWINGS ARE THE PROPERTY OF GMARCHITECT AND ARE NOT TO BE REPRODUCED OR HELD WITHOUT PERMISSION AND CREDIT.  
COPYRIGHT: (C) 2024

SHEET

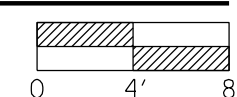
E1.2

OF



DEMOLITION LEGEND	
ED	EXISTING DEVICE TO BE DEMOLISHED, SEE DEMOLITION NOTES.
ER	EXISTING DEVICE TO BE RELOCATED, PROVIDE NEW DEVICE AND FACEPLATE, PROVIDE NEW BRANCH CIRCUIT BACK TO SERVING PANEL, BACKBOARD OR CABINET.
EX	EXISTING DEVICE TO REMAIN, PROVIDE NEW DEVICE AND FACEPLATE, PROVIDE NEW CABLING BACK TO SERVING CABINET ON LOW VOLTAGE DEVICES.

**1 SECOND FLOOR PLAN - ELECTRICAL DEMOLITION**  
SCALE: 1/8"=1'-0"



**KEYED NOTES:** (THIS SHEET ONLY)  
▷ NO DEMOLITION WORK IN AREA UNLESS NOTED OTHERWISE.

**GENERAL DEMOLITION NOTES:** (THIS SHEET ONLY)  
A. SEE SHEET E1.1 FOR GENERAL DEMOLITION NOTES.

**COORDINATION NOTE:**

CONTRACTOR SHALL CAREFULLY REVIEW HVAC AND ELECTRICAL DRAWINGS PRIOR TO BID. ALL HVAC EQUIPMENT TO REMAIN, EQUIPMENT BEING REPLACED, AND NEW EQUIPMENT SHALL BE PROVIDED POWER. ELECTRICAL DRAWINGS SHOW THE MEANS OF PROVIDING POWER. HOWEVER, ALL EQUIPMENT MUST BE POWERED WHETHER SHOWN OR NOT.

WHERE ELECTRICAL DRAWINGS SHOW PROVIDING BREAKERS IN EXISTING PANELS TO SERVE EQUIPMENT, CONTRACTOR SHALL VERIFY AVAILABLE SPACE, IF NOT AVAILABLE, CONTRACTOR SHALL PROVIDE BREAKER IN CLOSEST PANEL WITH AVAILABLE CAPACITY AND SPACE.

ALL EQUIPMENT MUST BE PROVIDED WITH A DISCONNECTING MEANS PER THE 2020 NEC (WHETHER OR NOT SHOWN ON ELECTRICAL DRAWINGS OR DIVISION 23)