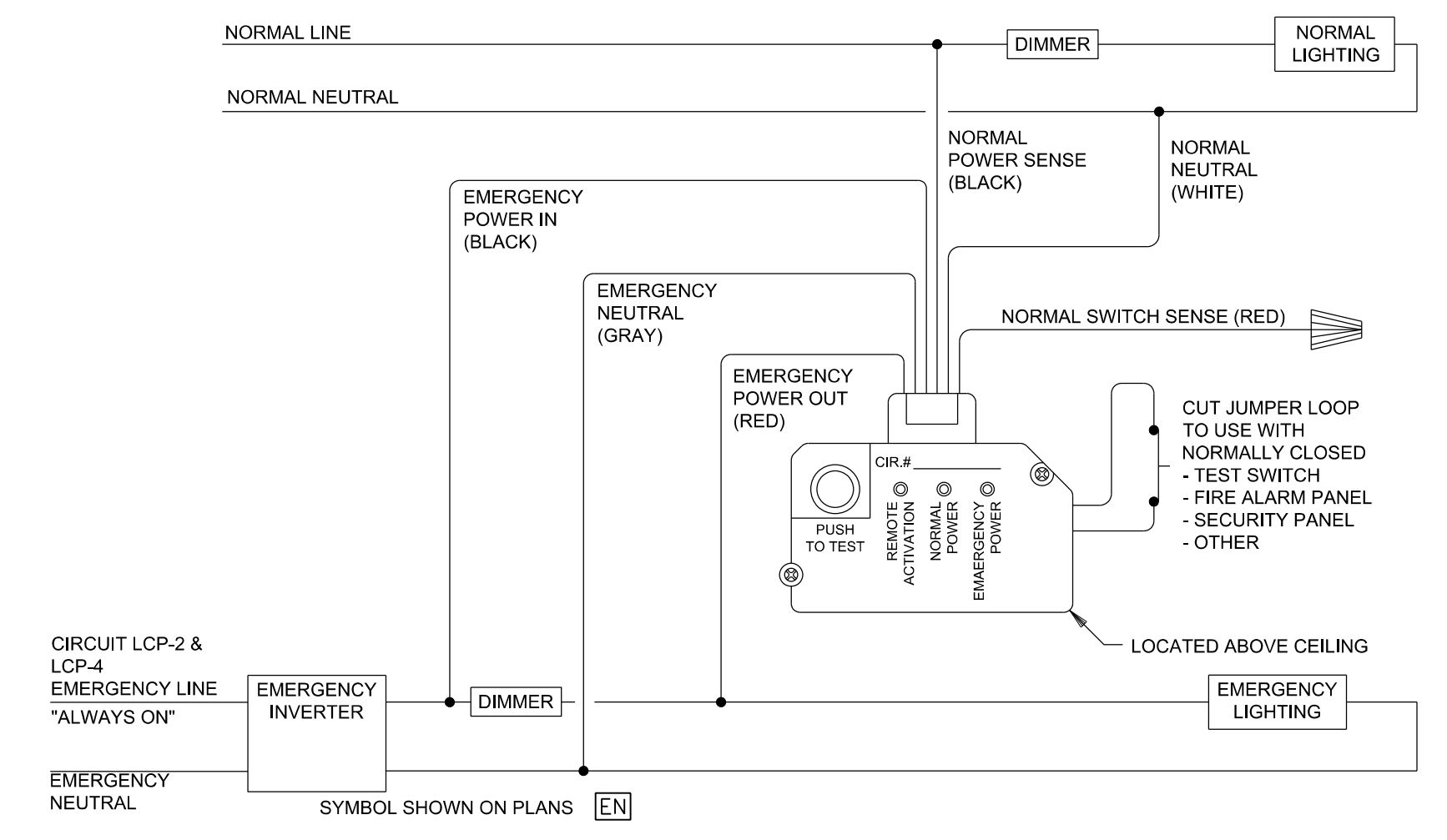


JOB NO.:	02405	
DRAWN BY:	TW	
CHECKED BY:	JM	
DESCRIPTION:	ISSUE	
DATE:	07.24.2025	
REVISIONS:		
1	8	02.09.26
2	9	
3	10	
4	11	
5	12	
6	13	
7	14	

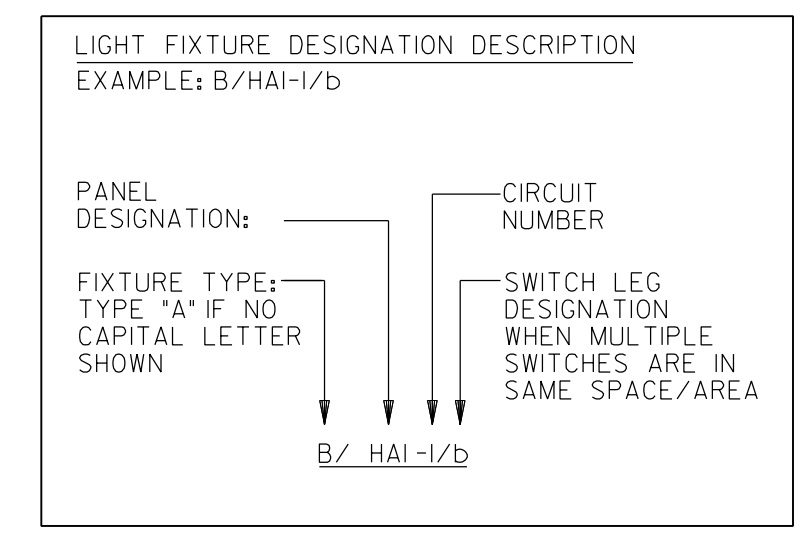
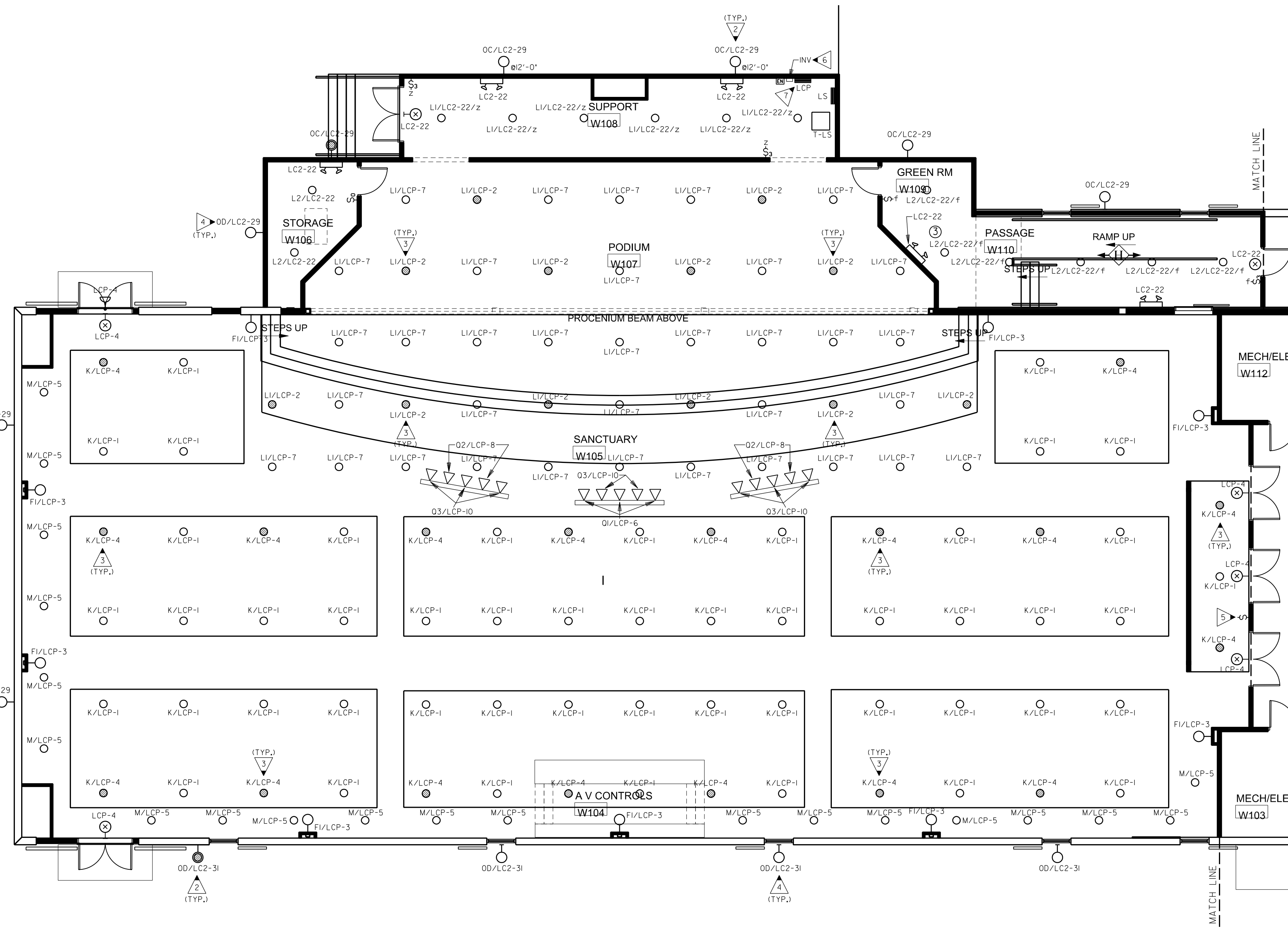
THESE DRAWINGS ARE THE PROPERTY OF GMARCHITECT AND ARE NOT TO BE REPRODUCED OR REUSED WITHOUT PERMISSION AND CREDIT.
COPYRIGHT (C) 2024



2
E2.1
**EMERGENCY LIGHTING CONTROL UNIT DETAIL -
(EMERGENCY LIGHTS SWITCHED W/NORMAL LIGHTS)**
NOTE: NORMAL POWER SENSING FEED IS NOT SHOWN ON THE DRAWINGS BUT SHALL BE PROVIDED FROM NEAREST NORMAL POWER CIRCUIT.
NOT TO SCALE

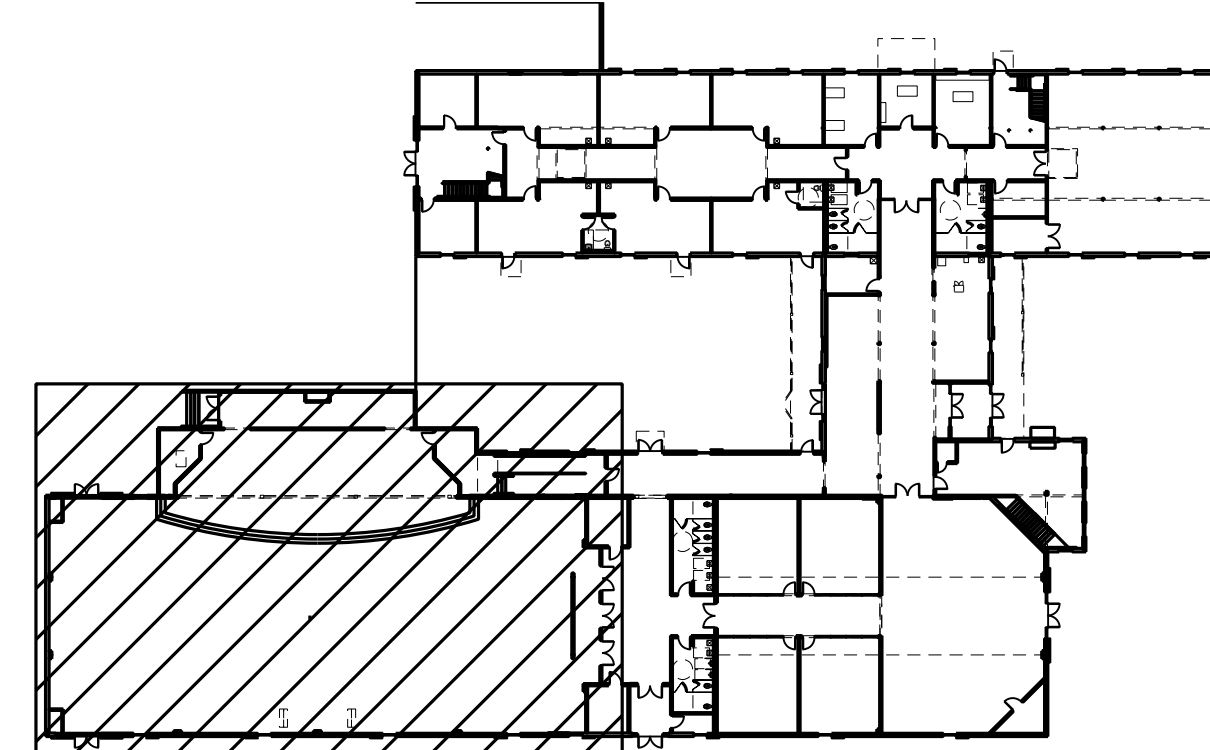
- KEYED NOTES:** (THIS SHEET ONLY)
- PROVIDE 365 DAY DIGITAL PROGRAMMABLE TYPE ELECTRONIC CONTROL TIMECLOCK WITH MINIMUM 10 CONTACTS AND MINIMUM 96 ON/OFF EVENTS PER WEEK. CONTACTS RATED FOR MINIMUM 30 AMP'S AND 208 VOLTS. PROVIDE WITH NEMA TYPE ENCLOSURE AND CAPACITOR BACKUP. PROVIDE WITH AUTO-ON-OFF FUNCTION. PROVIDE AUXILIARY INPUT FROM PHOTO CELL FOR OVERRIDE ON OR OFF CONTROL.
 - ROUTE VIA 10 POLE EXTERIOR LIGHTING CONTACTOR/TIMECLOCK LOCATED ADJACENT PANELS. PHOTO CELL SHALL CONTROL DUSK TILL DAWN OPERATION. TIMECLOCK SHALL INTERRUPT CIRCUIT DURING MIDNIGHT HOURS. SEE KEYED NOTE 1 USE PHOTO'S ENTIRE CIRCUIT IN 3/4 IN. C. UNLESS NOTED OTHERWISE. PROVIDE MANUAL OVERRIDE SWITCH, COORDINATE FINAL LOCATION WITH OWNER.
 - TYPICAL TYPES 'L1 & K' EMERGENCY LIGHTING FIXTURE CIRCUITS IN SANCTUARY ARE ROUTED THROUGH EMERGENCY SWITCHING RELAY FOR EMERGENCY LIGHTING.
 - COORDINATE EXACT MOUNTING HEIGHT WITH OWNER/ARCHITECT PRIOR TO ROUGH-IN.
 - COORDINATE FINAL LOCATION OF SWITCH STATION WITH OWNER/ARCHITECT, AND A/V CONSULTANT PRIOR TO ROUGH IN.
 - SEE DETAIL 2/E2.1 FOR WIRING REQUIREMENTS OF EMERGENCY LIGHTING AND CENTRAL BATTERY INVERTER.
 - PROVIDE 12 POLE LIGHTING CONTROL RELAY PANEL SYSTEM FOR SANCTUARY COMPLETE WITH BREAKERS AND SWITCHING RELAYS FOR EACH POLE. SYSTEM MUST BE PROVIDED COMPLETE WITH A LOW VOLTAGE WALL STATION, LOW VOLTAGE CONTROLS, AND SOFTWARE REQUIRED FOR SYSTEM FUNCTIONALITY. BASIS OF DESIGN IS THE WAVELINK WIRELESS SOURCE CONTROLLER. ACCEPTABLE MANUFACTURERS ARE COOPER LIGHTING / WAVELINK OR APPROVED EQUAL BY LITHONIA / NLIGHT, OR CURRENT / NX LIGHTING.

- GENERAL NOTES:** (SHEETS E2.1, E2.2, & E2.3)
- THIS PLAN INDICATES AREAS TO BE CONTROLLED BY MOTION SENSORS. SINCE COVERAGES AND DEVICES VARY BETWEEN MANUFACTURERS IT SHALL BE THE CONTRACTOR'S RESPONSIBILITY TO COORDINATE PROPER DEVICE LOCATION, ORIENTATION AND QUANTITIES WITH THE MANUFACTURER OF THE SYSTEM BEING INSTALLED TO MEET THE SPECIFIED CRITERIA.
 - ALL AREA'S OF THIS PLAN REQUIRE OCCUPANCY SENSOR COVERAGE EXCEPT FOR MECHANICAL ROOMS, ELECTRICAL ROOMS, SANCTUARY, AND FELLOWSHIP HALL. SEE LIGHTING SENSOR LEGEND EQU (TYPICAL).
 - THERE ARE NO SWITCHPACKS SHOWN ON THIS PLAN. PROVIDE SWITCHPACKS AS REQUIRED WITH SENSORS. SWITCHPACKS ARE TO BE RATED AT 20A. PROVIDE ONE SWITCHPACK PER 20A LIGHTING CIRCUIT OR PER INDIVIDUAL AREA BEING CONTROLLED.
 - CEILING SENSORS ARE TO BE MOUNTED AWAY FROM ANY STRONG AIRFLOW. COORDINATE LOCATION OF SENSOR WITH MECHANICAL AND LIGHTING PLANS.
 - ALL SENSORS SHALL BE CEILING MOUNTED EXCEPT WHERE CEILING HEIGHTS EXCEED 15 FT.-0 IN. PROVIDE SENSOR WITH ADAPTOR PLATE FOR JUNCTION BOX MOUNTING. JUNCTION BOX SHALL BE CONCEALED ABOVE ACCESSIBLE CEILING. JUNCTION BOX SHALL BE SUPPORTED FROM STRUCTURE UTILIZING A 7/8" THREADED ROD. WHERE CEILING HEIGHTS EXCEED 15 FT.-0 IN. WALL MOUNT SENSORS AT 12 FT.-0 IN.
 - PROVIDE UNSWITCHED HOT CONDUCTOR TO ALL EMERGENCY AND EXIT LIGHTS FOR NORMAL SWITCHED OPERATION OF FIXTURES WITH INTERNAL BATTERY BACKUP.



PROVIDE ALL BRANCH CIRCUIT CONDUIT/CONDUCTORS AS NECESSARY TO CONNECT ALL DEVICES SHOWN ON THE CIRCUIT. PROVIDE DEDICATED NEUTRALS FOR ALL CIRCUITS. (STRIPED NEUTRAL WITH PHASE COLOR STRIPING)

1
E2.1
PARTIAL FIRST FLOOR PLAN - LIGHTING
SCALE: 1/8"=1'-0"



KEY PLAN (N.T.S.)