

**Retrofit & Renovations for  
Madison Methodist Church**  
Madison, Georgia 30050  
1091 Confederate Highway

JOB NO.:	02405	
DRAWN BY:	TN	
CHECKED BY:	JM	
DESCRIPTION:	ISSUE	
DATE:	07.24.2025	
DESCRIPTION:		
DATE:		
DESCRIPTION:		
DATE:		
REVISIONS:		
1	8	02.09.26
2	9	
3	10	
4	11	
5	12	
6	13	
7	14	

THESE DRAWINGS ARE THE PROPERTY OF GMARCHITECT AND ARE NOT TO BE REPRODUCED OR HELD WITHOUT PERMISSION AND CREDIT.  
COPYRIGHT: (C) 2024

SHEET

E3.1

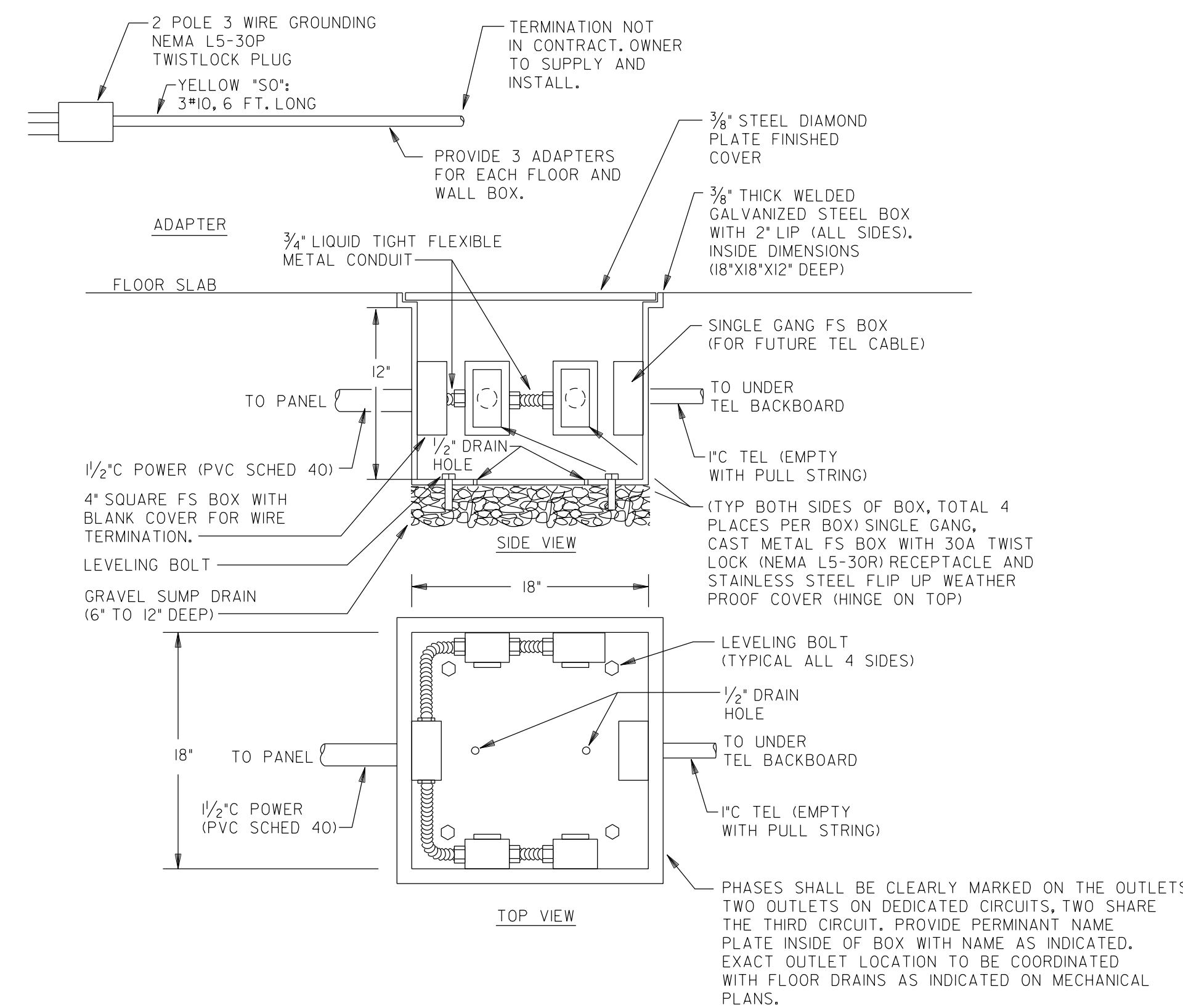
OF

**GENERAL NOTES:** (SHEETS E3, E3.2, E3.3, & E4)

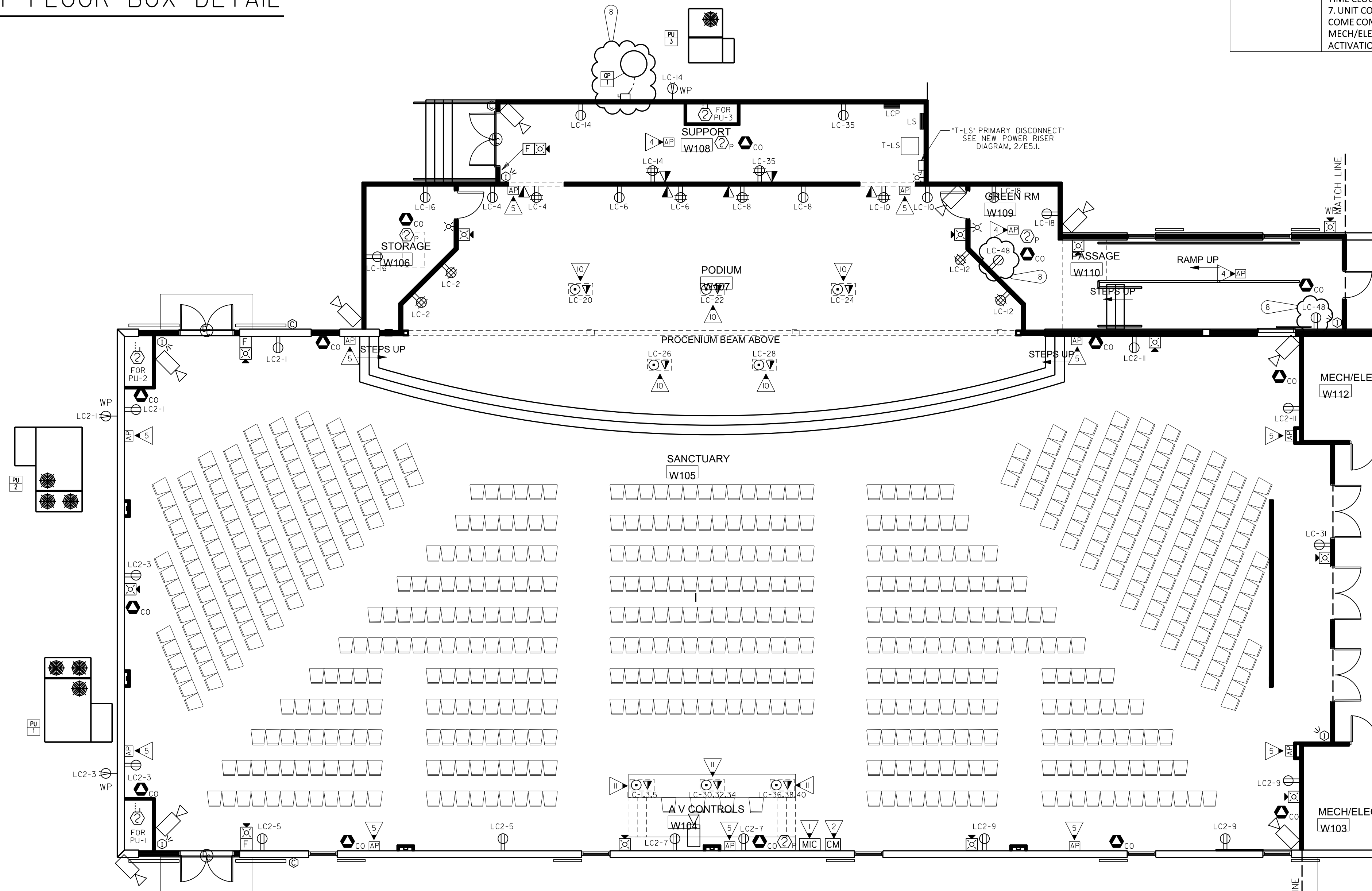
- COORDINATE EXACT LOCATIONS OF ALL MECHANICAL EQUIPMENT, PRIOR TO ELECTRICAL ROUGH-IN.
- ALL FLEXIBLE CONDUIT SHALL BE METALLIC WATERPROOF.
- COORDINATE FINAL RECEPTACLE AND VOICE/DATA OUTLET LOCATIONS WITH ARCHITECTURAL CASEWORK AND OWNER PRIOR TO ROUGH-IN, NO EXCEPTIONS.
- COORDINATE EXACT CONDUIT REQUIREMENTS FOR THERMOSTATS TO ALL AIR HANDLING UNITS, SEE MECHANICAL DRAWINGS FOR EXACT LOCATIONS, PROVIDE OUTLET BOXES AND CONDUIT TO ABOVE CEILINGS FOR ALL THERMOSTATS.
- FIRE SEAL ALL FIREWALL PENETRATIONS.
- REFER TO WIRE MANAGEMENT NOTES AND GENERAL NOTES (DATA CABLING) LOCATED ON SHEET E5.2.

UNIT NAME	VOLTAGE/ PHASE	CIRCUIT BREAKER	PANEL NAME/ CIRCUIT NUMBER	FEEDER	DISCONNECT SWITCH	NOTES
HP-1	208V/1PH	50A/2P	LD-1	3#6, #10G, 1 IN. C.	60A/2P/3R	1
HP-2	208V/1PH	50A/2P	LD-5	3#6, #10G, 1 IN. C.	60A/2P/3R	1
HP-3	208V/1PH	50A/2P	LD-9	3#6, #10G, 1 IN. C.	60A/2P/3R	1
HP-4	208V/1PH	50A/2P	LD-13	3#6, #10G, 1 IN. C.	60A/2P/3R	1
HP-5	208V/1PH	50A/2P	LD-17	3#6, #10G, 1 IN. C.	60A/2P/3R	1
HP-6	208V/1PH	50A/2P	LD-21	3#6, #10G, 1 IN. C.	60A/2P/3R	1
HP-7	208V/1PH	50A/2P	LD-25	3#6, #10G, 1 IN. C.	60A/2P/3R	1
HP-8	208V/1PH	60A/2P	LD-29	3#6, #8G, 1 IN. C.	60A/2P/3R	1
HP-9	208V/1PH	60A/2P	LD-33	3#6, #8G, 1 IN. C.	60A/2P/3R	1
HP-10	208V/1PH	60A/2P	LD-37	3#6, #8G, 1 IN. C.	60A/2P/3R	1
AH-1	208V/1PH	60A/2P	LD-21	3#6, #8G, 1 IN. C.	60A/2P	1,2
AH-2	208V/1PH	60A/2P	LD-25	3#6, #8G, 1 IN. C.	60A/2P	1,2
AH-3	208V/1PH	60A/2P	LD-29	3#6, #8G, 1 IN. C.	60A/2P	1,2
AH-4	208V/1PH	60A/2P	LD-33	3#6, #8G, 1 IN. C.	60A/2P	1,2
AH-5	208V/1PH	60A/2P	LD-37	3#6, #8G, 1 IN. C.	60A/2P	1,2
AH-6	208V/1PH	60A/2P	LD-41	3#6, #8G, 1 IN. C.	60A/2P	1,2
AH-7	208V/1PH	60A/2P	LD-45	3#6, #8G, 1 IN. C.	60A/2P	1,2
AH-8	208V/1PH	80A/2P	LD-34	3#4, #8G, 1 1/4 IN. C.	100A/2P	1,2
AH-9	208V/1PH	80A/2P	LD-38	3#4, #8G, 1 1/4 IN. C.	100A/2P	1,2
AH-10	208V/1PH	45A/2P	LD-42	3#6, #10G, 1 IN. C.	60A/2P	1,2
HPU/ACU-1	208V/1PH	25A/2P	LD-18	3#10, #10G, 3/4 IN. C.	30A/2P/3R	1,3
HPU/ACU-14	208V/1PH	25A/2P	LD-48	3#10, #10G, 3/4 IN. C.	30A/2P/3R	1,3
PU-1	208V/3PH	80A/3P	LD-2	4#4, #8G, 1 1/4 IN. C.	100A/3P/3R	1,7
PU-2	208V/3PH	80A/3P	LD-8	4#4, #8G, 1 1/4 IN. C.	100A/3P/3R	1,7
PU-3	208V/3PH	45A/3P	LD-14	4#8, #10G, 1 IN. C.	60A/3P/3R	1,7
EF-1	120V	20A/1P	LC-37	2#12, #12G, 1/2 IN. C.	MOTOR RATED SWITCH	1,5
EF-2	120V	20A/1P	LC-39	2#12, #12G, 1/2 IN. C.	MOTOR RATED SWITCH	1,5
EF-3	120V	20A/1P	LC-37	2#12, #12G, 1/2 IN. C.	MOTOR RATED SWITCH	1,6
EF-4	120V	20A/1P	LC-39	2#12, #12G, 1/2 IN. C.	MOTOR RATED SWITCH	1,6
EF-5	120V	CONNECT TO LIGHTS	CONNECT TO LIGHTS	2#12, #12G, 1/2 IN. C.	MOTOR RATED SWITCH	1,4
EF-6	120V	CONNECT TO LIGHTS	CONNECT TO LIGHTS	2#12, #12G, 1/2 IN. C.	MOTOR RATED SWITCH	1,4
EW-1	120V	20A/1P	LC-43	2#12, #12G, 3/4 IN. C.	MOTOR RATED SWITCH	1
WH-1	120V	20A/1P	LC-19	2#12, #12G, 1/2 IN. C.	MOTOR RATED SWITCH	
WH-2	120V	20A/1P	LC-27	2#12, #12G, 1/2 IN. C.	MOTOR RATED SWITCH	
RC-1	120V	20A/1P	LC-21	2#12, #12G, 1/2 IN. C.	MOTOR RATED SWITCH	
RC-2	120V	20A/2P	LC-29	2#12, #12G, 1/2 IN. C.	MOTOR RATED SWITCH	
GP-1	208V/3PH	30A/3P	LC-49	4#10, #10G, 3/4 IN. C.	30A/3P/3R	

- NOTES:
- SEE MECHANICAL FOR EXACT CONTROL REQUIREMENTS.
  - PROVIDE DUCT SMOKE DETECTOR IN SUPPLY AIR DUCT. UNIT SHALL COME COMPLETE WITH SAMPLING TUBE AND REMOTE TEST/RESET STATION LOCATED IN MECH/ELEC ROOM IN ACCESSIBLE LOCATION. DETECTOR SHALL SHUT DOWN UNIT UPON ACTIVATION. DETECTOR SHALL BE PROVIDED BY ELECTRICAL AND INSTALLED BY MECHANICAL.
  - INDOOR UNIT POWERED VIA OUTDOOR UNIT. PROVIDE 3/4 INCH CONDUIT FOR MANUFACTURER LINESSET.
  - INTERLOCK AND POWER FAN VIA LIGHTING CIRCUIT IN AREA SERVED. PROVIDE 10 MINUTE TIME DELAY RELAY. PROVIDE UNSWITCHED HOT WIRE TO FAN AND RELAY AT FAN.
  - FAN SHALL BE CONTROLLED BY A TIME CLOCK LOCATED IN W116 RISER ROOM. PROVIDE TIME CLOCK FOR FANS AND WIRE TIME CLOCK PER MANUFACTURERS INSTRUCTIONS.
  - FANS SHALL BE CONTROLLED BY A TIME CLOCK LOCATED IN A107 SUPPORT ROOM. PROVIDE TIME CLOCK FOR FANS AND WIRE TIME CLOCK PER MANUFACTURERS INSTRUCTIONS.
  - UNIT COMES WITH A MANUFACTURERS SUPPLY AIR DUCT SMOKE DETECTOR. UNIT SHALL COME COMPLETE WITH SAMPLING TUBE AND REMOTE TEST/RESET STATION LOCATED IN MECH/ELEC ROOM IN ACCESSIBLE LOCATION. DETECTOR SHALL SHUT DOWN UNIT UPON ACTIVATION.

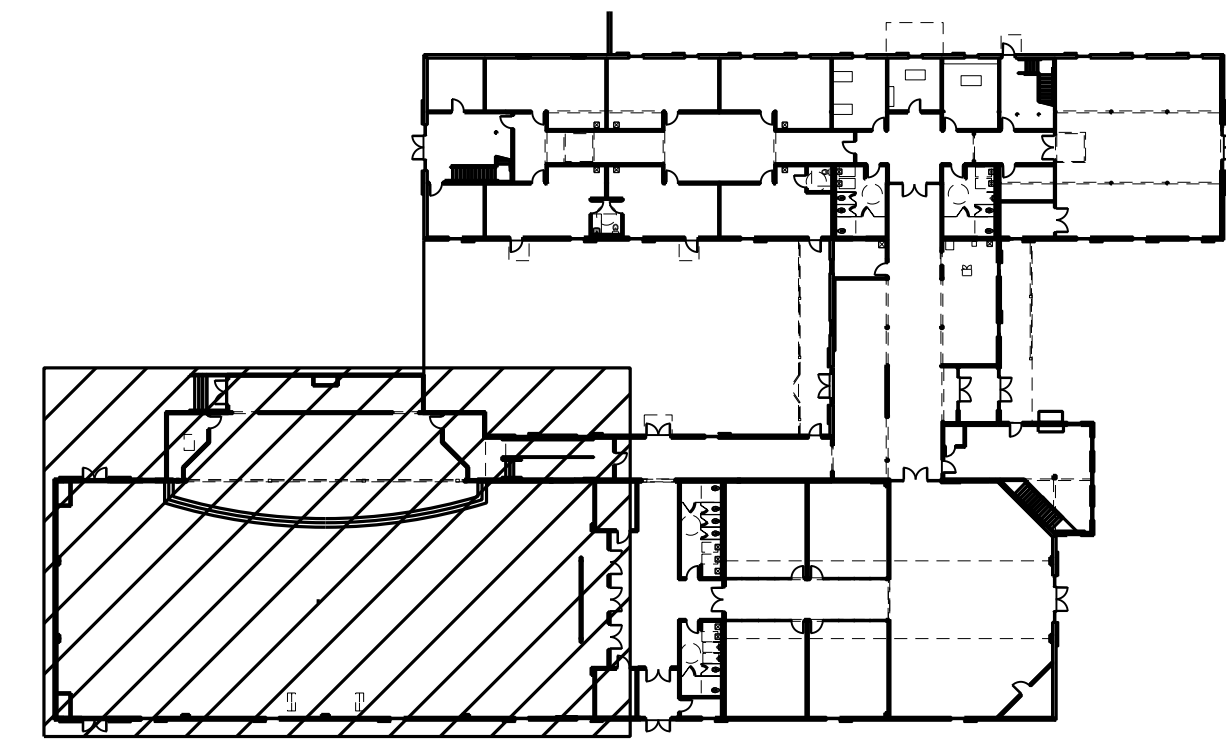


2 SANCTUARY FLOOR BOX DETAIL  
E3.1 NOT TO SCALE



1 PARTIAL FIRST FLOOR PLAN - POWER & SYSTEMS  
E3.1 SCALE: 1/8"=1'-0"

PROVIDE ALL BRANCH CIRCUIT CONDUIT/CONDUCTORS AS NECESSARY TO CONNECT ALL DEVICES SHOWN ON THE CIRCUIT. PROVIDE DEDICATED NEUTRALS FOR ALL CIRCUITS. (STRIPED NEUTRAL WITH PHASE COLOR STRIPING)



KEY PLAN (N.T.S.)