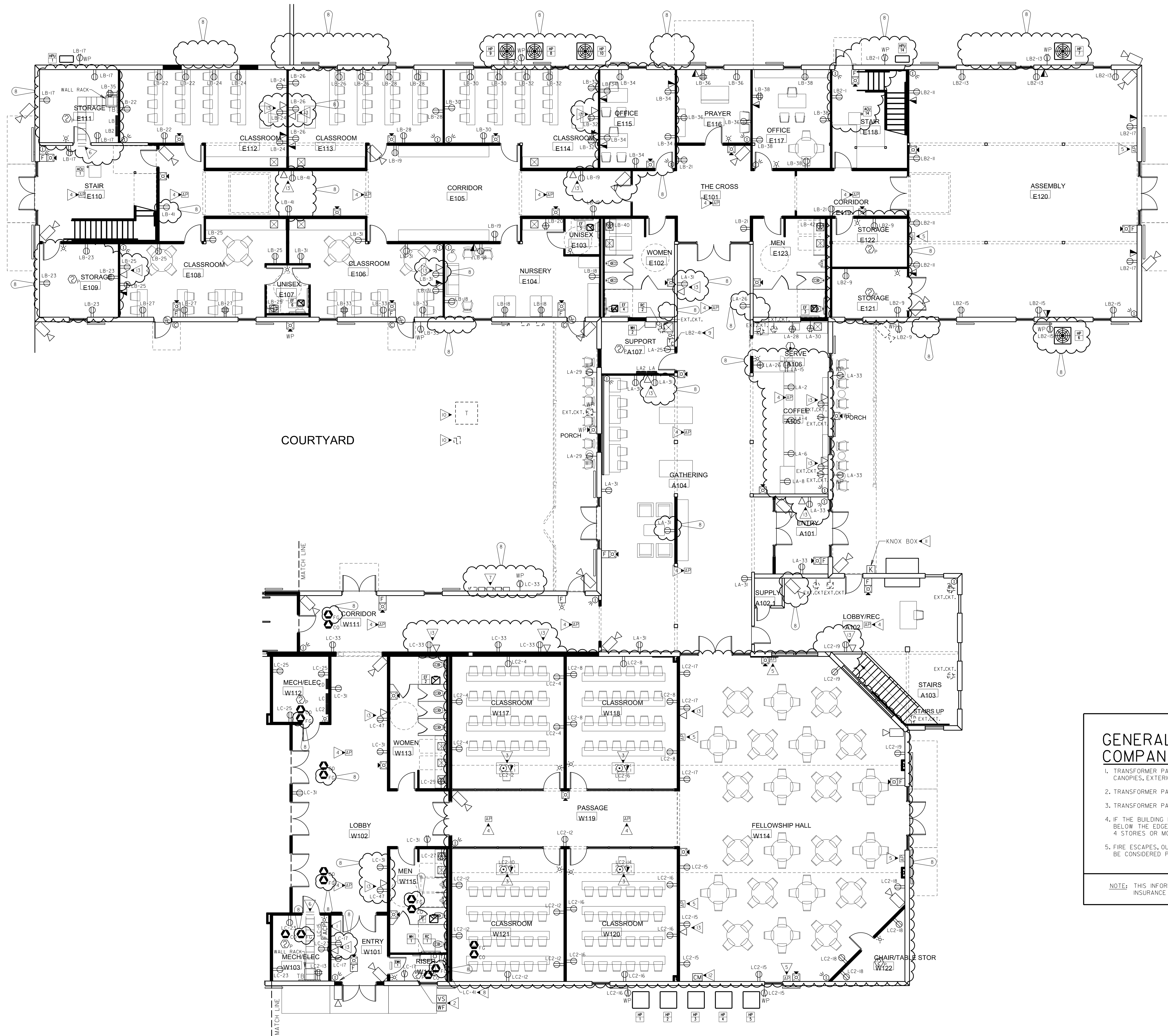


JOB NO.:	02405	
DRAWN BY:	TN	
CHECKED BY:	JM	
DESCRIPTION:	ISSUE	
DATE:	07.24.2025	
DESCRIPTION:		
DATE:		
DESCRIPTION:		
DATE:		
REVISIONS:		
1	8	02.09.26
2	9	
3	10	
4	11	
5	12	
6	13	
7	14	



KEYED NOTES: (THIS SHEET ONLY)

- 1 LABEL CIRCUIT BREAKER SERVING FIRE ALARM CONTROL PANEL WITH RED NAME PLATE "FIRE ALARM CIRCUIT". LABEL FIRE ALARM CONTROL PANEL WITH CIRCUIT NUMBER SERVING PANEL. PROVIDE HASP LOCK FOR CIRCUIT BREAKER.
- 2 PROVIDE FIRE ALARM SYSTEM MONITORING MODULES AT ALL FIRE SPRINKLER FLOW AND TAMPER SWITCHES AT FIRE RISER. COORDINATE EXACT LOCATIONS AND QUANTITIES WITH FIRE PROTECTION DRAWINGS.
- 3 COORDINATE EXACT LOCATION OF FLOOR BOX WITH OWNER/ARCHITECT PRIOR TO ROUGH-IN. PROVIDE 3/4 IN. C. FOR POWER AND 1/2 IN. C. FOR TELE/DATA FROM FLOOR BOX TO CLOSEST WALL.
- 4 PROVIDE BISCUIT DATA OUTLET FLUSH MOUNTED IN CEILING FOR WIRELESS ACCESS POINT. COORDINATE EXACT LOCATION WITH OWNER/ARCHITECT PRIOR TO ROUGH-IN.
- 5 PROVIDE BISCUIT DATA OUTLET FLUSH MOUNTED HIGH ON WALL FOR WIRELESS ACCESS POINT. COORDINATE EXACT LOCATION WITH OWNER/ARCHITECT PRIOR TO ROUGH-IN.
- 6 PROVIDE (3) 4 IN. CONDUIT SLEEVES THRU WALL. COORDINATE EXACT NUMBER OF CONDUIT SLEEVES REQUIRED WITH QUANTITY OF CABLES BEING INSTALLED.
- 7 SEE NEW POWER RISER DIAGRAM, I/E5.1.
- 8 TIMELOCK TO CONTROL EF-1 AND EF-2. SEE NOTE 5 ON THE MECHANICAL EQUIPMENT POWER SCHEDULE.
- 9 TIMELOCK TO CONTROL EF-3 AND EF-4. SEE NOTE 6 ON THE MECHANICAL EQUIPMENT POWER SCHEDULE.
- 10 NEW LOCATION OF RELOCATED TRANSFORMER AND METER. SEE GENERAL NOTES - LOCATION OF UTILITY COMPANY PAD MOUNTED TRANSFORMER.
- 11 KNOX REMOTE POWER BOX. COORDINATE FINAL LOCATION WITH OWNER, ARCHITECT, AND AHJ. COORDINATE MOUNTING WITH ARCHITECT.
- 12 PROVIDE FIRE ALARM CONTROL MODULE FOR SOUND SYSTEM OVERDRIE. COORDINATE WITH A/V CONSULTANT.
- 13 PROVIDE DUPLEX RECEPTACLE AND DATA OUTLET MOUNTED AT 72 IN. A.F.F. FOR TV. COORDINATE EXACT LOCATION OF TV WITH OWNER/ARCHITECT PRIOR TO ROUGH-IN.

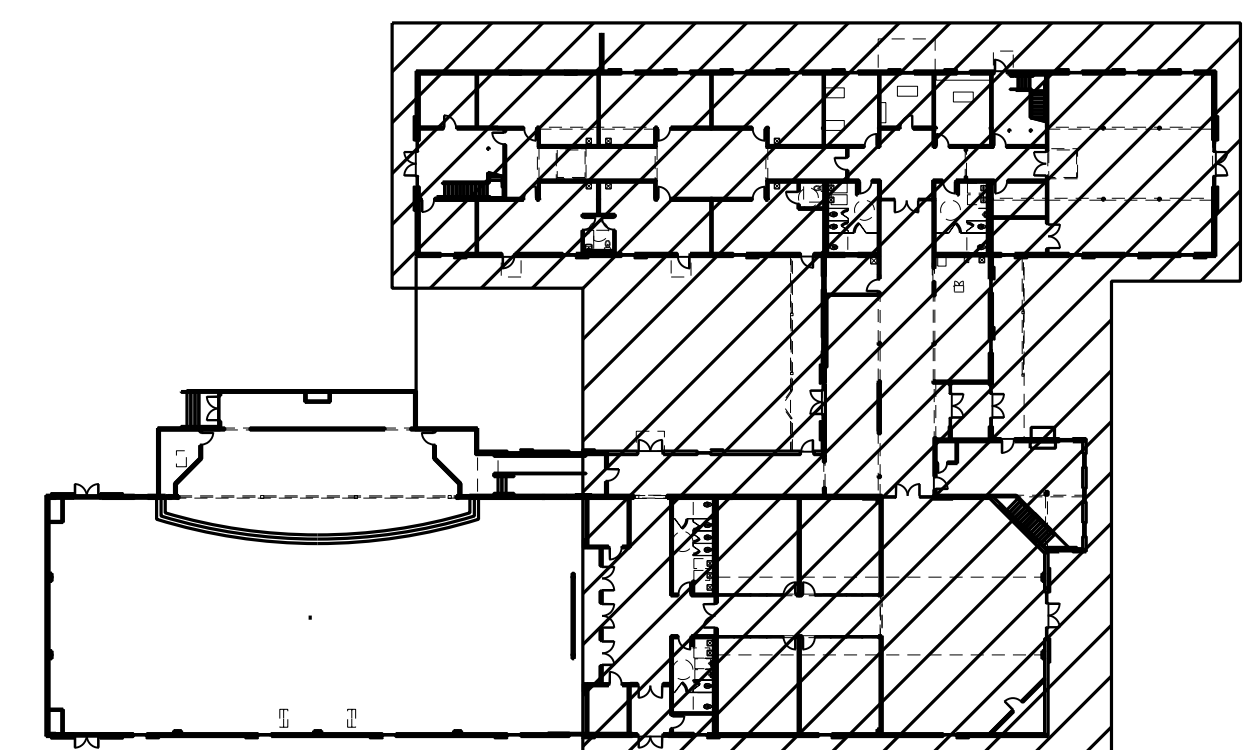
GENERAL NOTES: (THIS SHEET ONLY)

A. SEE SHEET E3.1 FOR GENERAL NOTES.

GENERAL NOTES - LOCATION OF UTILITY COMPANY PAD MOUNTED TRANSFORMER:

1. TRANSFORMER PAD LOCATIONS SHALL BE A MINIMUM OF 10 FT.-0 IN. FROM ANY BUILDING OVERHANGS, CANOPIES, EXTERIOR WALLS, BALCONY, EXTERIOR STAIRS AND OR WALKWAYS CONNECTED TO THE BUILDING.
2. TRANSFORMER PAD EDGE SHALL BE NO LESS THAN 14 FT.-0 IN. FROM ANY DOOR WAY.
3. TRANSFORMER PAD EDGE SHALL BE NO LESS THAN 10 FT.-0 IN. FROM ANY WINDOWS OR OTHER OPENINGS.
4. IF THE BUILDING HAS AN OVERHANG THE 10 FT.-0 IN. CLEARANCE SHALL BE MEASURED FROM A POINT BELOW THE EDGE OF THE OVERHANG ONLY IF THE BUILDING IS 3 STORIES OR LESS. IF THE BUILDING IS 4 STORIES OR MORE 10 FT.-0 IN. SHALL BE MEASURED FROM THE OUTSIDE BUILDING WALL.
5. FIRE ESCAPES, OUTSIDE STAIRS, AND COVERED WALKWAYS ATTACHED TO OR BETWEEN BUILDINGS, SHALL BE CONSIDERED PART OF THE BUILDING.

NOTE: THIS INFORMATION HAS BEEN OBTAINED FROM THE NFPA SECTION 450-27 AND THE OFFICE OF INSURANCE AND SAFETY FIRE COMMISSIONER CHAPTER 120-3-3.



KEY PLAN (N.T.S.)

PARTIAL FIRST FLOOR PLAN - POWER & SYSTEMS

E3.2 SCALE: 1/8"=1'-0"

PROVIDE ALL BRANCH CIRCUIT CONDUIT/CONDUCTORS AS NECESSARY TO CONNECT ALL DEVICES SHOWN ON THE CIRCUIT. PROVIDE DEDICATED NEUTRALS FOR ALL CIRCUITS. (STRIPED NEUTRAL WITH PHASE COLOR STRIPING)