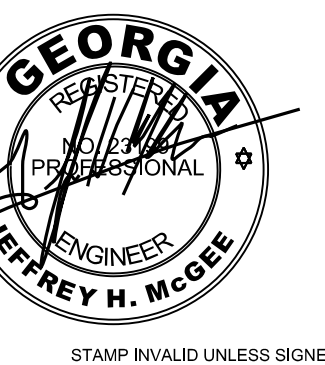


ARCHITECT

STAMP INVALID UNLESS SIGNED

CONSULTANT



STAMP INVALID UNLESS SIGNED

EDC

ELECTRICAL DESIGN
CONSULTANTS
ELECTRICAL ENGINEERS
MACON OFFICE - PROJECT #: M24085
edc1973.com

10641 HIGHWAY 36
COVINGTON, GA 30014
770.786.3031

SECOND FLOOR PLAN - POWER & SYSTEMS

**Retrofit & Renovations for
Madison Methodist Church**
Madison, Georgia 30650
1091 Confederate Highway

JOB NO.: 02405

DRAWN BY: TW

CHECKED BY: JM

DESCRIPTION: ISSUE

DATE: 07.24.2025

DESCRIPTION:

DATE:

DESCRIPTION:

DATE:

REVISIONS:

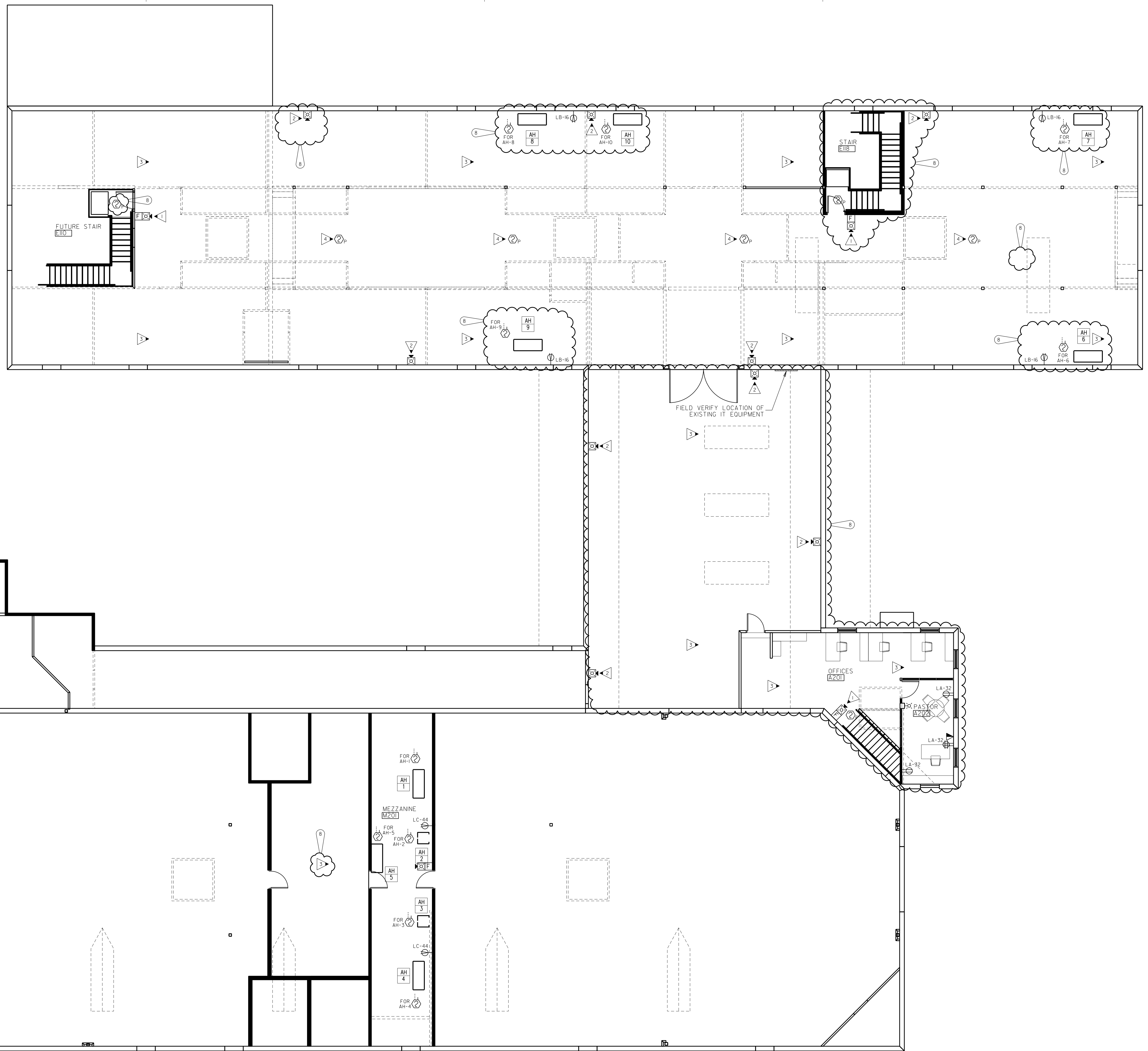
NO.	DESCRIPTION	DATE
1		02.09.26
2		
3		
4		
5		
6		
7		

THESE DRAWINGS ARE THE PROPERTY OF GM ARCHITECT AND ARE NOT TO BE REPRODUCED OR HEILTED WITHOUT PERMISSION AND CREDIT.
COPYRIGHT: (C) 2024

SHEET

E3.3

OF



GENERAL NOTES: (THIS SHEET ONLY)
A. SEE SHEET E3.1 FOR GENERAL NOTES.

KEYED NOTES: (THIS SHEET ONLY)

- ▷ PROVIDE NEW FIRE ALARM PULL STATION AND SPEAKER/STROBE AT STAIR LANDING.
- ▷ PROVIDE NEW FIRE ALARM SPEAKER STROBE.
- ▷ NO NEW WORK IN AREA DURING PHASE I UNLESS NOTED OTHERWISE.
- ▷ PROVIDE NEW FIRE ALARM SMOKE DETECTOR AT EXISTING SMOKE DETECTOR LOCATION. INTERLOCK DETECTORS WITH NEW FIRE ALARM SYSTEM.

PROVIDE ALL BRANCH CIRCUIT CONDUIT/CONDUCTORS AS NECESSARY TO CONNECT ALL DEVICES SHOWN ON THE CIRCUIT. PROVIDE DEDICATED NEUTRALS FOR ALL CIRCUITS. (STRIPED NEUTRAL WITH PHASE COLOR STRIPING)

SECOND FLOOR PLAN - POWER & SYSTEMS
E3.3 SCALE: 1/8"=1'-0"

