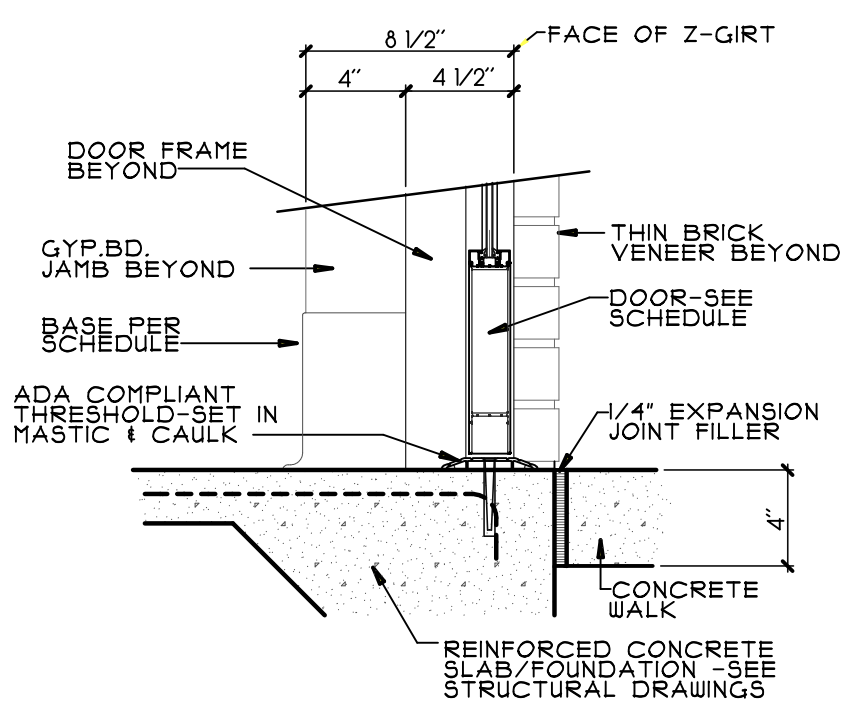


DRAWINGS AND SPECIFICATIONS ARE INSTRUMENTS OF SERVICE AND SHALL REMAIN THE PROPERTY OF THIS CORPORATION WHETHER THE PROJECT FOR WHICH THEY ARE MADE IS EXECUTED OR NOT. THEY ARE NOT TO BE USED ON OTHER PROJECTS OR EXTENSIONS OF THIS PROJECT EXCEPT BY AGREEMENT IN WRITING AND APPROPRIATE COMPENSATION TO THIS CORPORATION.

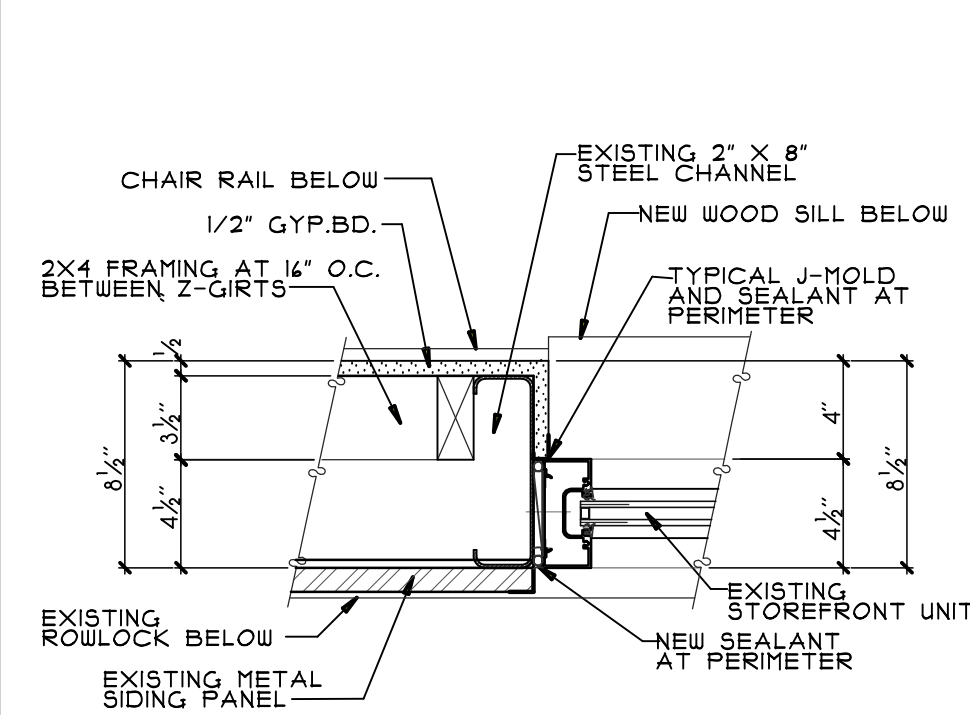
DOOR SCHEDULE

#	LOCATION	TYPE	SIZE	PAIR	SINGLE	GLASS	DETAILS			FIRE RATING	FUNCTION	REMARKS
							HEAD	JAMB	SILL			
1	ENTRY/WAITING	EXISTING	X	-	-	-	EXISTING	EXISTING	EXISTING	-	-	R4
2	WAITING/OUTDOOR DINING	G	55	X	G1	-	4/A8.0 SIM.	1/A8.0 SIM.	15/A8.0	-	O1	HI, H2, H12, T1
3	OUTDOOR DINING EXIT	J	55	X	-	-	4/A8.0 SIM.	12/A8.0 SIM.	15/A8.0 SIM.	-	O1	HI, H12
4	DRY STORAGE	B/F	55	X	-	-	2/A8.0 SIM.	3/A8.0 SIM.	-	-	F84	HI, H2, H1, T1
5	WALK-IN COOLER/FREEZER	-	-	X	-	-	-	-	-	-	-	FACTORY DOOR AND HARDWARE
6	KITCHEN EXIT	EXISTING	X	-	-	-	EXISTING	EXISTING	EXISTING	-	F82	HI, H2, T1, R4
7	DINING ROOM-B EXIT	B/F	55	X	-	-	4/A8.0 SIM.	1/A8.0 SIM.	15/A8.0 SIM.	-	O1	HI, H2, H12, T1
8	TOILET	A/E	55	X	-	-	2/A8.0	3/A8.0	-	-	F15	HI
9	TOILET	A/E	55	X	-	-	2/A8.0	3/A8.0	-	-	F15	HI
10	OFFICE	C/E	55	X	-	-	2/A8.0	3/A8.0	-	-	F82	-
11	MECHANICAL/SODA	A/E	55	X	-	-	2/A8.0	3/A8.0	-	-	F84	-
12	KITCHEN	D	58	X	G4	-	2/A8.0 SIM.	3/A8.0 SIM.	-	-	G4	DOUBLE ACTING WITH PUSH PLATE EACH SIDE
13	CORRIDOR/DINING-B	E	55	X	-	-	2/A8.0 SIM.	3/A8.0 SIM.	-	-	-	CASED OPENING, R5
14	KITCHEN/DRY STORAGE	E	55	X	-	-	2/A8.0 SIM.	3/A8.0 SIM.	-	-	-	CASED OPENING, R5
15	BAR/OUTDOOR DINING	H	58	X	G4	-	-	-	-	-	-	FACTORY FRAME AND HARDWARE
16	CORRIDOR/DINING-A	E	55	X	-	-	2/A8.0 SIM.	3/A8.0 SIM.	-	-	-	CASED OPENING, R5
17	PRIVATE TOILET	A/E	55	X	-	-	2/A8.0 SIM.	3/A8.0 SIM.	-	-	-	POCKET DOOR FRAME AND HARDWARE
18	DRY STORAGE	E	55	X	-	-	2/A8.0 SIM.	3/A8.0 SIM.	-	-	-	CASED OPENING, R5

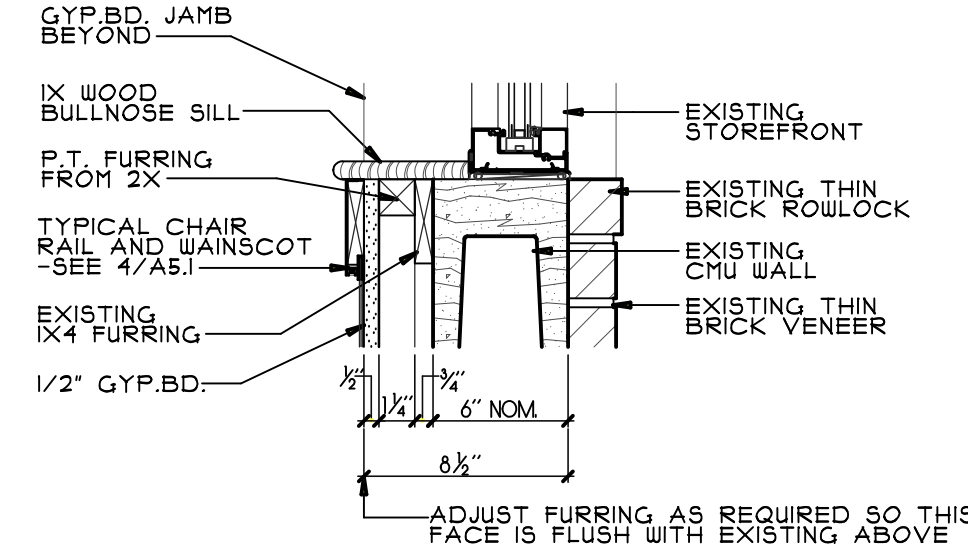
GENERAL NOTES:		HARDWARE		SIZE		FIRE RATING	
REFER TO DOOR CLEARANCE DTL. PRIOR TO INSTALLATION OF ANY DOOR FRAME. VERIFY ALL DIMENSIONS ON JOB SITE.		H1	CLOSER	S1	4'-0" X 7'-0" X 1 3/4"	FR1	20 MINUTE
DUE TO MULTIPLE USE, SOME OF THE DETAILS REFERRED TO ON THE DOOR SCHEDULE ARE REVERSED AND AS TURNED FROM THE DIRECTION SHOWN ON THE FLOOR PLAN. THE GENERAL INTENT OF DETAILS SHALL IN ALL CASES BE FOLLOWED AND THE ARCHITECT CONSULT SHOULD QUESTIONS ARISE.		H2	WEATHERSTRIPPING	S2	3'-10" X 7'-0" X 1 3/4"	FR2	45 MINUTE
CUT DOORS IN ALL CARPETED AREAS (UNLESS NOTED) 1/2" ABOVE TOP OF CARPET.		H3	CONCEALED VERTICAL ROD PANIC DEVICE (GRADE 1)	S3	3'-8" X 7'-0" X 1 3/4"	FR3	1 HOUR
CARD READER, IF PROVIDED, TO BE INTERCONNECTED TO FIRE ALARM.		H4	MAGNETIC HOLD OPEN DEVICE	S4	3'-6" X 7'-0" X 1 3/4"	FR4	1 1/2 HOUR
CONTRACTOR SHALL COORDINATE DOOR DIMENSIONS WITH WALL TYPES.		H5	PUSH PLATE	S5	3'-0" X 7'-0" X 1 3/4"	FR5	3 HOUR
CARD READER SHALL BE PROVIDED TO BE INTERCONNECTED TO FIRE ALARM.		H6	PULL HANDLE	S6	2'-8" X 7'-0" X 1 3/4"	REMARKS	
		H7	WALLSTOP	S7	2'-6" X 7'-0" X 1 3/4"	R1	12x12 LOUVER CARD READER
		H8	FLOOR STOP	S8	PER DOOR TYPES	R2	CARD READER WITH ACCESS BUTTON
		H9	SMOKE GASKETS	G1	LOW E INSULATED TEMPERED	R3	CARD READER WITH ACCESS BUTTON
		H10	FLUSH BOLTS-T&B INSIDE	G2	1/4" CLEAR TEMPERED	R4	REPLACE EXISTING HARDWARE
		H11	"T" ASTRICAL	G3	1/4" WIRE GLASS LABELED FOR FIRE PROTECTION	R5	FIELD VERIFY FRAME WIDTH
		H12	RIM PANIC DEVICE (GRADE 1)	G4	PER DOOR TYPE	R6	EXISTING HARDWARE- PROVIDE SIGN ADJACENT TO DOOR STATING THIS DOOR TO REMAIN UNLOCKED AT ALL TIMES WHEN BUILDING IS OCCUPIED.
		H13	DUST PROOF STRIKE				
		H14	FLOOR STOP W/ HOOK				
		H15	KICK PLATE				
		THRESHOLD					
		T1		ADA COMPLIANT METAL			



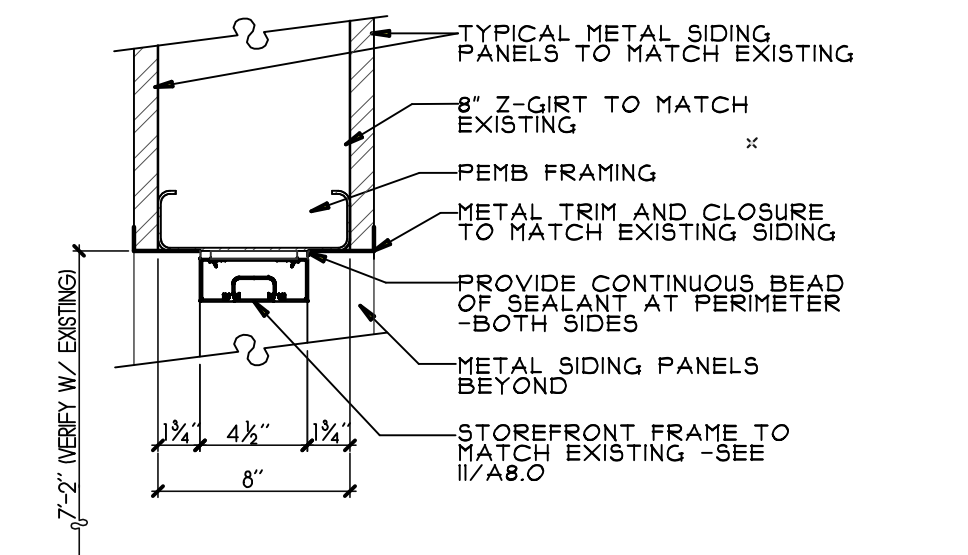
STOREFRONT SILL SCALE: 1 1/2" = 1'-0" 15



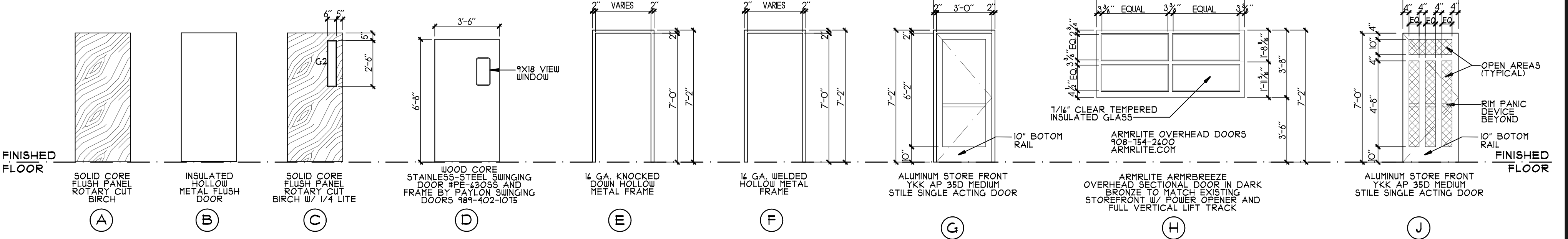
JAMB AT EXISTING SCALE: 1 1/2" = 1'-0" 14



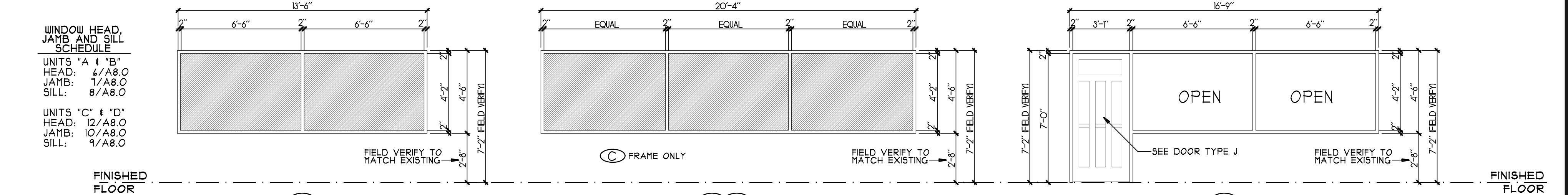
SILL AT EXISTING SCALE: 1 1/2" = 1'-0" 13



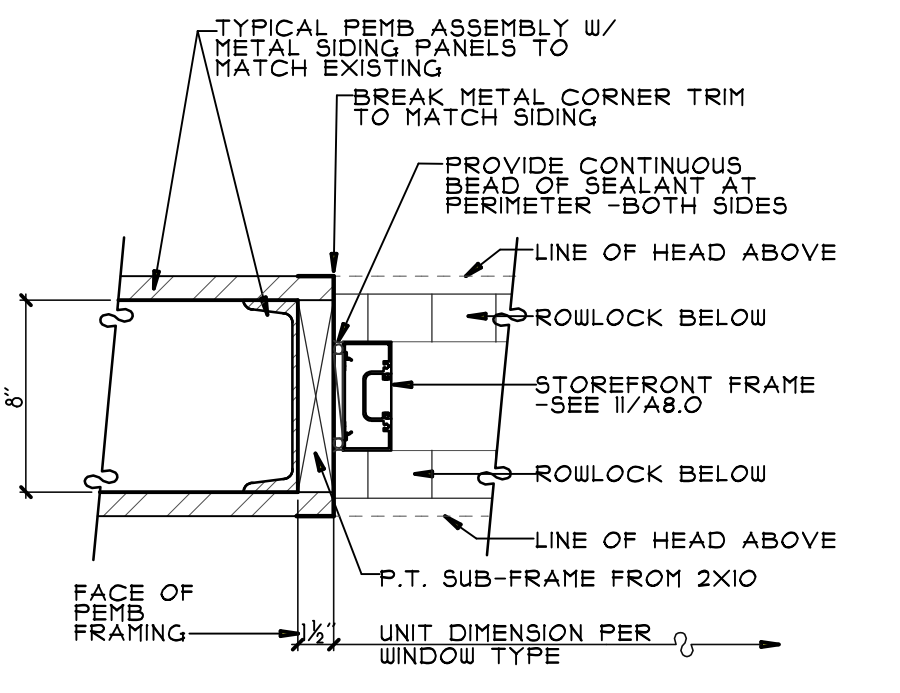
PATIO HEAD DETAIL SCALE: 1 1/2" = 1'-0" 12



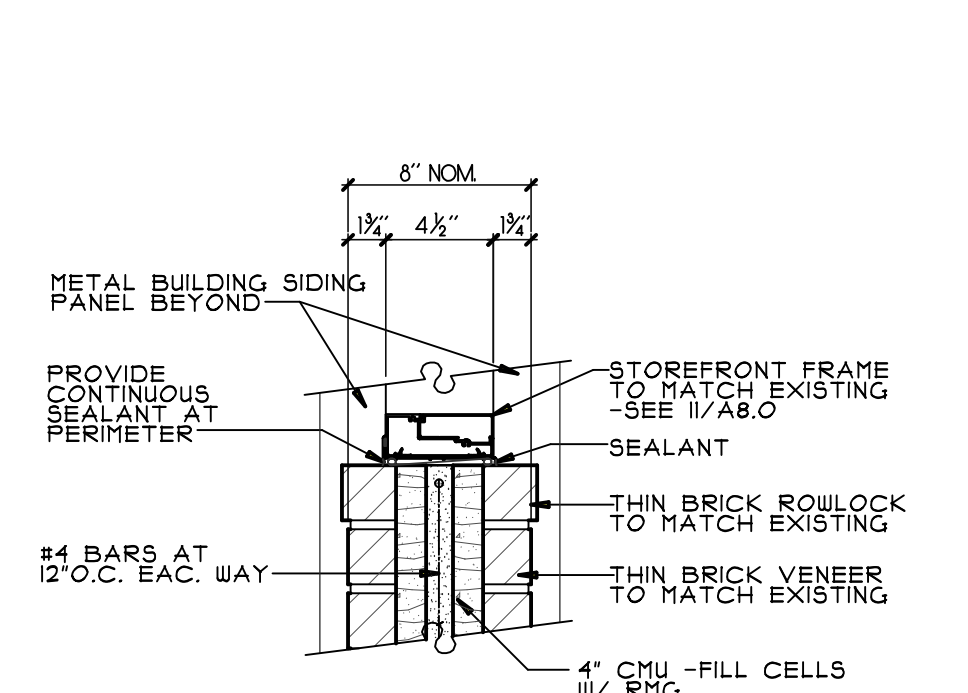
DOOR TYPES SCALE: 1/4" = 1'-0"



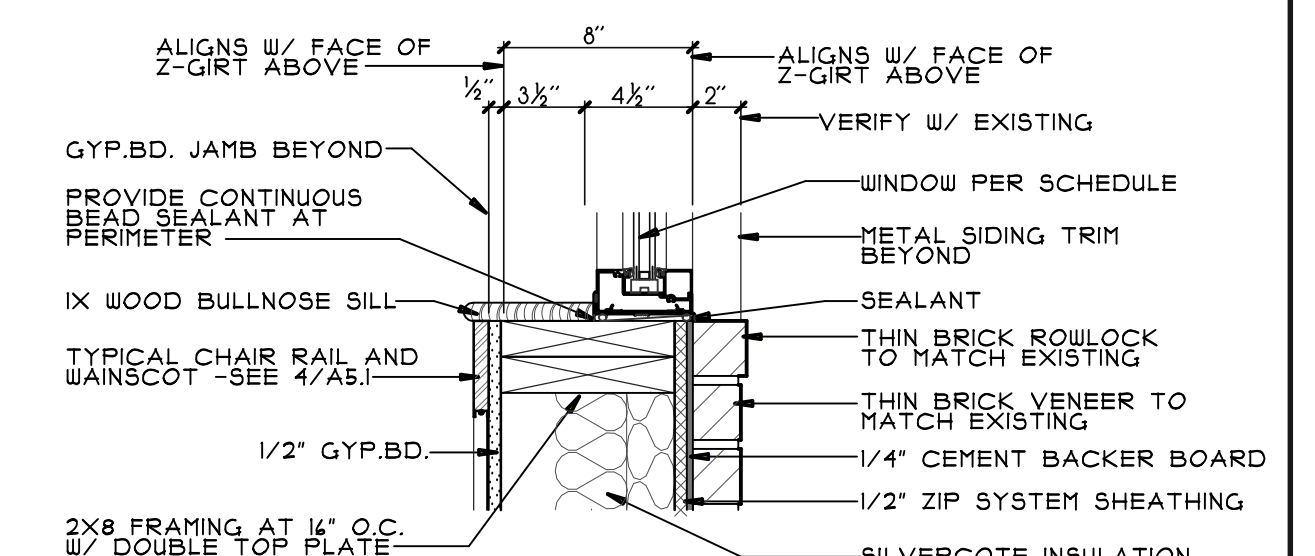
WINDOW TYPES SCALE: 1/4" = 1'-0" 11



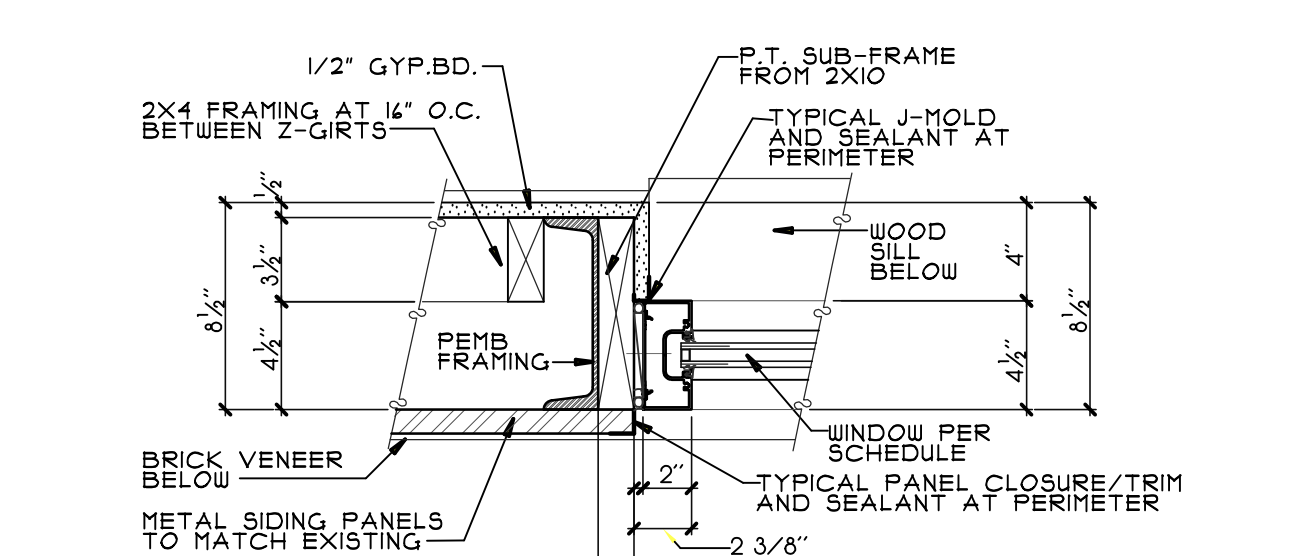
PATIO JAMB DETAIL SCALE: 1 1/2" = 1'-0" 10



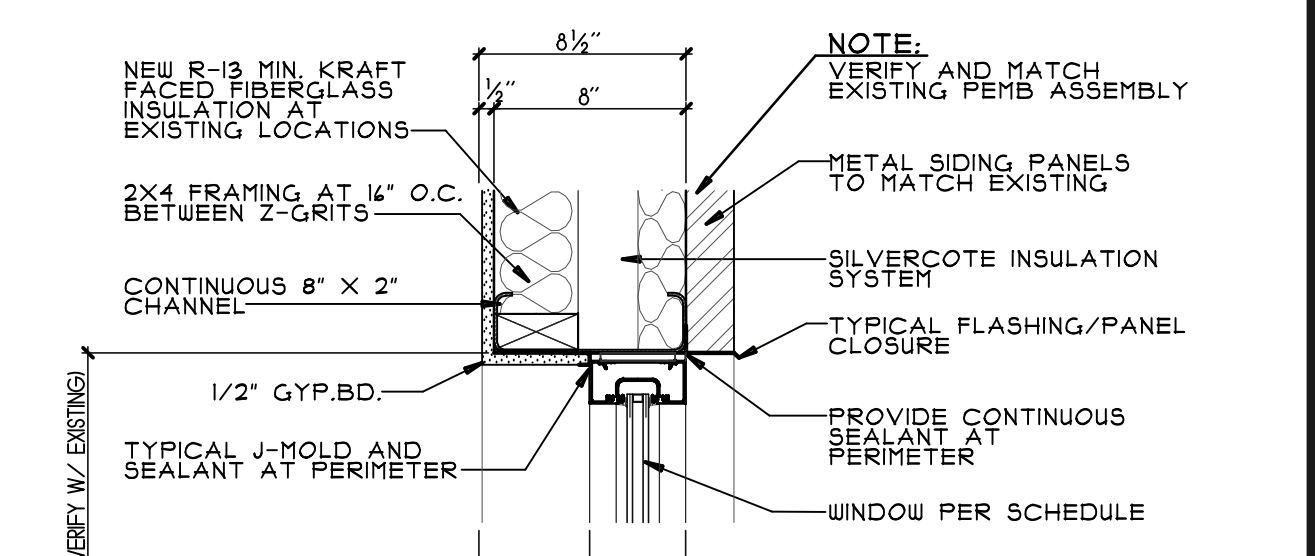
PATIO SILL DETAIL SCALE: 1 1/2" = 1'-0" 9



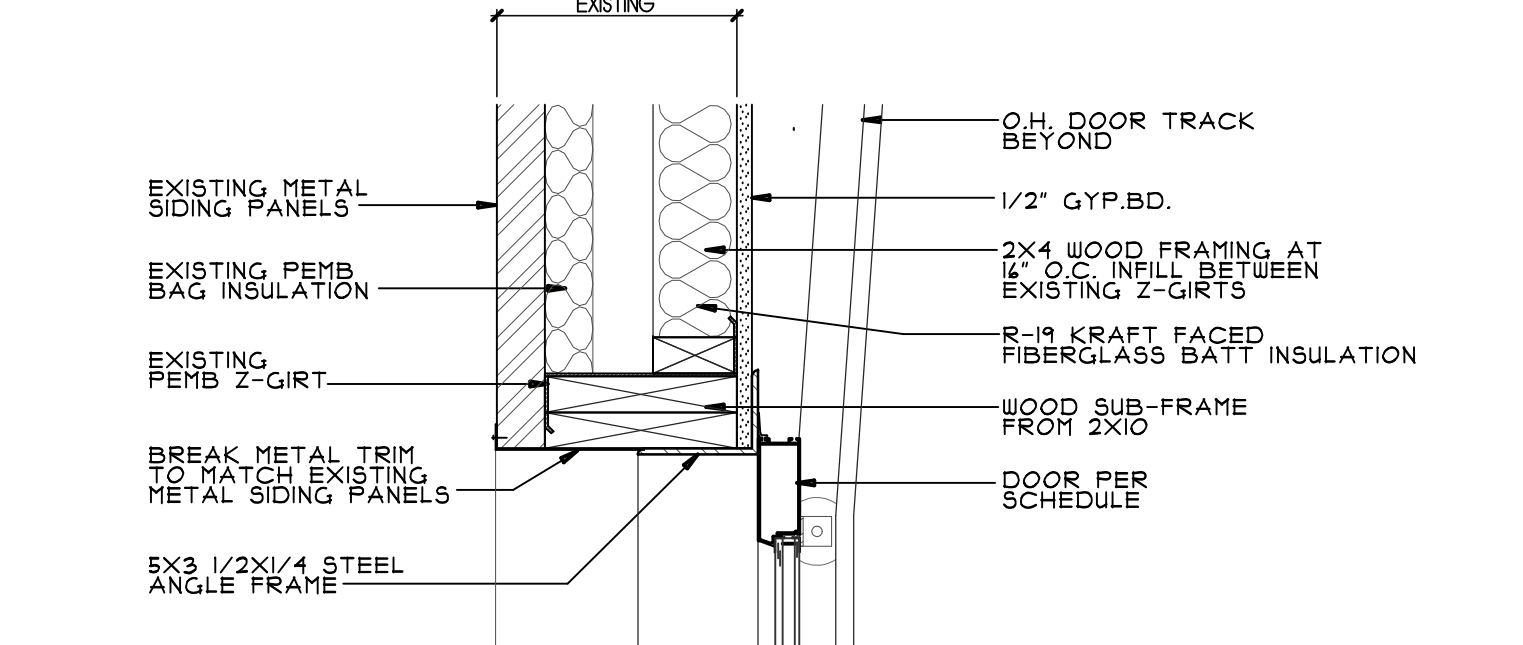
SILL DETAIL SCALE: 1 1/2" = 1'-0" 8



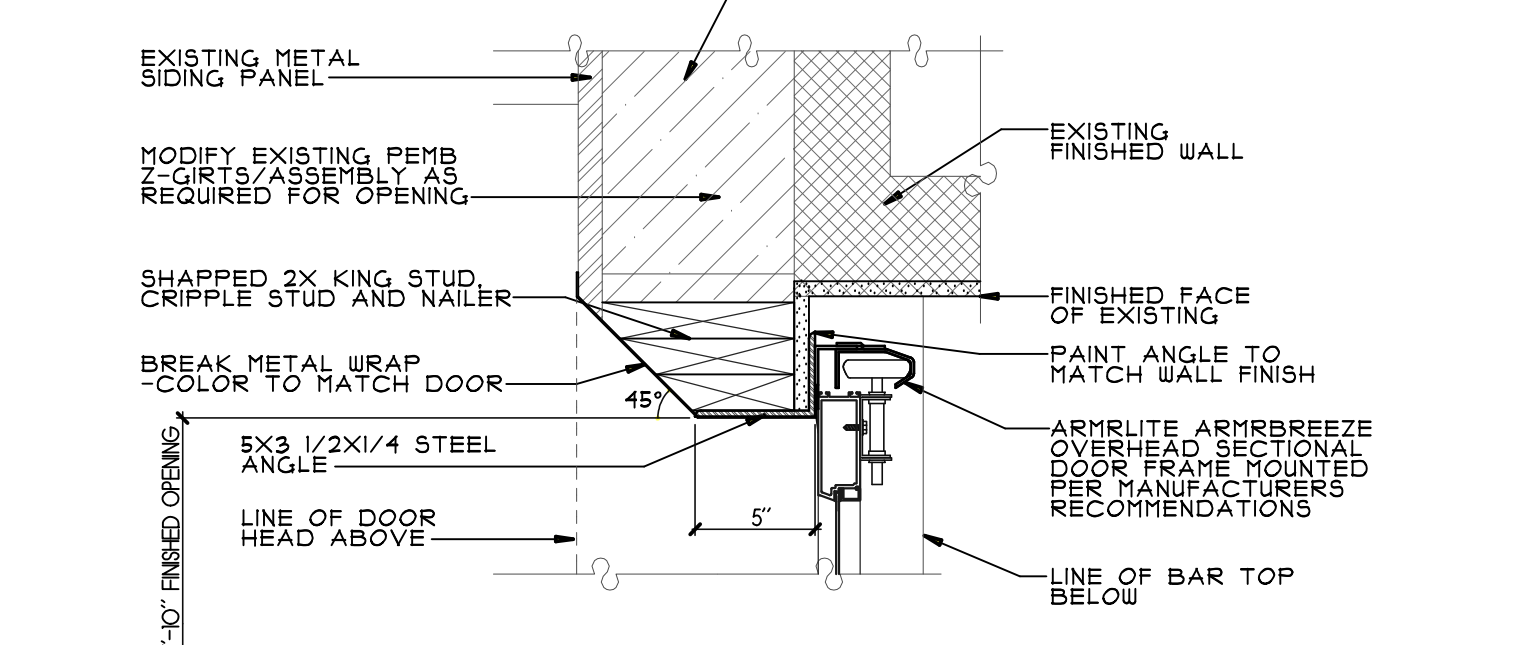
JAMB DETAIL SCALE: 1 1/2" = 1'-0" 7



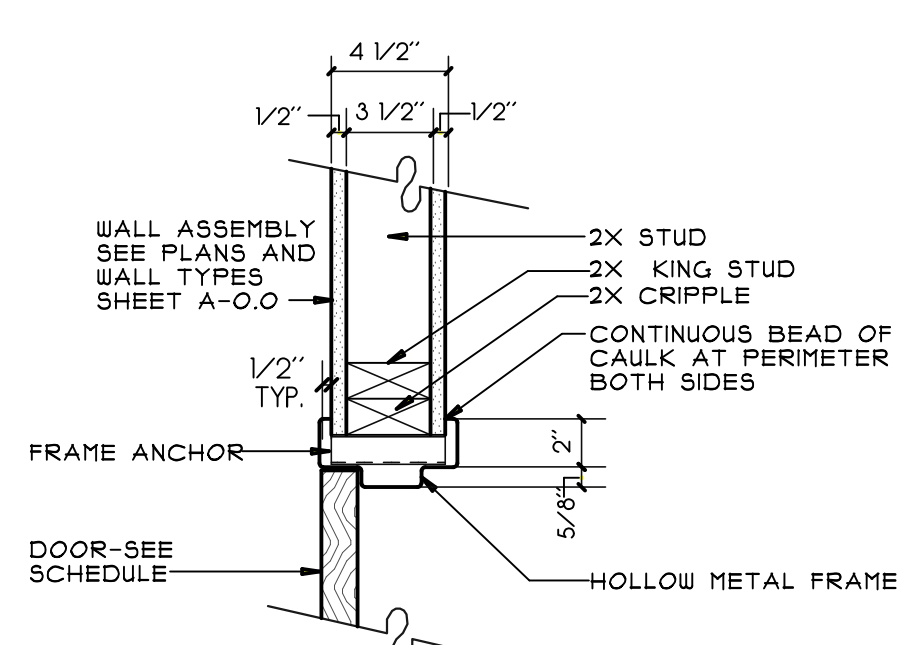
HEADER DETAIL SCALE: 1 1/2" = 1'-0" 6



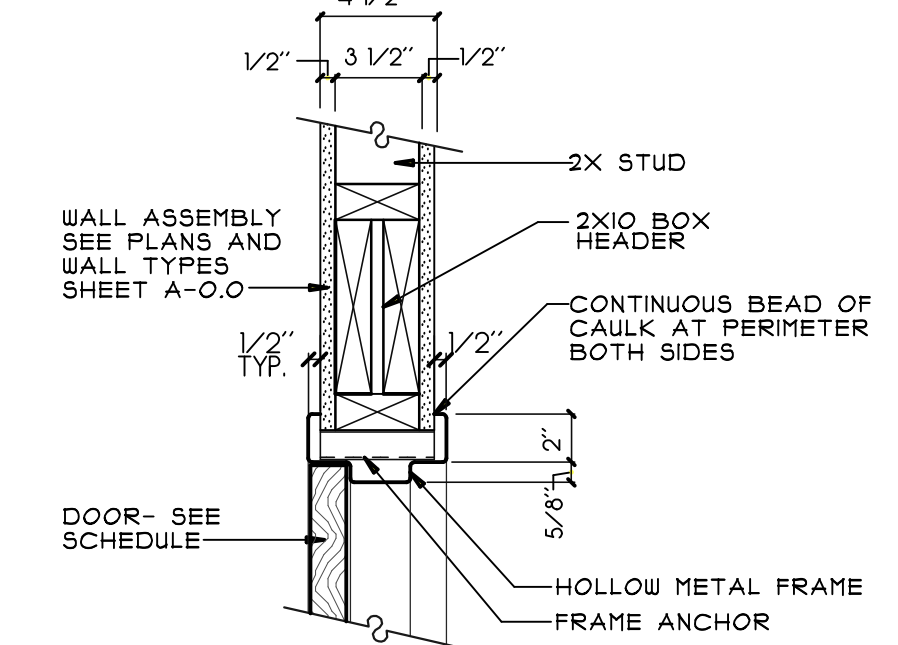
OVERHEAD DOOR HEAD DETAIL SCALE: 1 1/2" = 1'-0" 5



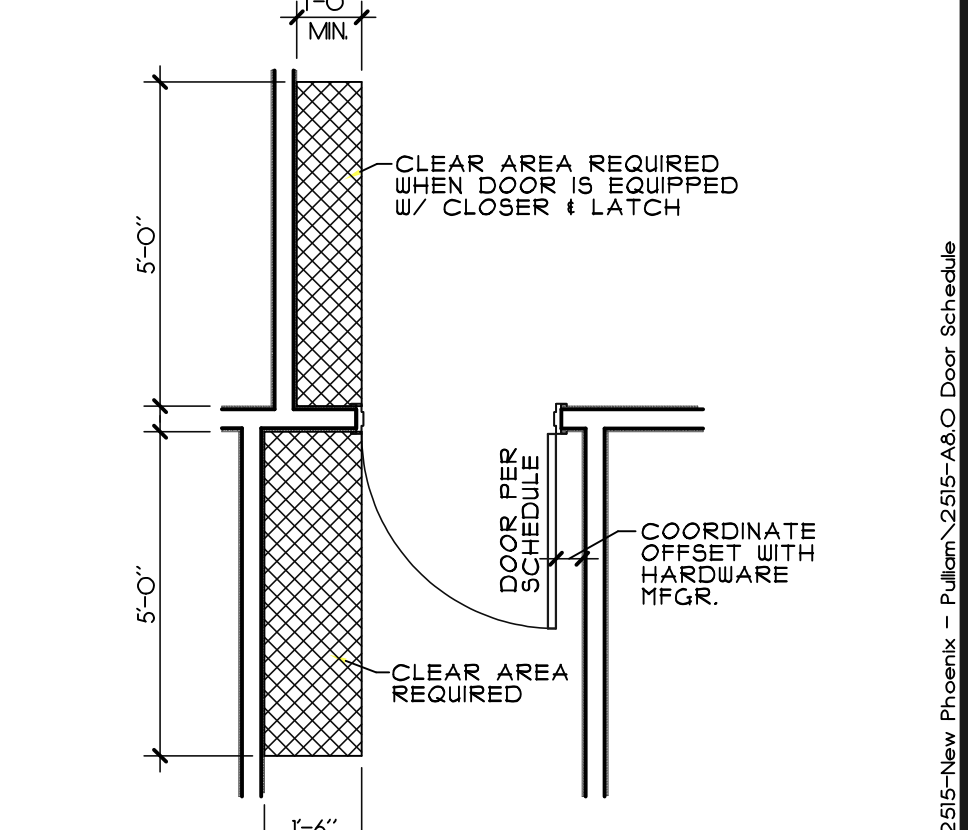
JAMB DETAIL SCALE: 1 1/2" = 1'-0" 4



JAMB DETAIL SCALE: 1 1/2" = 1'-0" 3



HEADER DETAIL SCALE: 1 1/2" = 1'-0" 2



DOOR CLEARANCE DIAGRAM - TYP. SCALE: N.T.S. 1

REVISIONS

NO.	DATE	DESCRIPTION

DATE OF THIS PLOT: Wednesday, March 11, 2026

STATE OF GEORGIA
HOMER LEWIS & ASSOCIATES, INC.
REGISTERED ARCHITECT
63112008

Homer Lewis & Associates, Inc.
230 River Cove Meadows
Social Circle, Ga. 30025
(678) 210-1007

RESTAURANT BUILDOUT AND ADDITION FOR EAST HAVEN, LLC
651 OLD PHOENIX ROAD
EATONTON, GEORGIA 31024

RELEASED FOR CONSTRUCTION

DRAWN: JFW/R/BTL
CHECKED: HRL
JOB NUMBER: 2515
SCALE: AS NOTED
DATE: MARCH 11, 2026
SHEET: A-8.0

1 OF 8