

DRAWINGS AND SPECIFICATIONS ARE INSTRUMENTS OF SERVICE AND SHALL REMAIN THE PROPERTY OF THIS CORPORATION WHETHER THE PROJECT FOR WHICH THEY ARE MADE IS EXECUTED OR NOT. THEY ARE NOT TO BE USED ON OTHER PROJECTS OR EXTENSION TO THIS PROJECT EXCEPT BY AGREEMENT IN WRITING AND APPROPRIATE COMPENSATION TO THIS CORPORATION.

Tag	HP - 1/AU-1
Manufacturer	Rheem
Model No	RD18AY60AJVCA
Air Handler No	RH2TY6024STANNJA
Cooling ODB (F)	87.6
Entering Dry Bulb (F)	80
Entering Wet Bulb (F)	67
Leaving Dry Bulb (F)	60
Leaving Wet Bulb (F)	58.3
Nominal Tons	
Total Clg Capacity (Btuh)	55,600
Sens. Clg Capacity (Btuh)	43,200
SEER	18
AHRI EER	11.7
IEER	n/a
Capacity @47 F (Btuh)	50,500
COP @47	3.08
Capacity @17 F (Btuh)	41,500
COP @17	2.4
Aux. Input (kW)	14.4
Voltage/Hz/Phase	208-230/60/1
MCA	43
Max Fuse	45
Weight (lbs)	306
Height (in)	58
Width (in)	19.8
Length (in)	40.4
Factory Options	Standard
HSPF	8.2

FAN SCHEDULE											
MARK	CFM	EXP.SP	RPM	T.S.	SONES	H.P.	MANUFACTURER	MODEL #	ROOF OPENING	WEIGHT	REMARKS
EF-1	75	0.25	717	1173	1.3	1/18	PENN	ZJ1	-	-	1,2

1. SPEED CONTROLLER.
2. CEILING MOUNTED WITH BACKDRAFT DAMPER.

AIR DISTRIBUTION SCHEDULE					
MARK	DESCRIPTION	KRUEGER MODEL	TITUS	PANEL SIZE	REMARKS
A	NAILOR "4320" PERFORATED SUPPLY AIR CEILING DIFFUSER.	6604	PAS	24X24	1,2,3
B	NAILOR "51EC" EGGRATE 1/2" X 1/2" X 1/2" GRID RETURN AIR GRILLE.	ECG5	50P	24X24	1
C	NAILOR "61DV-0" SUPPLY AIR DOUBLE DEFLECTION REGISTER. SEE FLOOR PLAN FOR SIZE.	880-V-0BD	272RL	SEE FLOOR PLAN	1,2,3
D	NAILOR "6145H" RETURN AIR GRILLE. SEE FLOOR PLAN FOR SIZE.	S80H	25R	SEE FLOOR PLAN	1

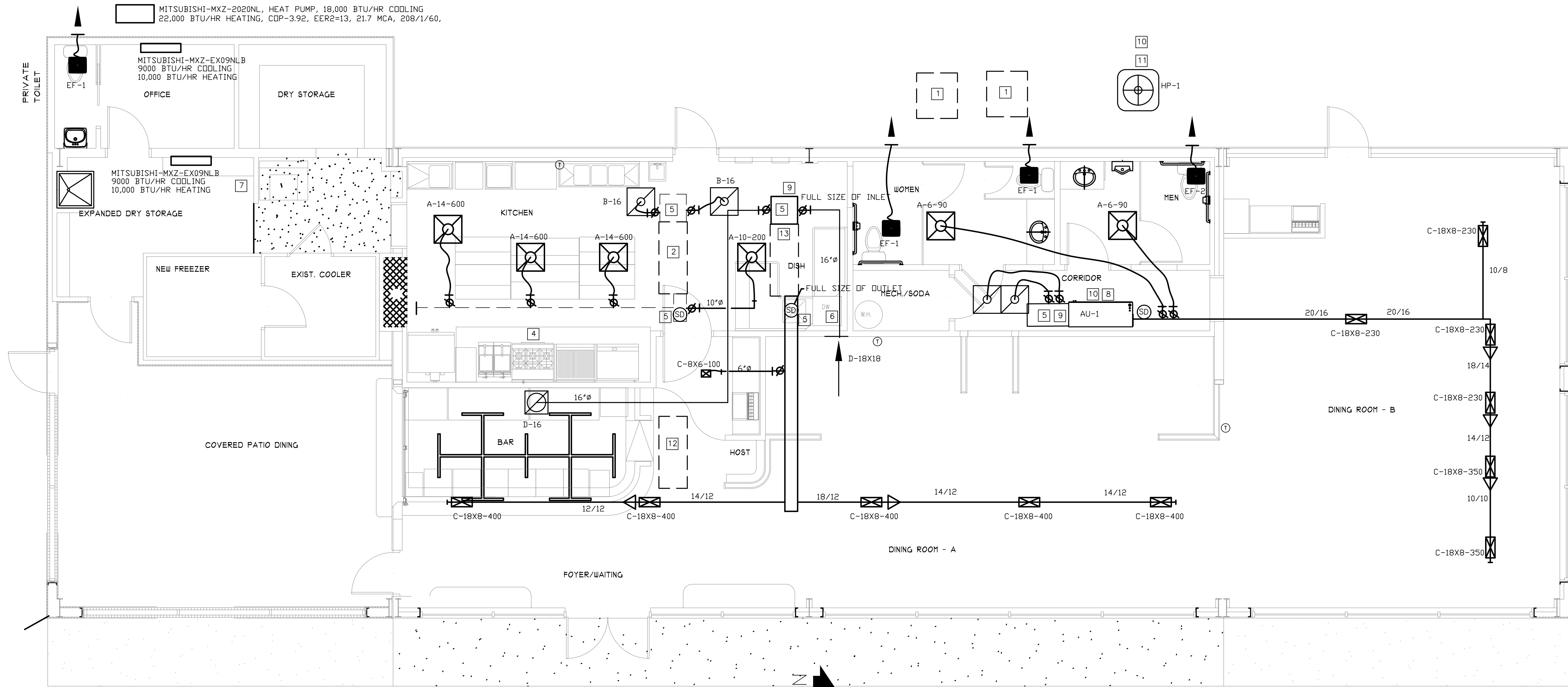
1. STEEL FINISH AND BORDER SHALL MATCH CEILING. SEE ARCHITECT DRAWING FOR THE TYPE OF CEILING.
2. MANUAL VOLUME DAMPER.
3. FACTORY INSULATED DIFFUSER AT UNCONDITIONED AREA OR NO RETURN AIR PLENUM.

KEY NOTES:

- EXISTING HEAT PUMP-XP14-060-230--09 (MCA-29.4)
- EXISTING AIRHANDLER- CBA27UHE--060--230-6-01 (MCA-77)
- CONNECT 6" TOILET EXHSUT DUCT FROM EF-2 TO THE EXISTING WALL LOUVER
- EXISTING KITCHEN HOOD, EXHAUST AND MAKE UP AIR DUCT TO REMAIN.
- PLENUM FULL SIZE OF UNIT CONNECTION
- DISHWASHER EXHAUST STAINLESS STEEL SYSTEM AS PER MANUFACTURER'S INSTRUCTION
- RELOCATE THE EXISTING WINDOW UNIT
- PROVIDE AUXILLIARY DRAIN PAN UNDER THE COOLING COIL. SEE HVAC GENERAL NOTES
- 12" OUTSIDE AIR INTAKE THROUGH ROOF OR SIDE WALL.
- MAINTAIN CLEARANCES AROUND AND BETWEEN UNITS AS RECOMMENDED BY MANUFACTURER.
- MOUNT CONDENSING UNIT ON 4" HIGH CONCRETE PAD.
- RELOCATE THE EXISTING AIRHANDLER- CBA27UHE--060--230-6-01 (MCA-77) TO THE KITCHEN
- NEW LOCATION OF THE AIRHANDLER

LEGEND

- D CONDENSATE DRAIN
- ☒ EXHAUST AIR
- SA SUPPLY AIR ☒
- RA RETURN AIR ☒
- ⊕ THERMOSTAT (PROGRAMMABLE)
- ⊙ SMOKE DETECTOR IN SUPPLY AIR DUCT AS PER GA. AMENDMENTS606.2.1
- A-8-100-CFM NECK SIZE AIR DISTRIBUTION DEVICE SEE SCHEDULE.
- ⊕ MVD SPIN IN FITTING WITH MANUAL VOLUME DAMPER
- MANUAL VOLUME DAMPER
- CONTINUOUS LINE INDICATES NEW DUCTWORK
- - - DASHED LINE INDICATES EXISTING DUCTWORK
- ⊘ DIAGONAL LINE IN ELBOW INDICATES TURNING VANES

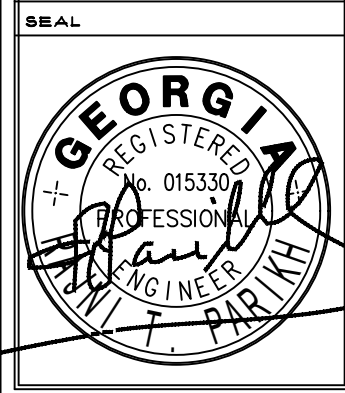


FLOOR PLAN-HVAC
1/4"=1'-0"

ALL NEW DUCTS SHALL BE AS PER SMACNA (SHEET METAL DUCTS), AND PROVIDE 2" INSULATION TO CONCEALED DUCTS.
ALL EXPOSED DUCT SHALL HAVE 1" ACOUSTICAL LINER TO PREVENT THE CONDENSATION THE DUCTS.

NO.	DATE	DESCRIPTION

DATE OF THIS PLOT:
Mar 03, 2026



Homer Lewis & Associates, Inc.
250 River Cove Meadows
Social Circle, Ga. 30025
(678) 210-1001

RESTAURANT BUILDOUT AND ADDITION
FOR EAST HAVEN, LLC.
451 OLD PHOENIX ROAD
EATONTON, GEORGIA 31024

RELEASED FOR CONSTRUCTION	
DRAWN BY	
CHECKED BY	
JOB NUMBER	255
SCALE	AS NOTED
DATE	2/7/2026
SHEET	M-1