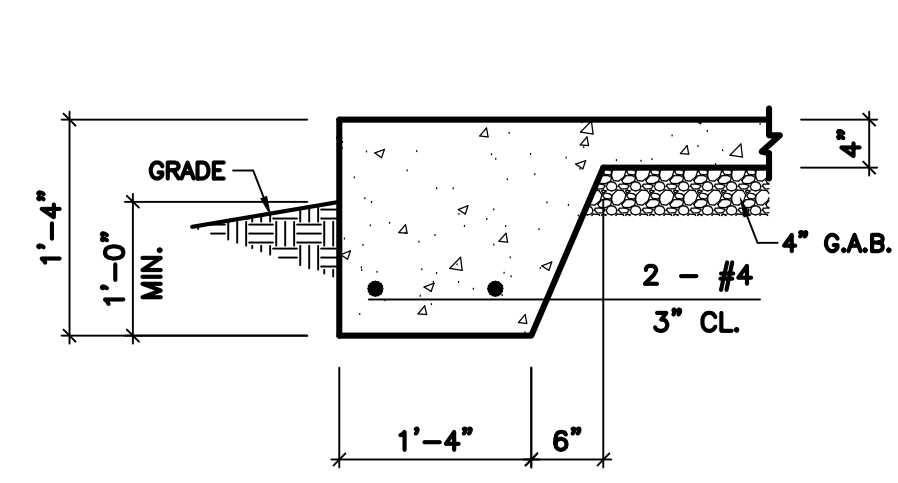
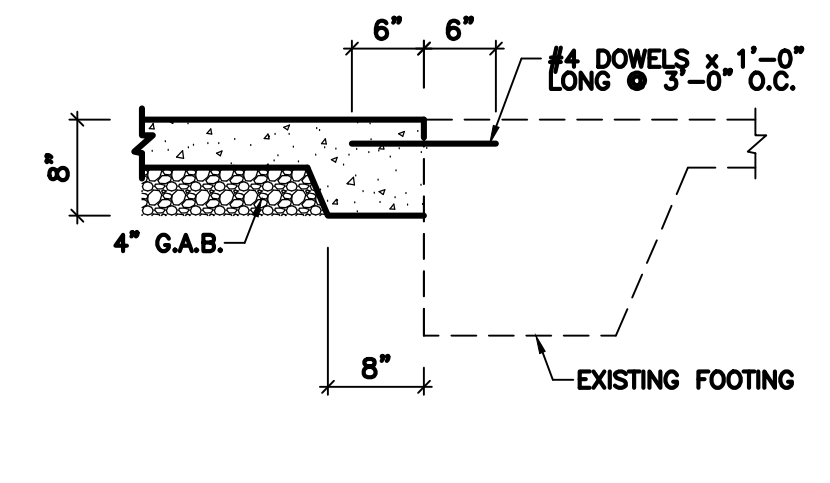


**FOUNDATION PLAN**

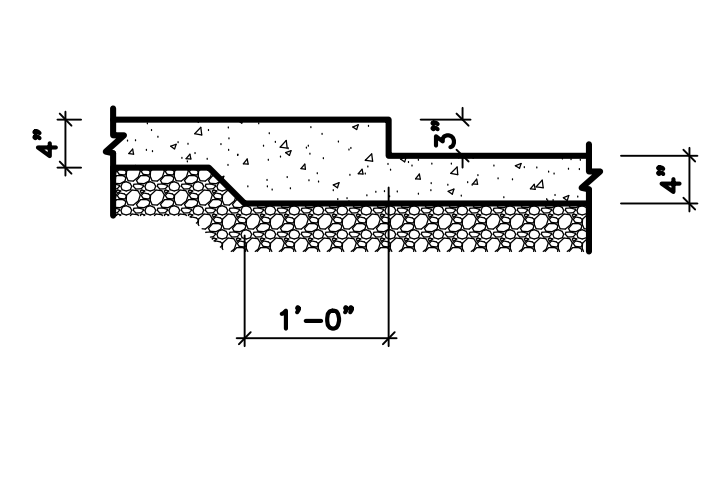
SCALE: 1/4" = 1'-0"



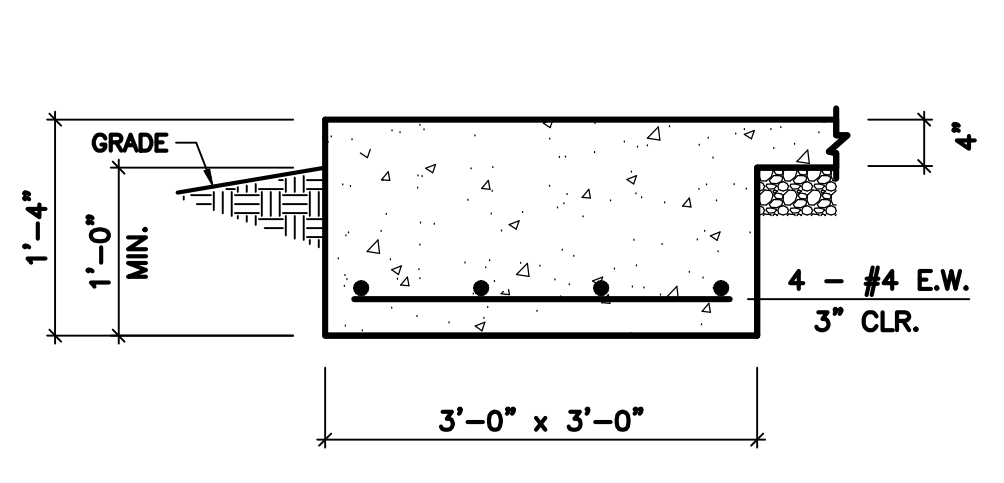
**SECTION 1**  
SCALE: 3/4" = 1'-0"



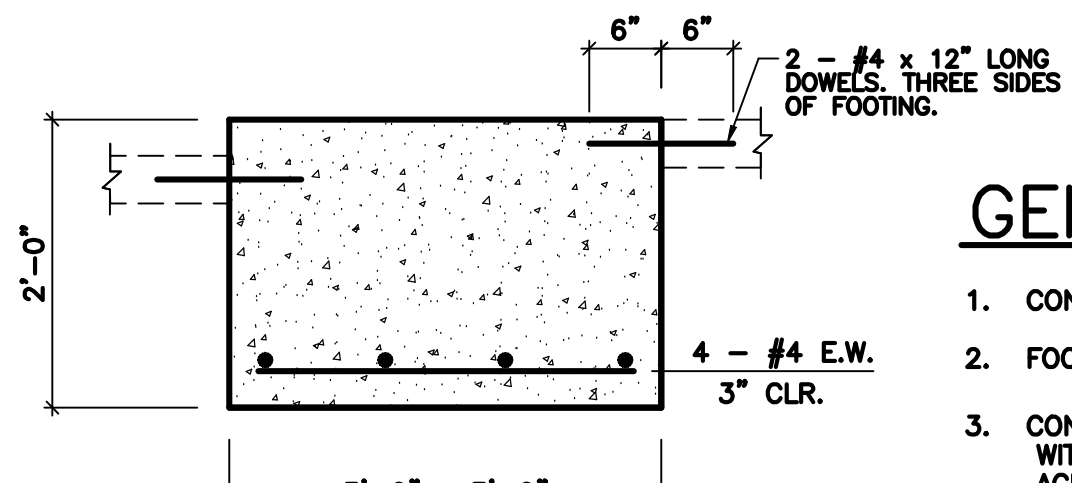
**SECTION 2**  
SCALE: 3/4" = 1'-0"



**SECTION 3**  
SCALE: 3/4" = 1'-0"



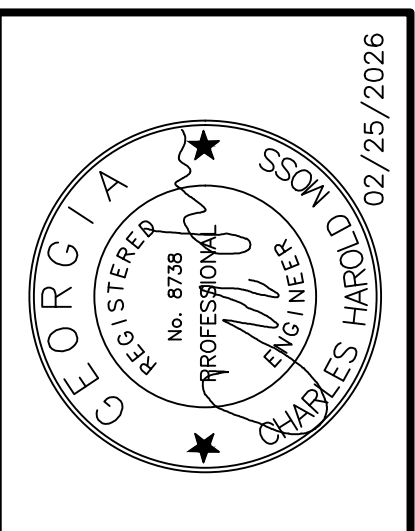
**FOOTING "A" DETAIL**  
SCALE: 3/4" = 1'-0"



**FOOTING "B" DETAIL**  
SCALE: 3/4" = 1'-0"

**GENERAL NOTES**

- CONTRACTOR SHALL BE RESPONSIBLE FOR BRACING ALL WORK DURING CONSTRUCTION.
- FOOTINGS ARE DESIGNED FOR AN ALLOWABLE BEARING CAPACITY OF 2000 P.S.F.
- CONCRETE SHALL HAVE A MINIMUM 28 DAY COMPRESSIVE STRENGTH OF 3000 P.S.I. WITH A 4" MAXIMUM SLUMP. DETAILS NOT SHOWN SHALL BE ACCORDING TO ACI 318 AND ACI 301 SPECIFICATIONS FOR CONCRETE CONSTRUCTION.
  - REINFORCING STEEL SHALL BE ASTM A-615 GRADE 60 (TIES MAY BE GRADE 40)
  - W.W.F. SHALL BE ASTM A-185
  - MINIMUM LAP: #4 - 28"
  - #5 - 32"
  - MINIMUM COVER: 3" U.N.O.
- C.J. ON PLANS INDICATE CONTROL JOINT 1/8" x 1" DEEP SAWN WITHIN 24 HOURS AFTER PLACING CONCRETE. METAL JOINT MATERIAL MAY BE USED.



**C.H. Moss & Associates, Inc.**  
ENGINEERS & CONSULTANTS  
P.O. BOX 28  
COWINGTON, GA 30015  
(770)-786-3163

NO	DATE	REVISION	BY

JOB NO.	
COMPUTED BY:	LH
DRAWN BY:	HM
CHECKED BY:	
DATE:	FEBRUARY 25, 2026
SCALE:	1/4" = 1'-0"

FOUNDATION PLAN FOR:  
**RESTAURANT BUILDOUT & ADDITION**  
**FOR EAST HAVEN, LLC**  
EATONTON, GA

DRAWING NUMBER  
**4796**

SHEET	OF:
S-1	1