

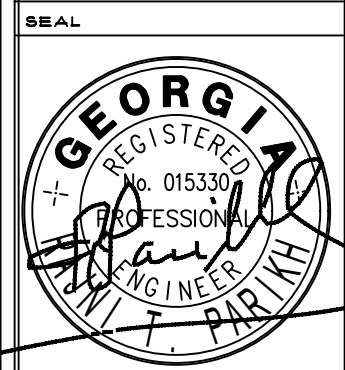
DRAWINGS AND SPECIFICATIONS ARE INSTRUMENTS OF SERVICE AND SHALL REMAIN THE PROPERTY OF THIS CORPORATION WHETHER THE PROJECT FOR WHICH THEY ARE MADE IS EXECUTED OR NOT. THEY ARE NOT TO BE USED ON OTHER PROJECTS OR EXTENSION TO THIS PROJECT EXCEPT BY AGREEMENT IN WRITING AND APPROPRIATE COMPENSATION TO THIS CORPORATION.

LEGEND	
ALL SYMBOLS MAY NOT BE USED ON THIS PROJECT MOUNTING HEIGHT FROM THE CENTER OF ITEM	
EMERGENCY/EXIT	
	BATTERY OPERATED EMERGENCY LIGHT W/TWO HEADS (WALL MOUNTED)
	COMBINATION LED EXIT LIGHT & BATTERY LIGHT
POWER/MOTORS	
	MOTOR
	DISCONNECT SWITCH, AMPS/POLES/FUSE
	PANELBOARD
SIGNAL COMMUNICATIONS	
	TELEPHONE/DATA OUTLET 18" AFF, RUN 3/4" CONDUIT WITH PULL STRING 0'-6" ABOVE CEILING AND/OR INSULATION.
	TELEVISION OUTLET, STUB 1" CONDUIT, WITH PULL STRING
WIRING	
	SINGLE POLE SWITCH, 3"6" AFF
	SENSORWORX-823-XX DIMMING WALL SWITCH
	SUBSCRIPT INDICATES NUMBER OF POLES FOR SWITCH 3 FOR 3 WAY, 4 FOR 4 WAY, M FOR MOTOR CONTROLLER
	CONDUIT IN WALL OR ABOVE CEILING
	CONDUIT IN FLOOR SLAB OR UNDER GROUND
	EXPOSED CONDUIT
	HOME RUN, 2#12 AND 1#12 GROUND COPPER THHN 1/2"C OR AS NOTED.
	JUNCTION BOX, CEILING WALL
	SENSORWORX-SWX-121-XX WALL OCCUPANCY LIGHT SWITCH SWX-900-X POWER PAK

RECEPTACLES/WIRING DEVICES	
	DUPLEX OUTLET, 20A, 125V, HUBBELL #C8R20* OR EQUAL (MOUNT 18" A.F.F.)
	DUPLEX OUTLET MOUNTED ABOVE COUNTER (COORDINATE W/CABINET WORK)
	DUPLEX OUTLET W/G.F.I., HUBBELL #GF5352*A OR EQUAL (MOUNT 18" AFF)
	DUPLEX OUTLET W/G.F.I. MOUNTED ABOVE COUNTER
	SPECIAL OUTLET, CHARACTERISTICS AS NOTED
	QUADRAPLEX RECEPTACLE, HUBBELL #HBL420* OR EQUAL (MOUNT 18" AFF)

NO.	DATE	DESCRIPTION

DATE OF THIS PLOT:
Apr 01, 2026

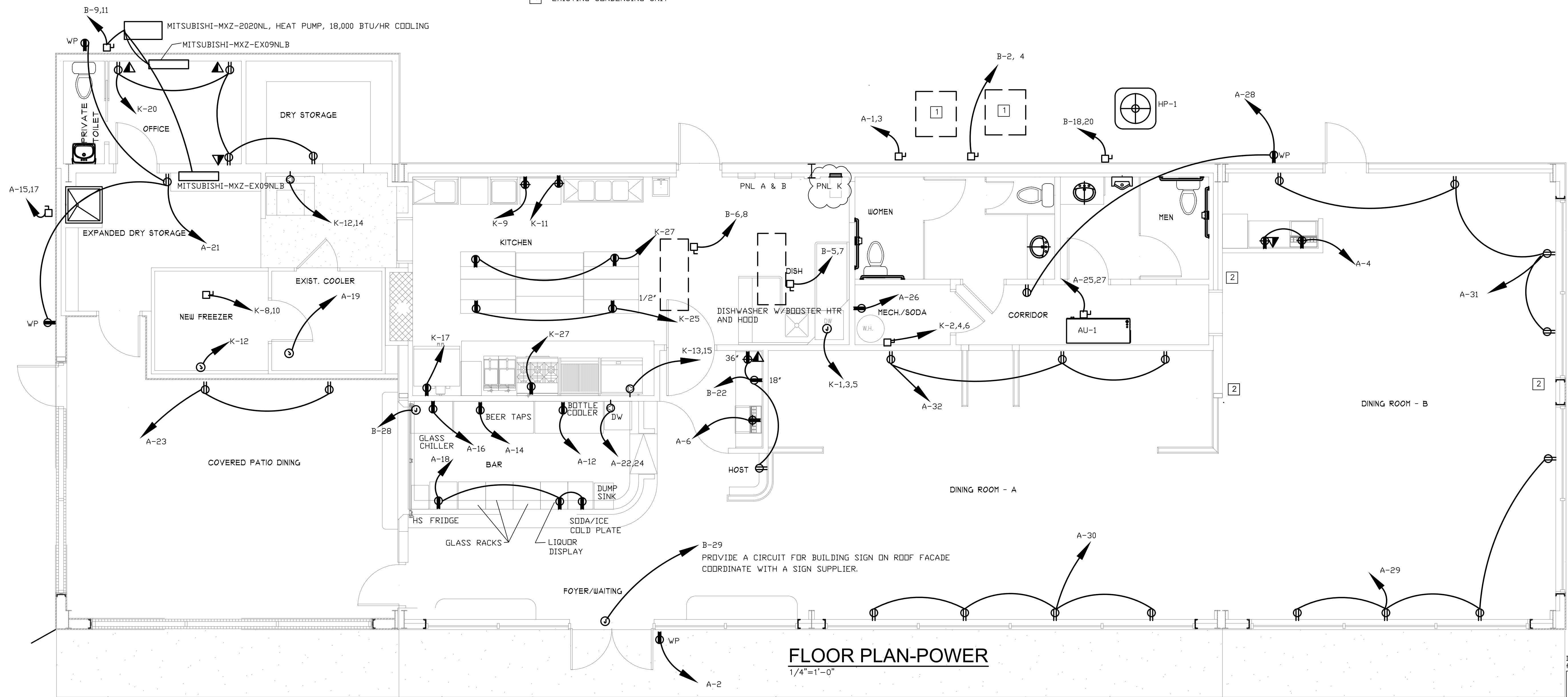


Homer Lewis & Associates, Inc.
250 River Cove Meadows
Social Circle, Ga. 30025
(678) 210-1001

RESTAURANT BUILDOUT AND ADDITION
FOR EAST HAVEN, LLC.
451 OLD PHOENIX ROAD
EATONTON, GEORGIA 31024

RELEASED FOR CONSTRUCTION	
DRAWN BY	
CHECKED BY	
JOB NUMBER	255
SCALE	AS NOTED
DATE	2/7/2026
SHEET	E-1

KEY NOTES
1 EXISTING CONDENSING UNIT



FLOOR PLAN-POWER
1/4"=1'-0"

Date Plotted : Apr 01, 2026 - 3:04pm
File: 2025-019E1-031626.DWG
RAJNI T. PARIKH, P.E.
2981 LULLWATER PLACE, LAWRENCEVILLE, GA. 30043
EMAIL: AMECL1@GMAIL.COM