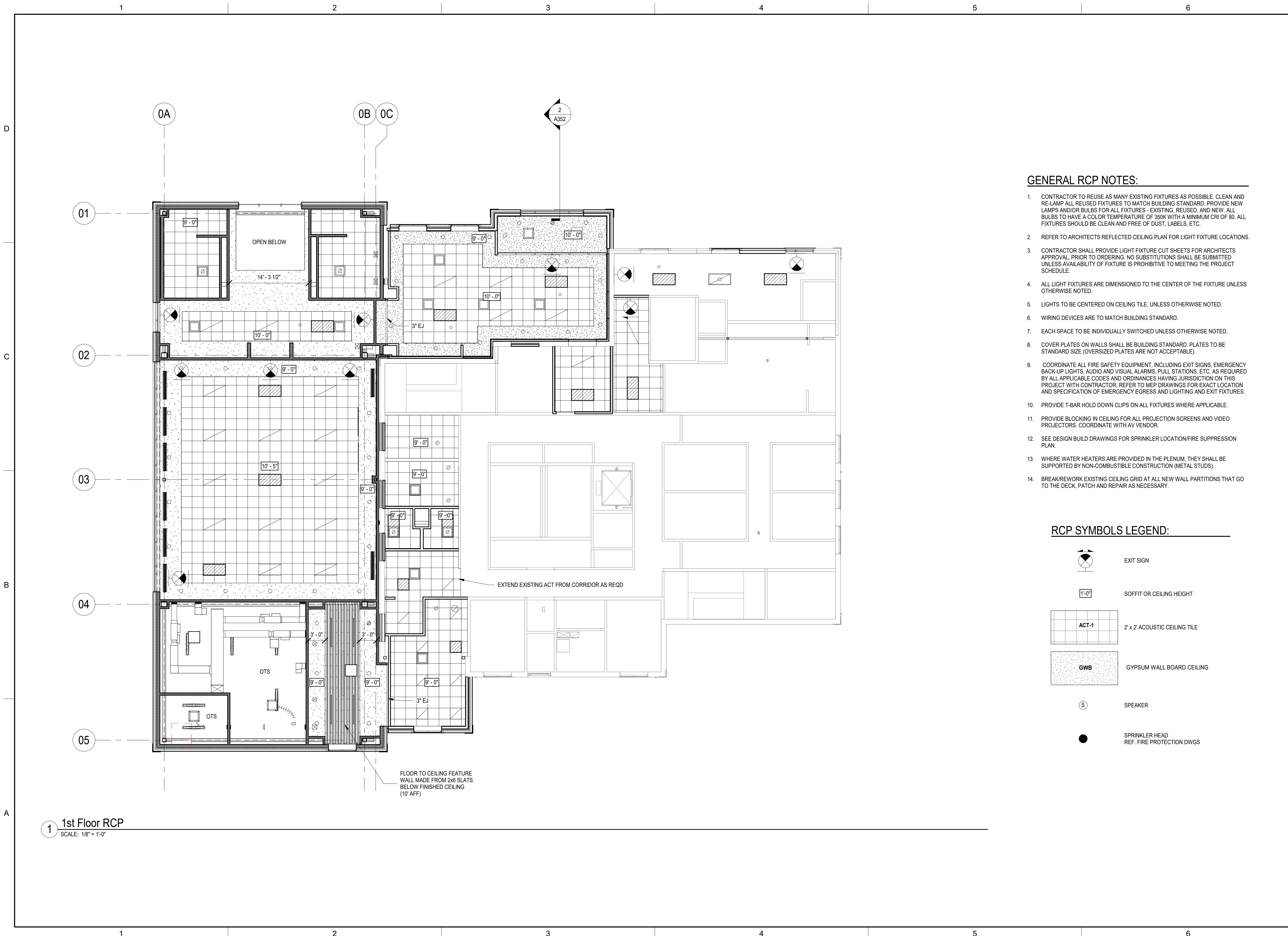


Plot Date: 4/27/2026 11:27:08 PM Path: C:\Users\imw4\OneDrive - Wendel\Documents\616202-NCWSA-ARCH_V25(Central)_mworden\FW47.rvt

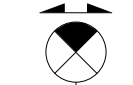
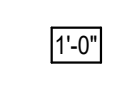
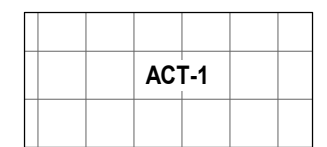





1 1st Floor RCP
SCALE: 1/8" = 1'-0"

GENERAL RCP NOTES:

- CONTRACTOR TO REUSE AS MANY EXISTING FIXTURES AS POSSIBLE. CLEAN AND RE-LAMP ALL REUSED FIXTURES TO MATCH BUILDING STANDARD. PROVIDE NEW LAMPS AND/OR BULBS FOR ALL FIXTURES - EXISTING, REUSED, AND NEW. ALL BULBS TO HAVE A COLOR TEMPERATURE OF 350K WITH A MINIMUM CRI OF 80. ALL FIXTURES SHOULD BE CLEAN AND FREE OF DUST, LABELS, ETC.
- REFER TO ARCHITECTS REFLECTED CEILING PLAN FOR LIGHT FIXTURE LOCATIONS.
- CONTRACTOR SHALL PROVIDE LIGHT FIXTURE CUT SHEETS FOR ARCHITECTS APPROVAL, PRIOR TO ORDERING. NO SUBSTITUTIONS SHALL BE SUBMITTED UNLESS AVAILABILITY OF FIXTURE IS PROHIBITIVE TO MEETING THE PROJECT SCHEDULE.
- ALL LIGHT FIXTURES ARE DIMENSIONED TO THE CENTER OF THE FIXTURE UNLESS OTHERWISE NOTED.
- LIGHTS TO BE CENTERED ON CEILING TILE, UNLESS OTHERWISE NOTED.
- WIRING DEVICES ARE TO MATCH BUILDING STANDARD.
- EACH SPACE TO BE INDIVIDUALLY SWITCHED UNLESS OTHERWISE NOTED.
- COVER PLATES ON WALLS SHALL BE BUILDING STANDARD. PLATES TO BE STANDARD SIZE (OVERSIZED PLATES ARE NOT ACCEPTABLE).
- COORDINATE ALL FIRE SAFETY EQUIPMENT, INCLUDING EXIT SIGNS, EMERGENCY BACK-UP LIGHTS, AUDIO AND VISUAL ALARMS, PULL STATIONS, ETC. AS REQUIRED BY ALL APPLICABLE CODES AND ORDINANCES HAVING JURISDICTION ON THIS PROJECT WITH CONTRACTOR. REFER TO MEP DRAWINGS FOR EXACT LOCATION AND SPECIFICATION OF EMERGENCY EGRESS AND LIGHTING AND EXIT FIXTURES.
- PROVIDE T-BAR HOLD DOWN CLIPS ON ALL FIXTURES WHERE APPLICABLE.
- PROVIDE BLOCKING IN CEILING FOR ALL PROJECTION SCREENS AND VIDEO PROJECTORS. COORDINATE WITH AV VENDOR.
- SEE DESIGN BUILD DRAWINGS FOR SPRINKLER LOCATION/FIRE SUPPRESSION PLAN.
- WHERE WATER HEATERS ARE PROVIDED IN THE PLENUM, THEY SHALL BE SUPPORTED BY NON-COMBUSTIBLE CONSTRUCTION (METAL STUDS).
- BREAK/REWORK EXISTING CEILING GRID AT ALL NEW WALL PARTITIONS THAT GO TO THE DECK, PATCH AND REPAIR AS NECESSARY.

RCP SYMBOLS LEGEND:

-  EXIT SIGN
-  SOFFIT OR CEILING HEIGHT
-  2' x 2' ACOUSTIC CEILING TILE
-  GYPSUM WALL BOARD CEILING
-  SPEAKER
-  SPRINKLER HEAD
REF. FIRE PROTECTION DWGS



THIS DRAWING IS NOT VALID FOR CONSTRUCTION PURPOSES UNLESS IT BEARS THE SEAL AND SIGNATURE OF A DULY REGISTERED PROFESSIONAL

CONSTRUCTION DOCUMENTS



NCWSA OFFICE ADDITION

REVISIONS		
REV	DATE	DESCRIPTION

LINE IS 2 INCHES AT FULL SIZE

DESIGNED: Designer
DRAWN: Author
CHECKED: Checker
CHECKED:
APPROVED: Approver

FILENAME
BC PROJECT NUMBER
616202
CLIENT PROJECT NUMBER

1ST FLOOR - REFLECTED CEILING PLAN

DRAWING NUMBER
A701