

1

2

3

4

5

6

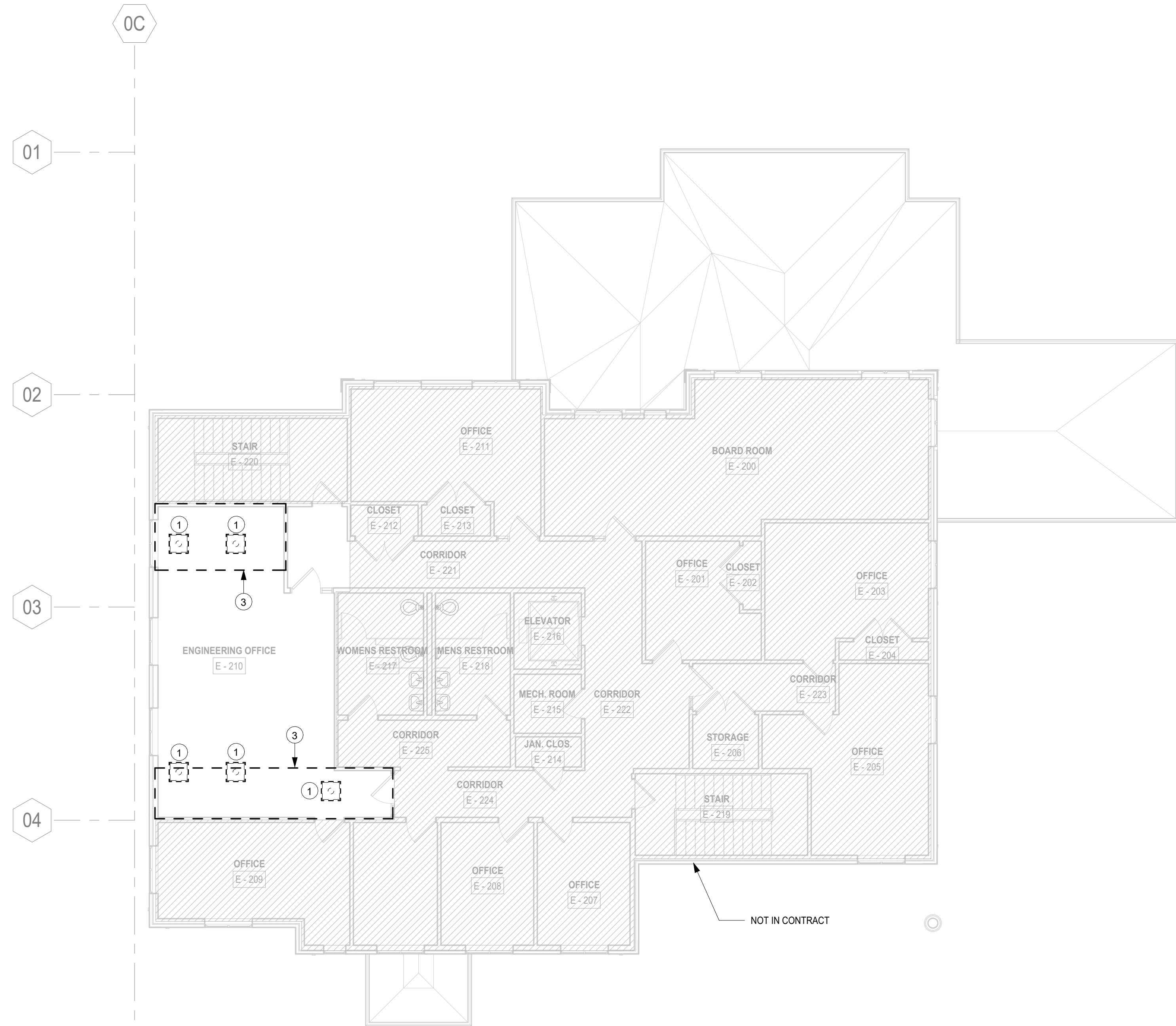
D

C

B

A

Plot Date: 4/27/2026 10:18:38 PM Path: Autodeskt Docs:\NCWSA Admin Bldg_VZ51616202-NCWSA-ELEC_VZ5.rvt



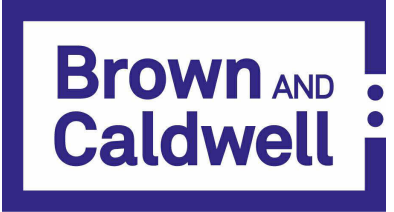
1 SECOND FLOOR LIGHTING PLAN - DEMOLITION
SCALE: 1/8" = 1'-0"

GENERAL DEMOLITION NOTES:

- A. MAINTAIN INTEGRITY OF EXISTING CIRCUIT WIRING PRESENTLY INSTALLED & SERVING EQUIPMENT OUTSIDE THE WORK AREA. VERIFY ROUTE OF EACH FEEDER & BRANCH CIRCUIT SCHEDULED FOR REMOVAL.
- B. PROVIDE PROTECTION FOR ALL EXISTING CONSTRUCTION SYSTEMS/EQUIPMENT SCHEDULED TO REMAIN DURING CONSTRUCTION. CONTRACTOR SHALL BE RESPONSIBLE FOR REPLACEMENT OR RECONDITIONING OF EQUIPMENT/ITEMS DAMAGED DURING REMOVALS.
- C. FIRE ALARM & SECURITY SYSTEMS SHALL REMAIN OPERATIONAL DURING CONSTRUCTION. PROVIDE TEMPORARY WIRING AS REQUIRED TO MAINTAIN FIRE ALARM SYSTEM DETECTION/NOTIFICATION THROUGHOUT CONSTRUCTION PHASE & OPERATION OF SECURITY SYSTEM. NOTIFY OWNER OF AREAS TO BE SHUTDOWN WHILE WORK IS BEING PERFORMED. FIRE ALARM & SECURITY SYSTEMS SHALL BE FULLY OPERATIONAL AT END OF EACH WORK DAY. CONTRACTOR SHALL NOT LEAVE ANY AREAS WITHOUT FIRE ALARM SYSTEM BEING FULLY FUNCTIONAL & SECURITY SYSTEM FULLY OPERATIONAL.
- D. UNLESS OTHERWISE NOTED, DISCONNECT & REMOVE ALL ELECTRICAL WORK ASSOCIATED WITH DEVICE/FIXTURES SCHEDULED FOR REMOVAL. ASSOCIATED ELECTRICAL WORK SHALL INCLUDE CONDUIT, BOXES, CONNECTORS, ETC. BACK TO SOURCE PANEL.
- E. CONTRACTOR SHALL PROPERLY DISPOSE OF ALL ELECTRICAL DEVICES & MISC. ITEMS AS REQUIRED. CONTRACTOR IS RESPONSIBLE FOR ANY COST ASSOCIATED WITH DISPOSAL.
- H. DEMOLITION SHOWN SHALL BE SELECTIVE. UNLESS OTHERWISE INDICATED ON THE PLAN, THE CONTRACTOR SHALL NOTIFY THE ENGINEER OF DISCREPANCIES FOUND IN THE FIELD PRIOR TO DEMOLITION OF ANY ITEMS NOT SHOWN. CONTRACTOR SHALL, AT HIS EXPENSE, REPLACE OR REPAIR ANY DEMOLISHED ITEM(S) THAT WERE NOT CALLED FOR ON THE PLANS OR BROUGHT TO ENGINEERS ATTENTION.

DEMOLITION NOTES:

- 1. DISCONNECT & REMOVE EXISTING LUMINAIRE & ALL ITS ASSOCIATED ELECTRICAL IN ITS ENTIRETY BACK TO SOURCE.
- 2. DISCONNECT & REMOVE EXISTING LIGHT SWITCH & ALL ITS ASSOCIATED ELECTRICAL IN ITS ENTIRETY BACK TO SOURCE.
- 3. DISCONNECT & REMOVE EXISTING LIGHTING ELECTRICAL IN THIS AREA. THIS INCLUDES LUMINAIRES, LIGHT SWITCHES, OCCUPANCY SENSORS, AND VACANCY SENSORS. DISCONNECT & REMOVE THE DEVICE/FIXTURE ITSELF & ALL ITS ASSOCIATED ELECTRICAL IN ITS ENTIRETY BACK TO SOURCE.



BROWN AND CALDWELL
900 HAMMOND DRIVE, SUITE 500
ATLANTA, GA 30328



THIS DRAWING IS NOT VALID FOR CONSTRUCTION PURPOSES UNLESS IT BEARS THE SEAL AND SIGNATURE OF A DULY REGISTERED PROFESSIONAL

60% DESIGN DOCUMENTS



NCWSA OFFICE ADDITION

REVISIONS

REV	DATE	DESCRIPTION

LINE IS 2 INCHES AT FULL SIZE

DESIGNED: MAP
DRAWN: MAP
CHECKED: JFW
CHECKED:
APPROVED:

FILENAME
BC PROJECT NUMBER 616202
CLIENT PROJECT NUMBER

SECOND FLOOR LIGHTING PLAN - DEMOLITION

DRAWING NUMBER
ED102

1

2

3

4

5

6