

PARTITION TYPES

PARTITION LEGEND

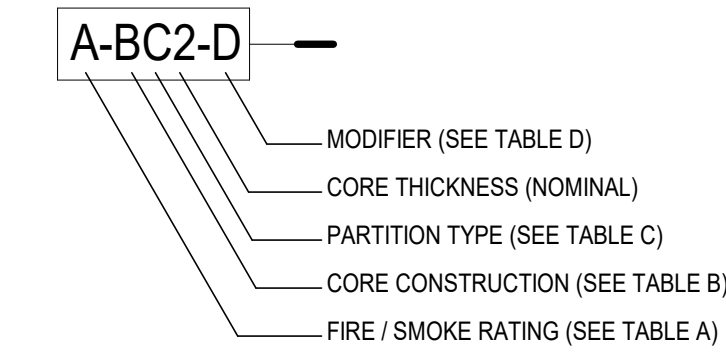
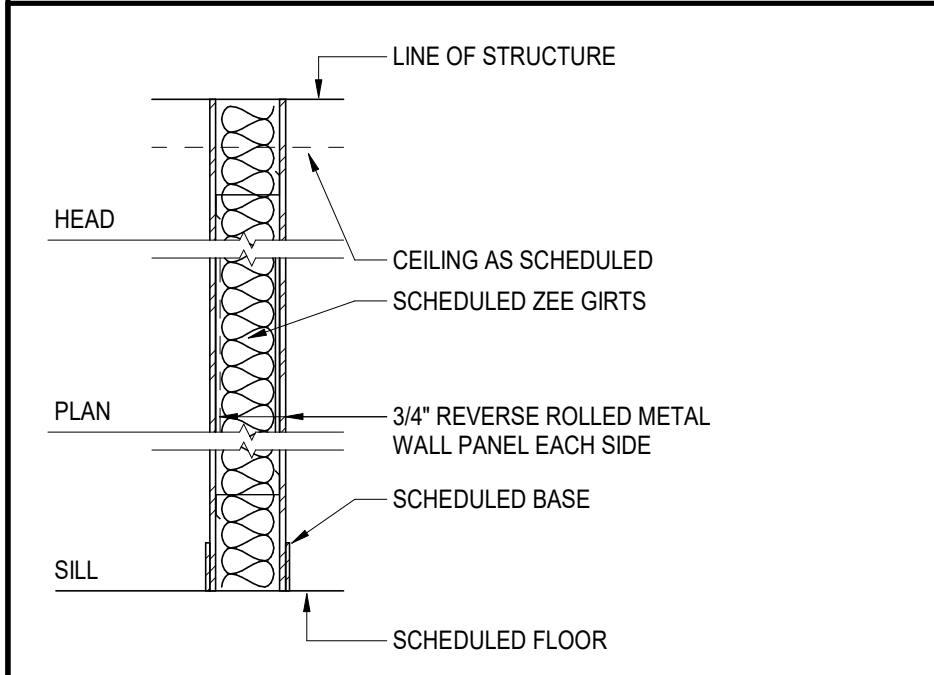


Table with 2 columns: TABLE A - FIRE / SMOKE RATING and TABLE C - PARTITION TYPE. Rows include 0 NON-RATED CONSTRUCTION, S NON-RATED SMOKE PARTITION, 1 1-HOUR FIRE RATED, 2 2-HOUR FIRE RATED, 3 3-HOUR FIRE RATED.

Table with 2 columns: TABLE B - CORE CONSTRUCTION and TABLE D - MODIFIERS. Rows include C CONCRETE - CAST-IN-PLACE, D DEMISING, L SPECIAL, M METAL, P PRE-CAST CONCRETE, S SHAFT LINER, T STONE, U MASONRY UNIT, W WOOD, Z Z-FURRING.

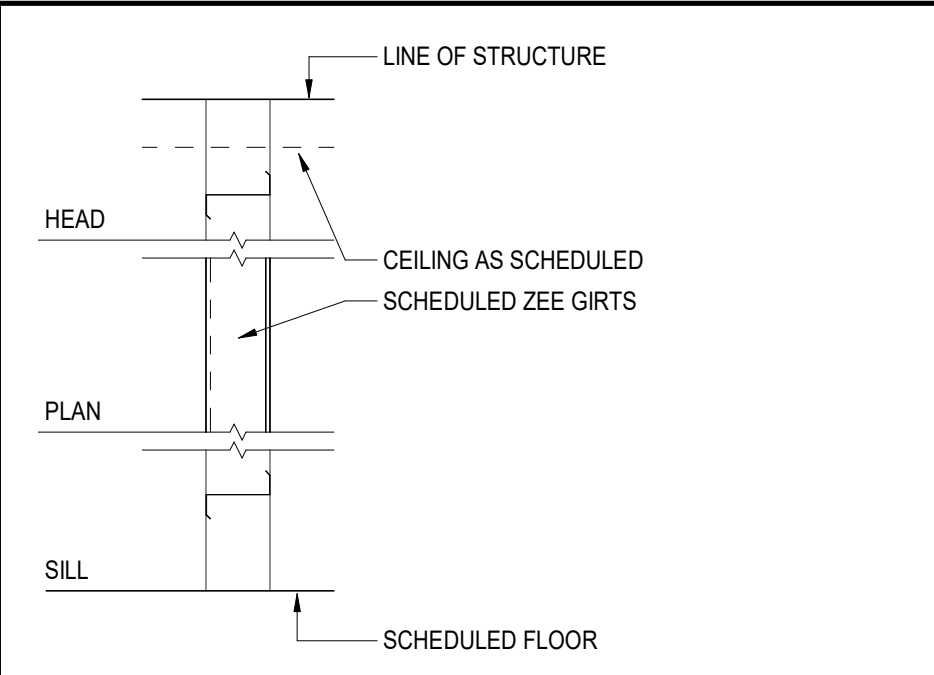
PARTITION NOTES

- 1. CONTRACTOR SHALL ADJUST STUD GAUGE AND/OR SPACING AND BRACE AS NECESSARY SO AS NOT TO EXCEED I240 DESIGN CRITERIA.
2. PROVIDE RATED WALLS ACCORDING TO THE FULL REQUIREMENTS OF THE INDICATED TEST NUMBER.
3. PROVIDE IN-WALL BLOCKING FOR MILLWORK, ARTWORK, FURNISHINGS, HARDWARE, WALL STOPS, TOILET ACCESSORIES, GRAB BARS, CLOSET RODS, HANDRAILS, WALL BUMPERS, MODULAR OFFICE WALLS, ETC.
4. REFER TO STRUCTURE FOR BEARING / NON-BEARING CONDITION WHEN THERE IS DISCREPANCY.
5. PROVIDE CONTINUOUS FIRESTOP AT TOP, BOTTOM, AND ENDS OF FIRE-RATED PARTITIONS AND AT ALL PENETRATIONS. PROVIDE RED COLOR IF DICTATED BY AUTHORITY HAVING JURISDICTION.
6. ALL FIRE-RATED WALLS AND SMOKE BARRIERS SHALL BE PERMANENTLY IDENTIFIED WITH SIGNS OR STENCILING ABOVE CEILING OR IN CONCEALED SPACES WITH LETTERS A MINIMUM OF 2" HIGH ON A CONTRASTING BACKGROUND SPACED AT A MAXIMUM OF 12" - 0" O.C. WITH A MINIMUM OF ONE PER WALL OR BARRIER IN ACCORDANCE WITH 2024 INTERNATIONAL FIRE CODE, 120-3-3 CHAPTER 5 OF THE RULES AND REGULATIONS OF THE FIRE SAFETY COMMISSIONER.
SUGGESTED WORDING: "(#) HOUR FIRE AND SMOKE BARRIER - PROTECT ALL OPENINGS"
APPLY LETTERING TO BOTH SIDES OF WALLS.
7. REFER TO STRUCTURAL DRAWINGS AND SPECIFICATIONS FOR ADDITIONAL INFORMATION ON STRUCTURAL REINFORCEMENT OF WALLS INCLUDING BUT NOT LIMITED TO PARTIAL HEIGHT WALLS, BRACING, REINFORCING, BOND BEAMS AND GROUT FILLING OF C.M.U. CORES.
8. AT ALL RESTROOMS, OFFICES AND SIMILAR SPACES, PROVIDE BACKLOADED SCHEDULED CEILING W/ SOUND BATT INSULATION A MINIMUM OF 4" - 0" ALONG EACH SIDE OF SCHEDULED PARTITIONS (TYP.)
9. STAGGER ELECTRICAL OUTLETS 12" MINIMUM AT ALL PARTITIONS.
10. ALL VERTICAL PIPING EXPOSED IN ROOMS SHALL BE FURRED WITH SAME MATERIAL AS ADJACENT WALLS. EXCEPTIONS ARE: MECHANICAL ROOMS, ELECTRICAL ROOMS, TELEPHONE ROOMS.
11. METAL STUD PARTITIONS BEHIND ALL PLUMBING AND OTHER FIXTURES SHALL BE BRACED TO STRUCTURE WHERE REQUIRED TO SUPPORT THE EQUIPMENT PROVIDED.



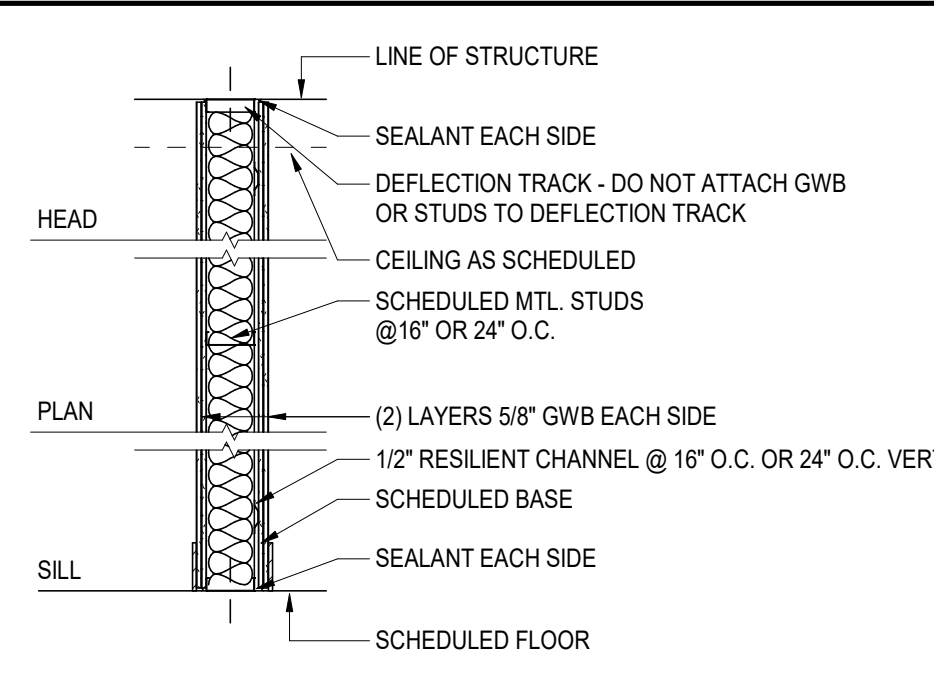
ZP

Table with 10 columns: WALL TYPE, FIRE RATING, STC RATING, STUD WIDTH, ASSEMBLED WIDTH, TESTED ASSEMBLY.



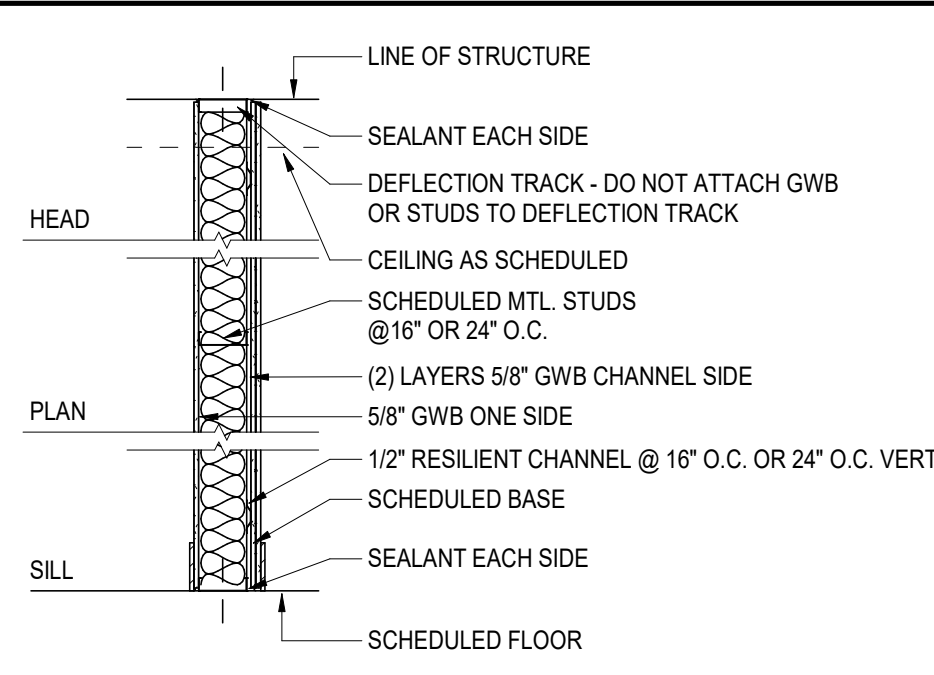
ZM

Table with 10 columns: WALL TYPE, FIRE RATING, STC RATING, STUD WIDTH, ASSEMBLED WIDTH, TESTED ASSEMBLY.



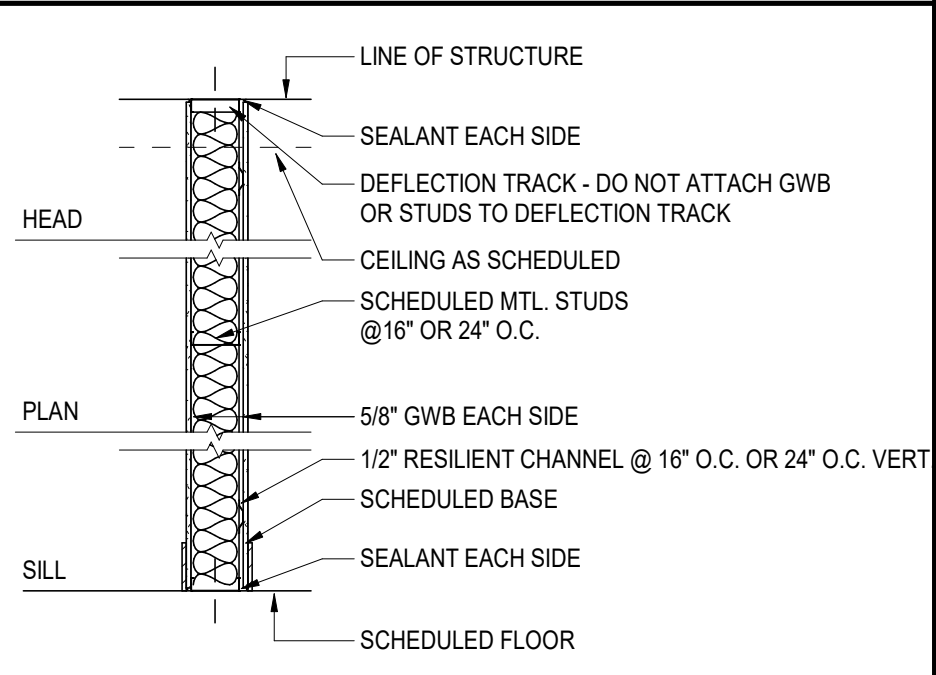
MH

Table with 10 columns: WALL TYPE, FIRE RATING, STC RATING, STUD WIDTH, ASSEMBLED WIDTH, TESTED ASSEMBLY.



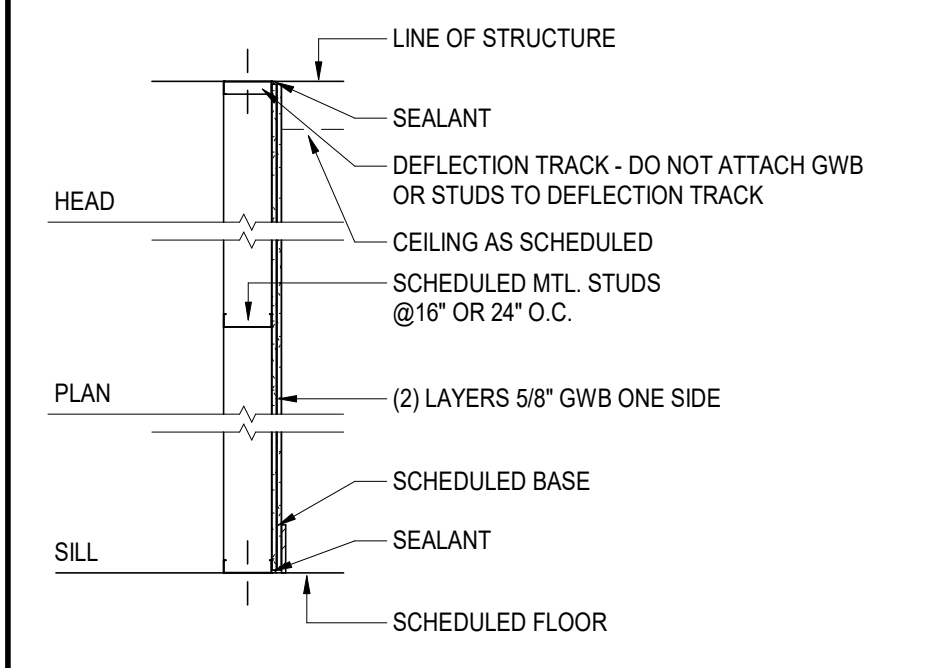
MG

Table with 10 columns: WALL TYPE, FIRE RATING, STC RATING, STUD WIDTH, ASSEMBLED WIDTH, TESTED ASSEMBLY.



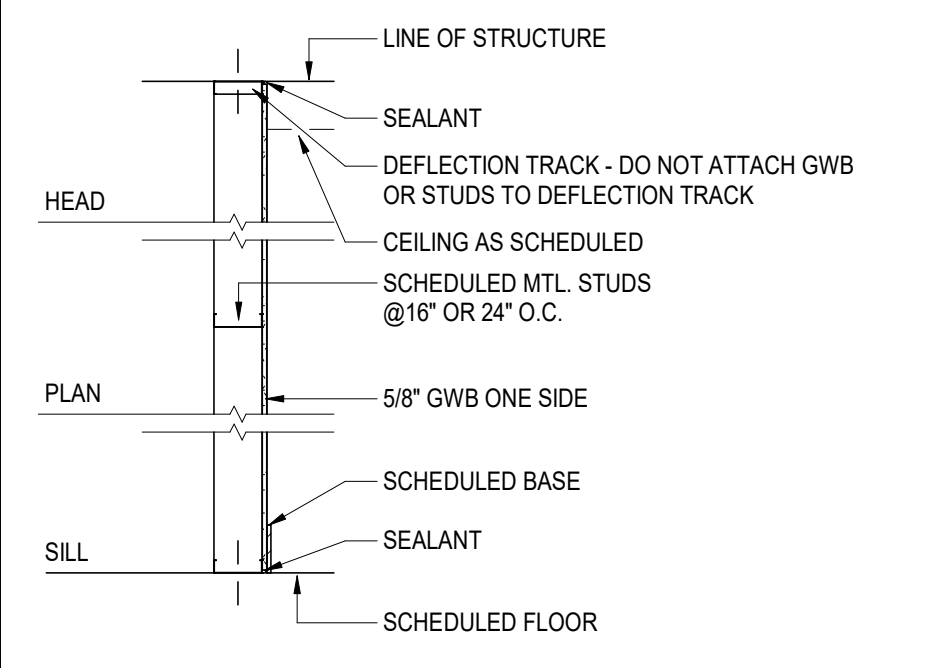
MF

Table with 10 columns: WALL TYPE, FIRE RATING, STC RATING, STUD WIDTH, ASSEMBLED WIDTH, TESTED ASSEMBLY.



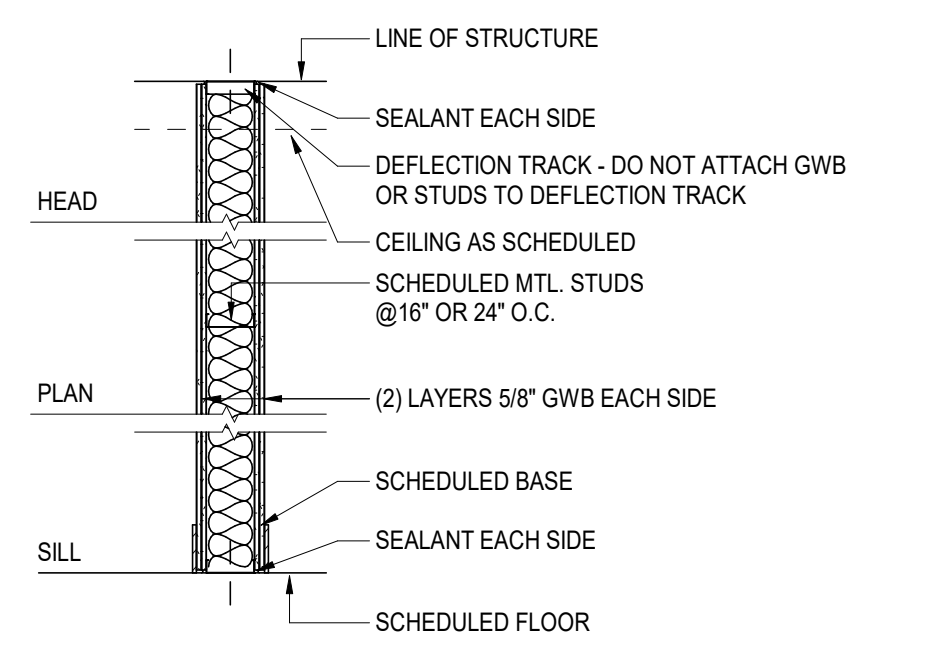
ME

Table with 10 columns: WALL TYPE, FIRE RATING, STC RATING, STUD WIDTH, ASSEMBLED WIDTH, TESTED ASSEMBLY.



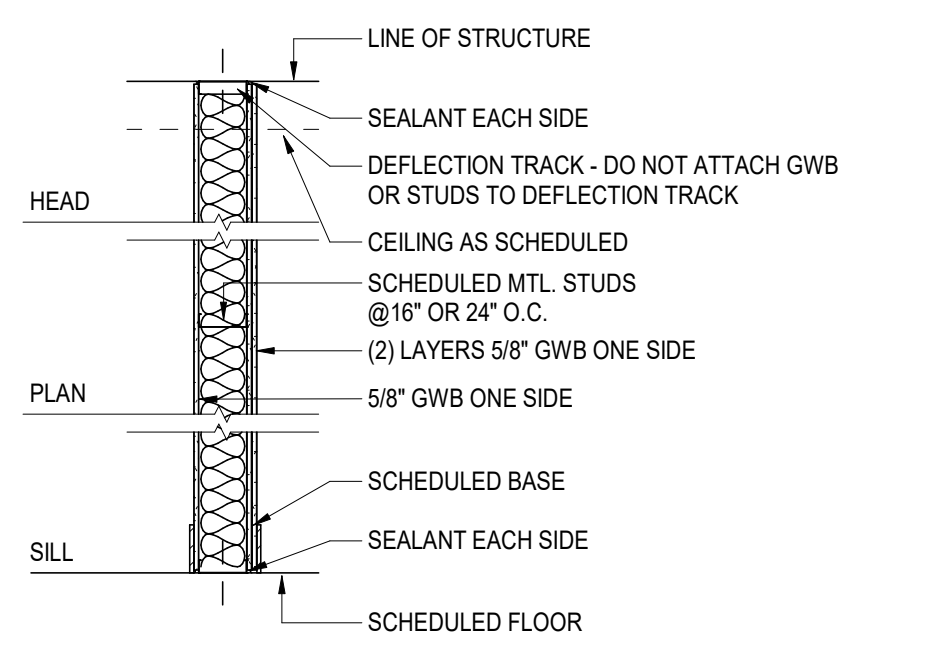
MD

Table with 10 columns: WALL TYPE, FIRE RATING, STC RATING, STUD WIDTH, ASSEMBLED WIDTH, TESTED ASSEMBLY.



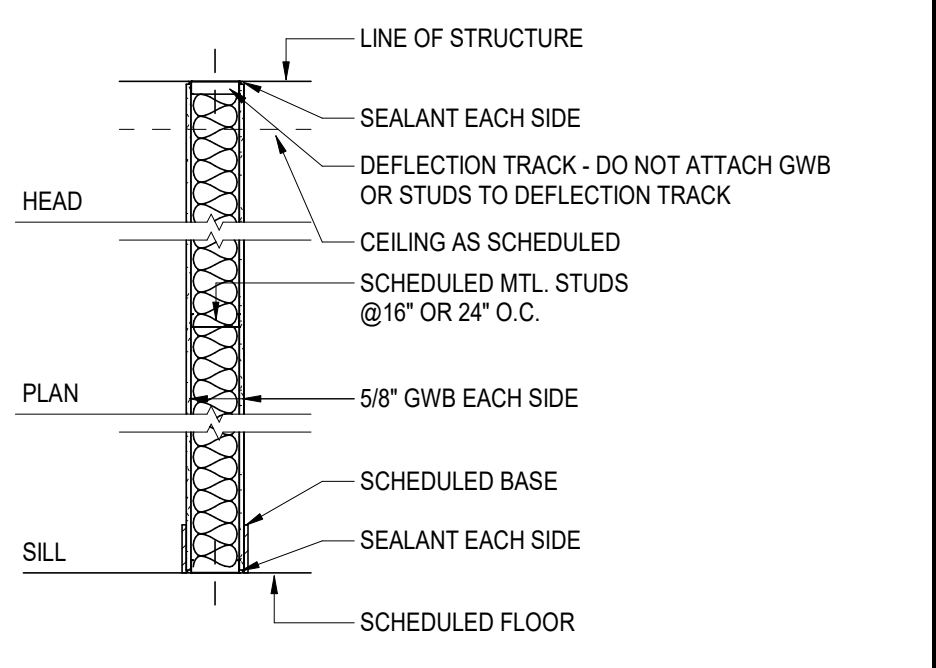
MC

Table with 10 columns: WALL TYPE, FIRE RATING, STC RATING, STUD WIDTH, ASSEMBLED WIDTH, TESTED ASSEMBLY.



MB

Table with 10 columns: WALL TYPE, FIRE RATING, STC RATING, STUD WIDTH, ASSEMBLED WIDTH, TESTED ASSEMBLY.



MA

Table with 10 columns: WALL TYPE, FIRE RATING, STC RATING, STUD WIDTH, ASSEMBLED WIDTH, TESTED ASSEMBLY.

PRICING ONLY NOT FOR CONSTRUCTION

PROJECT NUMBER: 25-038

Table with 2 columns: REVISIONS, NO., DATE, ISSUE.

PEACH STATE CONSTRUCTION COMPANY OFFICE

PRICING ONLY NOT FOR CONSTRUCTION

METAL STUD PARTITION TYPES

G-220

PRICING ONLY