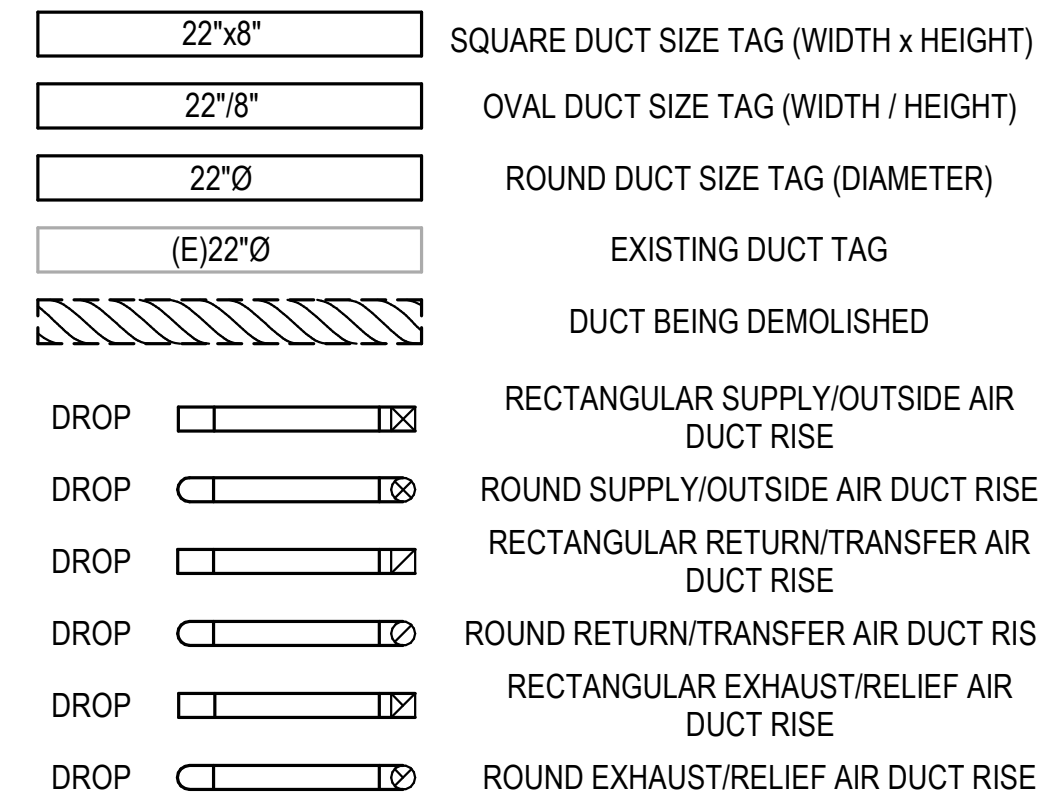


REVISIONS	NO.	DATE	ISSUE

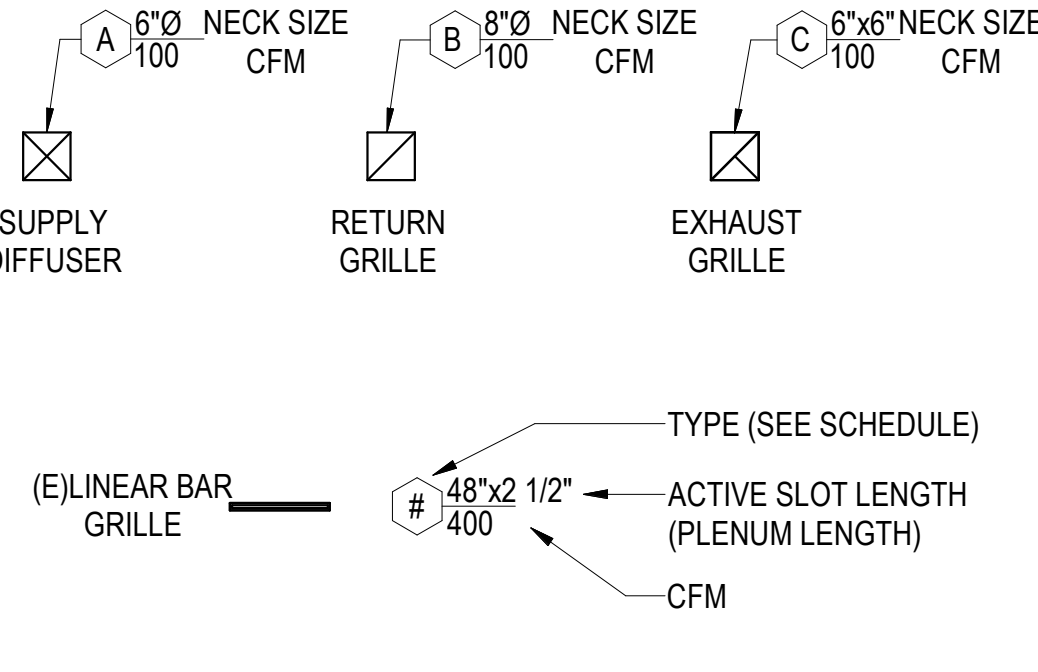
PROJECT ABBREVIATIONS

A/E ARCHITECT / ENGINEER	EJ EXPANSION JOINT	IRH INFRARED HEATER	PRV PRESSURE REGULATING VALVE
AAV AUTOMATIC AIR VENT	ENT ENTERING	IU INDUCTION UNIT	PSI POUNDS PER SQUARE INCH
ACD AUTOMATIC CONTROL DAMPER	ERC ELECTRIC REHEAT COIL	JB JUNCTION BOX	PSIA POUNDS PER SQUARE INCH - ABSOLUTE
AD ACCESS DOOR	ERP ELECTRIC RADIANT PANEL	JL JUSTIFIED LEFT	PSIG POUNDS PER SQUARE INCH - GAGE
AF AFTER FILTER	ESP EXTERNAL STATIC PRESSURE	JR JUSTIFIED RIGHT	PTAC PACKAGED TERMINAL AIR CONDITIONER
AFF ABOVE FINISHED FLOOR	ET EXPANSION TANK	KG KILOGRAM	QNTY QUANTITY
AFMS AIR FLOW MEASURING STATION	ETO ETHYLENE OXIDE	KGHR KILOGRAM PER HOUR	RA RETURN AIR
AHU AIR-HANDLING UNIT	EUH ELECTRIC UNIT HEATER	kPa KILOPASCAL	RAF RETURN AIR FAN
AMP AMPERE	EWT ENTERING WATER TEMPERATURE	KW KILOWATT	RAT RETURN AIR TEMPERATURE
APD AIR PRESSURE DROP	EX EXISTING	KWH KILOWATT HOUR	RD REFRIGERANT DISCHARGE
AS AIR SEPARATOR	F FAHRENHEIT	LOOP LOCK ONLY OPEN POSITION	REA RELIEF AIR
B BOILER	F&T FLOAT AND THERMOSTATIC	LVG LEAVING	RF RETURN FAN
BAS BUILDING AUTOMATION SYSTEM	FA FREE AREA	LVR LOUVER	RH RELATIVE HUMIDITY
BBR BASE BOARD RADIATOR	FCU FAN COIL UNIT	LWT LEAVING WATER TEMPERATURE	RHC REHEAT COIL
BE BOTTOM ELEVATION	FD FLOOR DRAIN	M METER, SI UNIT	RLA RUN LOAD AMPERE
BFP BACKFLOW PREVENTER	FF FINAL FILTER	M/S METERS PER SECOND (OR METERS/SECOND)	RO REVERSE OSMOSIS
BHP BRAKE HORSEPOWER	FM FLOW METER	MA MIXED AIR	RPM REVOLUTIONS PER MINUTE
BOD BOTTOM OF DUCT	FOP FUEL OIL PUMP	MAT MIXED AIR TEMPERATURE	RS/RL REFRIGERANT SUCTION AND REFRIGERANT LIQUID
BOP BOTTOM OF PIPE	FOT FLAT ON TOP	MAU MAKE-UP AIR UNIT	RTU ROOF TOP UNIT
BSC BIOLOGICAL SAFETY CABINETS	FPM FEET PER MINUTE	MAV MANUAL AIR VENT	RV RELIEF VALVE
BT BLOWOFF TANK	FPS FEET PER SECOND	MAX MAXIMUM	SA SUPPLY AIR
BTU BRITISH THERMAL UNIT	FPU FAN POWERED TERMINAL UNIT	MB MIXING BOX	SAT SUPPLY AIR TEMPERATURE
BTUH BRITISH THERMAL UNIT PER HOUR	FRP FIBER REINFORCED POLYESTER	MBH 1,000 BTUH	SCFM STANDARD CUBIC FEET PER MINUTE
CV CONSTANT AIR VOLUME	FS FIBER REINFORCED POLYESTER	MCA MINIMUM BRANCH CIRCUIT AMPACITY	SCR SILICON CONTROLLED RECTIFIER
CC COOLING COIL	FSTAT FREEZESTAT	MER MECHANICAL EQUIPMENT ROOM	SEA SMOKE EXHAUST AIR
CD COOLING COIL CONDENSATE DRAIN	FT FEET	MERV MINIMUM EFFICIENCY REPORTING VALUE	SEN SENSIBLE HEAT
CFH CUBIC FEET PER HOUR	FT WC FEET OF WATER COLUMN	MH MANHOLE	SF SUPPLY FAN
CFM CUBIC FEET PER MINUTE	FT-LB FOOT-POUND	MHP MOTOR HORSEPOWER	SHC STEAM HEATING COIL
CFT CUBIC FEET	FV FACE VELOCITY	MIN MINIMUM	SI SQUARE INCHES
CH CHILLER	GA GAUGE	MOCPP MINIMUM OVERCURRENT PROTECTION	SP STATIC PRESSURE
CHP CHILLED WATER PUMP	GAL GALLONS	MOV MOTOR OPERATED VALVE	SP GR SPECIFIC GRAVITY
CHS/R CHILLER WATER	GH GRAVITY HOOD	MTD MEAN TEMPERATURE DIFFERENCE	SPS STATIC PRESSURE SENSOR
CL CENTER LINE	GPD GALLONS PER DAY	NA NOT APPLICABLE	SQ FT SQUARE FOOT (FEET)
CM CUBIC METER	GPH GALLONS PER HOUR	NC NOISE CRITERIA	SS STAINLESS STEEL
CM/S CUBIC METER PER SECOND	GPM GALLONS PER MINUTE	NG NORMALLY CLOSED	SSR SOLID SEPARATOR
CO CLEAN OUT	GPR GAS PRESSURE REGULATOR	NO NORMALLY OPEN	ST STEAM TRAP
COMP COMPRESSOR UNIT	GS GALVANIZED STEEL	NOM NOMINAL	TAB TESTING, ADJUSTING, BALANCE
COP COEFFICIENT OF PERFORMANCE	H HUMIDIFIER	NPLV NON-STANDARD PART LOAD VALUE	TDH TOTAL DYNAMIC HEAD
COR CONTRACTING OFFICER REPRESENTATIVE	HB HOSE BIBB	NPSH NET POSITIVE SUCTION HEAD	TDS TOTAL DISSOLVED SOLIDS
CP CONDENSATE PUMP	HC HEATING COIL	NPSHA NET POSITIVE SUCTION HEAD AVAILABLE	TSP TOTAL STATIC PRESSURE
CST CONDENSATE STORAGE TANK	HD HOOD	NPSHR NET POSITIVE SUCTION HEAD REQUIRED	TSTAT THERMOSTAT
CSG CLEAN STEAM GENERATOR	HOA HAND/OFF/AUTOMATIC	NTS NOT TO SCALE	TU TERMINAL UNIT
CT COOLING TOWER	HP HEAT PUMP	OA OUTSIDE AIR	UC UNDER CUT
CU CONDENSING UNIT	HP HORSEPOWER	OAD OUTDOOR AIR DAMPER	UH UNIT HEATER
CUH CABINET UNIT HEATER	HRC HEAT RECOVERY COIL	OD OUTSIDE DIAMETER	V VENT
CV CONSTANT VOLUME	HRP HYDRONIC RADIANT (CEILING) PANEL	P PUMP	VAV VARIABLE AIR VOLUME
CWP CONDENSER WATER PUMP	HRW HEAT RECOVERY WHEEL	Pa PASCAL	VFD VARIABLE FREQUENCY DRIVE
DDC DIRECT DIGITAL CONTROLS	HSTAT HUMIDISTAT	PCF POUNDS PER CUBIC FOOT (FEET)	VP VACUUM PUMP
DIA DIAMETER	HVU HEATING AND VENTILATING UNIT	PD PRESSURE DROP	VR VACUUM (STEAM CONDENSATE) RETURN
DI DEIONIZED WATER	HWC HOT WATER COIL	PF PRE-FILTER	W WATTS
DP DEW POINT TEMPERATURE	HWP HEATING HOT WATER PUMP	PG PRESSURE GAGE	Wb WET-BULB (TEMPERATURE)
DPS DIFFERENTIAL PRESSURE SENSOR	HTX HEAT EXCHANGER	PHC PREHEAT COIL	WFMS WATER FLOW MEASURING STATION
DX DIRECT EXPANSION	HZ HERTZ	PPM PARTS PER MILLION	WG WATER GAGE
EA EXHAUST AIR	I/O INPUT/OUTPUT	PRS PRESSURE REGULATING (VALVE) STATION	WPD WATER PRESSURE DROP
EAT ENTERING AIR TEMPERATURE	IAQ INDOOR AIR QUALITY		YR YEAR
EC EVAPORATIVE COOLER	IBT INVERTED BUCKET TRAP		
ECC ENGINEERING CONTROL CENTER	ID INSIDE DIAMETER		
EDH ELECTRIC DUCT HEATER	IFB INTEGRAL FACE AND BYPASS		
EER ENERGY EFFICIENCY RATIO	IN INCHES		
EF EXHAUST FAN	IN HG INCHES OF MERCURY		
ES EMERGENCY GAS SHUTOFF	IN WC INCH WATER COLUMN		
EGT ENTERING GLYCOL TEMPERATURE	IN WG INCH WATER GAUGE		
EH EXHAUST HOOD	IN-LB INCH-POUND		
	IPLV INTEGRATED PART LOAD VALUE		

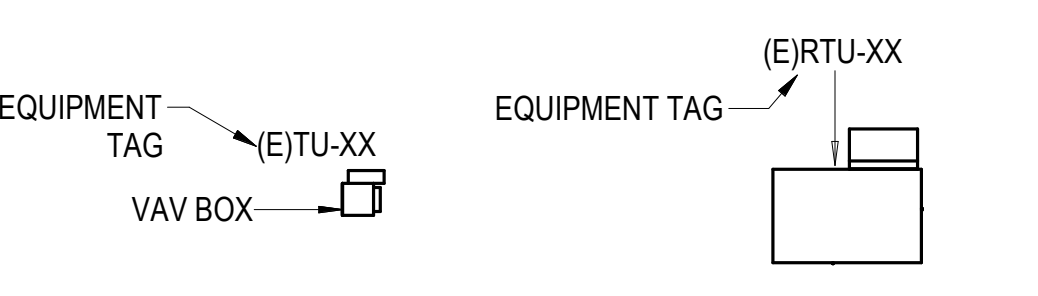
HVAC SYMBOLS AND ABBREVIATIONS



GRILLES, REGISTERS & DIFFUSERS TAG



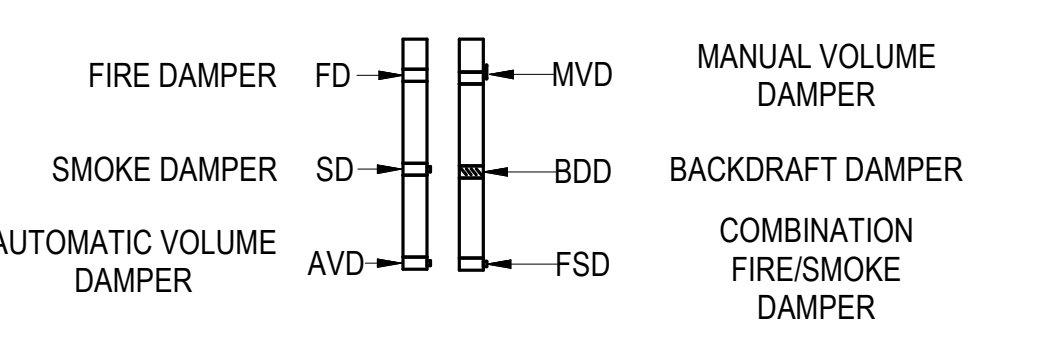
MECHANICAL EQUIPMENT TAGS



DATA DEVICE TAGS AND ABBREVIATIONS

DESCRIPTION	SYMBOL	DESCRIPTION
CARBON DIOXIDE SENSOR	CO2 TH RTU-XX	TEMPERATURE & HUMIDITY SENSOR
CARBON MONOXIDE SENSOR	CO DIS	DISPLAY
NITROGEN DIOXIDE SENSOR	NO2 T TU-XX	THERMOSTAT
HUMIDITY SENSOR	HS S	SENSOR
HUMIDISTAT	H PS	PRESSURE SENSOR

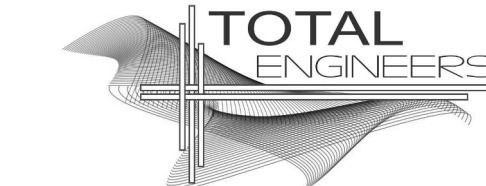
DAMPER TAGS AND ABBREVIATIONS



MECHANICAL SHEET INDEX

SHEET NUMBER	DRAWING TITLE
M0.1	MECHANICAL LEGEND, ABBREVIATIONS, AND NOTES
M0.2	MECHANICAL SPECIFICATIONS
M0.3	MECHANICAL ZONING PLAN
M0.4	MECHANICAL DETAILS
M0.5	MECHANICAL DETAILS
M0.6	MECHANICAL SCHEDULES
M1.1	MECHANICAL NEW WORK FLOOR PLAN

NOTE
 ALL OF GENERAL NOTES ON THIS SHEET ARE TO BE APPLIED TO ALL OTHER DRAWINGS IN THIS SET. THE SYMBOLS AND ABBREVIATIONS SHOWN ON THIS SHEET MAY OR MAY NOT BE USED IN THIS SET OF DRAWINGS.



169 New Street, Macon, GA 31201
 (478)741-4632 - T.E. project # 25-113
 www.totalengineers.com
 GA COA NO # PEF009195 EXP: 06/30/2026