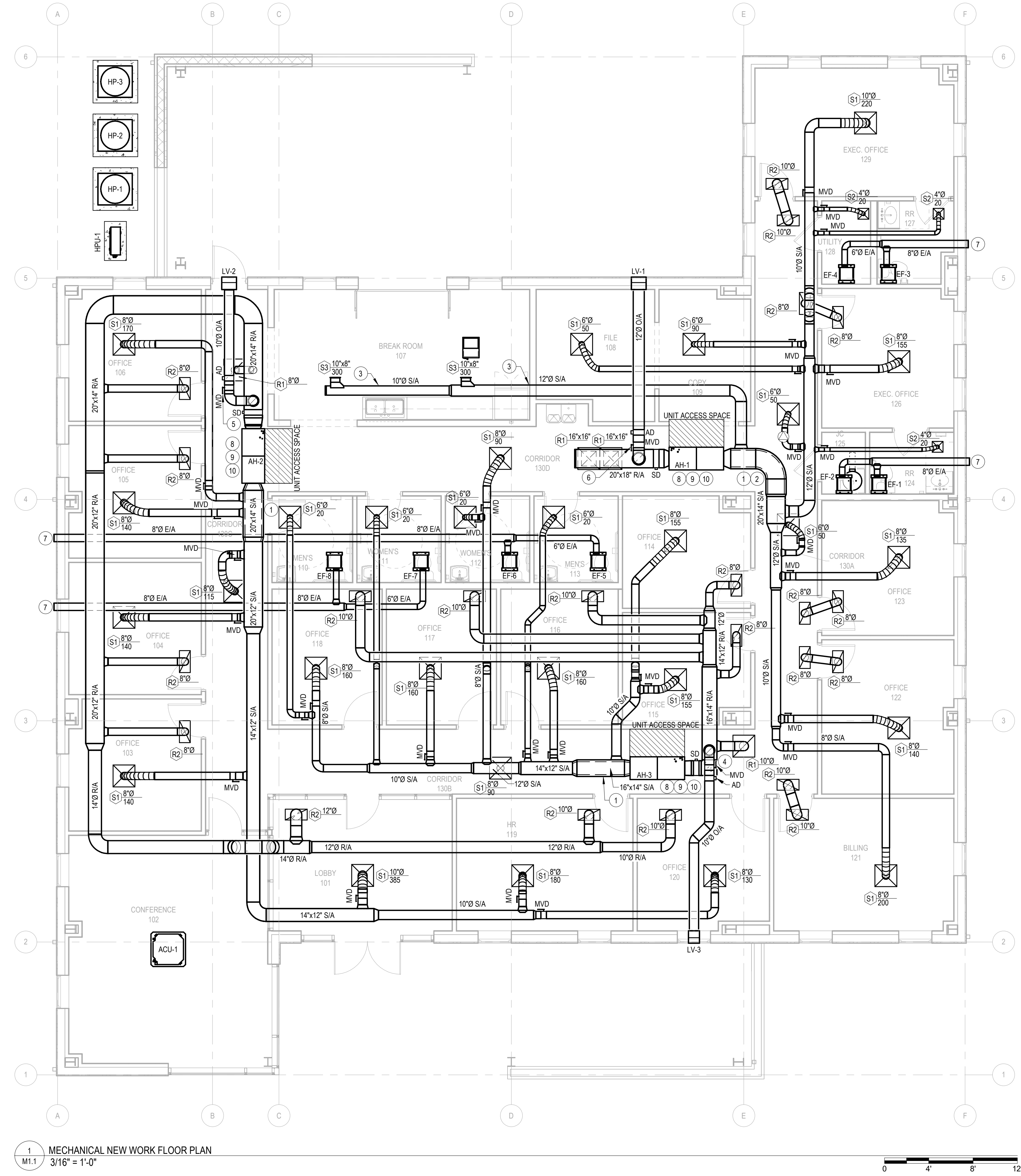


NEW WORK NOTES - M1.1	
#	NOTE TEXT
1	1" DUCT LINER MINIMUM OF 5'-0" LONG INSIDE OF BUILDING. INCREASE DUCT SIZE TO KEEP INSIDE OF DUCT THE SAME SIZE OF CONNECTED DUCT.
2	DOUBLE WALL INSULATED ELBOW. INCREASE DUCT FOR LARGER ELBOW.
3	VISIBLE DUCTWORK IN THE BUILDING SHALL BE EXPOSED SPIRAL DUCTWORK. PROVIDE PAINT GRIP FINISH. DUCTWORK SHALL BE PAINTED PER ARCHITECTURAL.
4	BALANCE OUTSIDE AIR MVD TO 190 CFM.
5	BALANCE OUTSIDE AIR MVD TO 250 CFM.
6	BALANCE OUTSIDE AIR MVD TO 315 CFM.
7	OUTSIDE WALL CAP. INSTALL VENT CAP AT EXTERIOR EAVE. SEE DETAIL 4 ON SHEET M0.5. COORDINATE LOCATION OF VENT WITH STRUCTURE AND ARCHITECTURAL COMPONENTS.
8	ROUTE CONDENSATE PIPING TO HUB DRAIN. COORDINATE WITH PLUMBING.
9	ROUTE REFRIGERANT PIPES FROM OUTDOOR UNIT TO RESPECTIVE INDOOR UNIT. ROUTE AND SIZE PER MANUFACTURER'S INSTRUCTIONS.
10	INSTALL AUXILIARY PAN WITH WATER-LEVEL MONITORING DEVICE (FLOAT SWITCH) UNDERNEATH THE NEW AH.



1 MECHANICAL NEW WORK FLOOR PLAN  
 M1.1 3/16" = 1'-0"

