

PARTITION TYPES

PARTITION LEGEND

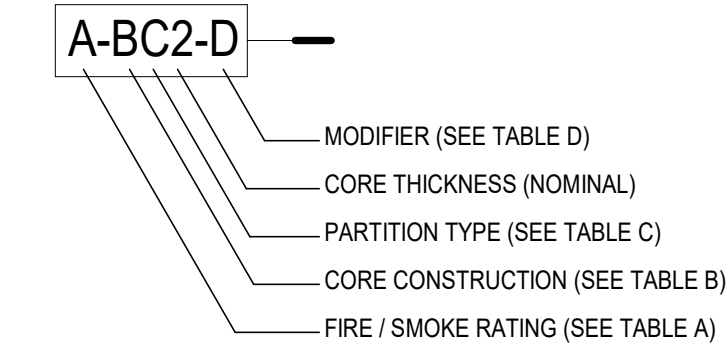
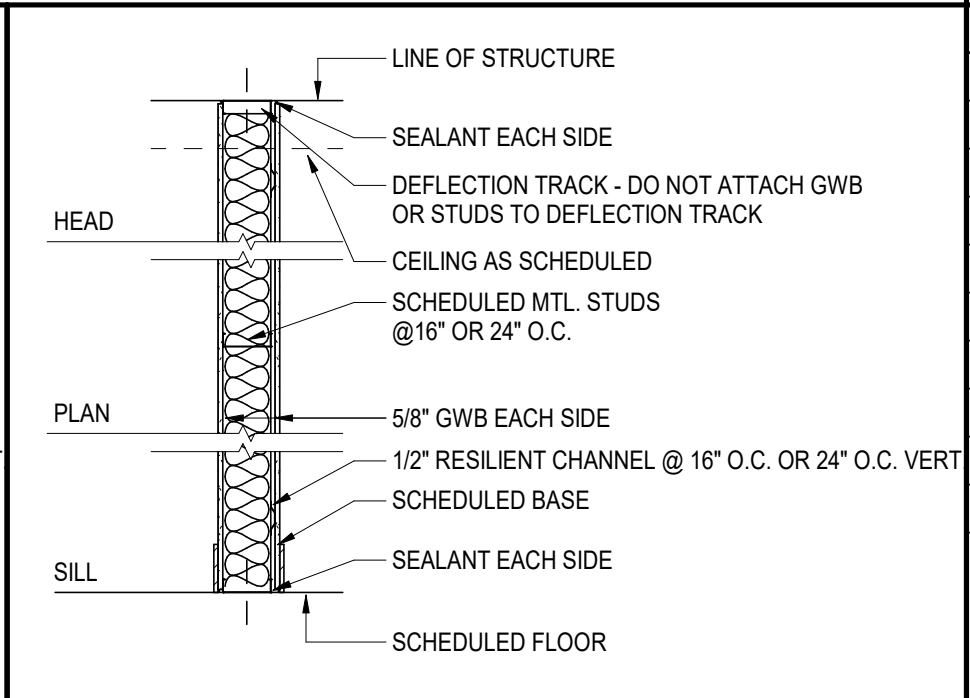
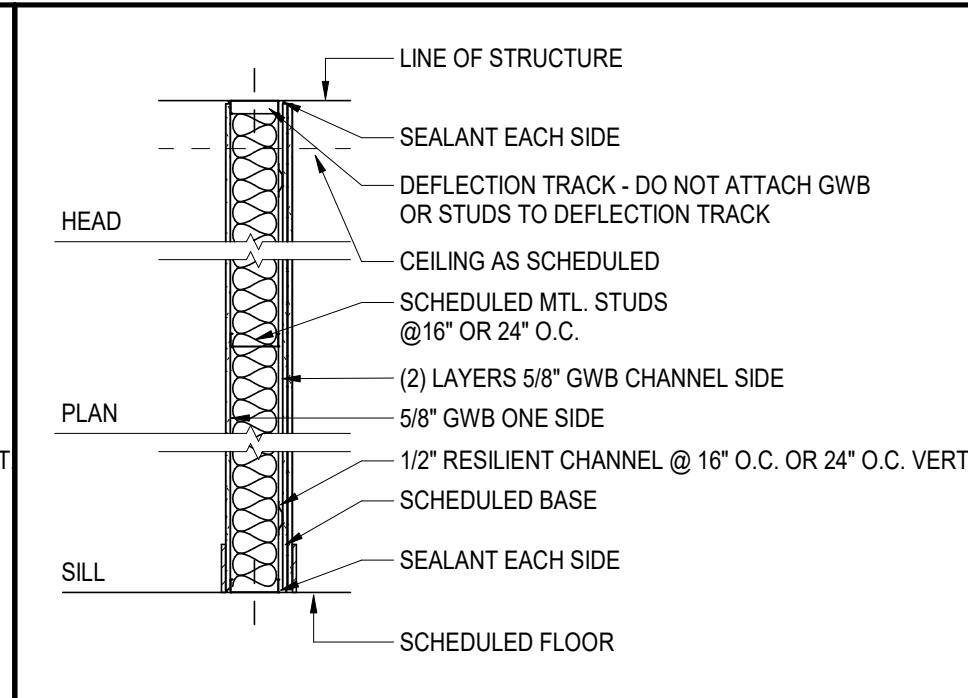
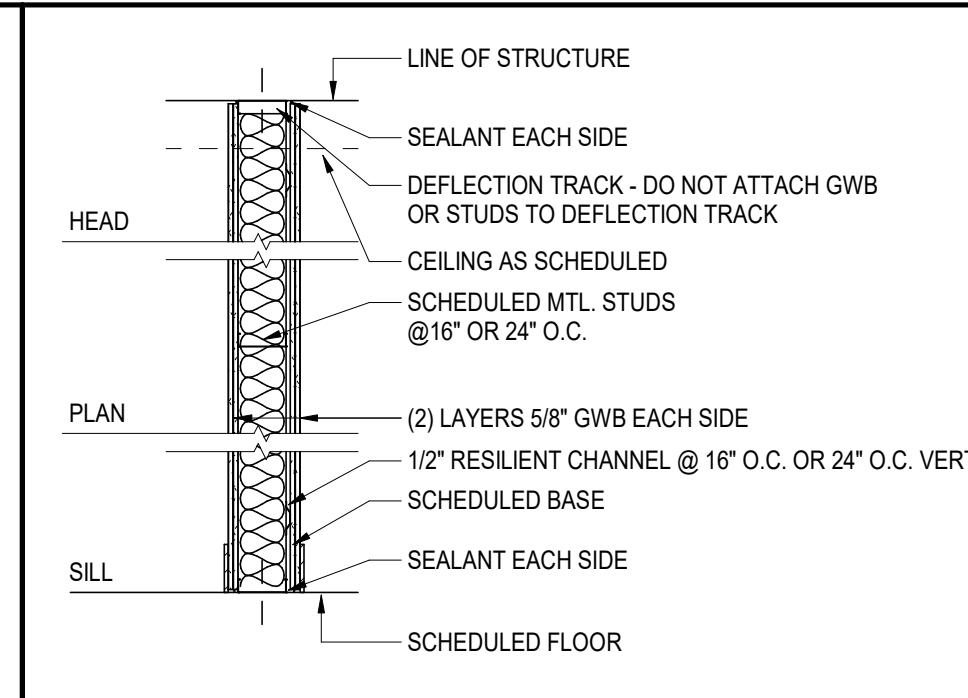
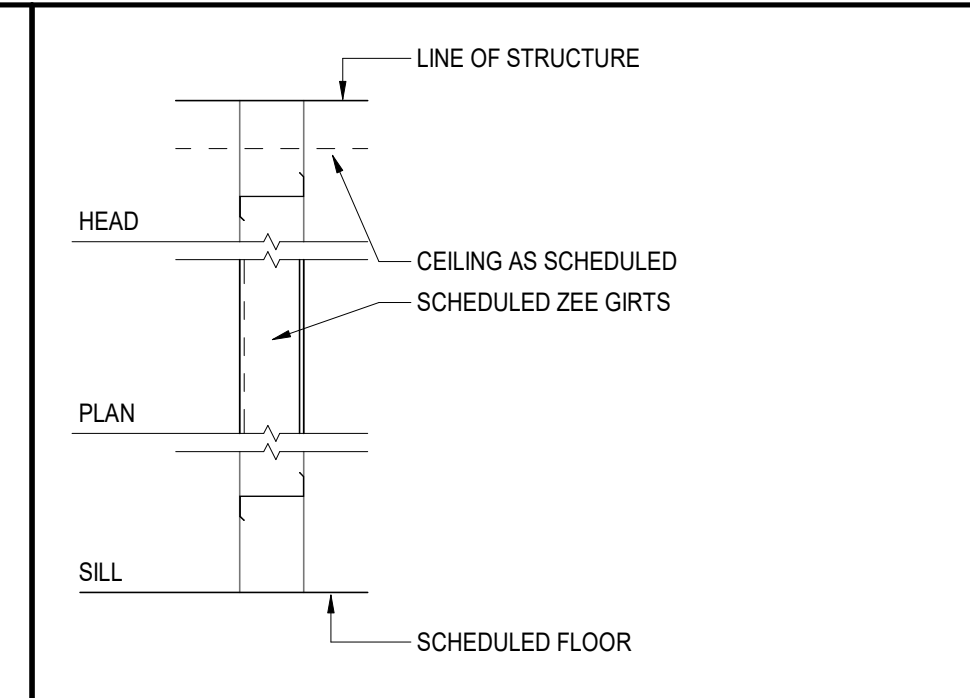
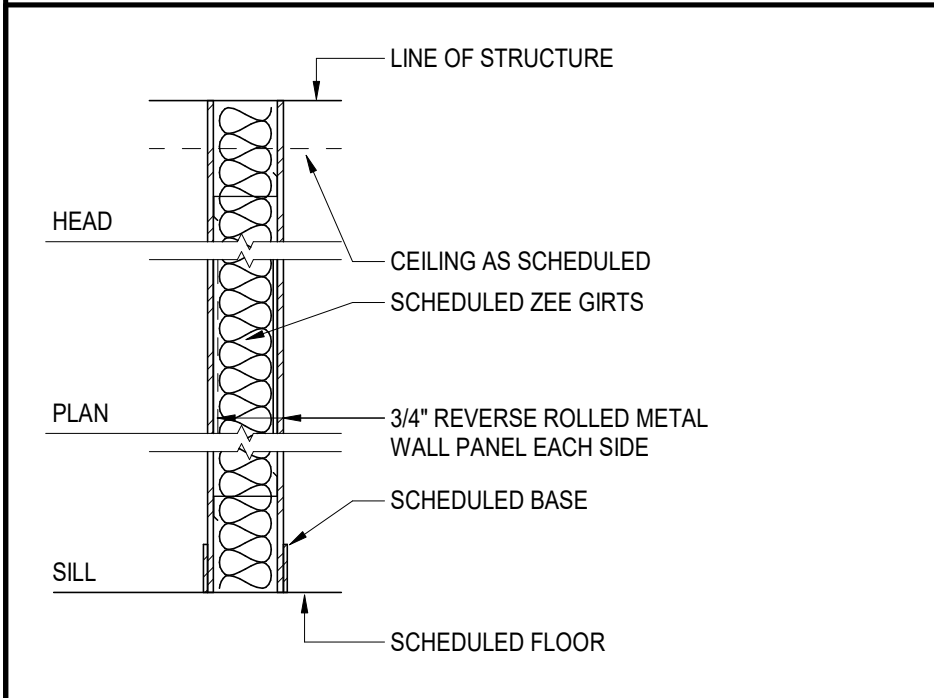


TABLE A - FIRE / SMOKE RATING		TABLE C - PARTITION TYPE	
0	NON-RATED CONSTRUCTION	A	(1) LAYER GYP. EACH SIDE
S	NON-RATED SMOKE PARTITION: FRAMING & GWB TO STRUCTURE ABOVE & SPACE AROUND PENETRATING ITEMS TO BE FILLED W/ APPROVED MATERIAL TO LIMIT PASSAGE OF SMOKE; COMPLY WITH 2018 IBC SECTION 710	B	(1) LAYER GYP. ONE SIDE; (2) LAYERS OTHER SIDE
		C	(2) LAYERS GYP. EACH SIDE
		D	(1) LAYER GYP. ONE SIDE
		E	(2) LAYERS GYP. ONE SIDE
1	1-HOUR FIRE RATED; FRAMING & GWB TO STRUCTURE / THERMAL INSULATION PER UL REQUIREMENTS	F	(1) LAYER GYP. EACH SIDE, RESILIENT CHANNEL
		G	(1) LAYER GYP. ONE SIDE; (2) LAYERS RESILIENT CHANNEL SIDE
2	2-HOUR FIRE RATED; FRAMING & GWB TO STRUCTURE / THERMAL INSULATION PER UL REQUIREMENTS	H	(2) LAYERS GYP. EACH SIDE, RESILIENT CHANNEL
		J	(1) LAYER GYP. EACH SIDE, SHEATHING
3	3-HOUR FIRE RATED; FRAMING & GWB TO STRUCTURE / THERMAL INSULATION PER UL REQUIREMENTS	K	(1) LAYER GYP. ONE SIDE; (2) LAYERS SHEATHING SIDE
		L	(2) LAYERS GYP. EACH SIDE, SHEATHING
		M	EXPOSED CORE
		P	(1) LAYER METAL WALL PANEL EACH SIDE

TABLE B - CORE CONSTRUCTION		TABLE D - MODIFIERS	
C	CONCRETE - CAST-IN-PLACE	A	PARTIAL HEIGHTS PARTITION / FRAMING & GWB TO X-0" A.F.F. (SEE BLDG. DETAILS)
D	DEMISING	B	FRAMING & GWB TO FINISHED CEILING / PROVIDE BRACING AS REQUIRED
L	SPECIAL	C	'B' W/ 3" SOUND ATTENUATION BLANKETS (SAB) & 4" WIDE SAB ABOVE CEILING CENTERED ON PARTITION
M	METAL	D	FRAMING & GWB TO 4" ABOVE CEILING / PROVIDE BRACING AS REQ. OR EXTEND STUDS TO STRUCTURE ABOVE
P	PRE-CAST CONCRETE	E	'D' W/ 3" SOUND ATTENUATION BLANKETS (SAB) & 4" WIDE SAB ABOVE CEILING CENTERED ON PARTITION
S	SHAFT LINER	F	FRAMING & GWB TO STRUCTURE U.N.O. PROVIDE SOUND ATTENUATION BATTS FRICTION FIT IN STUD CAVITY.
T	STONE	G	FRAMING & GWB TO FINISHED CEILING INSIDE RESTROOM, OFFICE SIDE; FRAMING & GWB TO TIDJUST CAP W/ SOUND ATTENUATION BATTING.
U	MASONRY UNIT		
W	WOOD		
Z	Z-FURRING		



ZP

ZM

MH

MG

MF

WALL TYPE	FIRE RATING	STC RATING	STUD WIDTH	ASSEMBLED WIDTH	TESTED ASSEMBLY

WALL TYPE	FIRE RATING	STC RATING	STUD WIDTH	ASSEMBLED WIDTH	TESTED ASSEMBLY

WALL TYPE	FIRE RATING	STC RATING	STUD WIDTH	ASSEMBLED WIDTH	TESTED ASSEMBLY

WALL TYPE	FIRE RATING	STC RATING	STUD WIDTH	ASSEMBLED WIDTH	TESTED ASSEMBLY

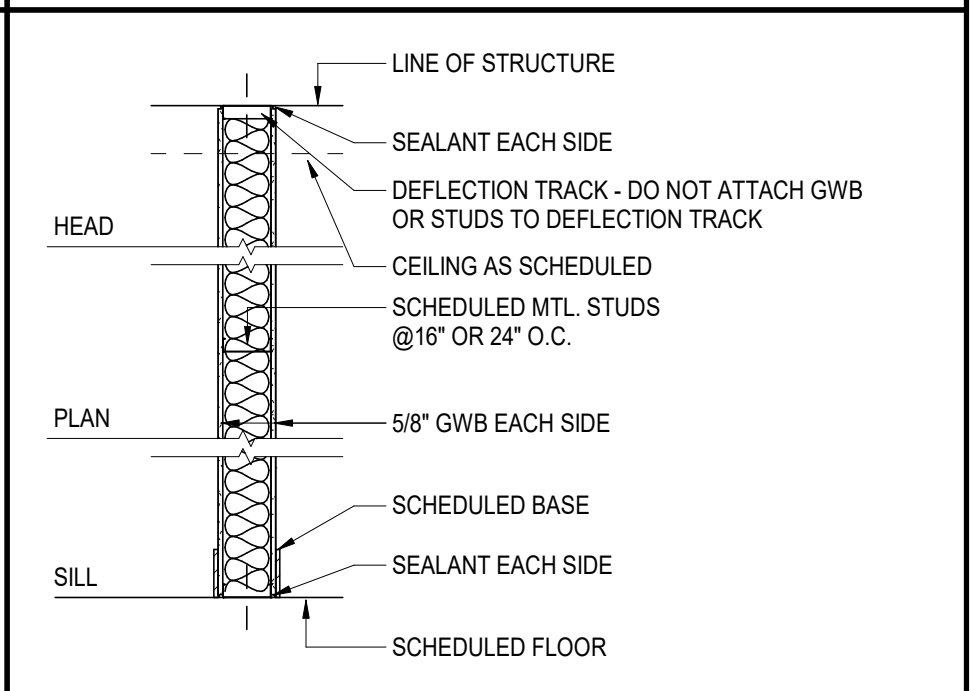
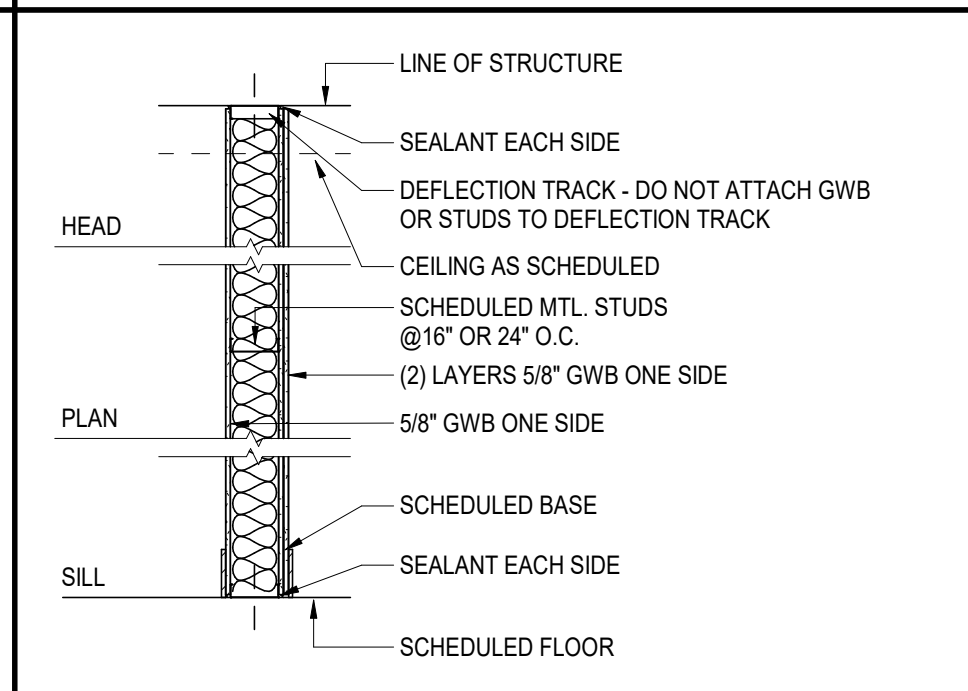
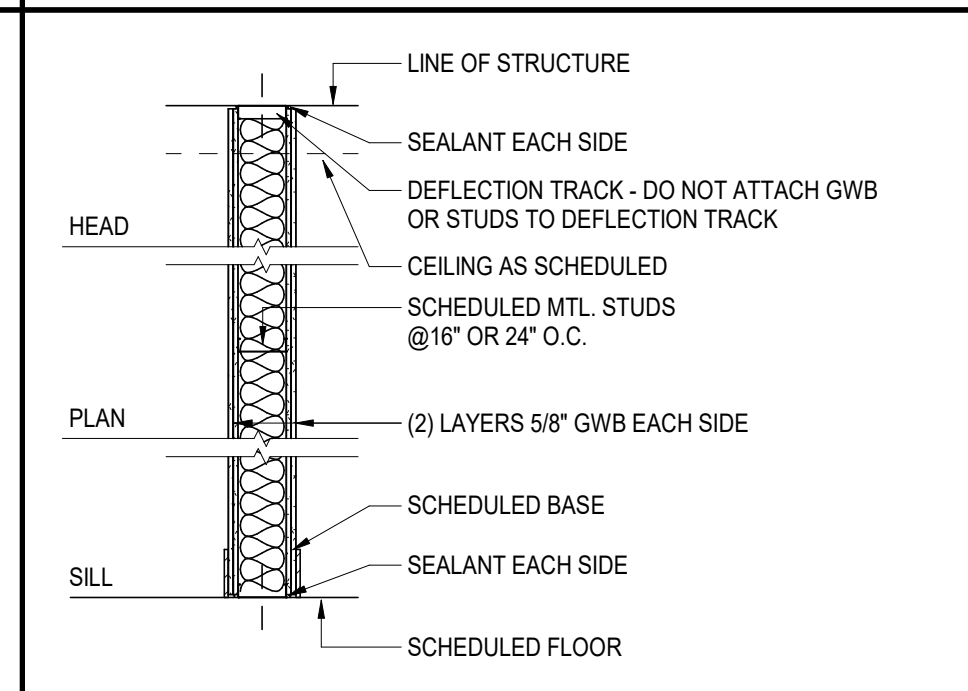
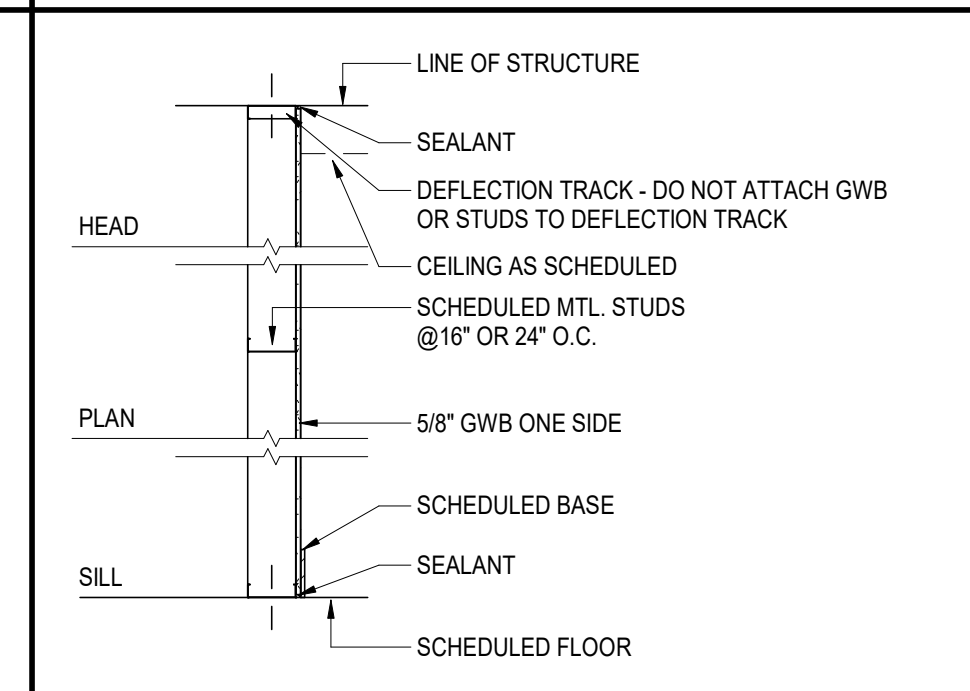
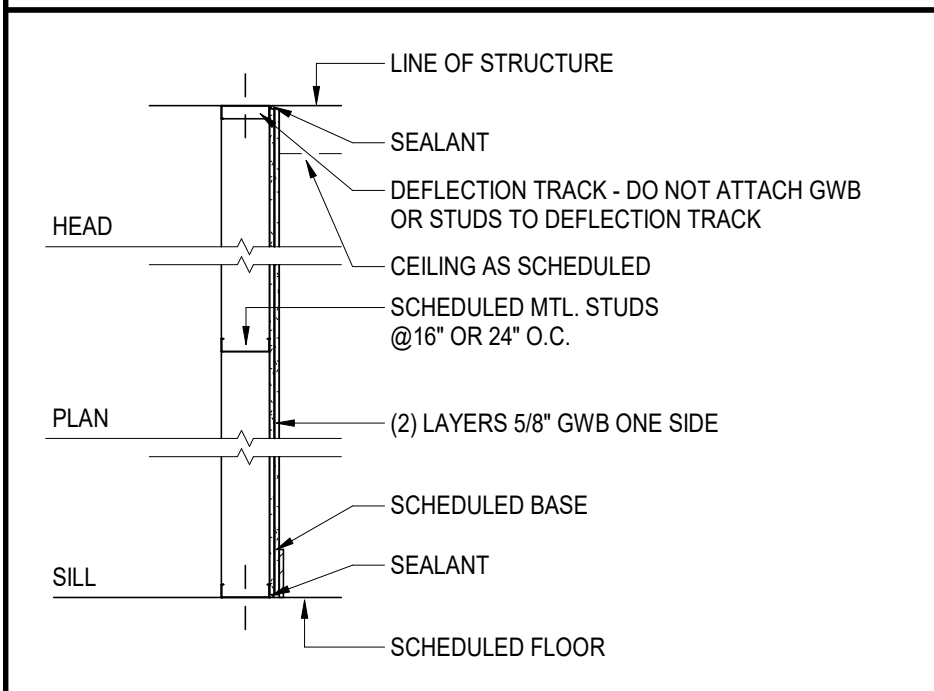
WALL TYPE	FIRE RATING	STC RATING	STUD WIDTH	ASSEMBLED WIDTH	TESTED ASSEMBLY

PARTITION NOTES

- CONTRACTOR SHALL ADJUST STUD GAUGE AND/OR SPACING AND BRACE AS NECESSARY SO AS NOT TO EXCEED L240 DESIGN CRITERIA.
- PROVIDE RATED WALLS ACCORDING TO THE FULL REQUIREMENTS OF THE INDICATED TEST NUMBER.
- PROVIDE IN-WALL BLOCKING FOR MILLWORK, ARTWORK, FURNISHINGS, HARDWARE, WALL STOPS, TOILET ACCESSORIES, GRAB BARS, CLOSET RODS, HANDRAILS, WALL BUMPERS, MODULAR OFFICE WALLS, ETC.
- REFER TO STRUCTURE FOR BEARING / NON-BEARING CONDITION WHEN THERE IS DISCREPANCY.
- PROVIDE CONTINUOUS FIRESTOP AT TOP, BOTTOM, AND ENDS OF FIRE-RATED PARTITIONS AND AT ALL PENETRATIONS. PROVIDE RED COLOR IF DICTATED BY AUTHORITY HAVING JURISDICTION.
- ALL FIRE-RATED WALLS AND SMOKE BARRIERS SHALL BE PERMANENTLY IDENTIFIED WITH SIGNS OR STENCILING ABOVE CEILING OR IN CONCEALED SPACES WITH LETTERS A MINIMUM OF 2" HIGH ON A CONTRASTING BACKGROUND SPACED AT A MAXIMUM OF 12" - 0" O.C. WITH A MINIMUM OF ONE PER WALL OR BARRIER IN ACCORDANCE WITH 2024 INTERNATIONAL FIRE CODE, 100-3-3 CHAPTER 5 OF THE RULES AND REGULATIONS OF THE FIRE SAFETY COMMISSIONER.

SUGGESTED WORDING: "(#) HOUR FIRE AND SMOKE BARRIER - PROTECT ALL OPENINGS"

APPLY LETTERING TO BOTH SIDES OF WALLS.
- REFER TO STRUCTURAL DRAWINGS AND SPECIFICATIONS FOR ADDITIONAL INFORMATION ON STRUCTURAL REINFORCEMENT OF WALLS INCLUDING BUT NOT LIMITED TO PARTIAL HEIGHT WALLS, BRACING, REINFORCING, BOND BEAMS AND GROUT FILLING OF C.M.U. CORES.
- AT ALL RESTROOMS, OFFICES AND SIMILAR SPACES, PROVIDE BACKLOADED SCHEDULED CEILING W/ SOUND BATT INSULATION A MINIMUM OF 4" - 0" ALONG EACH SIDE OF SCHEDULED PARTITIONS (TYP.)
- STAGGER ELECTRICAL OUTLETS 12" MINIMUM AT ALL PARTITIONS.
- ALL VERTICAL PIPING EXPOSED IN ROOMS SHALL BE FURRED WITH SAME MATERIAL AS ADJACENT WALLS. EXCEPTIONS ARE: MECHANICAL ROOMS, ELECTRICAL ROOMS, TELEPHONE ROOMS.
- METAL STUD PARTITIONS BEHIND ALL PLUMBING AND OTHER FIXTURES SHALL BE BRACED TO STRUCTURE WHERE REQUIRED TO SUPPORT THE EQUIPMENT PROVIDED.



ME

MD

MC

MB

MA

WALL TYPE	FIRE RATING	STC RATING	STUD WIDTH	ASSEMBLED WIDTH	TESTED ASSEMBLY
0-MD4	0	-	3 5/8"	4 1/4"	-

WALL TYPE	FIRE RATING	STC RATING	STUD WIDTH	ASSEMBLED WIDTH	TESTED ASSEMBLY

WALL TYPE	FIRE RATING	STC RATING	STUD WIDTH	ASSEMBLED WIDTH	TESTED ASSEMBLY

WALL TYPE	FIRE RATING	STC RATING	STUD WIDTH	ASSEMBLED WIDTH	TESTED ASSEMBLY
0-MA4	0	-	3 5/8"	4 7/8"	-
0-MA6	0	-	6"	7 1/4"	-

WALL TYPE	FIRE RATING	STC RATING	STUD WIDTH	ASSEMBLED WIDTH	TESTED ASSEMBLY



PROJECT NUMBER: 25-038

REVISIONS	NO.	DATE	ISSUE

PEACH STATE CONSTRUCTION COMPANY OFFICE
 286 PIPER ROAD
 CANTON, GA 30115
 NEWTON COUNTY, GEORGIA

METAL STUD PARTITION TYPES
G-220
 ISSUED FOR CONSTRUCTION