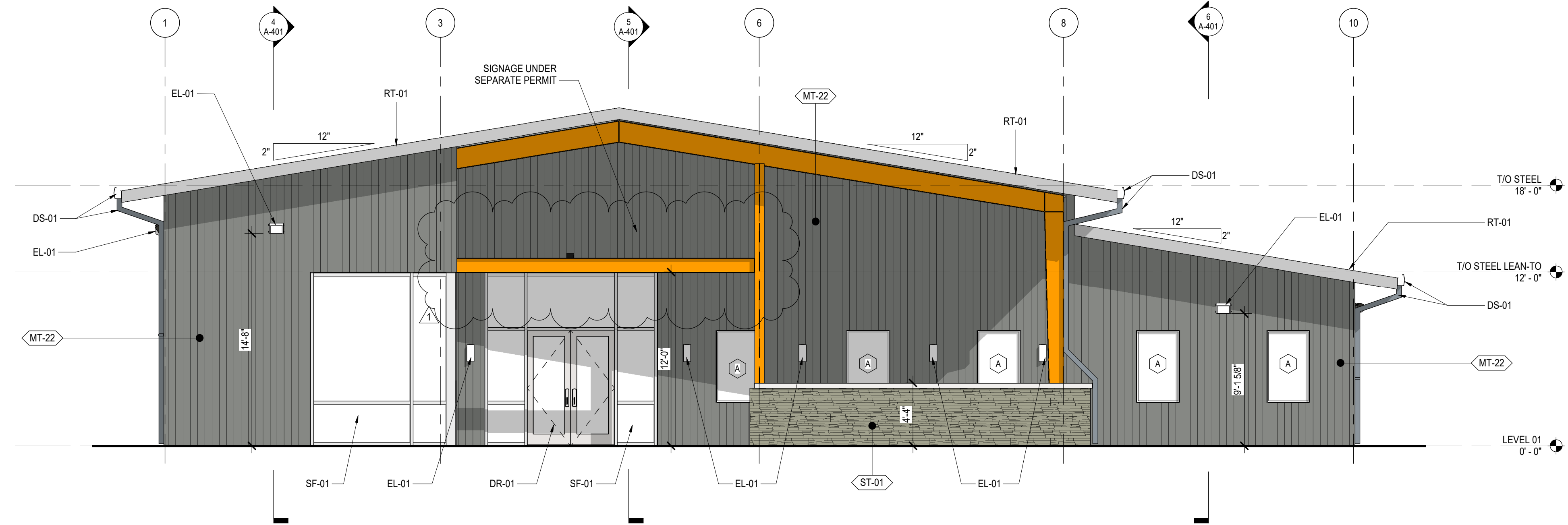


2 NORTH ELEVATION
A-301 | 3/16" = 1'-0"



1 SOUTH ELEVATION
A-301 | 3/16" = 1'-0"

EXTERIOR FINISH LEGEND

PATTERN	TAG	MATERIAL
	MT-22	VERTICAL PBR OR EQUAL METAL WALL PANEL COLOR: STEEL GRAY OR EQUAL
	R-04	STANDING SEAM METAL ROOFING SYSTEM B.O.D.: T.B.D.
	ST-01	STONE VENEER B.O.D.: T.B.D.

EXTERIOR FINISH KEYNOTES

TAG	MATERIAL
DR-01	EXTERIOR DOOR - SEE DOOR SCHEDULE
DS-01	PREFINISHED ALUMINUM GUTTER AND DOWNSPOUT, STEEL GRAY OR EQUAL
EL-01	EXTERIOR LIGHT FIXTURE - SEE ELECTRICAL SCHEDULE
RT-01	PRE-FINISHED METAL RAKE TRIM; STEEL GRAY OR EQUAL
SF-01	EXTERIOR STOREFRONT SYSTEM - SEE STOREFRONT ELEVATIONS

ELEVATION NOTES

- COORDINATE BUILDING SIGNAGE LOCATIONS AND SIGNAGE WITH OWNER. REFER TO ELECTRICAL DRAWINGS FOR SCHEDULE AND LOCATION.
- MATERIAL MANUFACTURERS AND COLORS INDICATED ON DRAWINGS ARE SUBJECT TO CHANGE DURING THE CONSTRUCTION PROCESS. ANY DEVIATIONS FROM APPROVED PLANS SHALL BE SUBMITTED FOR APPROVAL.



PROJECT NUMBER: 25-038

NO.	DATE	ISSUE	REVISION #1 - (COUNTY COMMENTS)
1	05/14/2026		

PEACH STATE CONSTRUCTION COMPANY OFFICE

265 PIPER ROAD
CANTON, GA 30115
NEWTON COUNTY, GEORGIA

EXTERIOR ELEVATIONS

A-301

ISSUED FOR CONSTRUCTION