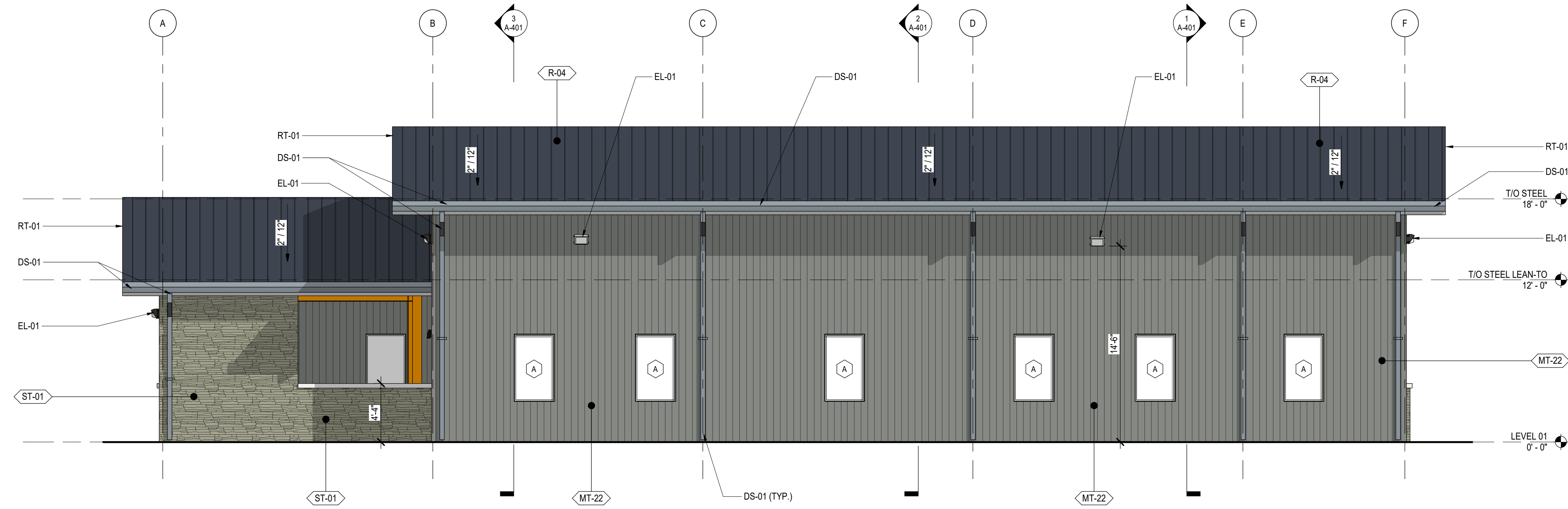


**2 EAST ELEVATION**  
A-302 | 3/16" = 1'-0"



**1 WEST ELEVATION**  
A-302 | 3/16" = 1'-0"

**EXTERIOR FINISH LEGEND**

PATTERN	TAG	MATERIAL
	MT-22	VERTICAL PBR OR EQUAL METAL WALL PANEL COLOR: STEEL GRAY OR EQUAL
	R-04	STANDING SEAM METAL ROOFING SYSTEM B.O.D.: T.B.D.
	ST-01	STONE VENEER B.O.D.: T.B.D.

**EXTERIOR FINISH KEYNOTES**

TAG	MATERIAL
DR-01	EXTERIOR DOOR - SEE DOOR SCHEDULE
DS-01	PREFINISHED ALUMINUM GUTTER AND DOWNSPOUT, STEEL GRAY OR EQUAL
EL-01	EXTERIOR LIGHT FIXTURE - SEE ELECTRICAL SCHEDULE
RT-01	PRE-FINISHED METAL RAKE TRIM; STEEL GRAY OR EQUAL
SF-01	EXTERIOR STOREFRONT SYSTEM - SEE STOREFRONT ELEVATIONS

**ELEVATION NOTES**

- COORDINATE BUILDING SIGNAGE LOCATIONS AND SIGNAGE WITH OWNER, REFER TO ELECTRICAL DRAWINGS FOR SCHEDULE AND LOCATION.
- MATERIAL MANUFACTURERS AND COLORS INDICATED ON DRAWINGS ARE SUBJECT TO CHANGE DURING THE CONSTRUCTION PROCESS. ANY DEVIATIONS FROM APPROVED PLANS SHALL BE SUBMITTED FOR APPROVAL.



PROJECT NUMBER: 25-038

REVISIONS	NO.	DATE	ISSUE

**PEACH STATE CONSTRUCTION COMPANY OFFICE**  
285 PIPER ROAD  
CANTON, GA 30115  
NEWTON COUNTY, GEORGIA

EXTERIOR ELEVATIONS

**A-302**

ISSUED FOR CONSTRUCTION