



PROJECT NUMBER: TE 25-113

REVISIONS  
 NO. DATE ISSUE

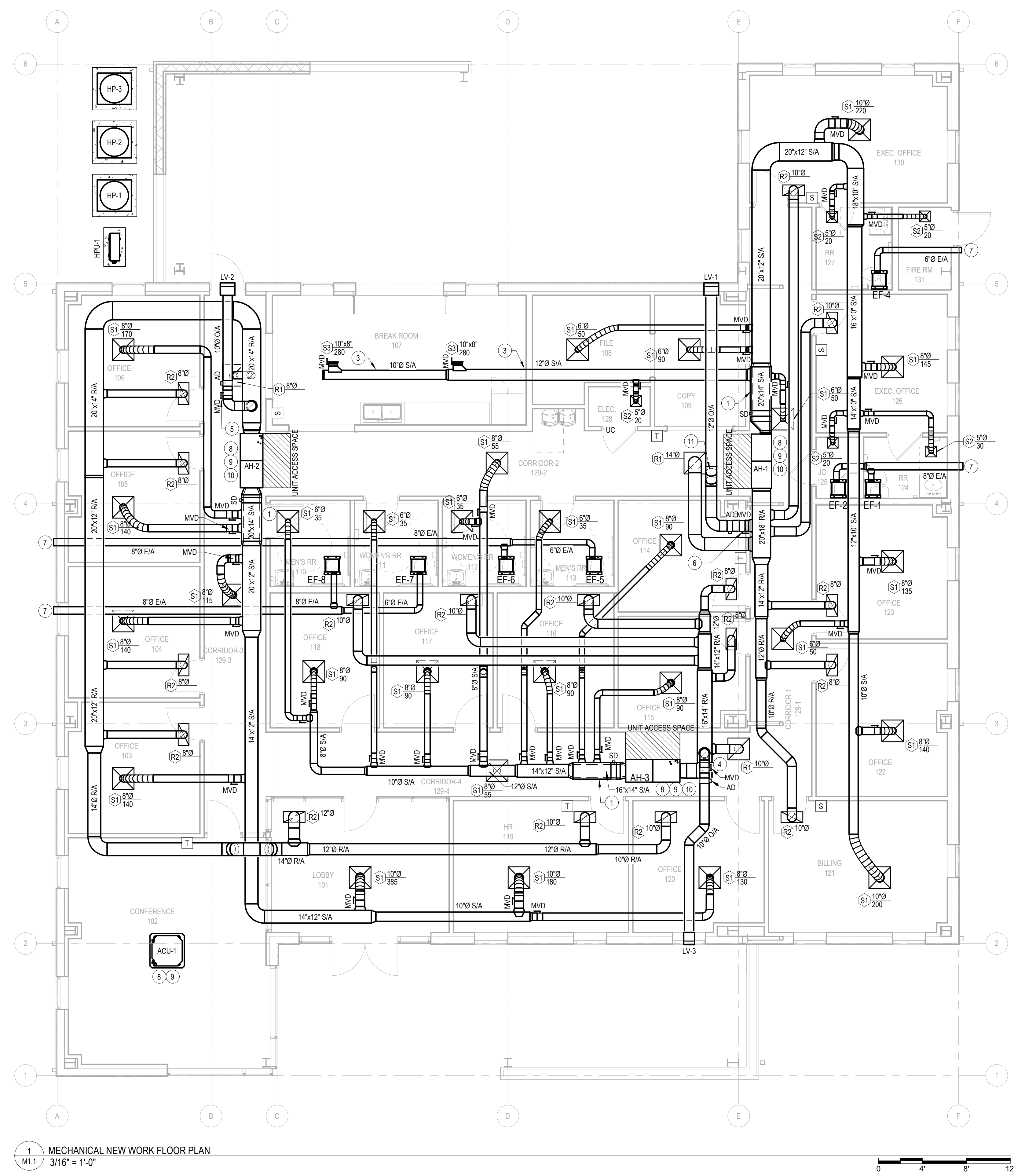
**PEACH STATE CONSTRUCTION  
 COMPANY OFFICE**  
 PIPER ROAD - NEWTON COUNTY, GEORGIA

MECHANICAL  
 NEW WORK  
 FLOOR PLAN

**M1.1**

CONSTRUCTION  
 DOCUMENTS

#	NEW WORK NOTES - M1.1
1	1" DUCT LINER MINIMUM OF 5'-0" LONG INSIDE OF BUILDING. INCREASE DUCT SIZE TO KEEP INSIDE OF DUCT THE SAME SIZE OF CONNECTED DUCT.
3	VISIBLE DUCTWORK IN THE BUILDING SHALL BE EXPOSED SPIRAL DUCTWORK. PROVIDE PAINT GRIP FINISH. DUCTWORK SHALL BE PAINTED PER ARCHITECTURAL.
4	BALANCE OUTSIDE AIR MVD TO 190 CFM.
5	BALANCE OUTSIDE AIR MVD TO 250 CFM.
6	BALANCE OUTSIDE AIR MVD TO 315 CFM.
7	EXHAUST WALL CAP. INSTALL VENT CAP AT EXTERIOR EAVE. SEE DETAIL 4 ON SHEET M0.5. COORDINATE LOCATION OF VENT WITH STRUCTURE AND ARCHITECTURAL COMPONENTS.
8	ROUTE CONDENSATE TO OUTSIDE 12" AFF. PROVIDE 45-DEGREE ELBOW AT THE END OF PIPE TO GUIDE CONDENSATE AWAY FROM EXTERIOR WALL. PROVIDE SPLASH BLOCK AT DISCHARGE.
9	ROUTE REFRIGERANT PIPES FROM OUTDOOR UNIT TO RESPECTIVE INDOOR UNIT. ROUTE AND SIZE PER MANUFACTURER'S INSTRUCTIONS.
10	INSTALL AUXILIARY PAN WITH WATER-LEVEL MONITORING DEVICE (FLOAT SWITCH) UNDERNEATH THE NEW AH.
11	OFFSET DUCT UP.



1 MECHANICAL NEW WORK FLOOR PLAN  
 M1.1 3/16" = 1'-0"

